

PREPARATION



Disconnect electrical power at the breaker or disconnect switch and lockout/tagout in accordance with procedures and codes.

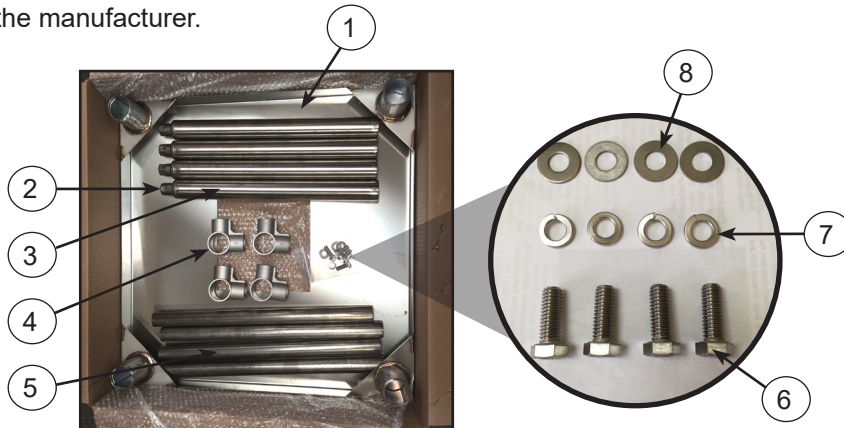
Ensure that incoming water to the machine is secured either by use of a shut-off valve or by disconnecting the incoming water line.

The unit must be drained completely.

TOOLS REQUIRED

- 5/32" Allen wrench
- Rubber mallet
- Tube of food-grade silicon
- Silicon gun
- 9/16" wrench
- Mop or rags

1. Inspect the stand kit and packaging to ensure there is no freight damage. If there is damage, contact the freight carrier immediately.
2. Verify that all kit components are present. If any component is missing, contact the manufacturer.



ITEM	QTY	DESCRIPTION	PART NUMBER
1	1	Stand Platform	05700-002-88-82
2	4	Foot, Adjustable	05340-108-01-03
3	4	Leg, 18" Stand	05700-002-89-47
4	4	Bracket, Cross Brace	04730-003-25-89
5	4	Cross Brace	05700-003-25-90
6	4	Bolt, Hex, 3/8-16 x 1"	05305-276-03-00
7	4	Lockwasher, 3/8"	05311-276-01-00
8	4	Washer, Flat, 3/8"	05311-176-01-00

3. Assemble the four brackets and braces on a flat surface.

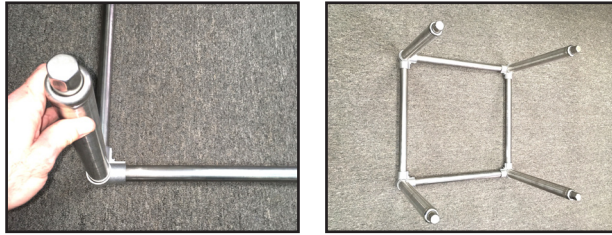


4. Tighten the set screws holding the braces and ensure the middle set screws are backed out of inside the brackets.

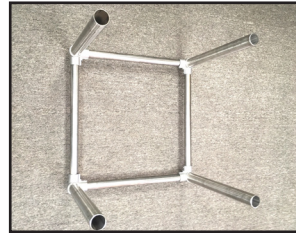


Items 2 and 3 are already assembled and are referred to as "legs" in these instructions.

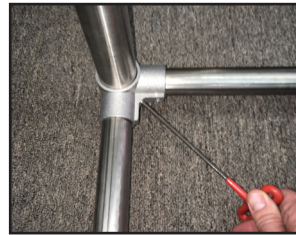
5. Place the legs in the brackets.



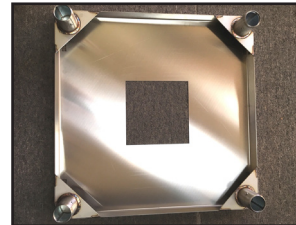
6. Flip the entire assembly over and slide the bracket/brace assembly all the way down the legs onto the feet.



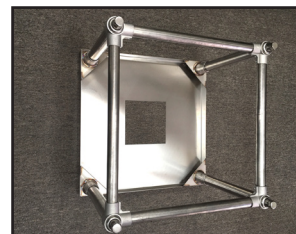
7. Barely tighten the middle set screws on the brackets.



8. Lay the stand platform on its top.

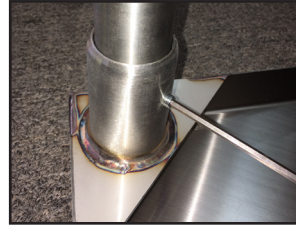


9. Flip the bracket/brace assembly over and place the legs fully into the leg sockets of the stand platform.



The set screws might need to be backed-out a little to allow the legs to seat fully in the sockets.

10. Tighten the set screws on the leg sockets with the Allen wrench to secure them in place.

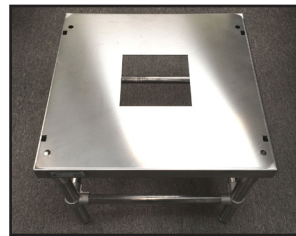


11. Loosen the middle set screws (same ones tightened in Step 7) on the brackets.
12. Push the bracket/brace assembly down until the brackets are a minimum of 6" and a maximum of 7" from the end of the leg tubes.

The rubber mallet can be used to nudge the bracket/brace assembly up and down until the correct location is reached.

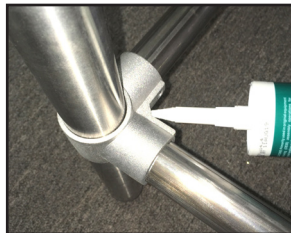


13. Tighten the middle set screws (same ones loosened in Step 11) on the brackets.
14. Flip the stand over and set it down on all four feet. Ensure the legs are stable.



15. When stable, apply silicon to each set screw to cover any exposed threads and fill-in the hole for the Allen wrench.

Only a small amount of silicon is necessary.



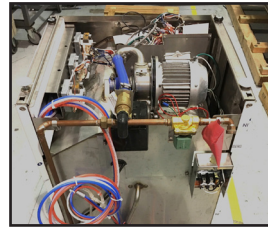
16. If the dishmachine was already installed, follow the Preparation section on page 1 and disconnect any hoses and wiring that might prevent flipping the machine over.
17. Place something on the floor that will prevent scratching the top of the dishmachine.



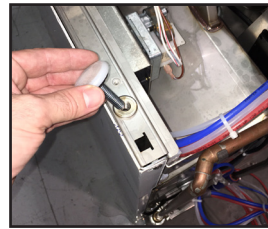
WARNING!

Never attempt to flip or lift the dishmachine alone. Seek help from other personnel or use an appropriate lifting device.

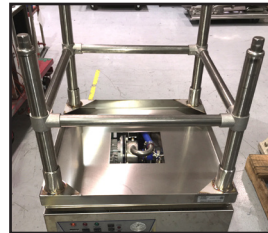
18. Flip the dishmachine over onto its top. Use mop or rags for any leaking water.



19. Remove the four feet from the dishmachine bottom.

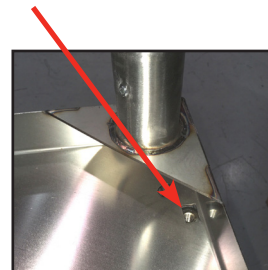


20. Set the stand upside-down on the bottom of the dishmachine, with the rectangular holes in the stand on the sides of the dishmachine.



The stand will only mount to the dishmachine with the rectangular holes positioned on the sides of the dishmachine.

21. Line-up the rectangular holes in the stand with the feet holes on the dishmachine.

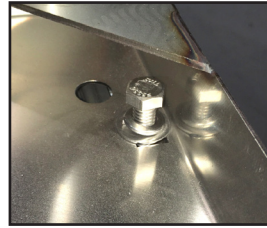


22. Assemble the four bolt and washer combinations provided with the kit. Put the lockwasher on the bolt first and then the flat washer.

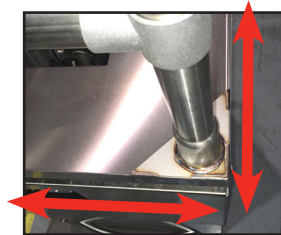


23. Start the four bolts with washers (only a few threads) through the rectangular holes in the stand and into the feet holes on the dishmachine.

Do not tighten bolts all the way down at this point!



24. Align the edges of the stand with the edges of the dishmachine.



25. Using a 9/16" wrench, tighten-down the four bolts.



Tighten bolts all the way down at this point.



WARNING!
Never attempt to flip or lift the dishmachine alone. Seek help from other personnel or use an appropriate lifting device.

26. Flip the dishmachine with stand over onto the feet of the stand.



27. Move the dishmachine to its operating location.
28. Verify the dishmachine is level before making utility connections. The dishmachine can be leveled by turning the adjustable feet on the stand.



CAUTION!
Ensure the dishmachine is level before operating.



29. After the dishmachine is installed and operational, run the dishmachine and ensure there is no excessive vibration or any other source of concern.
30. Keep the stand and underneath free of dirt, soil, and debris.