

AJ/AJX Blower Dryer

Models

AJ/AJX Blower Dryer



Features & Specifications

This Blower Dryer is an accessory device that is bolted to a conveyor style dishmachine to promote drying of china and silverware. It ensures drying with a positive circulation of heated air which completely surrounds the dishes and silverware. With the high velocity air movement it will also assist in the drying of plastic ware and trays.

Design: Unit is provided with a straight unloading table only. It will include a hooded chamber covering the entire 4'-0" table length which provides adequate drying area.

A heavy duty squirrel-cage type industrial fan draws recirculated blower chamber air through a heated device of either electric or steam. The heated air is directed downwards to the drying area through dual nozzles which extend the full width of the conveyor.

A condensation tight ventilation system is required to remove the humidity laden drying air plus maintain desirable working conditions within the dishroom. This exhaust system will be provided by the installing contractor.

Construction: Chamber is constructed of durable stainless steel, heliarc welded and bolted to the dishmachine. An inspection door provides access to the drying section. Included in the hood will be a 4" x 16" (inside dimension) vent with a locking type control damper. Vent stack is located at the entrance of the drying chamber for connecting to the dishroom exhaust ducting.

Removable stainless steel panels enclose the entire external component assembly consisting of heating devices (electric or steam), motor and blower.

The tank portion is constructed of stainless steel with legs and lower cross-members of 2" diameter stainless steel tubing and NSF approved stainless steel feet.

Conveyor mechanism is a center-mounted, heavy-duty, stainless steel pawl bar with stainless steel cast, counter-weighted, wide surface pawls. The pawl bar will be driven from the conveyor drive motor.

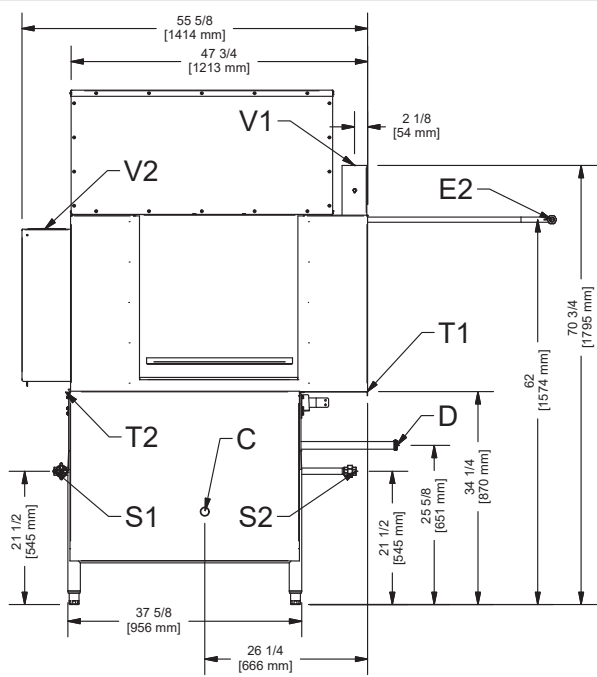
Electric Heat Exchanger: A total of 9kW electric heaters will be used. Thermostatic control and separate over temperature protection are standard. Electrical specifications are 208/60/3, 230/60/3 and 460/60/3.

Blower: Industrial fan type with a squirrel cage wheel. Optimal motor cooling and a compact construction achieved through integrating the voltage controllable external rotor motor into the impeller.

Motor: 208/230v Blower has a 2.1kW or 3.0 hp motor. 460v Blower has a 1.65kW or 2.0 hp motor.

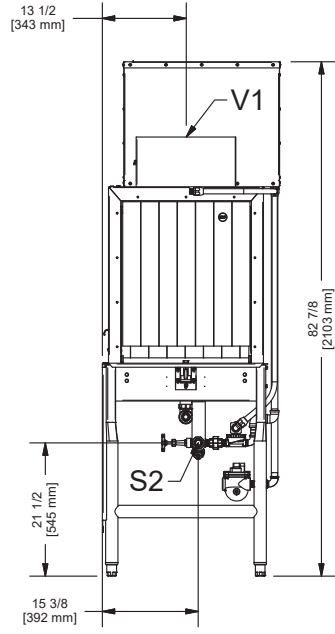
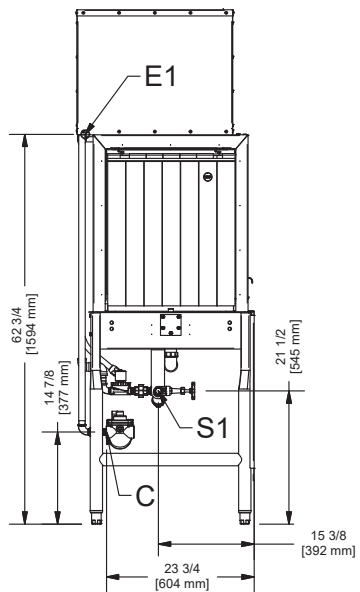
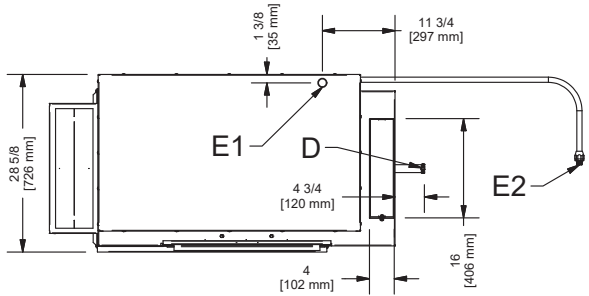
Motor Control: Magnetic-type starter with ambient temperature compensated automatic resetting bimetallic thermal overload protection pre-wired to the motor. Operation will be controlled by the dishmachine control circuitry so the blower dryer will only operate when the dishmachine is running.

AJ/AJX Blower Dryer



- E1 : MAIN ELECTRICAL CONNECTION TO BLOWER
- E2 : CONTROL CONNECTION TO MAIN UNIT
- S1 : MAIN STEAM INLET TO MAIN UNIT & BLOWER
- S2 : STEAM CONNECTION TO MAIN UNIT
- C : CONDENSATE FROM BLOWER
- D : TUB DRAIN CONNECTION TO MAIN UNIT
- V1 : VENTILATION DUCTING CONNECTION
- V2 : COVER FOR OUTLET VENT COWL
- T1 : BLOWER "TABLE" CONNECTION TO MAIN UNIT
- T2 : CONNECTION TO OUTLET TABLE

NOTE:
ALL VERTICAL DIMENSION MAY VARY BY +/- 1.0 INCHES DUE TO ADJUSTABLE FEET



MODEL NO.	MACHINE DIMENSIONS			SHIPPING INFORMATION					
	HEIGHT	WIDTH	DEPTH	WEIGHT	CLASS	CUBE	HEIGHT	WIDTH	DEPTH
AJ/AJX Blower Dryer	82-1/2" (343 mm)	48" (508 mm)	27-3/4" (508 mm)	450 lbs (112 kg)	92.5	168.9 cu. ft.	96" (1067 mm)	76" (838 mm)	40" (737 mm)

*Drawing illustrates a R-L unit
Requires a separate electrical connection*

ELECTRICAL REQUIREMENTS - Steam Heated		AMPS
208/60/3		7.2
230/60/3		6.5
460/60/3		3.0

ELECTRICAL REQUIREMENTS - Electrically Heated		AMPS
208/60/3		32.2
230/60/3		27.3
460/60/3		13.4

HOW TO SPECIFY: AJ/AJX BLOWER DRYER

Jackson WWS, Inc.
Shipping Address: 6209 North U.S. Highway 25E, Gray, KY 40734
Mailing Address: P.O. Box 1060, Barbourville, KY 40906
Telephone: 888-800-5672 • Fax: 606-523-1799
Email: info@jacksonwws.com
07610-004-16-65 [07/25/19]

www.jacksonwws.com

We reserve the right to change specifications in this bulletin without incurring any obligation for equipment previously or subsequently sold.