

# Conserver® XL2

Dual Rack Low Temperature Chemical Sanitizing  
Door-type Dishwasher

## Standard Features

- Accommodates two racks side-by-side
- Fill and Dump design disposes of dirty water, replacing it with a fresh water rinse every cycle
- Electronic timer
- Internal sump design
- Delime mode for easy removal of hard water deposits
- Door-actuated start
- Convenient top-mounted controls
- 17 1/4" (438 mm) vertical inside clearance
- Interchangeable upper and lower stainless steel wash/rinse arms
- Door switch
- Self-draining stainless steel pump eliminates soil/detergent carryover between wash and rinse cycles
- Built-in waste accumulator
- Removable scrap screen
- Built-in chemical pumps and priming switches
- Air gap instead of vacuum breaker
- Low chemical indicator lights
- Wash thermometer
- Single point electrical connection
- Dual point drain connections allow for installation versatility
- Stainless steel adjustable bullet feet
- Durable stainless steel construction



## Specification Statement

Specified unit will be a Jackson Conserver XL2 low temperature chemical sanitizing door-type dishwasher, rated to NSF/ANSI Standard 3 by ETL Sanitation. Unit will be ENERGY STAR® certified. Unit to be rated for 82 racks per hour, 1.13 gallons per rack, and will include an electronic timer and an internal sump. Other features include a 17 1/4 inch vertical inside clearance, interchangeable wash/rinse arms, 1 HP self-draining stainless steel wash pump, built-in chemical pumps and priming switches, delime mode, low chemical indicator lights and built-in waste accumulator. Constructed of durable stainless steel with adjustable bullet feet.

**1-year parts and labor warranty.**

## Options & Accessories

- Water Hammer Arrestor
- Flanged Feet
- Scaltrol
- Replacement Cartridge for Scaltrol
- 36-Compartment Rack  
4-1/8" tall (105 mm)  
5-5/8" tall (143 mm)  
7" tall (178 mm)
- Combination Rack
- Peg Rack

**LEGEND**

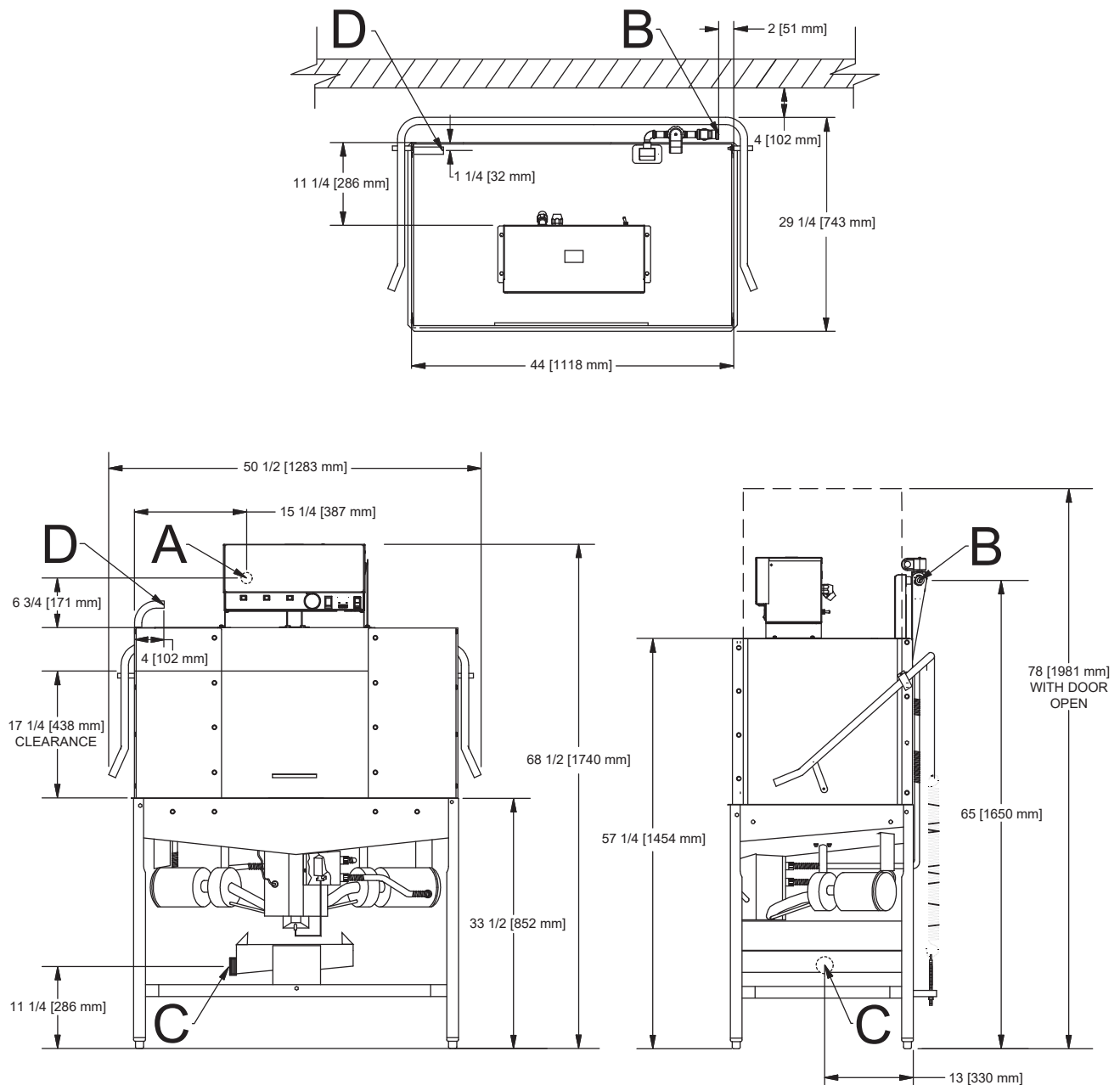
A - Electrical Connection

B - Water Inlet (3/4" NPT)

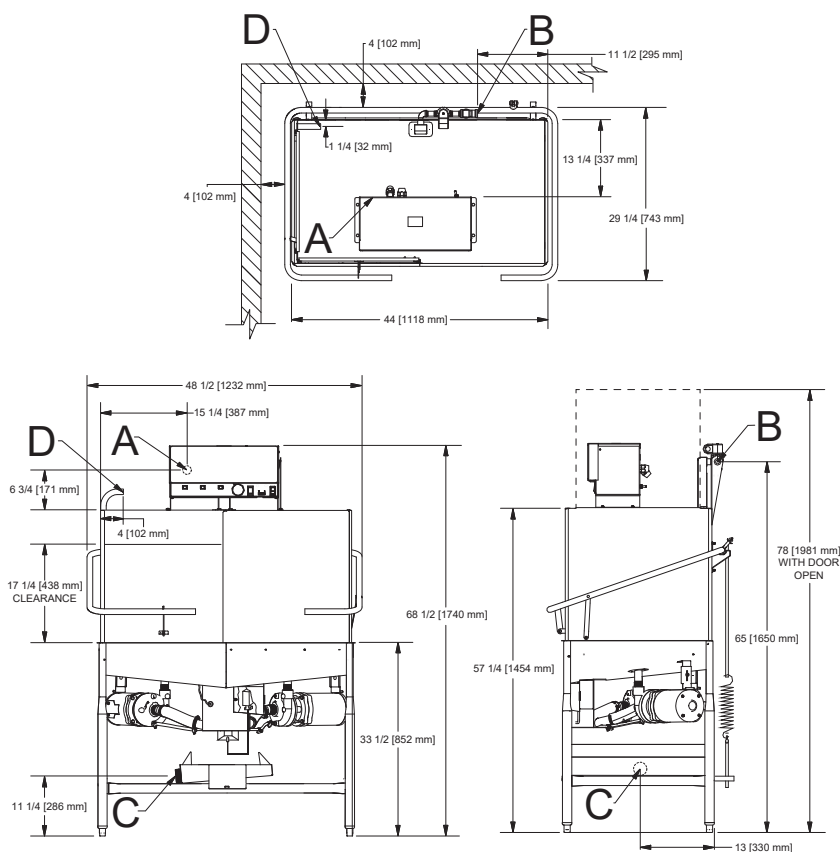
C - Drain Connection (2" NPT)

D - Chemical Connection

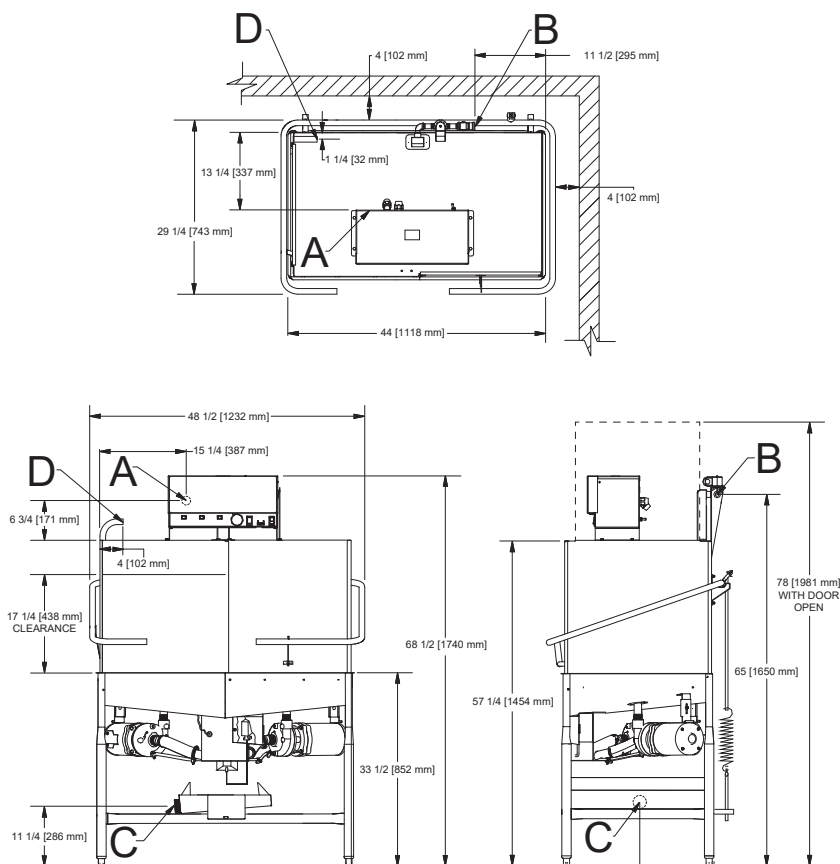
All dimensions from the floor can be increased  
1 1/8" using the machine's adjustable feet.



## Conservar XL2-CML



## Conservar XL2-CMR





### Operating Capacity

Racks per Hour	82 (74)*
Dishes per Hour	2050
Glasses per Hour	2952

### Operating Temperature

Wash Temperature	
Minimum	120 °F (49 °C)
Recommended	140 °F (60 °C)
Rinse Temperature	
Minimum	120 °F (49 °C)
Recommended	145 °F (63 °C)

### Operating Cycle (seconds)

	Wash	Rinse	Dwell	Total Cycle
Normal	53	14	20	87

### Water Consumption

Gallons per Rack	1.13 (4.3 L)
Gallons per Hour	92.66 (350.8 L)
Gallons per Hour**	83.62 (316.5 L)
Wash Tank Capacity (gallons)	1.02 (3.9 L)

### Water Requirements

Incoming Water Temperature	
Minimum	120 °F (49 °C)
Recommended	140 °F (60 °C)
Flow Pressure (PSI)	20 ± 5
Incoming Water Connection (NPT)	3/4"
Drain Connection (NPT)	2"
Minimum Chlorine Required (PPM)	50

### Electrical Specifications

Wash Pump Motor (HP)	1
----------------------	---

Power Supply	Total Load	Minimum Circuit Ampacity	Maximum Overcurrent Protection
115/60/1	20.0 A	22.5 A	30.0 A
208/60/1	10.0 A	11.3 A	15.0 A
230/60/1	10.0 A	11.3 A	15.0 A

### Dimensions

Width	44" (1118 mm)
Depth	29 1/4" (743 mm)
Height	68 1/2" (1740 mm)
Height with Door Open	78" (1981 mm)
Inside Clearance Height	17 1/4" (438 mm)
Wall Clearance	
Rear	4" (102 mm)
Side (Corner Units)	4" (102 mm)
Drain Height	11 1/4" (286 mm)
Weight	285 lbs (129 kg)

### Shipping Details

Shipping Weight	330 lbs (150 kg)
Shipping Width	60" (1524 mm)
Shipping Depth	38" (965 mm)
Shipping Height	70" (1778 mm)
Shipping Cube	92.36 cu ft
Shipping Class	300

Advisory: Jackson WWS, Inc. DOES NOT endorse "Tankless On-Demand" water heaters for use with our dishmachines. Jackson WWS, Inc. DOES endorse, and highly recommends, standard "tank" style water heaters, sized to properly handle the water heating requirements of the facility.

\*Racks per hour calculated with NSF suggested load time of :05 for door-type (straight thru) dishmachines. The load time is doubled in our calculation because this unit is a dual-rack dishmachine.

\*\*Gallons per hour calculated with NSF suggested load time of :05 for door-type (straight thru) dishmachines. The load time is doubled in our calculation because this unit is a dual-rack dishmachine.

## Contact Jackson

07610-002-66-64 [09/01/23]

#### Address

6209 N U.S. Highway 25E  
Gray, Kentucky 40734

#### Telephone & Fax

T 888.800.5672  
F 606.523.1799

#### Email

customer.service@jacksonwws.com



JACKSONWWS.COM



JACKSON WAREWASHING SYSTEMS



JACKSON WWS

We reserve the right to change specifications in this document without incurring any obligation for equipment previously or subsequently sold.