

Delta® 1200

Low Temperature Chemical Sanitizing
Rotary Glasswasher

Standard Features

- Automatic conveyor system with composite carousel to prevent damage to glasses, mugs and stemware
- 12" clearance allows cleaning of taller glassware
- Clockwise rotation
- Single switch, auto-fill operation
- Simplified front access to all controls and chemical settings
- Solid-state and electromechanical controls
- Wash and rinse temperature gauges
- Adjustable rinse control allows hot or cold water final rinse for flexible sanitizing methods
- Removable upper and lower wash/rinse arms with removable end caps for easy cleaning
- Low-water protection for pump and wash tank heating element
- Fits compactly underbar
- Convenient chemical storage inside the machine
- Gravity drain
- Built-in chemical pumps and priming switches
- Efficient 1/10 HP wash pump
- Conveniently located conveyor drive motor
- Quick-removal side panel allows tool-free access to vacuum breakers for ease of service
- Double-wall cabinet for quiet operation and heat retention
- Adjustable bullet feet
- Durable stainless steel construction



Delta® 1200

Specification Statement

Specified unit will be a Jackson Delta 1200 chemical sanitizing rotary glasswasher with clockwise rotation, and a composite carousel conveyor that prevents damage to glassware. Unit will be NSF rated, and will include detergent, rinse aid and sanitizer pumps with priming switches. Unit to be rated for 1,200 glasses per hour. Features include wash tank heating element, 1/10 HP wash pump motor, low-water protection for wash pump and wash tank heating element, choice of hot- or cold-water final rinses, gravity drain, chemical storage inside unit, and double-wall cabinet. 208/60/1 or 230/60/1. Constructed of durable stainless steel with adjustable bullet feet.

1-year parts and labor warranty.

Options & Accessories

- Pressure Regulator
- Water Hammer Arrestor
- Scrap Tray
- Scale Prevention System (SPS)
- Replacement Cartridge for SPS



**Get sparkling results
fast on our high
speed carousel!**

- Composite carousel rack prevents chipping and damage to glassware
- Glass-activated shut off mechanism for hands-free operation
- Easy-to-clean upper and lower wash and rinse arms with removable end caps
- 12" clearance accommodates taller stemware, glasses, and mugs
- Internal rinse water tempering valve for compatibility with chlorine or iodine sanitizers
- Gravity drain
- Built-in chemical pumps and priming switches
- Convenient onboard chemical storage for three one-gallon containers
- Double-wall cabinet for quiet operation and reduced heat loss
- Available voltages
 - 115/60/1 (Delta 115)
 - 208/60/1 or 230/60/1 (Delta 1200)



Low Temp



10

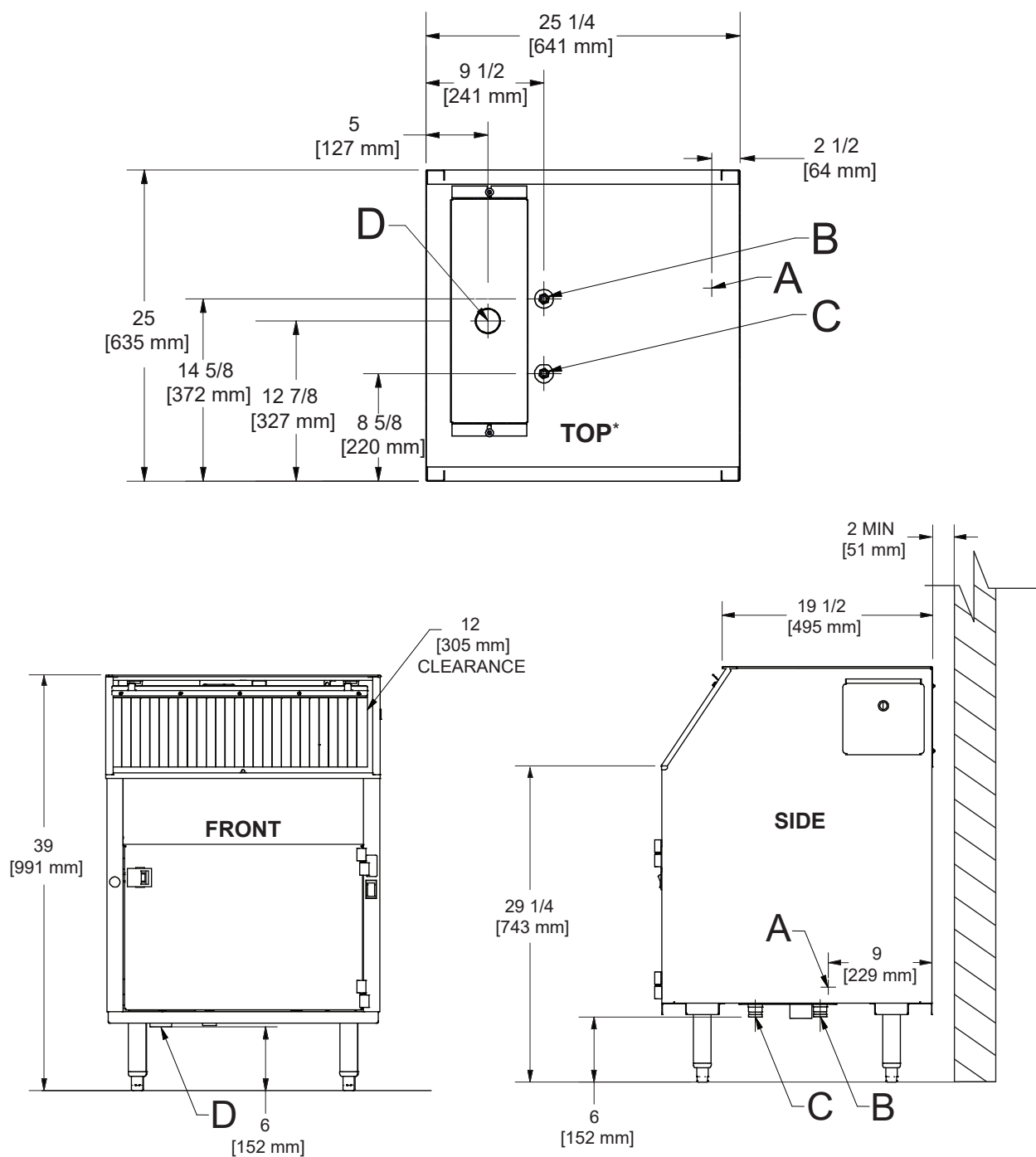


1,200

LEGEND

- A - Electrical Connection
- B - Water Inlet, Hot, 1/2"
- C - Water Inlet, Cold, 1/2"
- D - Drain Connection, 2"

All dimensions from the floor can be increased 1 1/4" using the machine's adjustable feet.



Operating Capacity
 Glasses per Hour 1,200
Operating Temperature
 Wash Temperature (minimum) 130 °F (55 °C)

 Rinse Temperature (minimum) 75 °F (24 °C)
Operating Cycle (seconds)
 Total Cycle 120
Water Consumption
 Gallons per Hour 10.0 (37.9 L)

 Wash Tank Capacity (gallons) 3.0 (11.4 L)
Water Requirements
 Incoming Water Temperature 130 °F (55 °C)

 Flow Pressure (PSI) 20 ± 5

 Incoming Water Connection (NPT) 1/2"

 Drain Connection (NPT) 2"
Electrical Specifications
 Wash Pump Motor (HP) 1/10

Wash Tank Heater (kW)

 208v 2.7

 230v 3.3
Chemical Specifications
 Sodium Hypochlorite (PPM) 50

 Iodophor (PPM) 12.5

Power Supply	Total Load	Minimum Circuit Ampacity	Maximum Overcurrent Protection
208/60/1	13.4 A	13.5 A	15.0 A
230/60/1	14.7 A	14.8 A	15.0 A

Dimensions

Width	25 1/4" (641 mm)
Depth	25" (635 mm)
Height	39" (991 mm)
Inside Clearance Height	12" (305 mm)
Wall Clearance	2" (51 mm)
Drain Height	6" (152 mm)
Weight	195 lbs (88 kg)

Shipping Details

Shipping Weight	210 lbs (95 kg)
Shipping Width	28" (711 mm)
Shipping Depth	28 1/2" (724 mm)
Shipping Height	51 3/4" (1314 mm)
Shipping Cube	23.90 cu ft
Shipping Class	100

Contact Jackson

07610-002-66-57 [09/01/23]

Address
 6209 N U.S. Highway 25E
 Gray, Kentucky 40734
Telephone & Fax
 T 888.800.5672
 F 606.523.1799
Email

customer.service@jacksonwws.com



JACKSONWWS.COM



JACKSON WAREWASHING SYSTEMS



JACKSON WWS

We reserve the right to change specifications in this document without incurring any obligation for equipment previously or subsequently sold.