

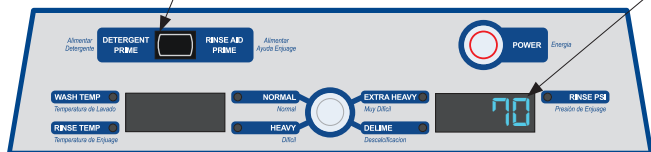
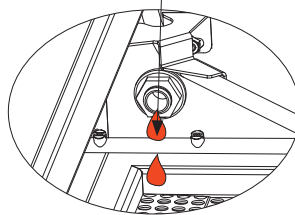
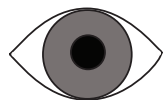
10



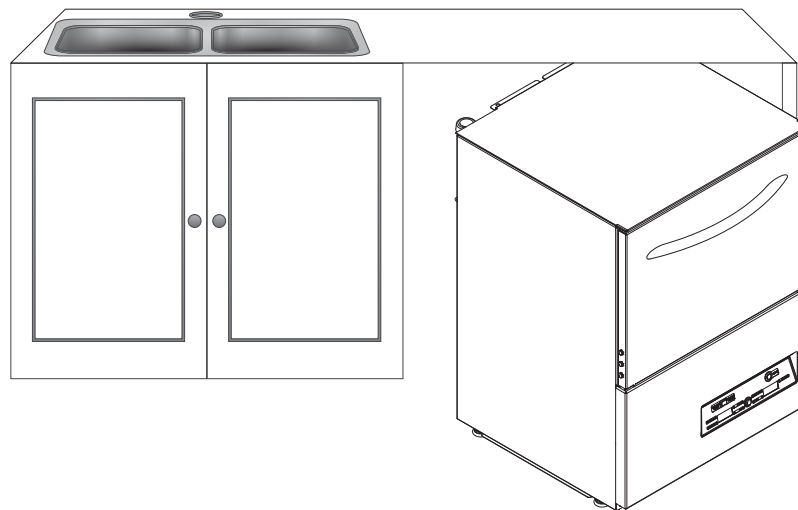
Hold for three seconds. Time will display.

Mantenga durante tres segundos. Aparecerá el tiempo.

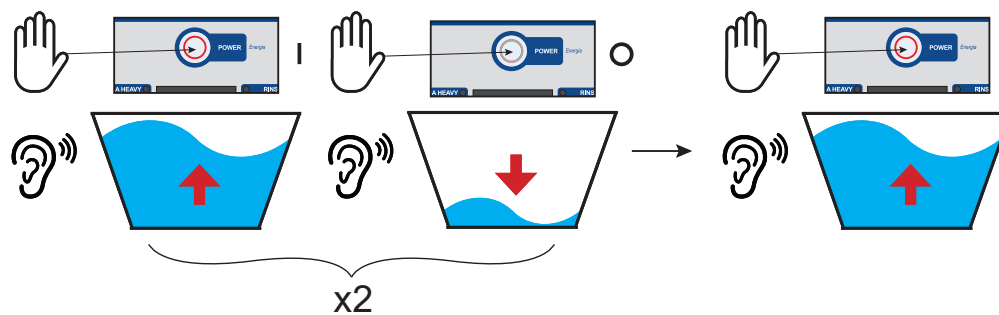
Maintenez la main pendant trois secondes. Le temps s'affichera.



13



14



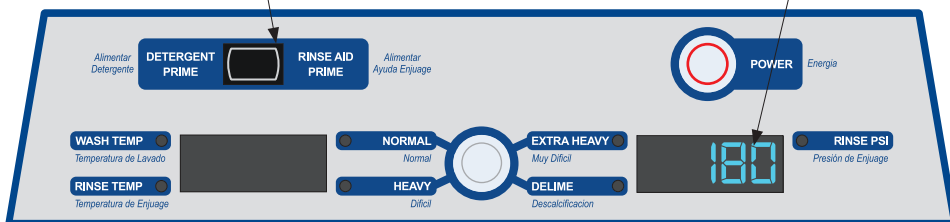
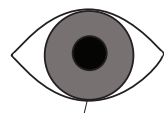
11



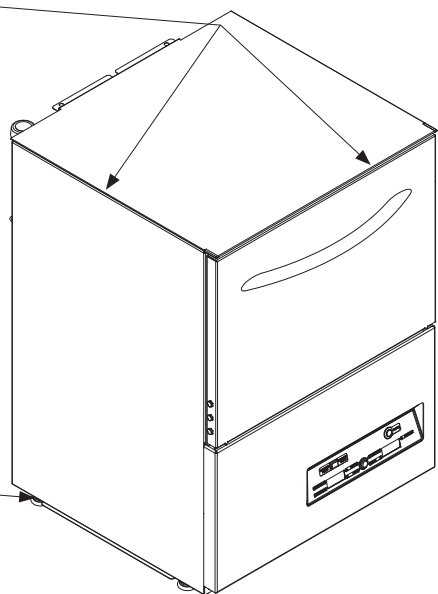
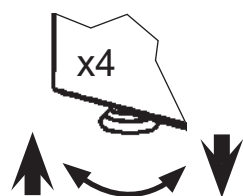
Hold for three seconds. Time will display.

Mantenga durante tres segundos. Aparecerá el tiempo.

Maintenez la main pendant trois secondes. Le temps s'affichera.



12



For Technical Support, call the number below.

For the DishStar® HT Manual, scan the code below or go to our website.



1.888.800.5672
www.jacksonwvs.com



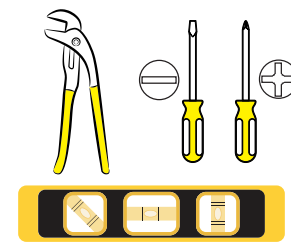
Warewashing Systems

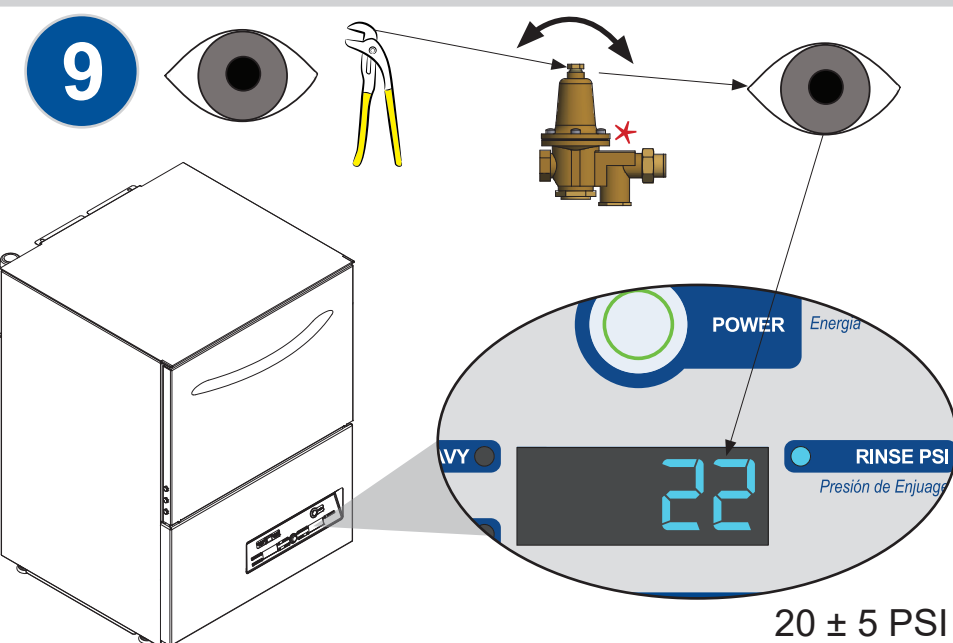
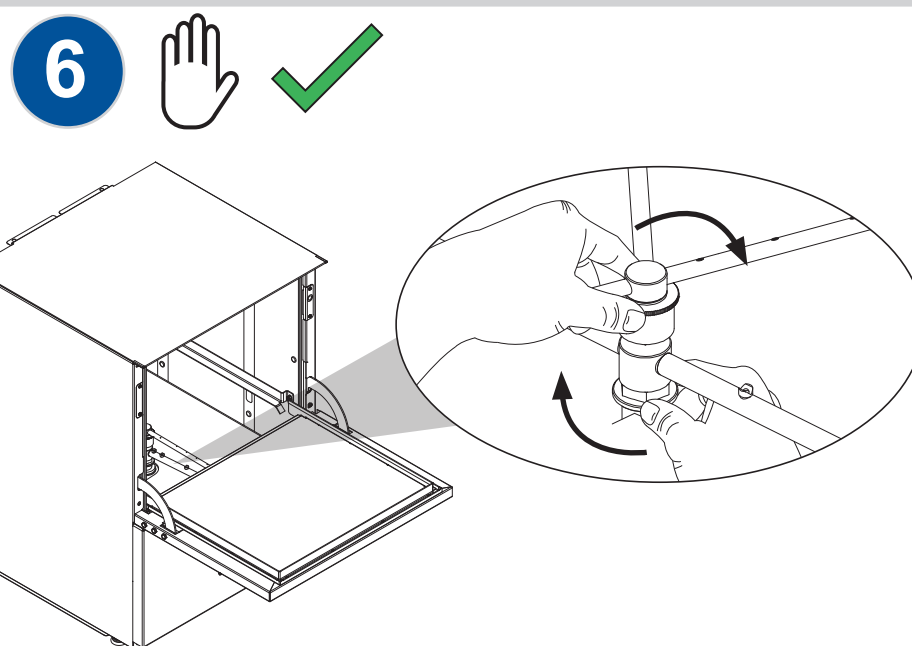
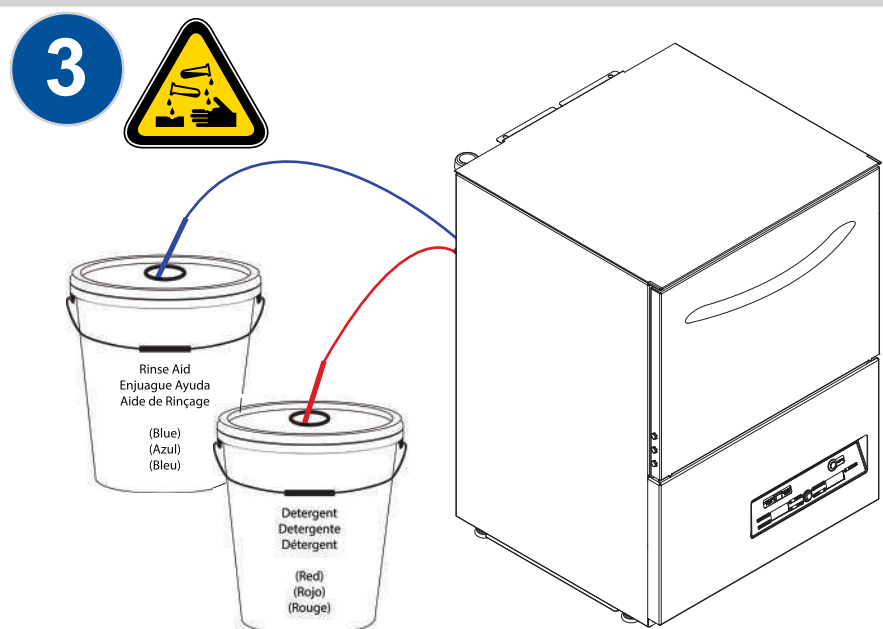
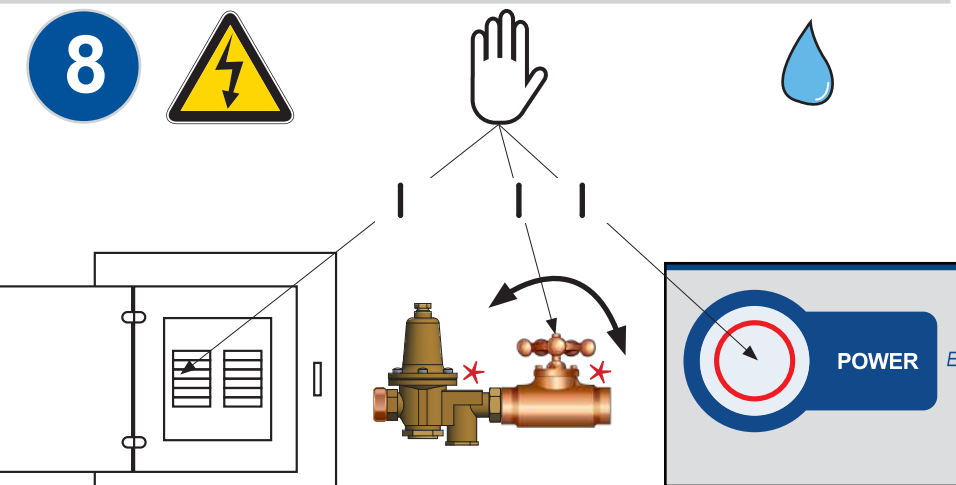
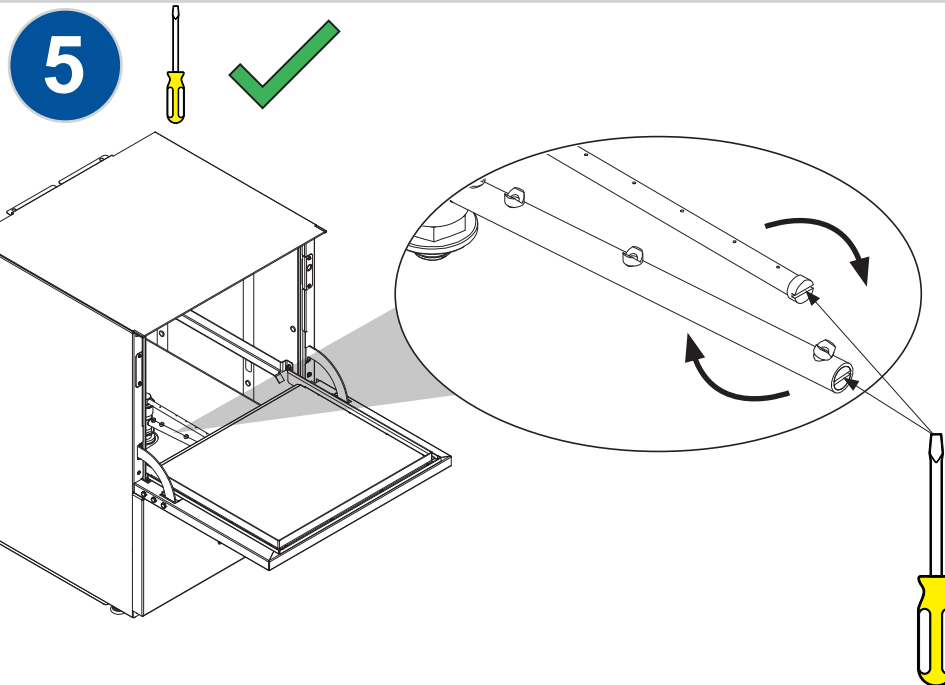
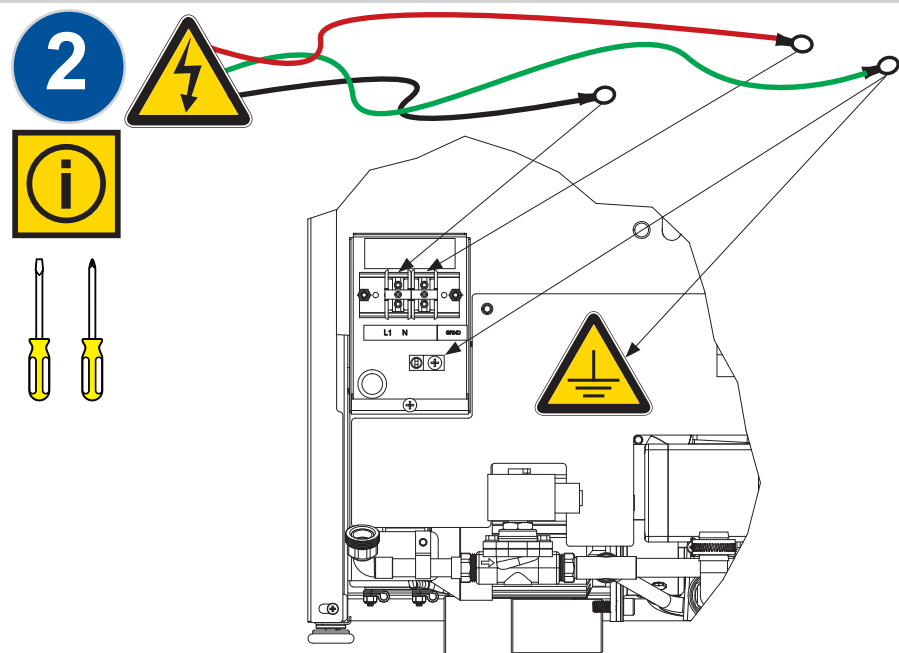
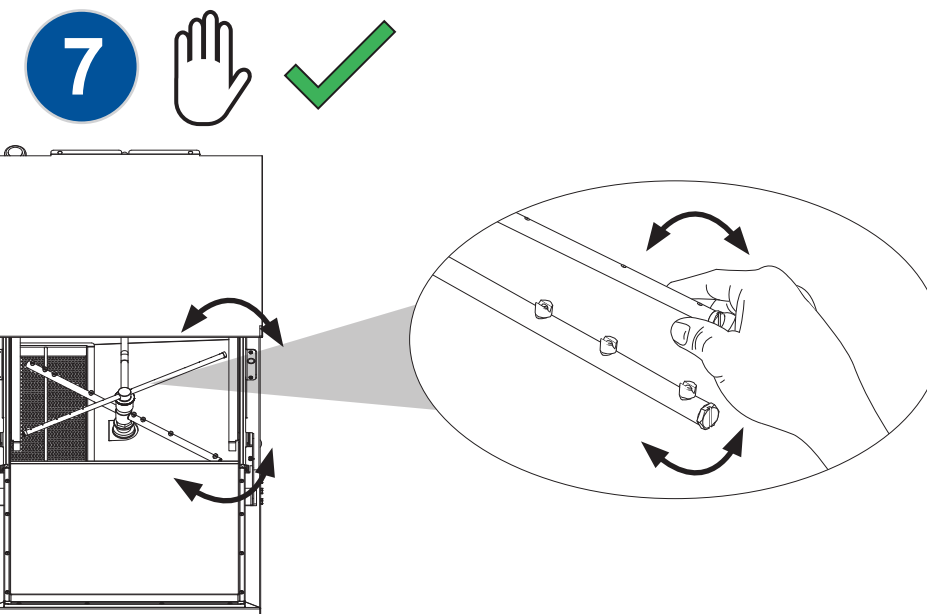
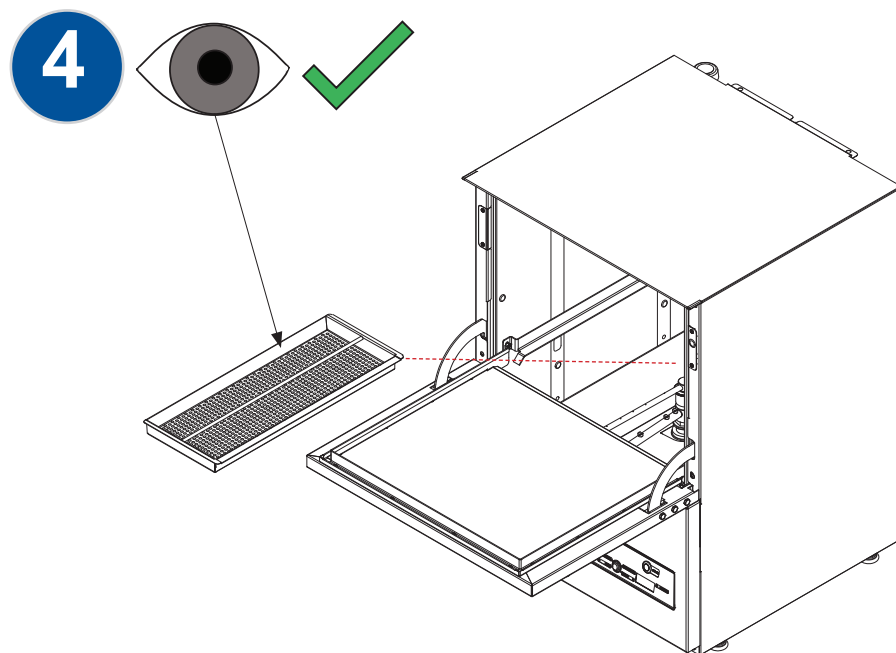
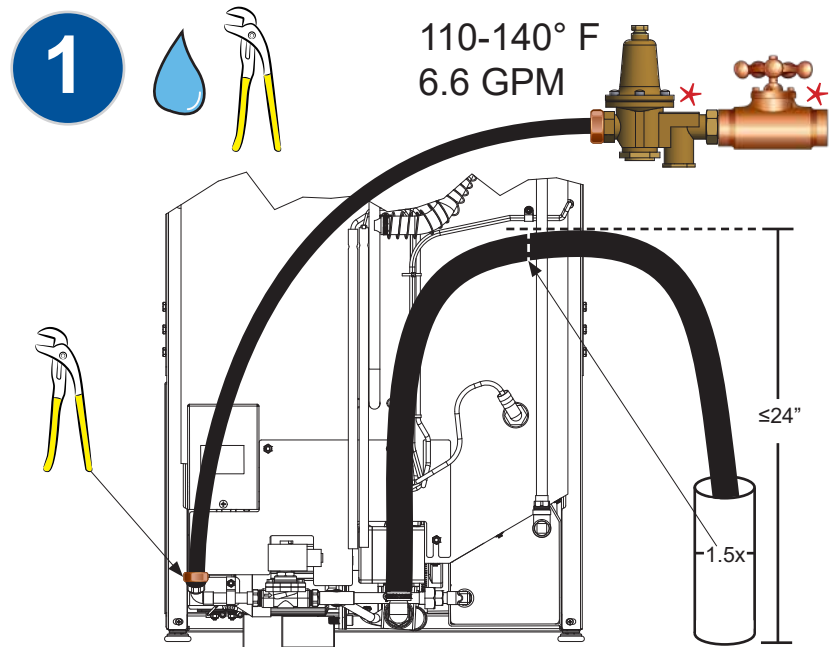
INSTALLATION
QUICK GUIDE

DISHSTAR® HT



- = risk of electric shock / riesgo de electrocución / risque de décharge électrique
- = caustic chemicals / químicos cáusticos / produits chimiques caustiques
- = ground wire / cable a tierra / fil de terre
- = verify / verificar / vérifier
- = use fingers/hands / utilizar los dedos/manos / utilisez vos doigts/mains
- = use eyes / utiliza tus ojos / utilisez vos yeux
- = reference data plate / mire la placa de datos / regarder la plaque signalétique
- = water / agua / eau
- = not supplied / no se suministra / non fourni
- = listen / escuchar / écoute
- = on / encendido / allumé
- = off / apagado / éteint





20 ± 5 PSI