



Project \_\_\_\_\_

Item \_\_\_\_\_

Quantity \_\_\_\_\_

CSI Section 11400

# DishStar® LT/LTH

Low Temperature Chemical Sanitizing  
Undercounter Dishwasher

## Standard Features

- Fill and dump design
- Push button start
- Automatic tank fill
- Fresh-water rinse eliminates wash water contamination
- 1500 watt sustaining heater (DishStar LTH only)
- Solid-state controls
- Delime cycle
- Automatic pumped drain for floor and wall drain installations
- Built-in chemical pumps and priming switches
- Double-wall cabinet for quiet operation and heat retention
- Powerful 1 HP stainless steel wash pump
- Above-water scrap basket
- Low chemical indicator light alerts operator when detergent and rinse aid are low
- Labyrinth-type door seal design
- Door switch
- Durable stainless steel construction
- One (1) each peg and combination rack included

### Notes:

A vent hood is not recommended above the Jackson DishStar LT/LTH, as they do not produce excessive vapors. *Always check with the local building code to know what type of ventilation is required for commercial dishmachine installations in your area.*

Normal operation of the DishStar LT/LTH generate steam that may escape from the door. Materials such as wood laminate, veneers, etc. are unsuitable for use in areas exposed to dishwasher steam and detergents. Stainless steel or other moisture-resistant shields are recommended for surfaces adjacent to DishStar LT/LTH sides and top.



DishStar® LT/LTH

## Specification Statement

Specified unit will be a Jackson DishStar LT low temperature chemical sanitizing undercounter dishwasher, rated to NSF/ANSI Standard 3 by ETL Sanitation. Unit will be ENERGY STAR® certified. Unit to be rated for 30 racks per hour, 1.16 gallons per rack. Unit to include detergent and rinse aid pumps and priming switches. Other features include solid-state controls, automatic tank fill, push button start, delime cycle, above-water scrap basket, 1 HP stainless steel wash pump motor, pumped drain, labyrinth-type door seal, and double-wall cabinet. Constructed of durable stainless steel.

**1-year parts and labor warranty.**

## Options & Accessories

- Water Hammer Arrestor
- Scale Prevention System (SPS)
- Replacement Cartridge for SPS
- Rear Dress Panel
- Tie Down
- Casters (set of four)
- Machine Stand
  - 6" (152 mm) height
  - 18" (457 mm) height
- 36-Compartment Rack
  - 4-1/8" tall (105 mm)
  - 5-5/8" tall (143 mm)
  - 7" tall (178 mm)
- Combination Rack
- Peg Rack





## DishStar® LT

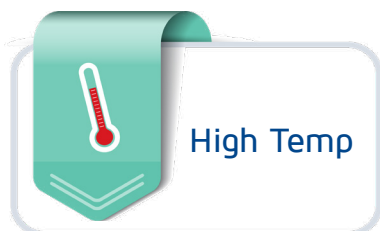
The resource-efficient fill and dump design of the Jackson DishStar LT provides exceptional cleaning performance while consuming just 1.16 gallons of water per rack. The normal cycle allows for 30 racks per hour, which is enough capacity to clean 750 dishes or 1,080 glasses per hour. The DishStar LT is simple to operate with automatic fill and push button start. Other features include solid-state controls, pumped drain, above-water scrap basket, and double-wall construction.



Halo Wash Arm



Above-water Scrap Basket



## LEGEND

A - Electrical Connection

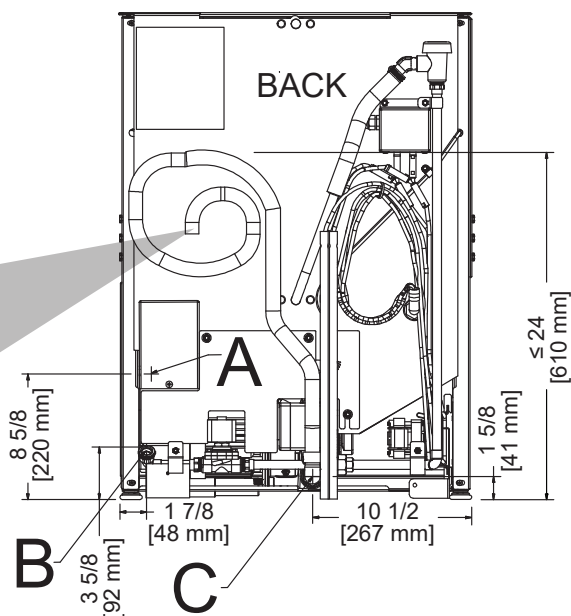
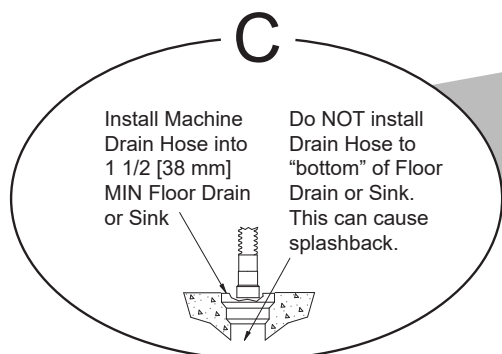
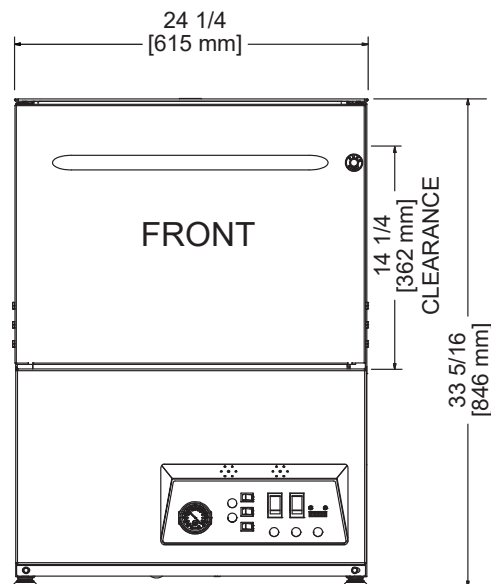
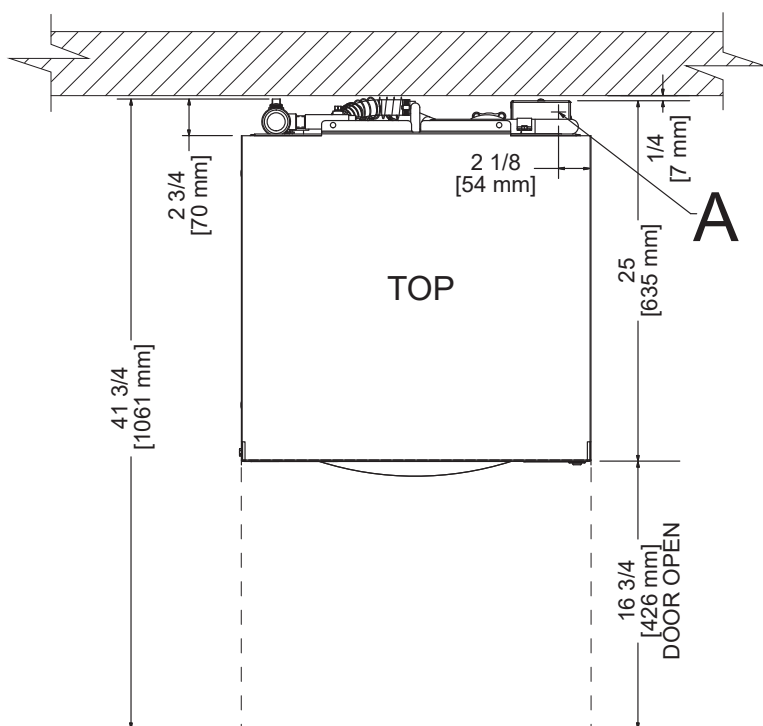
B - Water Inlet (with 5' Hose)  
(3/4" Male GHT, connect to true  
1/2" ID line, MIN 120 °F)

C - Drain Hose

(1" ID, install into 1 1/2" MIN Drain with Air-gap)

All dimensions from the floor can be increased 1" using the machine's adjustable feet.

Optional casters increase height of unit by 3/4"





**Warewashing Systems**

# DishStar® LT/LTH

Low Temperature Chemical Sanitizing  
Undercounter Dishwasher

## Operating Capacity

Racks per Hour	30 (24)*
Dishes per Hour	750
Glasses per Hour	1,080

## Operating Temperature

Wash Temperature	
Minimum	120 °F (49 °C)
Recommended	140 °F (60 °C)
Rinse Temperature	
Minimum	120 °F (49 °C)
Recommended	140 °F (60 °C)

## Operating Cycle (seconds)

	Wash	Rinse	Dwell	Total Cycle
Normal	56	35	29	120

## Water Consumption

Gallons per Rack	1.16 (4.4 L)
Gallons per Hour	34.80 (131.7 L)
Gallons per Hour**	27.84 (105.4 L)
Wash Tank Capacity (gallons)	1.20 (4.5 L)

## Water Requirements

Incoming Water Temperature	
Minimum	120 °F (49 °C)
Recommended	140 °F (60 °C)
Flow Pressure (PSI)	20 ± 5
Incoming Water Connection (NPT)	3/4" Male GHT
	(connect to true 1/2" ID line)
Drain Connection (ID)	1"

## Electrical Specifications

Wash Pump Motor (HP)	1
Wash Tank Heater (kW) (DishStar LT-H model)	1.5

Model	Power Supply	Total Load	Minimum Circuit Ampacity	Maximum Overcurrent Protection
DishStar LT	115/60/1	10.0 A	12.5 A	20.0 A
DishStar LTH	115/60/1	10.0 A	16.25 A	20.0 A

## Dimensions

Width	24 1/4" (615 mm)
Depth	25" (635 mm)
Depth with Door Open	41 3/4 (1061 mm)
Height	33 5/16" (846 mm)
Inside Clearance Height	14 1/4" (362 mm)
Wall Clearance	1/4" (7 mm)
Drain Height	1 5/8" (41 mm)
Weight	
DishStar LT	192 lbs (87 kg)
DishStar LTH	196 lbs (89 kg)

## Shipping Details

Shipping Weight	
DishStar LT	207 lbs (94 kg)
DishStar LTH	211 lbs (96 kg)
Shipping Width	29" (737 mm)
Shipping Depth	30" (762 mm)
Shipping Height	39" (991 mm)
Shipping Cube	19.64 cu ft
Shipping Class	85

\*Racks per hour calculated with NSF suggested load time of :30 for front opening dishmachines.

\*\*Gallons per hour calculated with NSF suggested load time of :30 for front opening dishmachines.

## Contact Jackson

07610-003-34-04 [09/01/23]

### Address

6209 N U.S. Highway 25E  
Gray, Kentucky 40734

### Telephone & Fax

T 888.800.5672  
F 606.523.1799

### Email

customer.service@jacksonwws.com



JACKSONWWS.COM



JACKSON WAREWASHING SYSTEMS



JACKSON WWS

We reserve the right to change specifications in this document without incurring any obligation for equipment previously or subsequently sold.