

SERVICE MANUAL

FOR JACKSON MODEL:

CONSERVER I



MANUFACTURERS WARRANTY

ONE YEAR LIMITED PARTS & LABOR WARRANTY

ALL NEW JACKSON DISHWASHERS ARE WARRANTED TO THE ORIGINAL PURCHASER TO BE FREE FROM DEFECTS IN MATERIAL OR WORKMANSHIP, UNDER NORMAL USE AND OPERATION FOR A PERIOD OF (1) ONE YEAR FROM THE DATE OF PURCHASE, BUT IN NO EVENT TO EXCEED (18) EIGHTEEN MONTHS FROM THE DATE OF SHIPMENT FROM THE FACTORY.

Jackson MSC agrees under this warranty to repair or replace, at its discretion, any original part which fails under normal use due to faulty material or workmanship during the warranty period, providing the equipment has been unaltered, and has been properly installed, maintained and operated in accordance with the applicable factory instruction manual furnished with the machine and the failure is reported to the authorized service agency within the warranty period. This includes the use of factory specified genuine replacement parts, purchased directly from a Jackson authorized parts distributor or service agency. Use of generic replacement parts may create a hazard and void warranty certification.

The labor to repair or replace such failed part will be paid by Jackson MSC, within the continental United States, Hawaii and Canada, during the warranty period provided a Jackson MSC authorized service agency, or those having prior authorization from the factory, performs the service. Any repair work by persons other than a Jackson MSC authorized service agency is the sole responsibility of the customer. Labor coverage is limited to regular hourly rates, overtime premiums and emergency service charges will not be paid by Jackson MSC.

Accessory components not installed by the factory carry a (1) one year parts warranty only. Accessory components such as table limit switches, pressure regulators, pre rinse units, etc. that are shipped with the unit and installed at the site are included. Labor to repair or replace these components is not covered by Jackson MSC.

This warranty is void if failure is a direct result from shipping, handling, fire, water, accident, misuse, acts of god, attempted repair by unauthorized persons, improper installation, if serial number has been removed or altered, or if unit is used for purpose other than it was originally intended.

TRAVEL LIMITATIONS

Jackson MSC limits warranty travel time to (2) two hours and mileage to (100) one hundred miles. Jackson MSC will not pay for travel time and mileage that exceeds this, or any fees such as those for air or boat travel without prior authorization.

WARRANTY REGISTRATION CARD

The warranty registration card supplied with the machine must be returned to Jackson MSC within 30 days to validate the warranty.

REPLACEMENT PARTS WARRANTY

Jackson replacement parts are warranted for a period of 90 days from the date of installation or 180 days from the date of shipment from the factory, whichever occurs first.

PRODUCT CHANGES AND UPDATES

Jackson MSC reserves the right to make changes in design and specification of any equipment as engineering or necessity requires.

THIS IS THE ENTIRE AND ONLY WARRANTY OF JACKSON MSC. JACKSON'S LIABILITY ON ANY CLAIM OF ANY KIND, INCLUDING NEGLIGENCE, WITH RESPECT TO THE GOODS OR SERVICES COVERED HEREUNDER, SHALL IN NO CASE EXCEED THE PRICE OF THE GOODS OR SERVICES OR PART THEREOF WHICH GIVES RISE TO THE CLAIM.

THERE ARE NO WARRANTIES, EXPRESSED OR IMPLIED, INCLUDING FOR FITNESS OR MERCHANTABILITY, THAT ARE NOT SET FORTH HEREIN, OR THAT EXTEND BEYOND THE DURATION HEREOF. UNDER NO CIRCUMSTANCES WILL JACKSON MSC BE LIABLE FOR ANY LOSS OR DAMAGE, DIRECT OR CONSEQUENTIAL, OR FOR THE DAMAGES IN THE NATURE OF PENALTIES, ARISING OUT OF THE USE OR INABILITY TO USE ANY OF ITS PRODUCTS.

ITEMS NOT COVERED

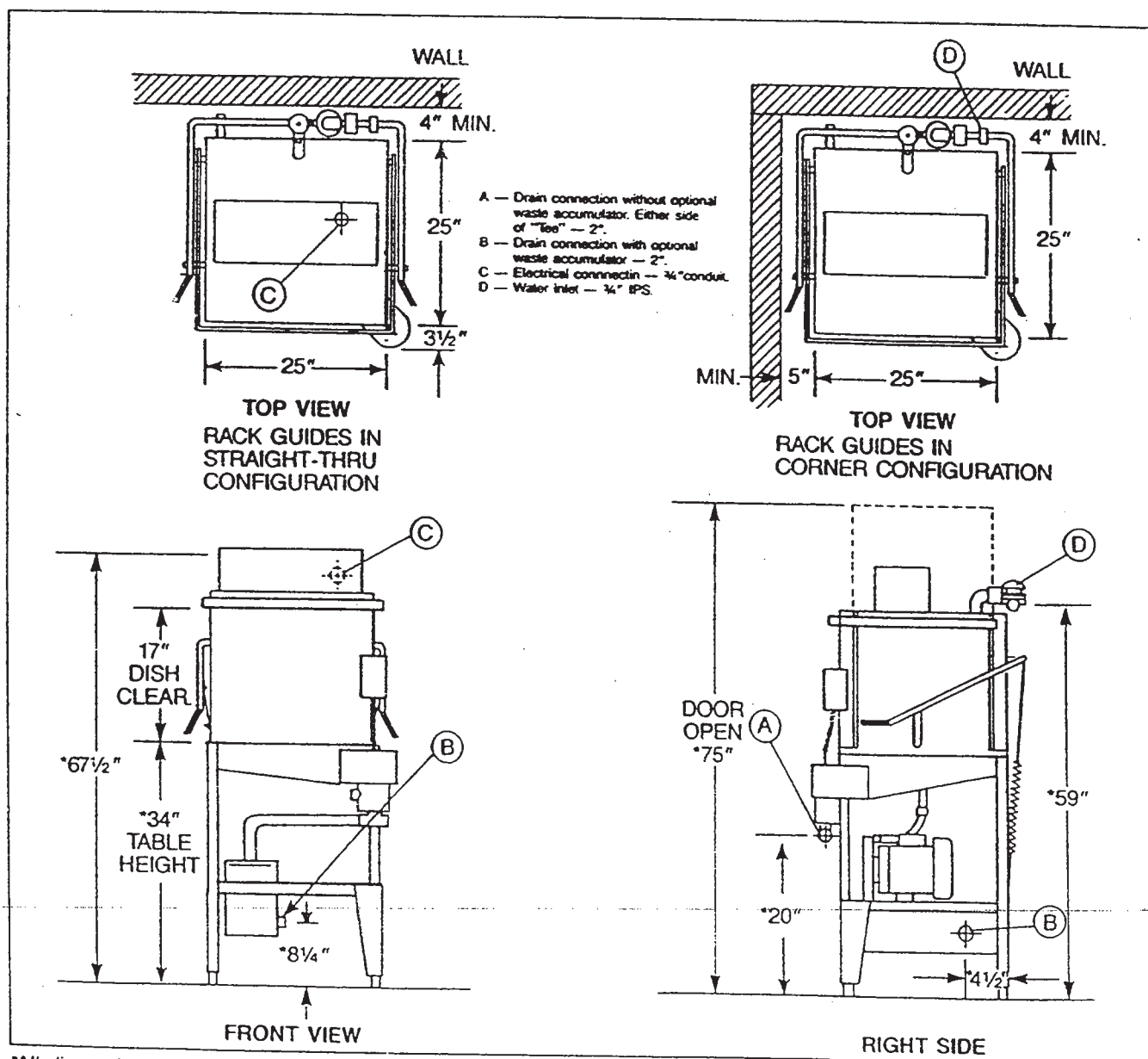
This warranty does not cover cleaning or deliming of the unit or any component such as, but not limited to, wash arms, rinse arms, or strainers at anytime. Nor does it cover adjustments such as, but not limited to, timer cams, thermostats or doors, beyond 30 days from the date of installation. In addition, the warranty will only cover the replacement of wear items such as curtains, drain balls, door guides or gaskets during the first 30 days after installation. Also not covered are conditions caused by the use of incorrect (non-Commercial) grade detergents, incorrect water temperature or pressure, or hard water conditions.

TABLE OF CONTENTS

<u>Description of Page</u>	<u>Page Number</u>
Specifications	3
General Installation Instructions	4
How to Operate Your Machine	6
General Maintenance	8
Wash Rinse Head Assembly	10
Timer Adjustments	11
Timer Assembly	12
Function of Circuit Breaker, Switches, Indicator Light & Cycle Counter	13
Replacement of Switches in the Control Panel	14
Peristaltic Pump Sanitizing Dispensing System	15
Sanitizing Agent Injector	16
Removal of Pump and Motor from Unit	17
Replacing Seal and Ceramic on Wash/Rinse Pump Assembly	18
Service Instructions (Incoming Water Solenoid Valve)	19
Applying Nylatron Strip to Conserver Door	20
Instructions for Adjusting Tension of Cantilever	21
Troubleshooting Guide	23
Front View Corner Model	25
Back Side View Straight-Through Model	26
Right Side View Straight-Through Model	27
Left Side View Straight Through Model	28
Incoming Plumbing, Vacuum Breaker and Mercury Relay	29
Electrical Drawings	30
Parts List	32
Ordering Replacement Wire	36
Conduit and Fittings	37
Ordering Replacement Fasteners	38
Ordering Replacement Hose and Tubing	40
Jackson Maintenance and Repair Centers	41
Important Information Data Sheet	48

SPECIFICATIONS

Operating Capacity		Thermometers		Wash Pump Motor	
Racks per Hour (NSF Rated)	38	Wash - °F	140	Horsepower	1
Dishes per Hour	950	Rinse - °F	140	Dimensions	
Glasses per Hour	950	Water Requirements (NSF Rated)		Depth	25"
Operating Cycle		Inlet Temperature - °F	140	Width	25"
Total Cycle — Sec.	90	Gallons per Hour	114	Height	52¾"
Wash Tank Capacity		Flow Pressure PSI	20	Standard Table Height	34"
Gallons	2.5	Flow GPM	10.5	Maximum Clearance for Dishes	17"
Wash Pump Capacity		Inlet IPS	¾"	Racks	
Gallons per Minute	55	Drain IPS	2"	Dish, 19¾ x 19¾	Optional
Electrical Rating		Shipping Weight		Combination	Optional
Volts	115	Phase	1 (3 Wire)	Approx. Basic Model	300
Cycle	60	Total Load Amps	13		



*All dimensions from floor are adjustable $\pm \frac{1}{2}$ " due to bullet feet.

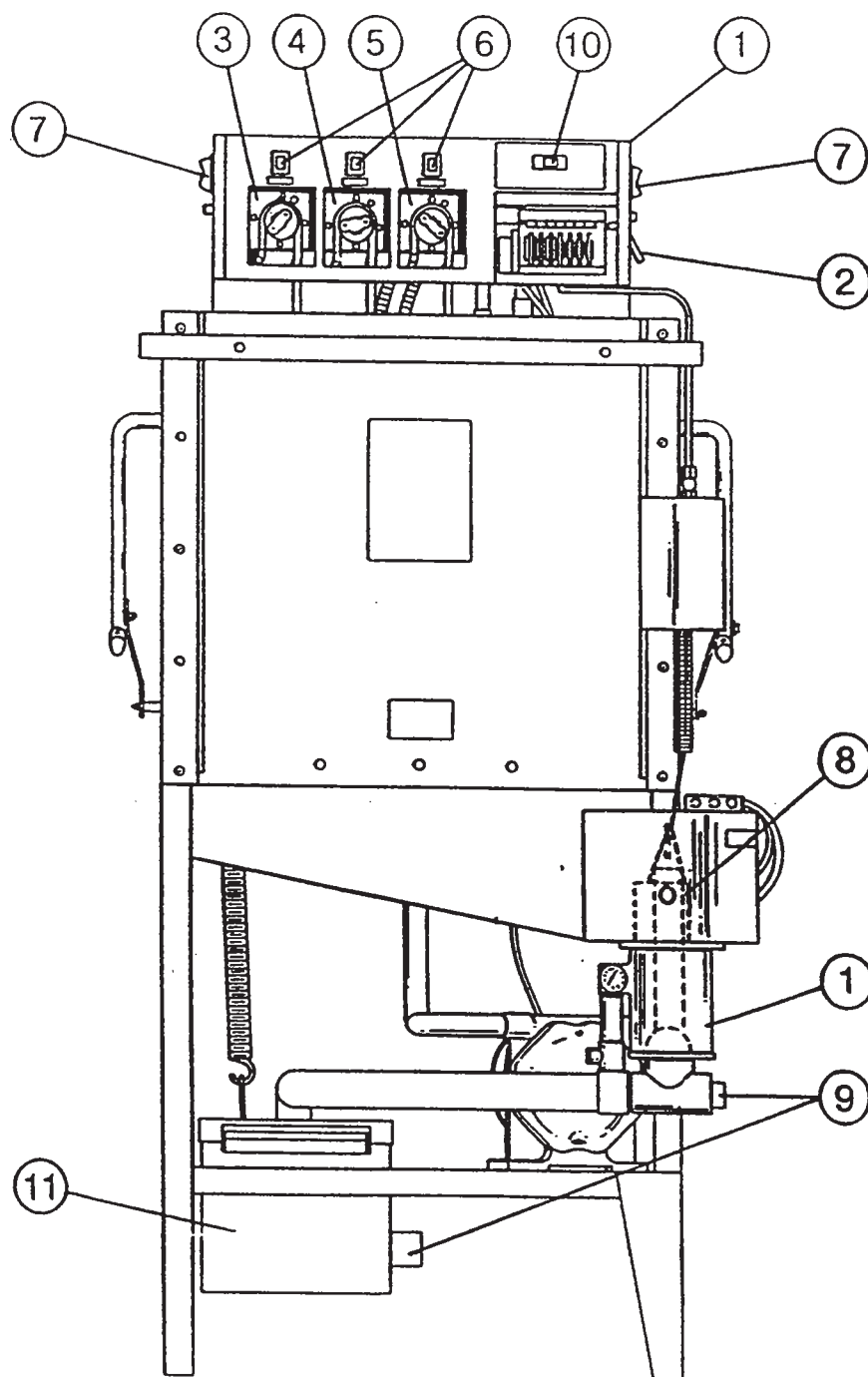
GENERAL INSTRUCTIONS

(INSTALLATION)

Note: Read the following instructions carefully, proper installation of your Conserver Dishwasher will ensure proper machine operation.

1. Cut straps holding machine to base of crate, ease machine on to floor and move into place of installation.
2. Connect drain line to bottom of machine (2 IPS female fitting on front of machine) to conform with local and/or national codes. Drain is a gravity feed system from the machine.
 - a. The Conserver is designed to accommodate an external scrap trap if one is shipped with the unit. The scrap trap should be placed beneath the unit with the top opening to the right of the pump and motor mounting shelf so that the top hole of the scrap trap is in line with the drain opening from the machine.
 - b. Direct the drain line from the dishwasher to the top of the trap and plumb accordingly with 2" pipe of the necessary length. Connect a 2" fitting to the back of the scrap trap and plumb to the drain line. The drain line is a gravity feed system from the dishwasher to the scrap trap and also from the scrap trap to the drain line. Scrap trap aids sluggish drains by containing machine water as it drains and letting it drain off slower.
3. Connect incoming $\frac{3}{4}$ " water line with capacity to supply 10.5 gallons per minute with a flow pressure of 20 PSI at a temperature of 140 degrees fahrenheit. This connection is just before the Y-strainer. Connect to conform with local and/or national codes (standards).
 - a. It is recommended that in areas where there is fluctuating water pressure a restrictor valve allowing 8 gallons of water per minute be installed. This will help to provide a steady fill rate. The restrictor should be located down the line from the Y-strainer.
4. Install the proper circuit breaker, wire and conduit size to conform with local and/or national codes. Refer to data plate for electrical rating.
5. Electrical connections are made to the circuit breaker located in the dispenser/control box on top of the machine. The circuit breaker is located on the side of the box with a grounding lug next to it. Three wires L1, N and a ground wire should be passed through the hole in the back of the box and pulled over to the top two terminals of the circuit breaker. Wires L1 and N are connected to the top two terminals of the circuit breaker and the ground wire connected to the grounding lug next to the circuit breaker.
6. Do not apply power until step #9.
7. Turn on water supply to machine; check for any leaks in plumbing and connections.
8. Place the open end of the red tube into a container of detergent; white, into a container of sanitizer and blue, into a container of rinse additive.
9. To energize electrically, proceed as follows:
 - a. Turn on customer's circuit breaker controlling the machine.
 - b. Check voltage at incoming terminals L1 and N. It should match data plate voltage. Voltage at L1 should be checked to ground to ensure that a high (or wild) leg is NOT connected. (Voltage exceeding 150V to ground would indicate a high leg).
 - c. If voltages are in required range, turn on circuit breaker on the side of the dispenser/control box.
10. To fill the unit with water:
 - a. Located on the right side of the control box are two rocker type momentary switches. To fill this unit initially with water, push and hold the fill switch to the top of the unit until the water reaches the overflow hole in the side of the drain stopper. Release the switch and it will return to the center position.
 - b. After the unit is full of water, check for leaks and see if the solenoid valve opens and closes as the fill switch is turned on and off.
 - c. After checking the plumbing lines for leaks, run the unit through a complete cycle to determine the proper water level. The proper level for the water is the overflow hole in the side of the drain stopper. If this level is either not reached or is exceeded, please turn to the timer section of this manual to determine the proper adjustment of the timer that has to be made.

- d. Above each peristaltic pump is a priming switch. After making sure that the feeder tubes to the pumps are in their proper containers, as marked on the pumps, press the switch and hold it until there is a discharge of the fluid into the machine. This is to be done to each pump before the initial operation of the machine. Water must be in wash-rinse tub to prevent discoloration or deterioration of the stainless tub by chemicals.
- e. The dishwasher is now ready to proceed with the washing of dishes in accordance with operating instructions in this manual.



ITEM	P/N	DESCRIPTION	ITEM	P/N	DESCRIPTION
1.		INCOMING WATER CONNECTION (3/4")	6.	0154300	PRIMING SWITCHES
2.	0012000	CUSTOMER ELECTRICAL SERVICE CONNECTION	7.	0154300	START SWITCH
3.	0046500	DETERGENT DISPENSER PUMP	8.		FILL LEVEL
4.	0046500	RINSE ADDITIVE DISPENSER PUMP	9.		DRAIN OUTLET (2" GRAVITY FEED)
5.	0046500	SANITIZING SOLUTION DISPENSER PUMP	10.	0156300	DELIME/PURGE SWITCH
			11.	0204101	WASTE ACCUMULATOR (OPTIONA

GENERAL INSTRUCTIONS

(OPERATION)

Note: Read the following instructions carefully, proper operation of your Conserver Dishwasher will ensure clean and sanitized glasses and dishes at optimum efficiency.

Dish Preparation:

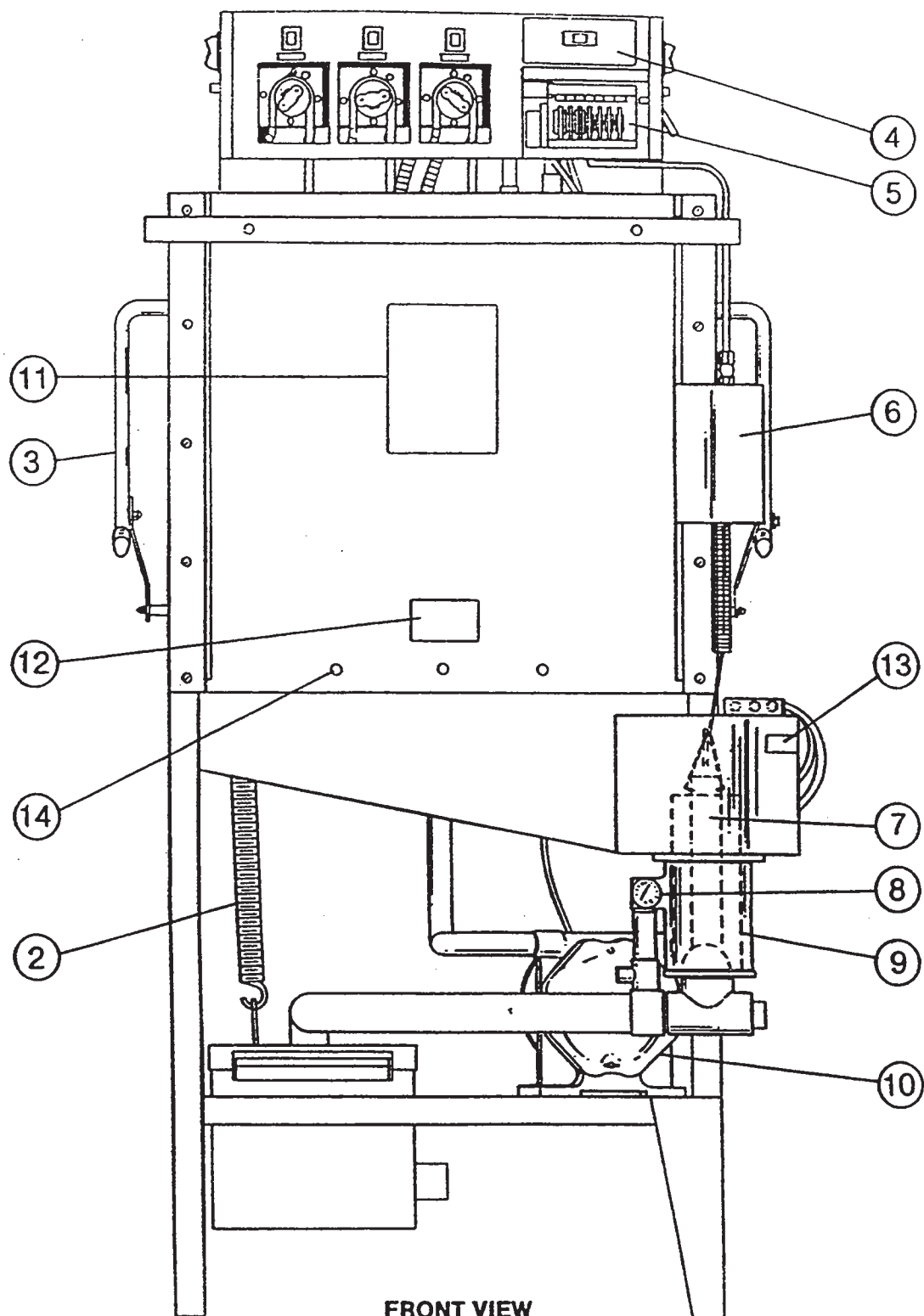
1. Scrape dishes thoroughly.
 2. Pre-wash by soaking or spraying with a pre-rinse hose.
 3. Place dishes and cups in dish rack; cups, upside down.
 4. Place glasses and silverware in combination glass silverware rack; glasses, upside down. Scatter silverware loosely on bottom. Do not put glasses on top of silverware.
- Note:** Silverware should be washed upright in a special compartment silverware rack for best results.

These silverware compartment racks are available through your dealer or service agency.

Machine Operation:

1. Insert strainer.
2. Be sure the drain stopper is in place.
3. Insert a rack of dishes and close all doors.
4. Check the levels of the soap detergent, rinse additive and sanitizing agent containers. Fill them if necessary.
5. To put the unit into operation at the beginning of the day or a meal period, make sure the circuit breaker on the left side of the dispenser/control box on top of the machine is on.
6. For the initial fill, push the fill switch on the right side of the dispenser/control box to the top. Hold the switch in this position until the water level reaches the top of the cut out for the drain opening.
7. When the unit is full of water, insert a rack of soiled dishes then push the start switch on either the right or left side to the top and count to three. This activates the time cycle and the cycle light will come on.
8. When the light goes out, open the doors and slide out the rack of clean dishes. Slide in a rack of soiled dishes and repeat steps #7 and #8.
9. At the end of the mealtime, shut off the circuit breaker on the dispenser/control box and drain the unit by pulling on the drain stopper. Clean any food debris out of the basket strainer.

Note: If the unit is not operated for extended periods of time, the water will drain out or go down in level. Be sure to check the water level before operating and if the level is down, see step #6.



ITEM	P/N	DESCRIPTION	ITEM	P/N	DESCRIPTION
1.	0143400	RINSE/FILL SOLENOID VALVE	9.	0152100	PUMP INTAKE STRAINER
2.	0009000	CANTILEVER DOOR SPRING	10.	0087000	PUMP AND MOTOR ASSEMBLY
3.	0008500	CANTILEVER	11.	0001210	OPERATIONS DECAL
4.	0001207	DELIME SWITCH DECAL	12.	0001204	DOOR CAUTION DECAL
5.	0171100	TIMER	13.	0001203	CLEAN STRAINER DECAL
6.	0054106	DRAIN SOLENOID "T" STYLE	14.	0051900	DOOR, HOLE PLUGS, BLACK RUBBI
7.	0053813	DRAIN STOPPER			
8.	0169000	WASH-RINSE WATER THERMOMETER			

GENERAL INSTRUCTIONS

(PREVENTIVE MAINTENANCE)

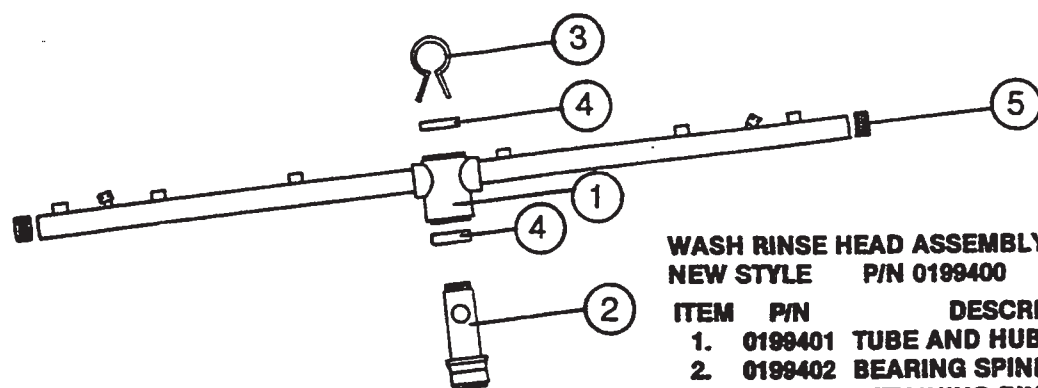
THE FOLLOWING IS TO BE PERFORMED AS NEEDED.

Note: Read the following instructions carefully. Proper maintenance of your Conserver Dishwasher will assure optimum service with a minimum of down time.

Before removing the cover to the Dispenser/Control Box, turn off the circuit breaker on the side of the box.

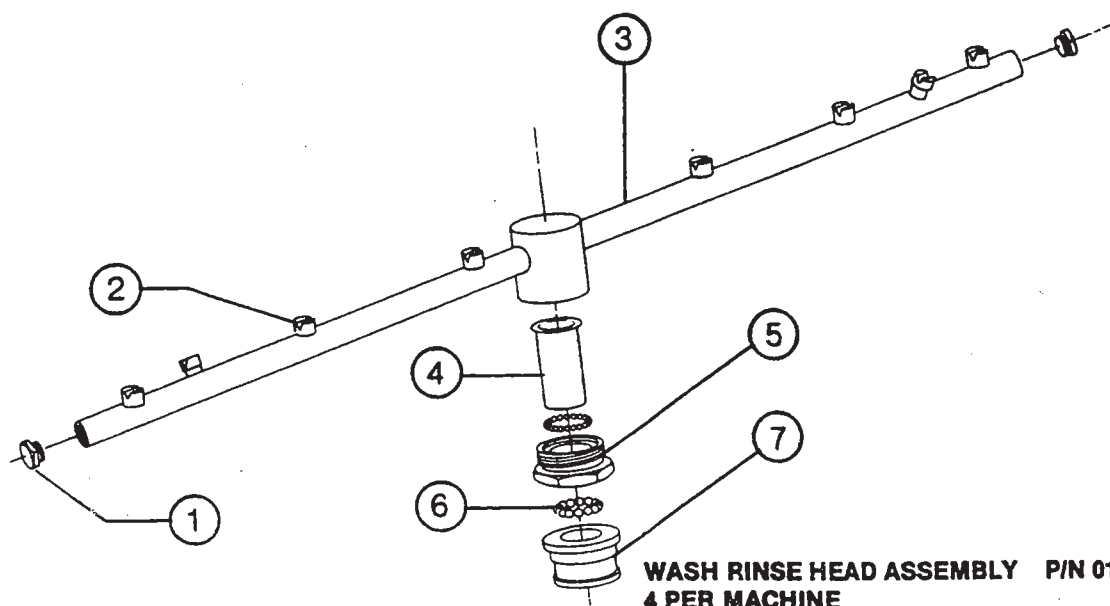
1. **Removal of Lime and Corrosion Deposits (Weekly or as needed.)**
 - a. Fill machine with wash water as would ordinarily be done for washing.
 - b. Unlock the Electrical Control Box with the key provided and locate the "Normal/Purge/Delime" switch. Push the switch to the "Purge" mode. Run the machine for 3 cycles without any dishes in it.
 - c. Push the switch to the "Delime" mode.
 - d. Open door and place one cup or less of deliming compound into water. (Be sure to follow the amount and directions given on the package or bottle of the compound used.) The compound is available from your detergent supplier.
 - e. Close door and push start switch. The machine will continuously run in the delime mode. Run the machine for 5 minutes and then turn off.
 - f. Open door and examine the interior. All lime should be removed and parts should be shiny. If not, scrub stubborn deposits with brush and repeat operation. (Protect hands with waterproof gloves.)
 - g. After the interior is clean, empty wash water by removing the drain stopper. Remove basket strainer and flush away all debris and build-up.
 - h. Push the switch to the "Purge" mode and run the machine for 3 cycles.
 - i. Physically inspect the interior of the machine. By now the interior should be clean. If not, repeat steps 4 and 5.
 - j. Push the switch back to "Normal" position. Now the machine is ready for normal operation.
2. **Clean the strainer basket to provide for the maximum amount of water return to the pump as possible. (Daily or as needed.)**
 - a. Remove basket from drain opening and brush away any debris or force it out of the strainer openings with water.
3. **Clean Y-strainer on incoming water line. (Yearly or as needed.)**
 - a. Water to machine must be turned "off" for this operation.
 - b. Remove plug and clean strainer. As water is trapped near strainer, and 120 degrees to 140 degrees fahrenheit, use care in removing plug and have container to catch water.
4. **Clean wash/rinse tubes. (Weekly or as needed.) (See Drawing Next Page)**
 - a. Turn the circuit breaker to 'off' position.
 - b. Open door and drain machine by lifting drain stopper.
 - c. When empty, replace drain stopper.
 - d. Loosen the two thumb screws opposite each other on the top and bottom assemblies.
 - e. Pull the assembly out of the base.
 - f. Remove the hub assembly by loosening the nut with a wrench.
 - g. After hub is off, remove the end plugs and either flush with clean water or a brush. (A straightened paper clip makes an excellent tool for cleaning the nozzles.)
 - h. Clean the hub by either soaking or brushing with a deliming solution. (A toothbrush makes an excellent tool.)
 - i. The bearings cannot be replaced separately, the whole hub must be replaced if it is needed.
 - j. Reassemble the wash/rinse assembly by reversing steps d, e, f, and g.
5. **Clean any deposits which may have built up on exterior moving parts. (Only as needed.)**
 - a. Remove with clean cloth. (A stainless polish or oil may be used to loosen deposits.)
 - b. Deposits around fill switch can be removed with a dry toothbrush.

6. If an external scrap trap is supplied with the unit, flush the drain line and the scrap trap.
(Weekly or as needed.)
 - a. Remove the 2" pipe nipple on the end of the fitting underneath the drain outlet.
 - b. Insert a hose into the line and flush the line out with a steady stream of water.
 - c. Remove the scrap tray from the scrap trap and empty the food debris into a disposable container.
 - d. Before reinstalling the scrap tray, flush the line from the machine to the trap, then from the trap to the drain line.
 - e. Reinstall the scrap tray and replace the lid.
7. Never allow the main pump to be operated without water in the machine.
8. Inspect the peristaltic pumps on a weekly schedule for cracks in the tubes. On the right side of the dispenser/control box there is a counter to register each time the unit completes a full cycle. Anticipate about every 30,000 cycles having to replace the tubes in the peristaltic pumps. The tubes and instructions are available from your area parts distributor listed in the back of this manual.



**WASH RINSE HEAD ASSEMBLY
NEW STYLE P/N 0199400**

ITEM	P/N	DESCRIPTION
1.	0199401	TUBE AND HUB ASSEMBLY
2.	0199402	BEARING SPINDLE
3.	0199403	RETAINING RING OR CLIP
4.	0199404	BEARINGS (2 EACH)
5.	0199501	END PLUGS



**WASH RINSE HEAD ASSEMBLY P/N 0199500
4 PER MACHINE**

ITEM	P/N	DESCRIPTION	
1.	0199501	END PLUGS (4)	
2.		VEE JETS (16)	
3.	0199503	TUBE (4)	
4.	0199504	INTERNAL SHAFT	} COMPLETE UNIT 4 EACH
5.	0199504	HEX BUSHING	
6.	0199504	BEARINGS	
7.	0199504	EXTERNAL SHAFT	

TIMER ADJUSTMENTS

The timer is a self-contained (frame-mounted) timer of the repeating cycle type. It is mounted in the control box on the top of the machine to control the automatic functions of the machine. The timer motor operates on 110 VAC, 60 cycles, taking 90 seconds to complete one full revolution. There are six micro switches which are controlled by rotating cams driven by the timer motor. Two of the cams are fixed and cannot be adjusted. The remaining four cams are adjustable and can be adjusted to either lengthen or shorten the desired operation.

Remove the power to the machine when making all timer adjustments.

Included and taped in each control panel is a spanner wrench (as shown in the drawing). This wrench is needed to adjust the cams on the timer. The cams are preset at the factory but may have to be readjusted for different conditions of the country and for the different brands of detergent, rinse additive and sanitizing solutions. On both sides of the four adjustable cams, there are holes into which the spanner wrench is placed to apply leverage to make the desired change. The left side of the cam will always start an operation and the right side will end it. The cam on the right side is the one that will be adjusted more often since this one determines the length of the operation.

When making adjustments to the timer cams be sure that the first cam next to the timer motor is in its stop position in the notch. Place one hand over the timer motor with your thumb lodged next to or on the first cam so that it will not move when the other cams are being adjusted. To make the adjustment, place the wrench in the holes on the right side of the cam. If a longer operating time is desired, increase the gap between the left and right side of the cam. If a shorter operating time is desired, decrease the gap between the left and right side of the cam. At the extreme end from the timer motor, there is a cam marked in five-degree increments. Every four degrees equals one second of the timer's revolution.

Function of each micro switch starting from the timer motor and going left to right:

Timer Motor Micro Switch: controlled by a fixed cam that controls the total length of the cycle. It is activated by engaging the fill/start switch in the start position.

Detergent Micro Switch: controlled by an adjustable cam. It operates the peristaltic pump that dispenses the detergent. By adjusting the right side of the cam, you can either increase or decrease your amount of detergents.

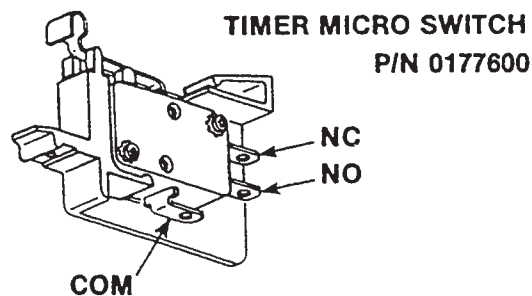
Drain Solenoid Micro Switch: controlled by a fixed cam. It opens the solenoid valve during the cycle that drains the wash water out of the unit.

Fresh Water Solenoid Valve Micro Switch: controlled by adjustable cam. It is important that the unit have two-and-a-half gallons of water in it during the wash and rinse cycles. The proper level indicator is the height of the cut-out leading into the drain strainer and stopper. By adjusting the right side of the cam, you can either increase or decrease your water supply to meet this required level. Fill water is turned on before drain cycle ends to insure machine is flushed before filling.

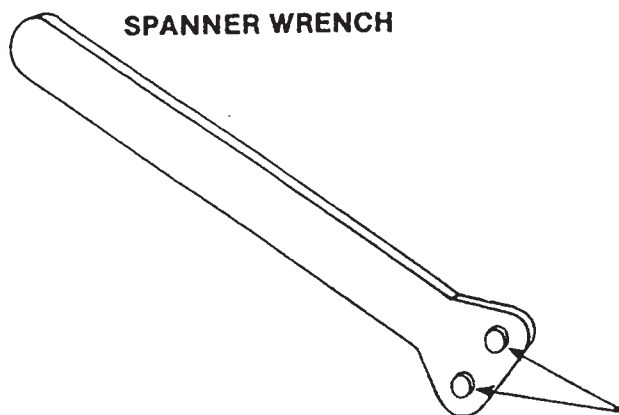
Rinse Agent Micro Switch: controlled by an adjustable cam. It operates the peristaltic pump that dispenses the rinse agent. By adjusting the right side of the cam, you can either increase or decrease your amount of rinse additive. It should activate during the fill cycle.

Sanitizing Agent Micro Switch: controlled by an adjustable cam. It operates the peristaltic pump that dispenses the sanitizer solution. By adjusting the right side of the cam, you can either increase or decrease your amount of sanitizer solution. It should activate during the fill cycle.

When the timer is preset at the factory, it is set to dispense 15 milliliters of detergent, 11 milliliters of rinse additive and 9.5 milliliters (50 parts per million) sanitizing agent based on an 8.4% solution of Sodium Hypochlorite.

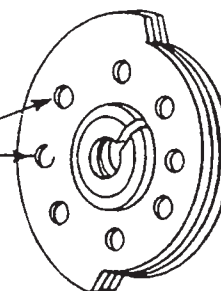


SPANNER WRENCH



SIDE VIEW OF CAM

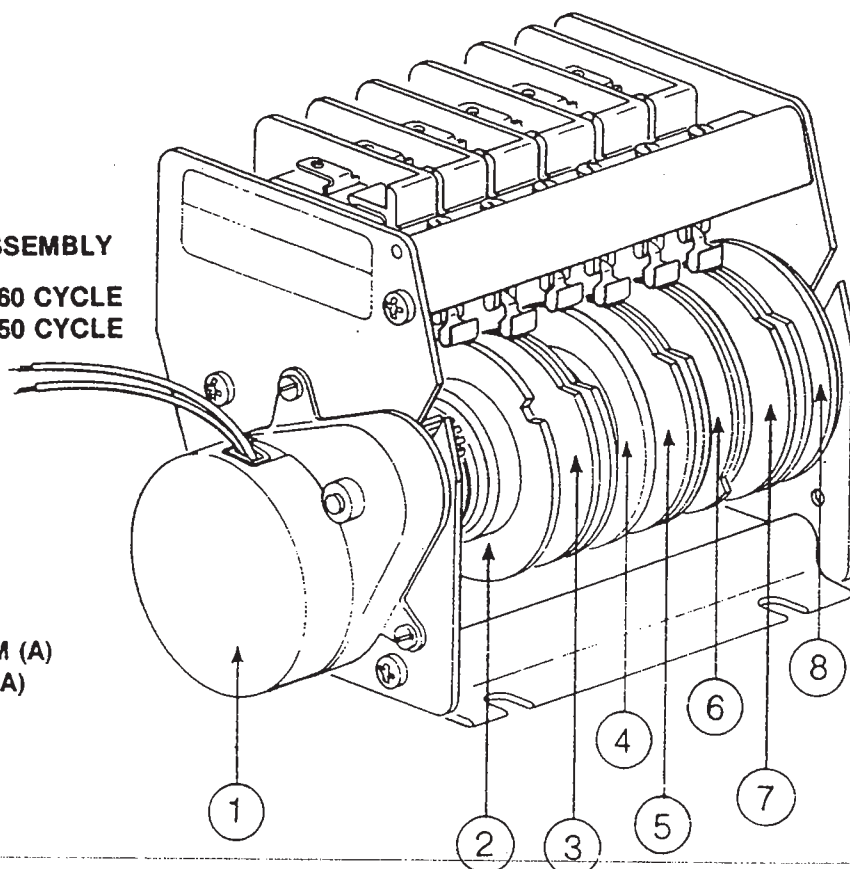
ADJUSTING HOLES



ADJUSTING PINS

TIMER ASSEMBLY
P/N 0171100, 60 CYCLE
P/N 0173200, 50 CYCLE

1. TIMER MOTOR
2. TIMER MOTOR CAM (F)
3. DETERGENT CAM (A)
4. DRAIN SOLENOID CAM (F)
5. FRESH WATER SOLENOID CAM (A)
6. RINSE ADDITIVE AGENT CAM (A)
7. SANITIZING AGENT CAM (A)
8. DEGREE CAM (F)



F—FIXED CAM
A—ADJUSTABLE CAM

FUNCTION OF SWITCHES, CIRCUIT BREAKER, INDICATOR LIGHT AND CYCLE COUNTER

Circuit Breaker — The circuit breaker is rated at 15 amps and is utilized for the customer's incoming electrical service connection and as a protection device for the unit. (P/N 120)

Fill/Start Switch, Straight through Model (before S/N 1163) — The Fill/Start switch is a three position spring loaded momentary toggle switch which is utilized for two basic functions of the machine. When the switch is held to the forward position it allows water to enter the machine to the desired level. When the switch is held to the back for a count of three the automatic timer is started. The center position is off. (P/N 1626)

Fill Switch, Straight through Model (after S/N 1163) — The Fill switch is a spring loaded momentary rocker switch and must be held in the up position until the water has reached the desired level. (P/N 1543)

Start Switch, Straight through Model (after S/N 1163) — The Start switch is a spring loaded momentary rocker switch and must be held in the up position for a count of three to start the automatic timer. (P/N 1543)

Fill/Start Switch, Corner Model (after S/N 1163) — The Fill/Start switch is a spring loaded three position momentary rocker switch with the center position being off. To fill the machine push the switch up and hold until the water reaches the proper level. To start the unit push the switch down and hold for a count of three. (P/N 1627)

Drain Switch, Corner Models (all inside sump) — The drain switch is a spring loaded momentary rocker switch utilized to activate the drain solenoid when it is necessary to drain the machine at times other than during the normal operation of washing and rinsing. (P/N 1543)

Primer Switches — The primer switches are a spring loaded momentary rocker switch located over each peristaltic dispensing pump. The switches are utilized to operate the pumps when it is necessary to refill the intake tubes or pumps after they have been emptied. The pump is activated by pushing up on the switch and holding it for the desired length of time. (P/N 1543)

Cycle or Machine Light — This light comes on only when the automatic cycle is in progress and extinguishes when the cycle is complete. (P/N 835)

Cycle Counter — The counter totals each single cycle that the unit goes through and is activated by the rinse additive micro switch on the timer. This counter can not be reset. (P/N 340)

Power On Light — This light is lit all the time the circuit breaker is on. (P/N 835)

Delime/Purge Switch — The Delime/Purge Switch is a three position switch. It allows normal operation, a purge operation and a delime operation.

REPLACEMENT of SWITCH in CONTROL PANEL

There is one type of manually operated switch utilized on the Conserva dishwasher. It is the rocker switch.

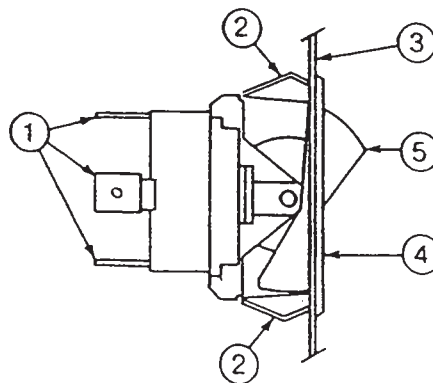
Before working on the machine, it is important that the power be turned off at the customer's circuit breaker to prevent the possibility of electrical shock, trip the breaker to the "OFF" position. Then turn the machine circuit breaker "OFF" located on the side of the control box.

The Rocker switch is mounted in a rectangular hole held in position by a bracket. These switches are designed to be released from the inside and pushed outward. The spring sides must be depressed to release the switch and bracket from the hole. To remove the bracket from the switch wedge a screwdriver in between them then lift up and move off.

If the switch is found to be defective mount a new one into the bracket and insert it into the hole in the control box. Make sure that the tab on the switch is in the proper notch on the bracket for easy operation of the switch. Replace the wires from the used switch terminal by terminal on to the new switch.

Power can now be applied to the dishwasher and run through cycles checking all operations.

ROCKER SWITCH



1. CONNECTION TERMINALS
2. BRACKET SPRING SIDES
3. PANEL PLATE
4. BRACKET FRONT
5. ROCKER BUTTON

PERISTALTIC PUMP SANITIZING DISPENSING SYSTEM

The peristaltic pumps are mounted in the Control/Dispenser Box which is attached to the top of the unit. The pumps receive their electrical signals from two sources.

The first source is the primer switch which is used to prime the pump when it is first put into operation and then every time the agent is changed and/or the tubes are clear of any solution.

The second source is the timer which activates the pumps during the cycle at the proper time to dispense the correct agent when needed.

If control box is locked and access to prime switches is not available just run dishwasher through several cycles to move liquid from storage bottles to pumps.

Checkout of Sanitizing Injector

The pump can be deemed operational if the following items are observed:

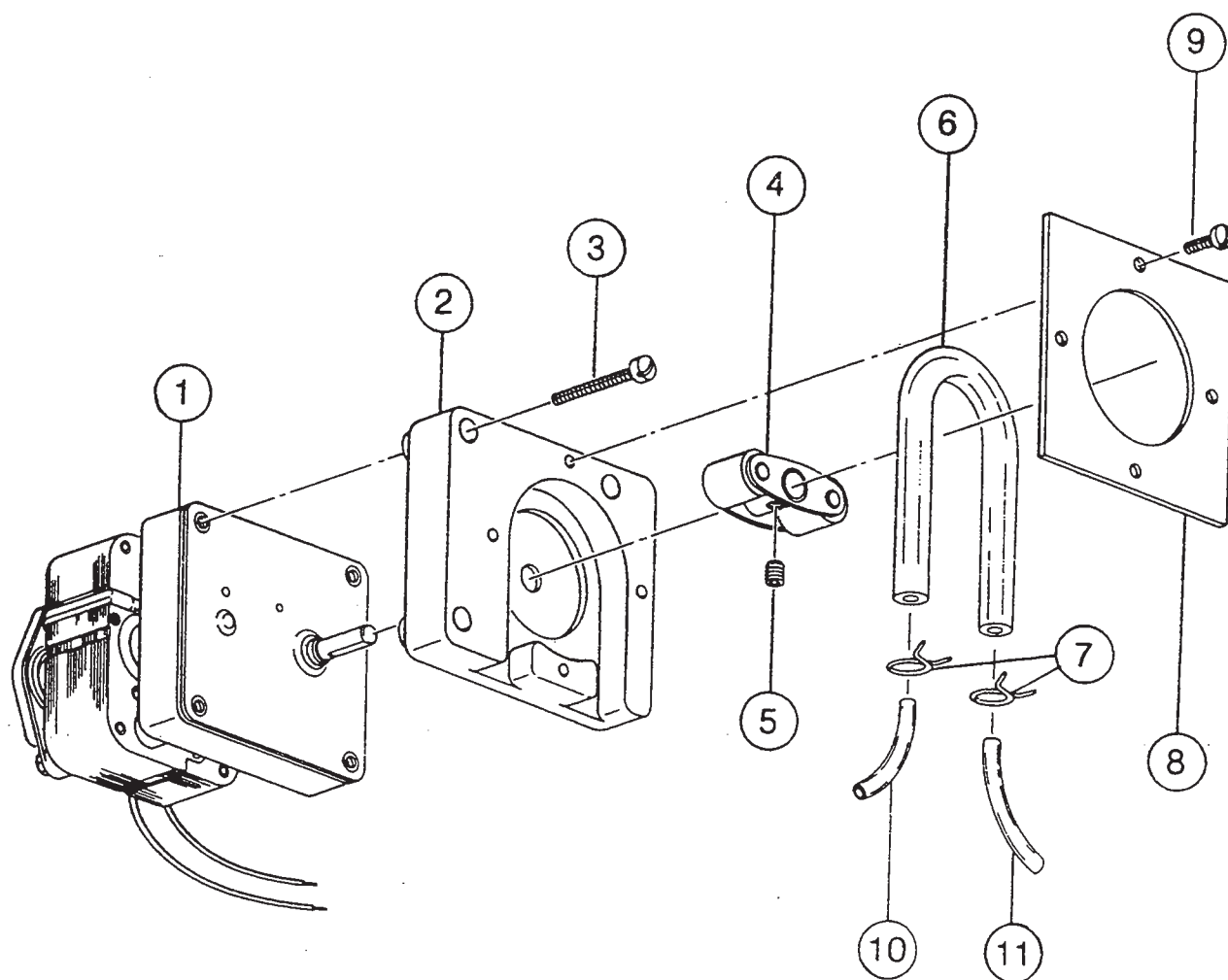
1. If the cam roller assembly rotates during each cycle.
2. If the solution is observed passing through the tube.

Note: Both of these operations must be observed to determine if the sanitizing agent is being dispensed.

If it is determined that the unit is not operating correctly, the following procedures will aid in correcting the problem:

1. Make certain that the tube is in the bottle of solution.
2. Make certain that there are no cracks in the tubing and particularly in the pump hose.
3. Check all wire connections on the pump, the timer cam, and the primer switch.
4. Check to see that there is no debris in the tubes.
5. Make sure that the tubing is inserted into the pump hose so that air is not drawn into the system.

SANITIZING AGENT INJECTOR



P/N 465 COMPLETE PUMP ASSEMBLY, 60 CYCLE

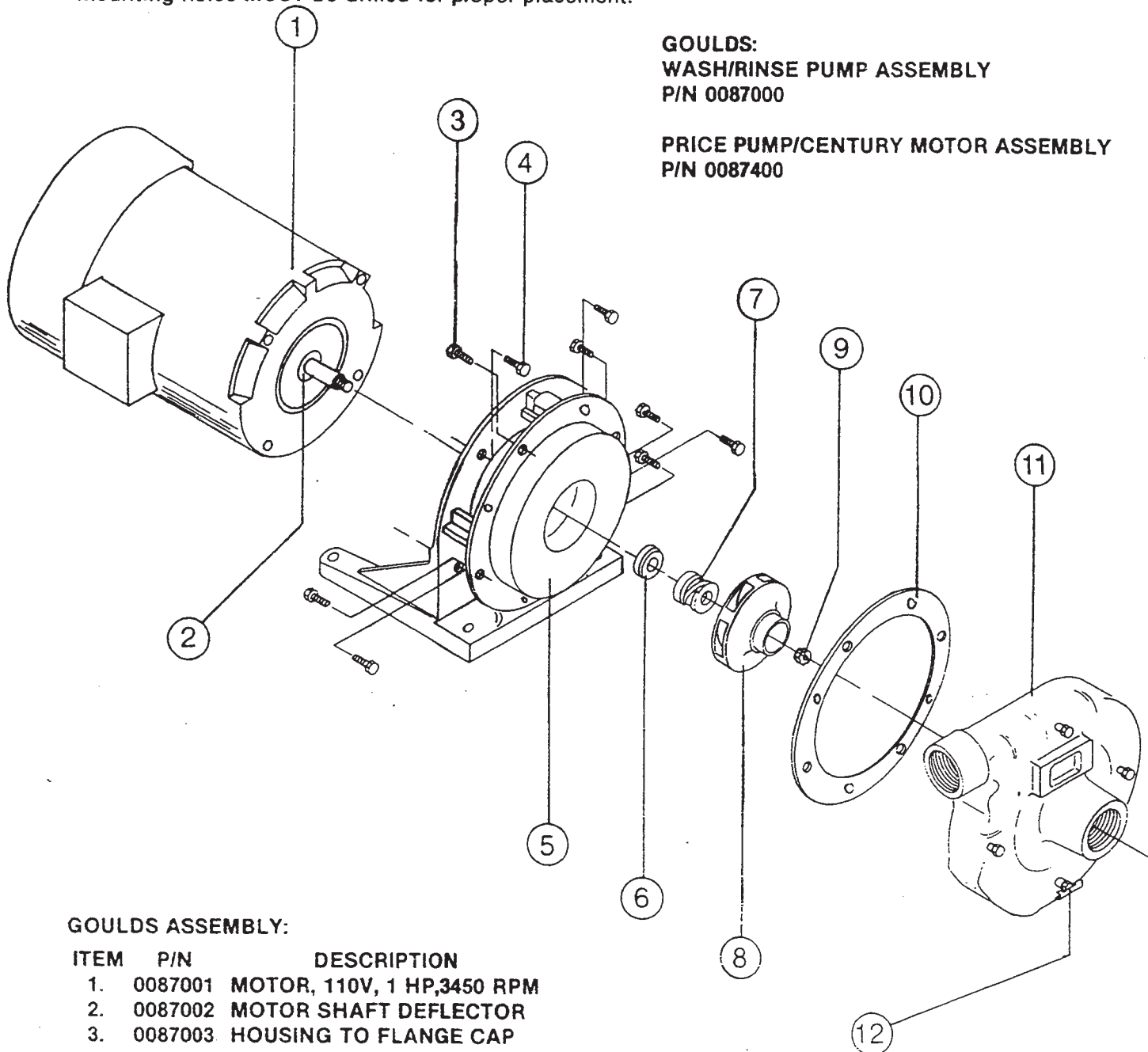
ITEM	P/N	DESCRIPTION
1.	0046501	PUMP MOTOR, 60 CYCLE
2.	0046502	PUMP HOUSING
3.	0046503	HOUSING MOUNTING BOLTS (3) 10/32 FILLSTER HEAD
4.	0046504	CAM ROLLER ASSEMBLY
5.	0046505	CAM ROLLER SET SCREW
6.	0046506	PUMP HOSE
7.	0046507	HOSE CLAMPS

ITEM	P/N	DESCRIPTION
8.	0046508	FACE PLATE
9.	0046509	PLATE MOUNTING SCREWS (4) 8/32
10.	0046510	INTAKE OR SUCTION HOSE
11.	0046510	OUTPUT OR INJECTOR HOSE

It is important to obtain the name of the correct type of pump/motor assembly before ordering these replacement parts, as needed. Both assemblies can be identified by the data plates, which will indicate either the GOULDS or CENTURY Motor.

PLEASE REFER TO THE ILLUSTRATION WITH PARTS BREAKDOWN LIST OF BOTH ASSEMBLIES

Note: The Goulds Pump/Motor Assembly may be used in place of the Price Pump/Century Motor. However, new mounting holes **MUST** be drilled for proper placement.



GOULDS:
WASH/RINSE PUMP ASSEMBLY
P/N 0087000

PRICE PUMP/CENTURY MOTOR ASSEMBLY
P/N 0087400

GOULDS ASSEMBLY:

ITEM	P/N	DESCRIPTION
1.	0087001	MOTOR, 110V, 1 HP, 3450 RPM
2.	0087002	MOTOR SHAFT DEFLECTOR
3.	0087003	HOUSING TO FLANGE CAP SCREW
4.	0087004	HOUSING TO MOTOR CAP SCREW
5.	0087005	HOUSING
6.	0087006	CERAMIC FACE FOR SEAL
7.	0087006	MECHANICAL SEAL
8.	0087008	IMPELLER
9.	0087009	IMPELLER NUT
10.	0087010	FLANGE GASKET
11.	0087911	FLANGE
12.	0087912	FLANGE PETCOCK

PRICE PUMP/CENTURY MOTOR ASSEMBLY:

- 1. 0087401 - Motor - Century
- 6. & 7. 0087403 - Mech. Seal & Ceramic Face
- 8. 0087404 - Impeller
- 10. 0087402 - Gasket

REPLACING SEAL and CERAMIC on WASH/RINSE PUMP ASSEMBLY

Function:

The pump is part of the total motor-pump system and utilizes one shaft seal and ceramic to prevent the pump from leaking around the impeller and shaft. One gasket is used to prevent leakage between the pump housing and the pump flange.

Replacement of Seal and/or Ceramic

1. Remove the power source to the machine by turning the circuit breaker to its "OFF" position on the side of the control/dispenser box.
2. Drain the system by raising the plunger and leaving it at an angle to allow all of the water to drain out of the unit. Open the petcock on the pump and drain the water from the pump into a catch basin.
3. Remove the four bolts that are holding the pump unit to the base of the machine.
4. Remove the eight bolts that hold the pump housing to the pump flange. This will eliminate having to remove the plumbing going into and coming out of the pump flange.
5. Pull the motor and the remaining pump parts away from the pump flange and plumbing. If unable to work on the pump at its present location, disconnect the wires and move it to a stable location.
6. To remove the impeller jam nut insert a screwdriver into one of the passages of the impeller and back off the jam nut with a $\frac{3}{8}$ " socket and wrench.
7. Remove the impeller by inserting a screwdriver in the end of the motor shaft to prevent it from turning and unscrew the impeller in a counter clockwise direction from the shaft.
8. To remove the mechanical seal from the shaft, place two screwdrivers opposite each other with their flat edges under the seal with the shank of the screwdrivers against the housing. Push on the screwdrivers with equal force and this will pry the seal off of the shaft.
9. After removing the four bolts that hold the housing to the motor take off the housing and place it on a flat surface. Push out the ceramic seat and rubber cup being careful not to touch the housing.
10. Clean thoroughly the flange and housing gaskets of any scale or dirt build up. Clean the counterbore where the ceramic seat is located and the shoulder of the motor shaft that fits next to the impeller.
11. To enable the ceramic face and rubber cap to be installed in the housing squarely and evenly the counterbore in the housing and the rubber cup should be coated with a thin film of oil. Press the ceramic face and rubber cup into the counterbore of the housing using your thumbs. Apply even pressure all the way around to insure a good tight fit, but be carefull not to damage the top of the ceramic face.
12. Replace the housing on the motor being very careful not to damage or move the ceramic when passing the shaft through the ceramic. Tighten the four bolts tightly.
13. Apply a thin film of oil to the new mechanical seal and press it into place by placing a piece of tubing over the shaft and pushing it toward the ceramic face. The face of the seal has to fit snugly against the surface of the ceramic face. Be very careful not to allow the ceramic face to come out of the rubber cup while installing the seal.
14. Reassemble the pump and motor by reversing the procedure in steps 1-9. Close petcock on pump.

Caution: Do not operate unit until pump is filled with water.

SERVICE INSTRUCTIONS

(INCOMING WATER SOLENOID VALVE)

SOLENOID VALVE
P/N 0143400, 115V
2 PER UNIT
P/N 0143000, 220V

To Take The Valve Apart:

Disassembly—These valves may be taken apart by unscrewing the bonnet and the enclosing tube assembly from the valve body assembly. See Fig. 3. After unscrewing, carefully lift off the bonnet and enclosing tube assembly. Don't drop the plunger. The "O" ring seal and diaphragm cartridge can now be lifted out.

Be careful not to damage the machined faces while the valve is apart.

To Reassemble—Place the diaphragm cartridge in the body with the pilot port extension UP. Hold the plunger with the synthetic seat against the pilot port. Make sure the "O" ring is in place, then lower the bonnet and enclosing tube assembly over the plunger. Screw bonnet assembly snugly down on the body assembly.

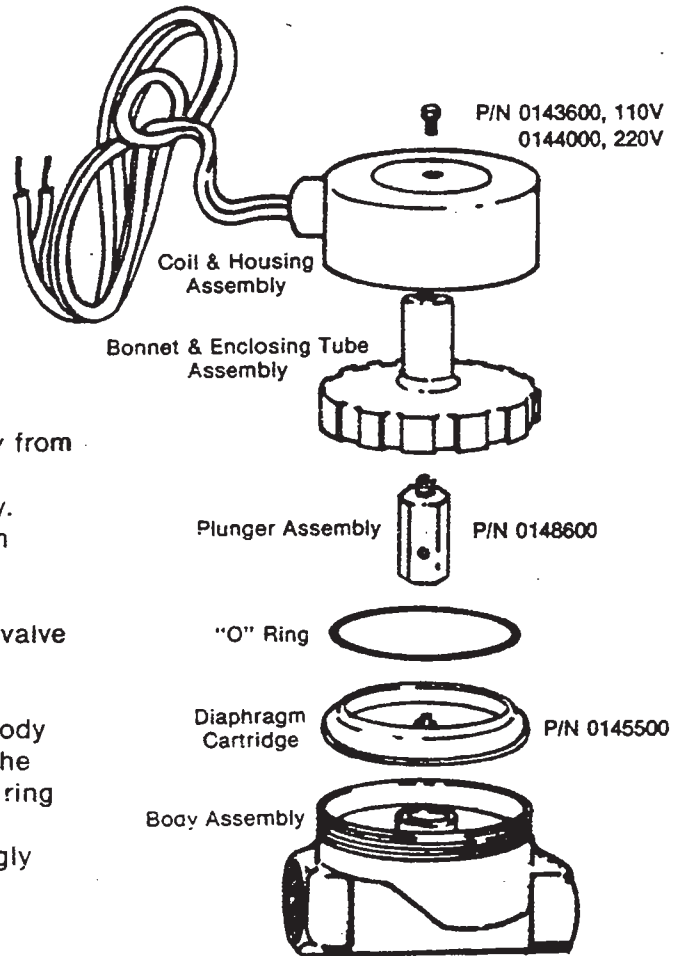
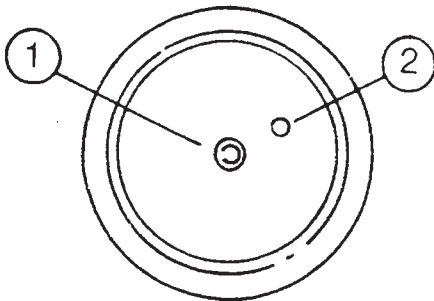


FIG. 3

DIAPHRAGM CARTRIDGE



Possible Problems:

Pilot Port extension #1 clogged.
Hole #2 clogged.

Remedy:

Pass heated straight pin through hole #2
or clean hole #1.

APPLYING NYLATRON STRIP to CONSERVER DOOR

It's important when removing the old door guides that the surface be cleaned thoroughly. This can be done with a solvent that will dissolve the remaining glue and/or the use of a fine sandpaper to scratch the surface where the door guide would make contact with the stainless steel door.

After this is accomplished and you are quite convinced that the surface is cleaned of all oil, glue, dirt, detergent, etc., then the door guide should be placed on a flat surface and a bed of a silicone adhesive or any good non-hardening glue should be laid on the inside of the door guide's surface (top to bottom, making sure that none of the exposed surface to the outside has any glue on it).

Take the door guide and snap it over the door's edge as described in the attached sketch. Let this door set for at least one hour before use so that the glue or adhesive has a chance to set somewhat.

If these instructions are followed, the door guides should adhere to the door.

Fig. 1 - PUT A STREAM OF SILASTIC OR NON-HARDENING ADHESIVE IN INSIDE CORNER OF STRIP.

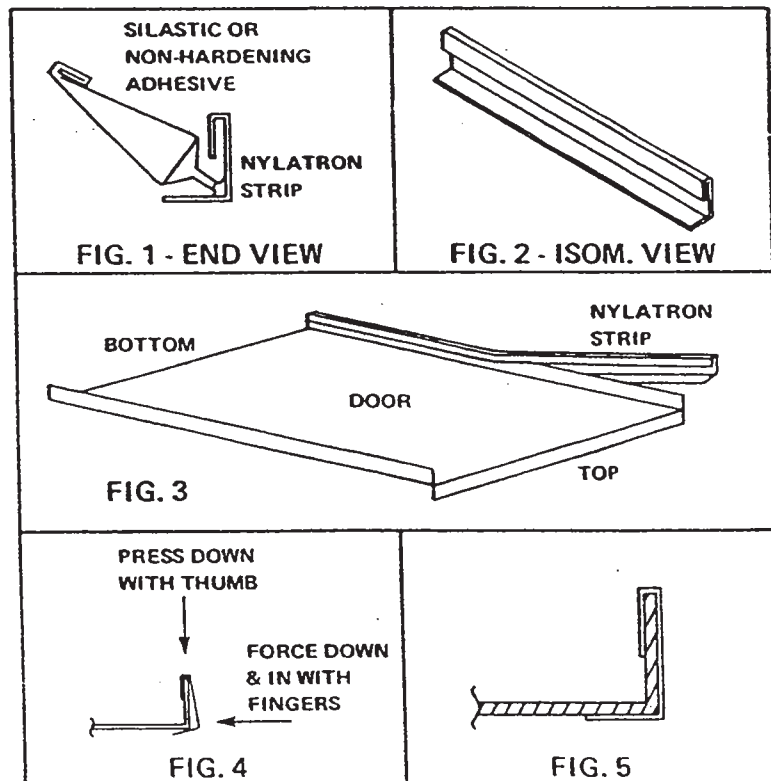
Fig. 2 - SIDE VIEW OF NYLATRON STRIP.

Fig. 3 - SNAP STRIP ON DOOR LIP.

NOTE: DO NOT SLIDE STRIP FROM END ALWAYS SNAP ON.

Fig. 4 - PRESS DOWN WITH THUMB AND INWARD WITH FINGERS.

Fig. 5 - FINISHED APPLICATION - END VIEW.



INSTRUCTIONS for ADJUSTING TENSION of CANTILEVER

Problem: Doors raise hard, but lower easily.

Solution:

1. Back off (loosen) upper adjusting nuts (F) on both eyebolts (E) about two or three complete turns.
2. Tighten lower adjusting nuts (G) on both eyebolts (E) a complete turn.
3. Check door for easy operation. Adjust further, if necessary.
4. When adjustment is completed, tighten upper adjusting nuts (F) down against angle to lock in position. Check both eyebolts.

Problem: Doors raise easily, but lower hard.

Solution:

1. Back off lower adjusting nuts (G) carefully, making sure there is still some thread on eyebolt available (both eyebolts).
2. Check door for easy operation. Adjust further, if necessary.
3. When adjustment is complete, tighten upper adjusting nuts (F) down against angle to lock in position. Check both eyebolts.

Problem: Doors sticking, or are hard to move up and down.

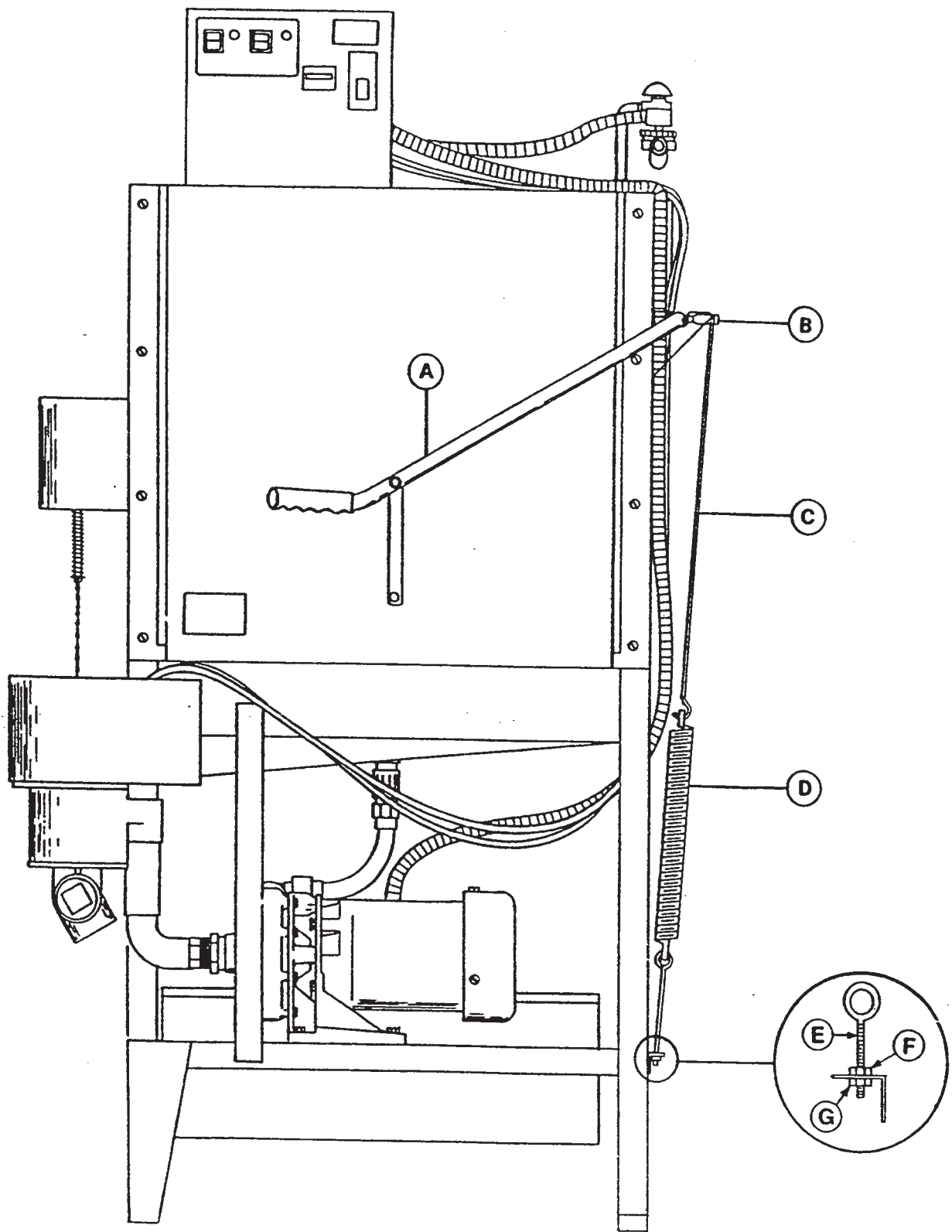
Solution:

1. Raise doors.
2. Clean inside door channels on machine with a good cleaning compound. It may be necessary to remove doors to completely clean channel. If so, remove only one door at a time. Make sure cantilever has stop to prevent pulling other door up and out of channel. If it does not have stop, secure cantilever arm to machine with doors in the closed position.
3. Build-up should be completely removed so it may be necessary to use an abrasive pad (non-metallic) to clean.
4. While you have the door out of channel, make sure it is not dented or crooked. If channel is crooked or dented, use 1/2" wide block to spread to proper opening.
5. Clean nylatron runners on the doors or replace nylatron, if excessively worn. See instructions on door runners.
6. Check door channels on machine for evenness and burrs.
7. After replacing doors, check for proper operation by raising and lowering with cantilever.

Problem: One side of door higher than other and does not close completely.

Solution:

1. Straighten cantilever arm.
2. This can sometimes be accomplished while arm is on machine by forcing down on the arm connected to the high door while the other side of the cantilever is pulled up.
3. If step two cannot be accomplished on machine, cantilever will have to be removed and straightened.

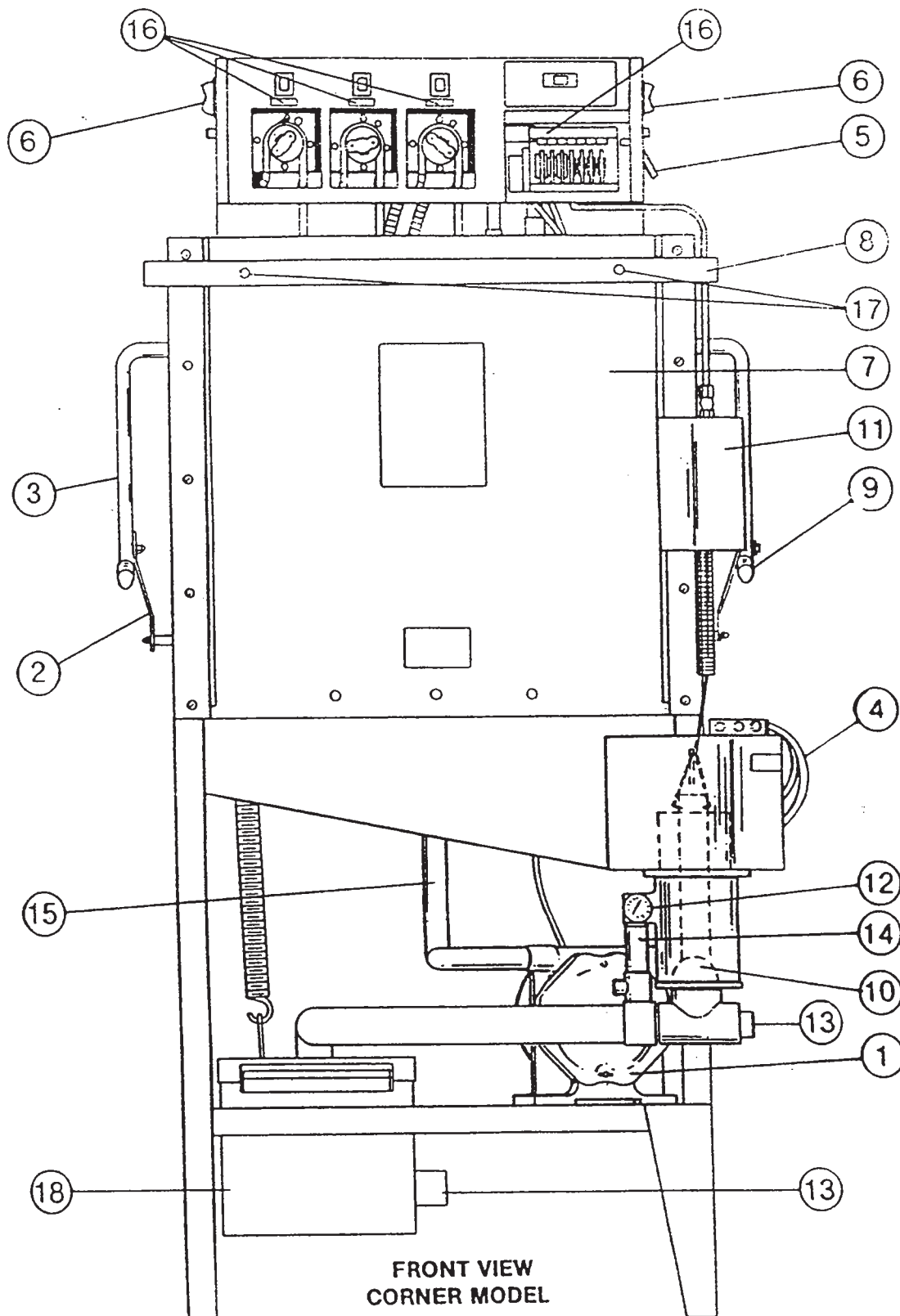


TRUBLE SHOOTING GUIDE

PROBLEM	CAUSE	SOLUTION
Nothing on machine operates.	<ol style="list-style-type: none"> No voltage to dishwasher. <ol style="list-style-type: none"> Customer's fuse blown or circuit breaker tripped. Machine circuit breaker tripped or turned off. Voltage to machine low or circuit to machine broken. 	<ol style="list-style-type: none"> <ol style="list-style-type: none"> Replace or reset. Turn on or reset. Contact your electrician and/or power company for repair.
Will not fill with electrical power applied even though other components work.	<ol style="list-style-type: none"> Water hand valve off. Fill switch faulty or loose wire connection. Solenoid valve does not operate. 	<ol style="list-style-type: none"> Turn hand valve on. Replace switch or wire terminal. Contact your service agent, electrician or power company for repair.
Water runs continuously with power on.	<ol style="list-style-type: none"> Fill switch sluggish or faulty. Solenoid valve dirty or faulty. 	<ol style="list-style-type: none"> Replace. Contact your service agent, plumber or local repair man.
Water runs with no electrical power applied to solenoid. (Master switch off.)	<ol style="list-style-type: none"> Water pressure excessive. 	<ol style="list-style-type: none"> Check, using pressure gauge during the flow period (solenoid valve open), should read 20 PSI; if in excess, installation of a Pressure Reducer can reduce pressure.
Vacuum breaker leaks.	<ol style="list-style-type: none"> Limed up. Faulty. 	<ol style="list-style-type: none"> Disassemble: <ol style="list-style-type: none"> Remove top using flat jaw wrench or channel locks. Remove poppet. Clean poppet and V.B. top and body Replace parts removed. Replace needed parts or whole V.B.
Wash arms spray water, but do not rotate.	<ol style="list-style-type: none"> Race ways, where ball bearings rotate, rough or full of food particles. 	<ol style="list-style-type: none"> See instructions for preventative maintenance.
Wash water only sprays up and out of tubes a couple of inches.	<ol style="list-style-type: none"> Pump drain strainer clogged. Pump impeller worn or broken (only after many years of use). Obstruction in pump chute or wash manifold. Wash arms clogged. 	<ol style="list-style-type: none"> Remove pump drain strainer and clean thoroughly. Contact your service agent. Contact your service agent. Clean arm.
Wash motor does not operate. Indicator light does not glow at any time.	<ol style="list-style-type: none"> Faulty. Lights faulty or poor connection. 	<ol style="list-style-type: none"> Contact your service agent. Replace or correct connection.

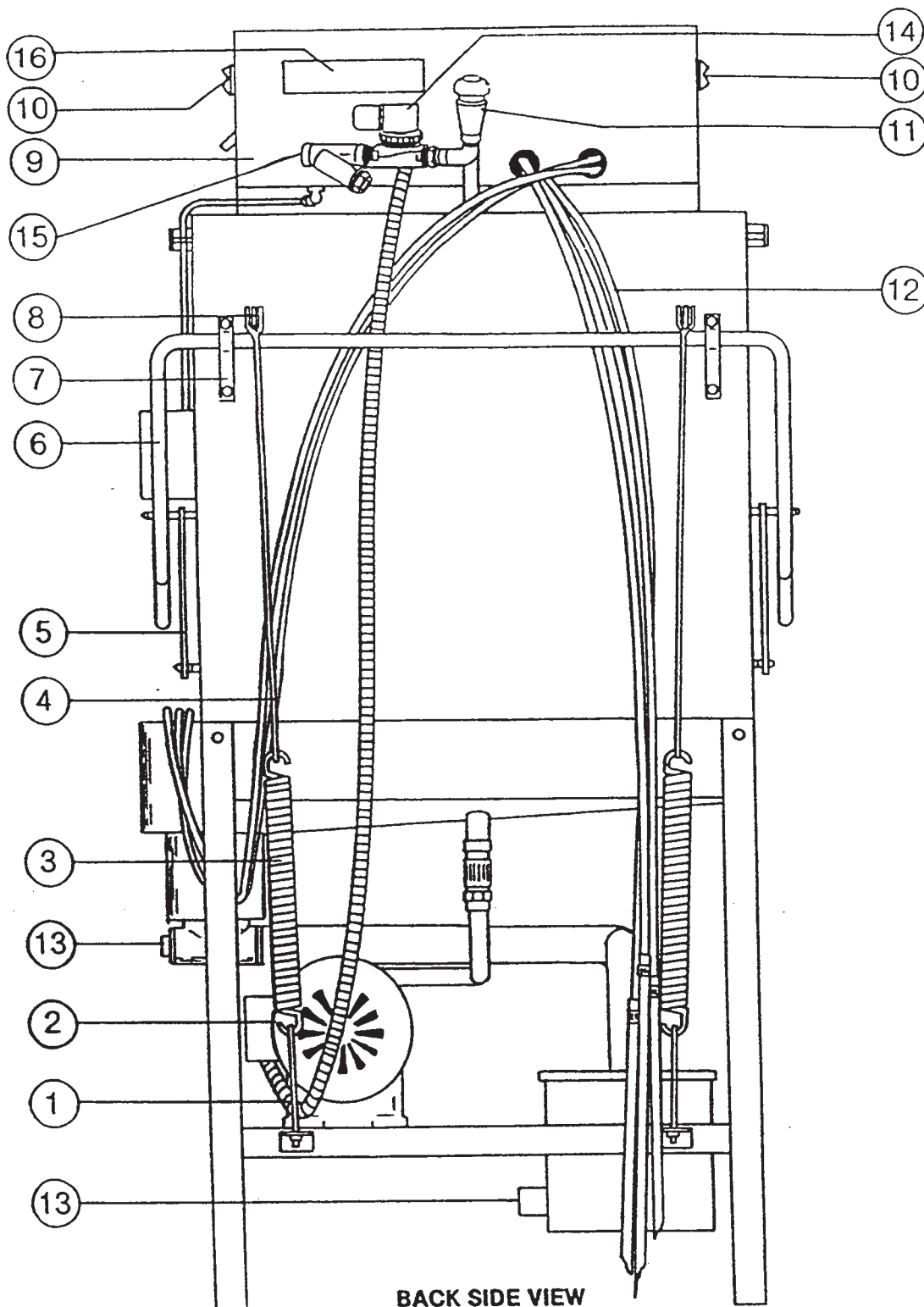
TROUBLE SHOOTING GUIDE

PROBLEM	CAUSE	SOLUTION
None of the automatic functions work (wash, rinse)	<ol style="list-style-type: none"> 1. Start switch faulty. 2. Wire connections poor. 3. Time rinse or wash micro switch faulty. 	<ol style="list-style-type: none"> 1. Check both start switches. Replace if necessary. See instructions page concerning replacement of switches in control panel. 2. Correct connection. 3. Contact your service agent.
Level of agents in bottle does not change.	<ol style="list-style-type: none"> 1. Defective agent pump (peristaltic) 2. Suction hose (intake tube) out of supple bottle. 3. Tubes in peristaltic pumps worn. 	<ol style="list-style-type: none"> 1. Replace. 2. Return to bottle. 3. Replace tubes.
Machine will not drain.	<ol style="list-style-type: none"> 1. Timer micro switch defective. 2. Drain solenoid defective. 3. Chain to stopper broken. 4. Debris clogged around stopper. 	<ol style="list-style-type: none"> 1. Replace 2. Replace or contact local service agent. 3. Repair with wire and/or replace. 4. Clean out.



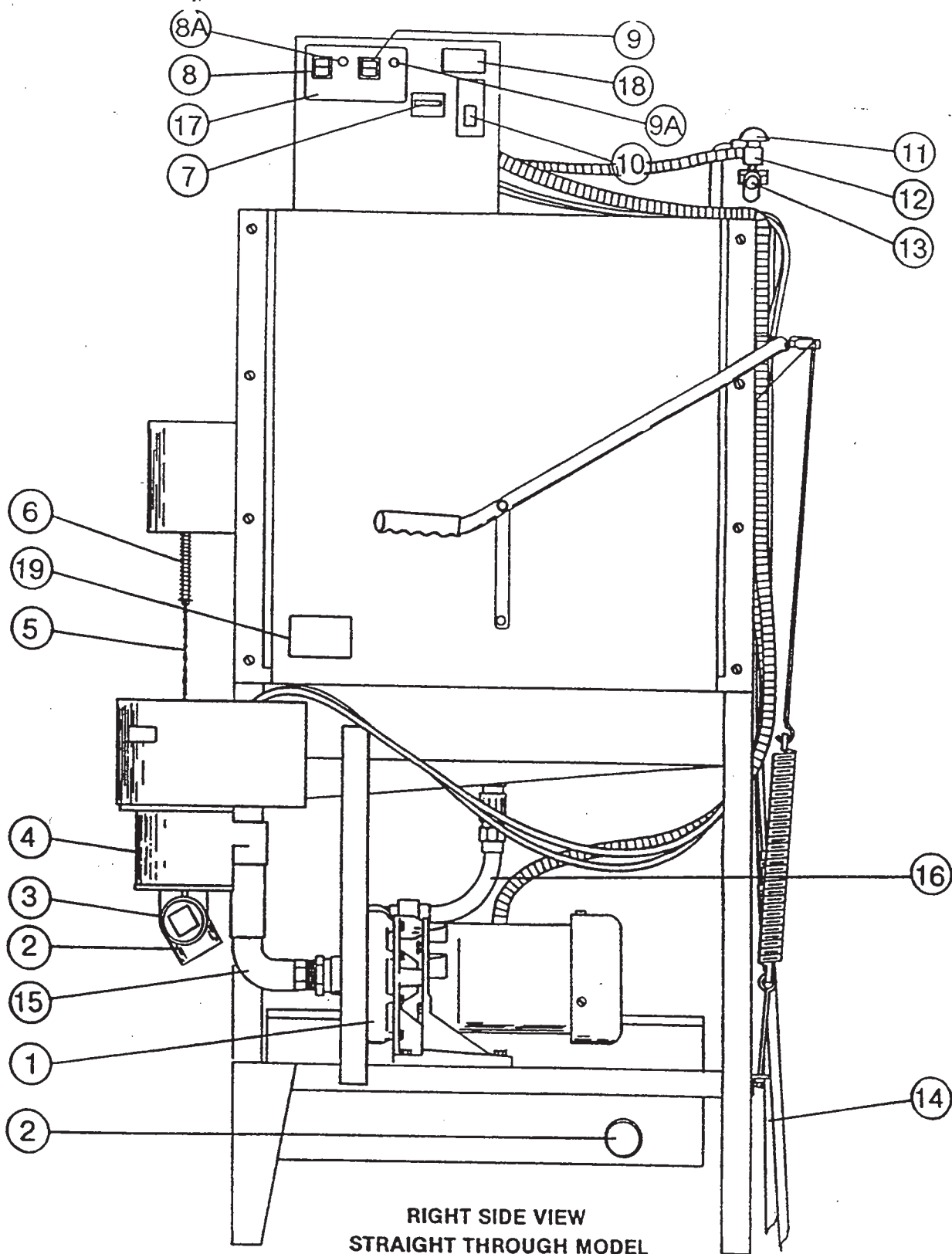
FRONT VIEW
CORNER MODEL

ITEM	P/N	DESCRIPTION	ITEM	P/N	DESCRIPTION
1.	0087000	PUMP & MOTOR ASSEMBLY	10.	0053813	STOPPER TUBE AND BALL
2.	0011501	CANTILEVER DOOR COUPLER	11.	0054120	DRAIN SOLENOID COVER
3.	0008503	CANTILEVER ARM W/YOKES	12.	0169000	THERMOMETER
4.	0046514	DISPENSER, DROP TUBE	13.		CUSTOMER DRAIN CONNECTION 2"
5.	0012000	CIRCUIT BREAKER/CUSTOMER ELECTRICAL SERVICE CONNECTION	14.	0087301	PLUMBING FROM SUMP TO PUMP N/S
6.	0154300	START SWITCH	15.	0087302	PLUMBING FROM PUMP TO MANIFOLD
7.	0047501	CORNER FRONT DOOR	16.	0001210	TIMER DECAL AND DET, SAN RIN DECALS
8.	0049900	CORNER DOOR WRAPAROUND CONNECTOR	17.	0048901	DOOR WRAPAROUND SPACER W/HDW FOR FRONT
9.	0008502	CANTILEVER ARM, HANDLE	18.	0204101	WASTE ACCUMULATOR (OPTIONAL)



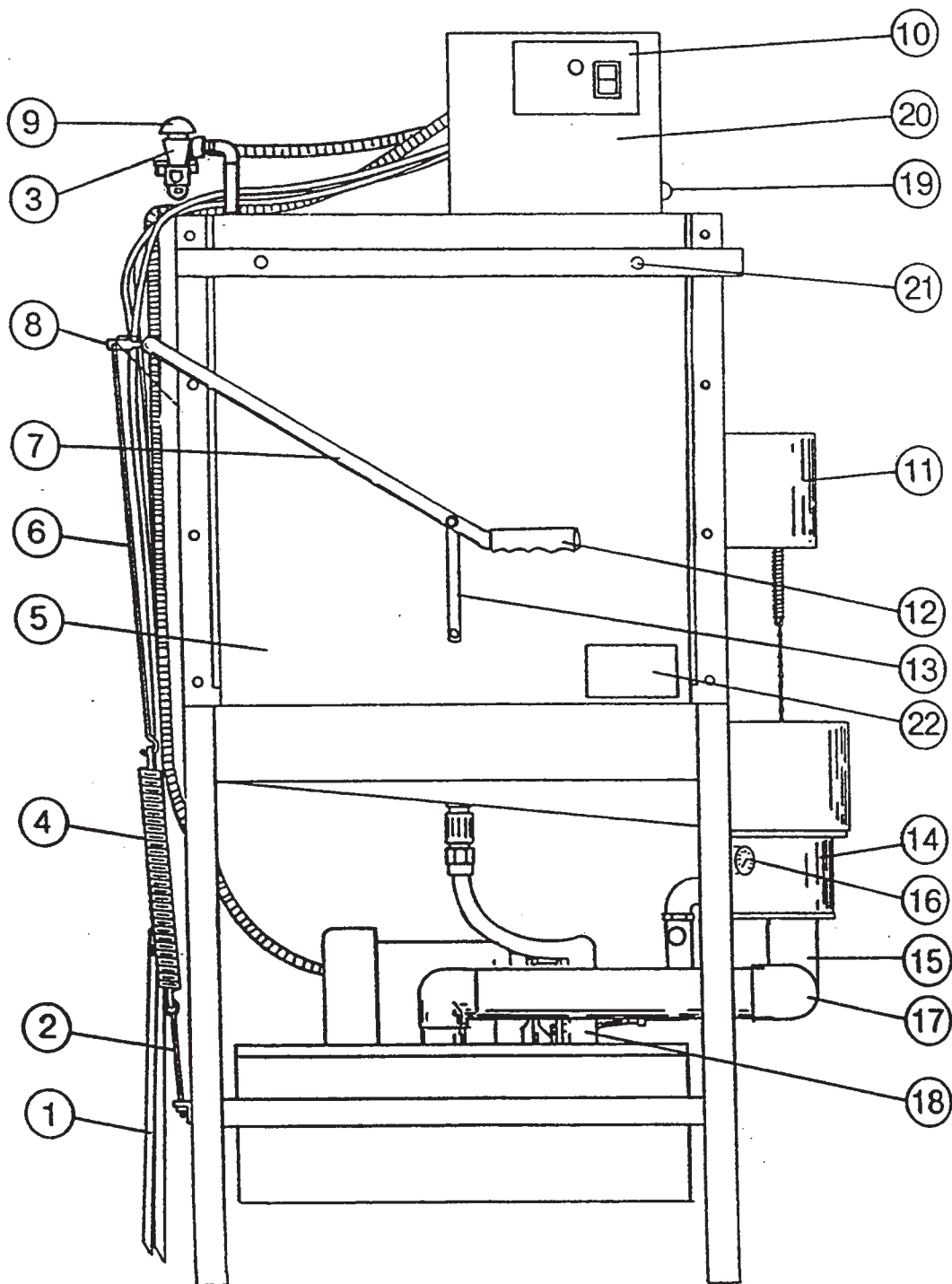
BACK SIDE VIEW
STRAIGHT THROUGH MODEL

ITEM	P/N	DESCRIPTION	ITEM	P/N	DESCRIPTION
1.	0009400	CANTILEVER, EYE BOLTS	10.	0154300	START SWITCH
2.	0087000	PUMP & MOTOR ASSEMBLY	11.	0084301	VACUUM BREAKER
3.	0009000	CANTILEVER SPRINGS	12.	0046510	DISPENSER INTAKE TUBING/WHITE
4.	0008703	CANTILEVER SPRING RODS		0046604	DISPENSER INTAKE TUBING/REF
5.	0011500	CANTILEVER DOOR COUPLER		0046605	DISPENSER INTAKE TUBING/BL
6.	0008500	CANTILEVER ARM	13.		CUSTOMER DRAIN CONNECTIC
7.	0008200	CANTILEVER MOUNTING BRACKET	14.	0143400	SOLENOID VALVE
8.	0009100	CANTILEVER YOKE ASSEMBLY	15.		INCOMING WATER CONNECTION 3/4"
9.	0020600	CONTROL & DISPENSER BOX	16.	0001201	110V POWER SUPPLY DECAL



RIGHT SIDE VIEW
STRAIGHT THROUGH MODEL

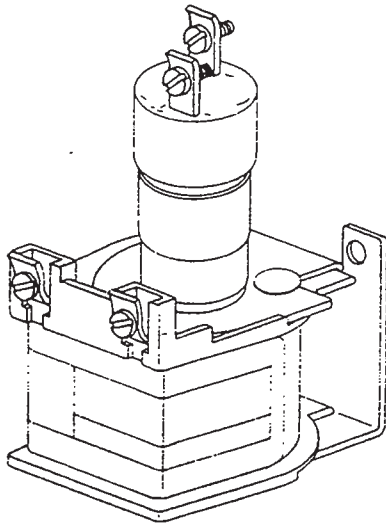
ITEM	P/N	DESCRIPTION	ITEM	P/N	DESCRIPTION
1.	See p. 16	PUMP & MOTOR ASSEMBLY	10.	0012000	CIRCUIT BREAKER/CUSTOMER ELECTRICAL SERVICE CONNECTION
2.		CUSTOMER DRAIN CONNECTION 2"	11.	0184301	VACUUM BREAKER
3.	0054203	DRAIN TEE-SUMP	12.	0143400	SOLENOID VALVE
4.	0054200	DRAIN HOUSING	13.		INCOMING WATER CONNECTION $\frac{3}{4}$ "
5.	0054102	DRAIN, STOPPER CHAIN	14.	0046512	DISPENSING TUBE STIFFENERS
6.	See p. 18	DRAIN, LINK & SPRING	15.	0087306	PLUMBING FROM SUMP TO PUMP
7.	0034000	COUNTER, CYCLE	16.	0087303	PLUMBING FROM PUMP TO MANIFOLD
8.	0154300	START SWITCH	17.	0001200	FILL & START SWITCH DECAL
8A.	0083500	CYCLE LIGHT	18.	0001202	WARNING DECAL
9.	0154300	FILL SWITCH	19.	0001204	DOOR CAUTION DECAL
9A.	0083500	POWER ON LIGHT			



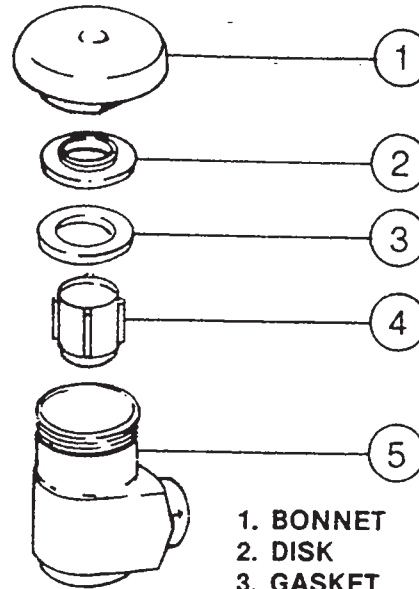
LEFT SIDE VIEW
STRAIGHT THROUGH MODEL

ITEM	P/N	DESCRIPTION	ITEM	P/N	DESCRIPTION
1.	0046512	DISPENSING TUBE STIFFENERS	12.	0008400	CANTILEVER HANDLE GRIPS
2.	0009400	CANTILEVER EYE BOLTS	13.	0011500	CANTILEVER DOOR COUPLER
3.	0143400	SOLENOID VALVE	14.	0054200	DRAIN HOUSING
4.	0009000	CANTILEVER SPRINGS	15.	0054203	DRAIN TEE-SUMP
5.	0048000	DOOR, SIDE	16.	0169000	WASH/RINSE THERMOMETER
6.	0008703	CANTILEVER SPRING ROD	17.		CUSTOMER DRAIN CONNECTION 2"
7.	0008500	CANTILEVER ARM	18.	0087000	PUMP & MOTOR ASSEMBLY
8.	0009100	CANTILEVER YOKE ASSEMBLY	19.	0029800	CONTROL & DISPENSER BOX LOCK ONLY W/KEY
9.	0184301	VACUUM BREAKER	20.	0029700	CNTRL BOX COVER ONLY W/OUT LOCK
10.	0001209	LH START SWITCH DECAL	21.	0049000	DOOR SPACER, SEID W/HDW
11.	0054120	DRAIN SOLENOID COVER	22.	0001204	DOOR CAUTION DECAL

MERCURY RELAY P/N 0122600, 110V
MERCURY RELAY P/N 0122700, 220V



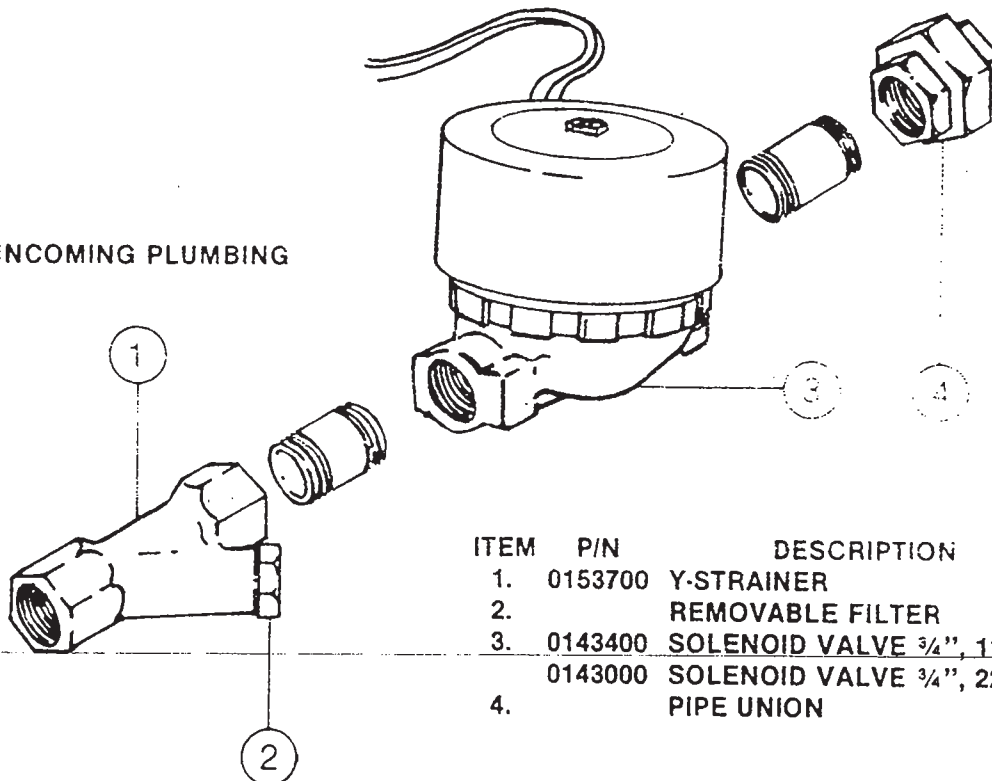
VACUUM BREAKER P/N 0184301



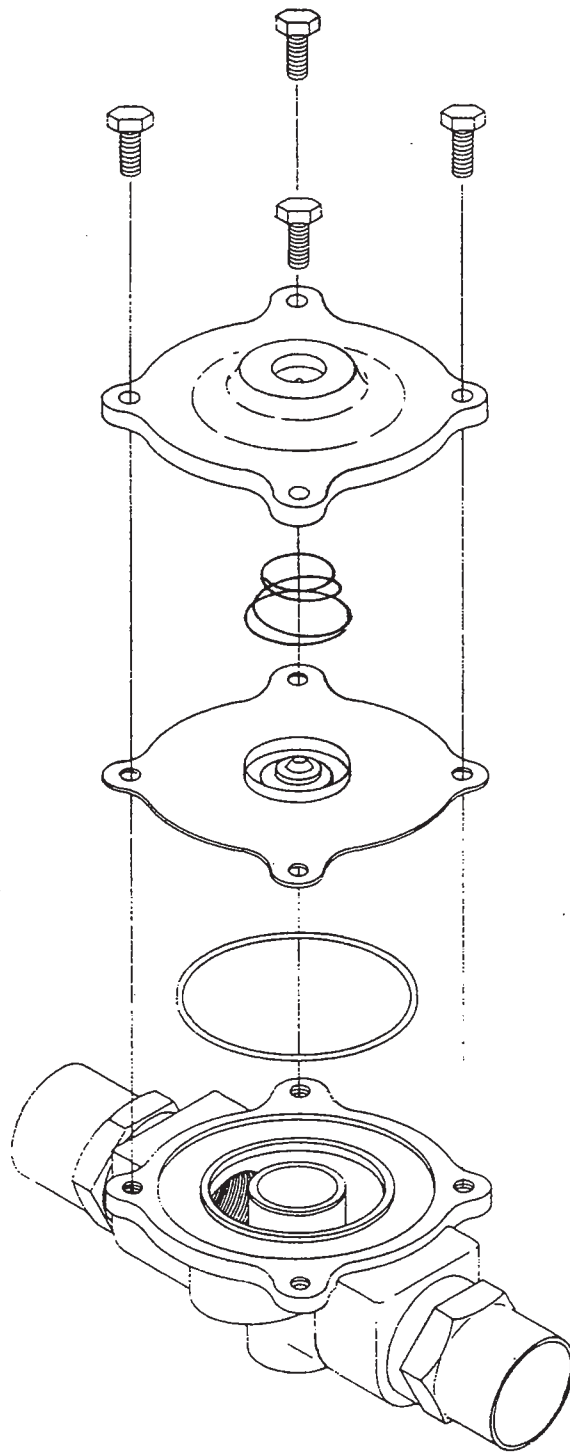
- 1. BONNET
- 2. DISK
- 3. GASKET
- 4. POPPET
- 5. BODY

REPAIR KIT P/N 0184400

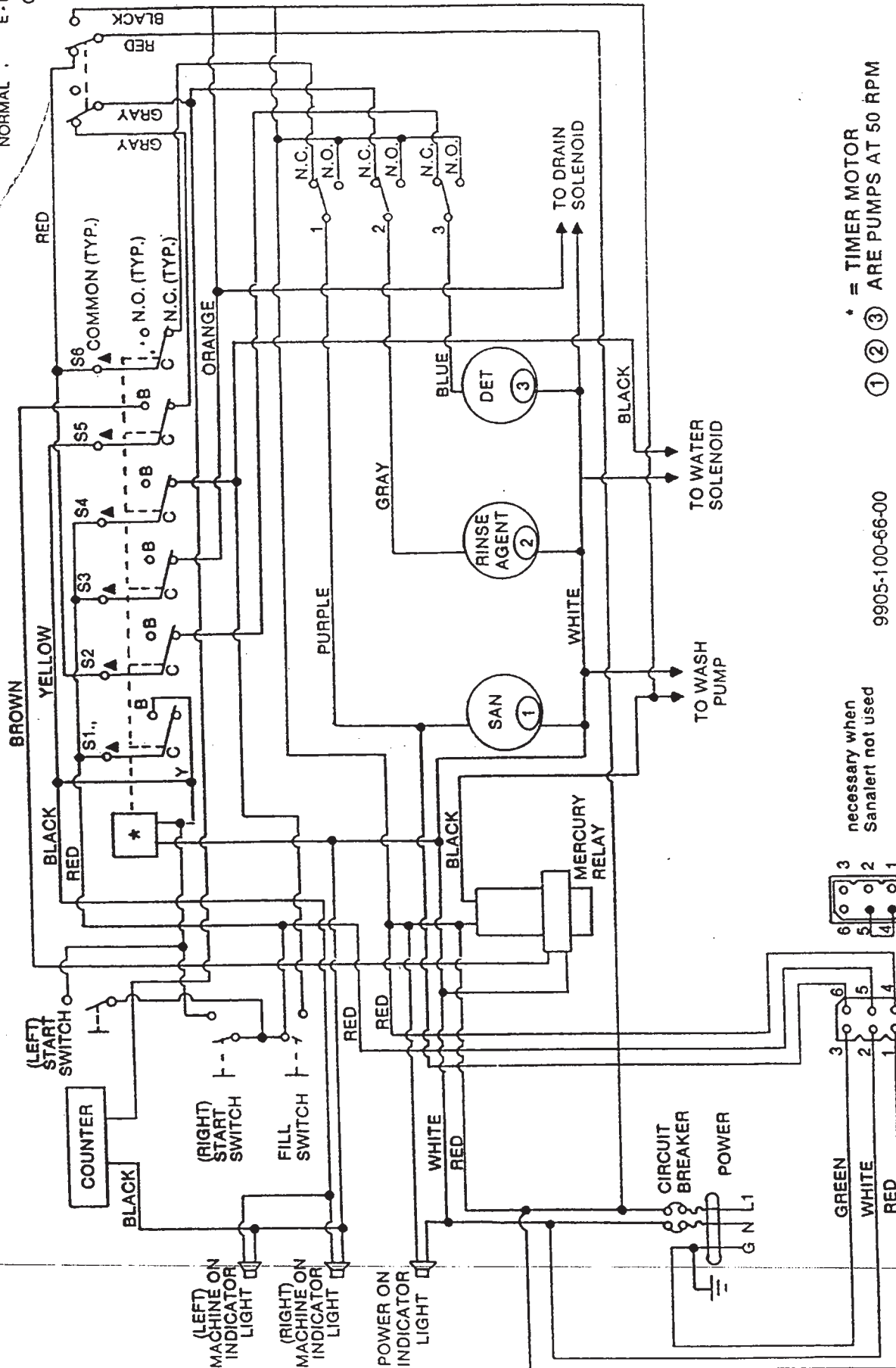
INCOMING PLUMBING



ITEM	P/N	DESCRIPTION
1.	0153700	Y-STRAINER
2.		REMOVABLE FILTER
3.	0143400	SOLENOID VALVE 3/4", 110V
	0143000	SOLENOID VALVE 3/4", 220V
4.		PIPE UNION



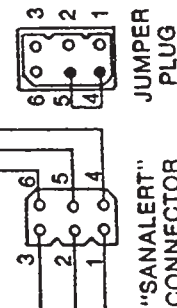
ANTI-FOAM VALVE 3/4"
ASSEMBLY P/N 0185500
DIAPHRAGM KIT 0185501



* = TIMER MOTOR
① ② ③ ARE PUMPS AT 50 RPM

9905-100-66-00

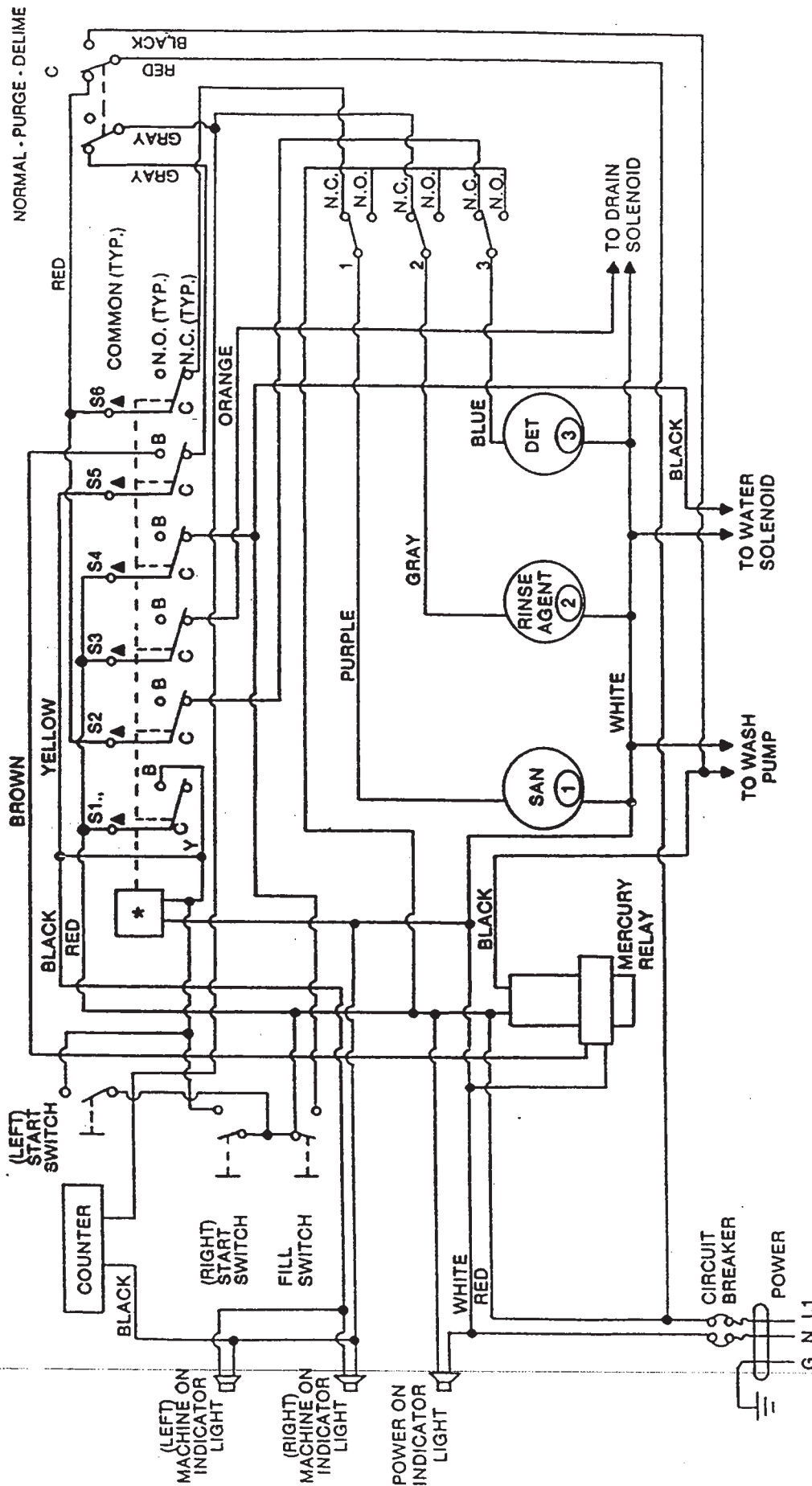
necessary when
Sanalert not used



POWER SUPPLY USE MINIMUM OF 12 GAUGE WIRE. DO NOT CONNECT TO A CIRCUIT PROTECTED BY A BREAKER LARGER THAN 20 AMPS.

SUPPLY CONN:
HOOK UP WITH CONDUIT ONLY.

CONSERVER I 110V/60 CY/ 1 PH
WITH SANALERT CONNECTION



* = TIMER MOTOR
 ① ② ③ ARE PUMPS AT 50 RPM

9905-100-66-00

POWER SUPPLY
 USE MINIMUM OF 12 GAUGE WIRE. DO NOT CONNECT TO A CIRCUIT PROTECTED BY A BREAKER LARGER THAN 20 AMPS.

SUPPLY CONN:
 HOOK UP WITH CONDUIT ONLY.

CONSERVER 110V/60 CY/1 PH
 WITHOUT SANALERT CONNECTION

32183-1

CONSERVER PARTS LIST

Part Number	Description	Number Used
0001201	110V Power Supply Decal	
0001202	Warning Decal	
0001203	Clean Strainer Decal	
0001204	Door Caution Decal	
0001208	Full & Start Switch Decal	
0001209	LH Start Switch Decal	
0001210	Operations Decal	
0001211	Timer Decal	
0008200	Cantilever Mounting Brackets	2
0008400	Cantilever Handle Grips	2
0008600	Cantilever Arm ONLY	1
0008700	Cantilever Spring Rods	2
0009000	Cantilever Springs	2
0009100	Cantilever Yoke Assembly	2
0009400	Cantilever Eye Bolts	2
0009600	Cantilever Nuts, for Eye Bolts	2
0010000	Cantilever Sleeve	2
0010300	Cantilever Bolt for Sleeve 1/4" x 1 3/8"	2
0010600	Cantilever Washer Flat, for Sleeve Bolt 1/4"	2
0010900	Cantilever Acorn Nut, for Sleeve Bolt 1/4"	2
0011200	Cantilever Lock Washer, for Sleeve Bolt 1/4"	2
0011500	Cantilever Door Coupler, to Cantilever	2
0011600	Cantilever Block, to Door	2
0012000	Circuit Breaker , 15 AMP	1
0020800	Control/Dispenser Box , Completely wired	1
0029700	Control Dispenser Box Cover, w/out lock	1
0029800	Control/Dispenser Box Lock Only, w/key	1
0034000	Counter , Cycle	1
0046000	Dispenser, Peristaltic Pump Complete, 230V, 50 Cycle	
0046100	Dispenser, Peristaltic Pump Motor, 230V, 50 CYCLE	
0046500	Dispenser , Peristaltic Pump Complete	3
0046501	Dispenser, Peristaltic Pump Motor	3
0046502	Dispenser, Peristaltic Pump Housing	3
0046503	Dispenser, Peristaltic Pump Housing Mounting Bolts, 10/32" Fillster Head (3)	12
0046504	Dispenser, Peristaltic Pump Cam Roller Assembly	3
0046505	Dispenser, Peristaltic Pump Cam Roller Set Screw	3
0046506	Dispenser, Peristaltic Pump Hose	3
0046507	Dispenser, Peristaltic Pump Hose Clamp (2)	6
0046508	Dispenser, Peristaltic Pump Face Plate	3
0046509	Dispenser, Peristaltic Pump Face Plate Mounting Screws, 8/32" (4)	12
0046510	Dispenser, Peristaltic Pump Intake or Outlet Tubing, per foot (specify color)	3
0046512	Dispenser, Intake Tubing Stiffeners	3
0048001	Door, Side	2
0049000	Door Spacer, Side	
0049500	Door Screw, for Spacer 1/4" 20 x 1 3/8"	
0049600	Door Stop w/nut and Bolt N/S	
0051000	Door, Handle for Lid	1
0051800	Door, Nylatron Guides	4
0052200	Door Strip s/s Glue, Tube	
0053810	Drain Ball	2
0053811	Drain Stem	2
0053812	Drain Stopper Seat Plate	2
0053813	Drain Stopper Ball & Stem	2
0054100	Drain, Assembly Complete	2
0054101	Drain, Bolt, Chain to Stopper	2
0054102	Drain, Stopper Chain	2
0054103	Drain, Link Spring	2
0054104	Drain, Bolts, Solenoid to Plate (4)	8
0054105	Drain, Solenoid Coil Straps	8
0054106	Drain, Solenoid Coil, 115V	2
0054107	Drain, Adjusting Lever	2
0054108	Drain, Mounting Plate	2
0054109	Drain, Cotter Pins (2)	2
0054110	Drain, Link	4
0054111	Drain, Link Slotted Washers (2)	4

CONSERVER PARTS LIST

Part Number	Description	Number Used
0054114	Drain, Solenoid Cover	1
0054116	Drain, Solenoid Coil, 220V	1
0054212	Drain, Housing L/H	2
0054218	Drain, Housing R/H	2
0054201	Drain, Housing Gasket Upper	2
0054202	Drain, Housing Gasket, Lower	2
0054203	Drain, Tee-Sump	2
0054204	Drain Housing, Single Drain N/S Special Units	2
0054205	Drain Housing, Gasket, Upper, Single Drain N/S	2
0083500	Light, Indicator	2
0086900	Pump Motor, 1 HP, 2850 RPM, 220V, 1 phase, 50 cycle	2
0087000	Pump & Motor Assembly Complete 1 HP, 3450 RPM. 115V, 1 phase, 60 cycle	2
0087001	Pump, Motor, 115V, 1 HP, 3450 RPM	2
0087002	Pump, Motor Shaft Deflector	2
0087003	Pump, Housing to Flange Cap Screw (8)	16
0087004	Pump, Housing to Motor Cap Screw (4)	8
0087005	Pump, Housing	2
0087006	Pump, Ceramic Face for Seal	2
0087007	Pump, Mechanical Seal	2
0087008	Pump, Impeller	2
0087009	Pump, Impeller Nut	2
0087010	Pump, Flange Gasket	2
0087012	Pump, Flange Petcock	2
0087100	Pump & Motor Mounting Plate	2
0122600	Relay, Mercury	2
0122700	Relay, Mercury, 220V	2
0143000	Solenoid Valve, 3/4", 220V, J E	2
0143400	Solenoid Valve, J E, 3/4", 110V	2
0143500	Solenoid Valve Coil, J E, 110V	2
0145500	Solenoid Valve Diaphragm Cartridge and 'O' Ring, 3/4" J E	2
0148000	Solenoid Valve 'O' Ring, 3/4" J E	2
0148500	Solenoid Valve Plunger Assembly, for 1/2" and 3/4" J E	2
0150000	Solenoid Valve Strainer Screen, 3/4" J E	2
0150100	Solenoid Valve Gasket 3/4" J E	2
0152100	Strainer, Pump/Drain Line	2
0152300	Strainer, Pump/Drain Line, Single Drain, N/S	2
0153700	Strainer, Y 3/4"	1
0154300	Switch, Primer, Drain, Rocker Type	5
0165500	Terminal Board, 3 Pole, Complete	1
0169000	Thermometer, Rigid Stem	1
0171100	Timer, 110V w/wires, Adjustable, 6 Cams	1
0173100	Timer Motor, 110V Single Cycle	1
0173200	Timer, w/wires Single Cycle, 220V, 50 Cycle	1
0177600	Timer Micro Switch	6
0179500	Track Assembly Complete	1
0184301	Vacuum Breaker, 3/4" Conbraco	1
0184400	Vacuum Breaker, 3/4" Conbraco Repair Kit	1
0185000	Valve, 1/4" for Health Inspectors Gauge	1
0185500	Valve, Anti-Foam, 3/4"	1
0185501	Valve Anti-Foam Diaphragm Kit	1
0199400	Wash/Rinse Head Assembly N/S	1
0199401	Wash/Rinse Head Tube & Hub Assembly	1
0199402	Wash/Rinse Head Bearing Spindle N/S	1
0199403	Wash/Rinse Head Retaining Ring S/S	1
0199404	Wash/Rinse Head Bearing N/S	2
0199500	Wash/Rinse Head Assembly Comp	4
0199501	Wash/Rinse Head End Plugs	8
0199502	Wash/Rinse Head Vee Jets	32
0199503	Wash/Rinse Head Tube	8
0199504	Wash/Rinse Head Bearing & Shaft Assembly	4
0199505	Wash/Rinse Head Thumb Screws	8
0199506	Wash/Rinse Head Adaptor Riser	2
0199600	Wash/ Rinse Head Manifold	2
0199601	Wash/Rinse Head Manifold Gasket	2
0199612	Wash/Rinse Head Manifold; Left	1
0199613	Wash/Rinse Head Manifold; Right	1

CONSERVER PARTS LIST

Part Number	Description	Used on*
541H	Drain, Mounting Plate	X
541I	Drain, Cotter Pins (2)	X
541K	Drain, Link Slotted Washers (2)	X
541R	Drain, Link	X
541Q	Drain, Bolt w/Locknut	X
541T	Drain, Solenoid Cover	S
542	Drain, Housing	X
542A	Drain, Housing Gasket Upper	X
542B	Drain, Housing Gasket Lower	X
542C	Drain, Tee-Sump	X
542F	Drain, Solenoid Housing	
542H	Drain, Solenoid Wire Conduit	
835	Light, Indicator	X
870	Pump & Motor Assembly Complete, 1HP, 3450 RPM, 115V, 1 phase, 60 cycle	X
870A	Pump, Motor 115V, 1 HP, 3450 RPM	X
870B	Pump, Motor Shaft Deflector	X
870C	Pump, Housing to Flange Cap Screw (8)	X
870D	Pump, Housing to Motor Cap Screw (4)	X
870E	Pump, Housing	X
870F	Pump, Ceramic Face for Seal	X
870G	Pump, Mechanical Seal	X
870H	Pump, Impeller	X
870I	Pump, Impeller Nut	X
870J	Pump, Flange Gasket	X
870K	Pump, Flange	X
870L	Pump, Flange Petcock	X
871	Pump & Motor Mounting Plate	X
873A	Plumbing from Sump to Pump	C
873B	Plumbing from Pump to Manifold	C
873C	Plumbing from Pump to Manifold	S
873F	Plumbing from Sump to Pump	S
1226	Relay, Mercury	X
1434	Solenoid Valve, J E, 3/4", 110V	X
1436	Solenoid Valve Coil, J E, 110V	X
1455	Solenoid Valve Diaphragm Cartridge J E, 3/4"	X
1486	Solenoid Valve Plunger Assembly, J E, 3/4"	X
1521	Strainer, Pump/Drain Line	S
1522	Strainer, Pump/Drain Line	C
1537	Strainer, "Y" 3/4"	X
1543	Switch, Primer, Drain, Start, Fill, Rocker Type	X
1563	Delime Rocker Switch	X
1690	Thermometer, Rigid Stem	X
1711	Timer, 110V w/wires, Adjustable, 6 Cams	X
1731	Timer Motor, 110V Single Cycle	X
1776	Timer Micro Switch	X
1791	Track Assembly Corner Straight Thru Convertible	X
1843A	Vacuum Breaker, 3/4" Conbraco	X
1844	Vacuum Breaker, 3/4" Conbraco Repair Kit	X
1995	Wash/Rinse Head Assembly Comp	X
1995A	Wash/Rinse Head End Plugs	X
1995B	Wash/Rinse Head Vee Jets (8)	X
1995C	Wash/Rinse Head Tube	X
1995D	Wash/Rinse Head Bearing & Shaft Assembly	X
1995E	Wash/Rinse Head Thumb Screws	X
1996	Wash/Rinse Head Manifold	X
1996A	Wash/Rinse Head Manifold Gasket	X
2041A	Waste Accumulator	X

*S = Straight Through Model

C = Corner Model

X = Both Models

ORDERING REPLACEMENT WIRE

ORDERING REPLACEMENT WIRE FOR YOUR DISHMACHINE

Jackson dishmachines have several color and gauges of wire used in them and it may become necessary to replace these wires. Wire may be ordered from Jackson MSC Inc., but please note that it is only available in feet. Ensure that you order the correct color and gauge.

BLACK WIRE:

6 Gauge	6145-002-15-91
8 Gauge	6145-104-43-00
10 Gauge	6145-104-16-00
12 Gauge	6145-112-01-00
14 Gauge	6145-104-09-00
18 Gauge	6145-104-01-97
18 Gauge with Orange Stripes	6145-011-35-66
18 Gauge with White Stripes	6145-011-35-65
18 Gauge with Yellow Stripes	6145-011-35-64

BLUE WIRE:

6 Gauge	6145-002-15-93
8 Gauge	6145-104-44-00
10 Gauge	6145-104-42-00
14 Gauge	6145-104-04-00
18 Gauge	6145-104-35-00
18 Gauge with Black Stripes	6145-011-46-35
18 Gauge with Red Stripes	6145-011-46-37
18 Gauge with White Stripes	6145-011-46-36
18 Gauge with Yellow Stripes	6145-011-46-38
20 Gauge	6145-104-06-97
20 Gauge with Black Stripes	6145-104-17-97
20 Gauge with White Stripes	6145-104-13-97

GREEN WIRE:

8 Gauge	6145-002-15-94
14 Gauge	6145-104-03-00
18 Gauge	6145-104-32-00
18 Gauge with Yellow Stripes	6145-001-44-96
20 Gauge	6145-104-05-97
20 Gauge with Black Stripes	6145-011-59-57
20 Gauge with Yellow Stripes	6145-104-11-97

GREY WIRE:

18 Gauge	6145-104-36-00
18 Gauge with Black Stripes	6145-011-81-71
18 Gauge with Blue Stripes	6145-011-81-72
18 Gauge with Red Stripes	6145-011-46-41
18 Gauge with White Stripes	6145-011-35-60
18 Gauge with Yellow Stripes	6145-011-46-42
20 Gauge	6145-104-03-97

RED WIRE:

6 Gauge	6145-002-15-92
8 Gauge	6145-104-45-00
10 Gauge	6145-104-08-00
14 Gauge	6145-104-05-00
18 Gauge	6145-104-37-00
18 Gauge with Black Stripes	6145-011-59-56
18 Gauge with Blue Stripes	6145-011-81-74
18 Gauge with White Stripes	6145-011-81-73
18 Gauge with Yellow Stripes	6145-011-81-75
20 Gauge	6145-104-02-97

WHITE WIRE:

10 Gauge	6145-104-19-00
14 Gauge	6145-104-10-00
18 Gauge	6145-104-39-00
18 Gauge with Black Stripes	6145-011-35-70
18 Gauge with Blue Stripes	6145-011-46-40
18 Gauge with Green Stripes	6145-011-35-69
18 Gauge with Grey Stripes	6145-002-20-18
18 Gauge with Red Stripes	6145-011-35-67
18 Gauge with Yellow Stripes	6145-011-35-68
20 Gauge	6145-104-04-97
20 Gauge with Orange & Yellow Stripes	6145-104-16-97
20 Gauge with Yellow Stripes	6145-104-15-97

YELLOW WIRE:

18 Gauge	6145-104-33-00
18 Gauge with Black Stripes	6145-011-81-68
18 Gauge with Blue Stripes	6145-011-81-70
18 Gauge with Red Stripes	6145-011-81-69
20 Gauge	6145-104-07-97

ORDERING REPLACEMENT WIRE (CONTINUED)/CONDUIT & FITTINGS

MISCELLANEOUS WIRE:

Brown (18 Gauge)	6145-104-20-00
Brown (20 Gauge)	6145-104-08-97
Orange (18 Gauge)	6145-104-34-00
Orange with Black Stripes (18 Gauge)	6145-011-35-62
Orange with Blue Stripes (18 Gauge)	6145-011-46-39
Orange with White Stripes (18 Gauge)	6145-011-35-63
Orange with Yellow Stripes (18 Gauge)	6145-011-35-61
Orange (20 Gauge)	6145-104-10-97
Pink (18 Gauge)	6145-011-82-69
Purple (18 Gauge)	6145-104-31-00
Violet (20 Gauge)	6145-104-09-97
Plug, GFI	6145-001-97-90
Cable, 16 Gauge, 3 Wire Romex	6145-001-98-29
Cord, Hubble Plug MC	6145-011-47-23
Cord, S-J	6145-011-49-02
Cord, Power	6145-011-70-28
Cord, 115V Power	6145-309-02-00
Cord, 125V Power, 96 " Long	6145-309-04-00

CONDUIT AND RELATED FITTINGS

Jackson dishmachines come with a wide variety of conduit and fittings for use in routing the wires of the machine. The list below provides for most of stock of such items. When ordering, remember that Jackson does not offer pre-cut sections of conduit for your machine, instead it is sold by the foot. Please take into account the slack that will be necessary once installing the new conduit to ensure that it fits correctly. It is recommended that you order at least 6" more conduit than you require to ensure that you have enough for trimming.

CONDUIT:

Conduit, 1/2", Liquidtite	5975-101-25-00
Conduit, 1/2", Non-Metallic	5975-111-46-57
Conduit, 1/2", PVC	5975-105-04-00
Conduit, 1/2", Sealtite	5975-105-01-00
Conduit, 1/2", Xtraflex	5975-105-06-44
Conduit, 3/8", Liquidtite	5975-105-02-00
Conduit, 3/4", Cole-Flex	5975-105-05-00
Conduit, 3/4", Liquidtite	5975-105-03-00
Conduit, 3/4", Non-Metallic	5975-011-47-71
Conduit, 3/4" Xtraflex	5975-105-07-44
Conduit, 1", Carlon	5975-011-68-42

CONDUIT FITTINGS:

Elbow, Cole-Flex, 1/2", 90 Degree	5975-205-40-00
Elbow, Xtraflex, 1/2", 90 Degree	5975-205-44-44
Elbow, Xtraflex, 3/4", 90 Degree	5975-205-45-44
Fitting, 1/2" Straight	5975-011-45-13
Fitting, 1/2", Straight, Zinc Plated	5975-111-89-89
Fitting, 1/2", 45 Degree	5975-011-45-23
Fitting, 1/2", 45 Degree, Zinc Plated	5975-111-89-86
Fitting, 1/2", 90 Degree	5975-011-45-14
Fitting, 1/2", 90 Degree, Zinc Plated	5975-111-89-88
Fitting, 3/4", Straight	5975-011-47-72
Fitting, 3/4", 45 Degree	5975-011-47-74
Fitting, 3/4", 90 Degree	5975-011-47-73
Fitting, 1", Straight	5975-011-70-75

Fitting, 1", 90 Degree	5975-011-68-43
Fitting, Cole-Flex, 1/2" Straight	5975-205-03-00
Fitting, Cole-Flex, 3/4" Straight	5975-205-41-00
Fitting, Cole-Flex, 3/4", 90 Degree	5975-204-42-00
Fitting, Liquidtite, .231 ID/.394 OD	5975-011-49-03
Fitting, Liquidtite, .25 ID/.546 OD	5975-011-65-51
Fitting, Liquidtite, .27 ID/.48 OD	5975-011-59-50
Fitting, Liquidtite, 1/2", 90 Degree	5975-111-01-00
Fitting, Liquidtite, 3/8", Straight	5975-205-03-82
Fitting, Liquidtite, 3/8", 90 Degree	5975-205-02-82
Fitting, Liquidtite, 3/4", Straight	5975-205-15-02
Fitting, Liquidtite, 3/4", 45 Degree	5975-205-01-82
Fitting, Liquidtite, 3/4", 90 Degree	5975-205-07-82
Fitting, Xtraflex, 1/2", Straight	5975-205-47-44
Fitting, Xtraflex, 3/4", Straight	5975-205-46-44
Nut, 1-1/4"	5975-011-42-54

ORDERING REPLACEMENT FASTENERS

Dishmachines come with a variety of fasteners used to hold them together. On the following pages will be comprehensive list of all of the fasteners you may order. Jackson reserves the right to require minimum quantities to be ordered.

SCREWS:

Screw, 1/4"-20 x 1/4", Set	5305-002-10-14
Screw, 1/4"-20 x 1/2", Phillips Truss Head	5305-174-03-00
Screw, 1/4"-20 x 1/2", Set Screw	5305-011-71-51
Screw, 1/4"-20 x 1/2", Slotted Truss Head	5305-002-22-81
Screw, 1/4"-20 x 1/2", Thumb	5305-011-38-62
Screw, 1/4"-20 x 1/2", with Rubber Washer	5305-974-01-00
Screw, 1/4"-20 x 5/8", 80 Deg CSink	5305-002-20-30
Screw, 1/4"-20 x 5/8", Hex Head	5305-274-24-00
Screw, 1/4"-20 x 5/8", Phillips Truss Head	5305-174-04-00
Screw, 1/4"-20 x 1-1/8", Hex Head	5305-274-21-00
Screw, 1/4"-20 x 1-1/4", Flat Head	5305-174-19-00
Screw, 1/4"-20 x 1-3/8", Hex Head	5305-274-19-00
Screw, 1/4"-20 x 1-1/2", Flat Head	5305-174-11-00
Screw, 1/4"-20 x 1-1/2", Hex Head	5305-274-23-00
Screw, 1/4"-20 x 1-1/2", Phillips Head	5305-011-44-50
Screw, 1/4"-20 x 1-1/2", Slotted Truss Hd	5305-002-22-82
Screw, 1/4"-20 x 1-3/4", Hex Head	5305-274-10-00
Screw, 1/4"-20 x 3-3/4", Hex Head	5305-011-93-68
Screw, 5/16"-18 x 1/2", Hex Head	5306-011-88-67
Screw, 5/16"-18 x 1-1/4", Flat Head	5305-011-83-49
Screw, 3/8"-16 x 1", Socket Head	5305-356-04-00
Screw, 3/8"-16 x 1-1/4", Hex Head Plated	5305-256-04-00
Screw, 3/8"-16 x 2", Cap	5305-011-74-98
Screw, 4-40 x 1/4", Phillips Pan Head	5305-011-36-92
Screw, 4-40 x 3/8", Phillips Truss Head	5305-011-59-70
Screw, 4-40 x 1/2" Phillips Pan Head	5305-011-38-19
Screw, 4-40 x 5/8" Phillips Truss Head	5305-011-49-70
Screw, 4-40 x 3/4", Phillips Pan Head	5305-011-59-64
Screw, 4-40 x 1", Slotted Pan Head	5305-179-01-00
Screw, 6-32 x 1/4", Flat Head	5305-171-01-00
Screw, 6-32 x 1/4", Round Head	5305-151-02-00
Screw, 6-32 x 1/2", Phillips Head	5305-171-15-00
Screw, 6-32 x 1/2", Phillips Truss Head	5305-011-39-34
Screw, 6-32 x 3/8", Phillips Head	5305-171-02-00
Screw, 6-32 x 3/8", Phillips Round Head	5305-171-07-00
Screw, 6-32 x 5/8", Phillips Round Head	5305-011-39-85
Screw, 6-32 x 3/4", Round Head	5305-171-03-00
Screw, 6-32 x 3/4", Phillips Pan Head	5305-011-37-05
Screw, 6-32 x 7/8", Phillips Round Head	5305-171-10-00
Screw, 8-32 x 1/4", Phillips Pan Head	5305-172-09-00
Screw, 8-32 x 1/4", Slotted Round Head	5305-172-01-00
Screw, 8-32 x 3/8", Phillips Flat Head	5305-776-03-00
Screw, 8-32 x 3/8", Phillips Flat Head	5305-011-37-07
Screw, 8-32 x 3/8", Round Head	5305-172-02-00
Screw, 8-32 x 1/2", Hex Head	5305-002-02-87
Screw, 8-32 x 1/2", Phillips Flat Head	5305-011-37-06
Screw, 8-32 x 3/4", Phillips Round Head	5305-172-06-00
Screw, 10-24 x 3/8", Flat Head Undercut	5305-773-02-00
Screw, 10-24 x 3/8", Phillips Truss Head	5305-173-03-00
Screw, 10-24 x 1/2", Phillips Truss Head	5305-173-18-00
Screw, 10-24 x 1/2", Set	5305-473-02-00
Screw, 10-24 x 5/8", Hex Head	5305-011-40-89
Screw, 10-24 x 3/4", Hex Head	5305-273-05-00
Screw, 10-24 x 2-1/4", Hex Head	5305-011-38-10
Screw, 10-32 x 1/4", Round Head	5305-173-01-00
Screw, 10-32 x 3/8", Phillips Pan Head	5305-173-26-00
Screw, 10-32 x 3/8", Phillips Truss Head	5305-173-12-00
Screw, 10-32 x 3/8", Round Head, Slotted	5305-173-02-00

Screw, 10-32 x 1/2", Phillips Flat Head	5305-011-44-51
Screw, 10-32 x 1/2", Phillips Pan Head	5305-011-44-52
Screw, 10-32 x 1/2", Phillips Truss Head	5305-011-39-36
Screw, 10-32 x 1/2", Self Tapping	5305-011-62-69
Screw, 10-32 x 1/2", Slotted Truss	5305-173-04-00
Screw, 10-32 x 5/8", Fillister Head	5305-973-02-00
Screw, 10-32 x 3/4", Shoulder, .25 Shoulder	5305-011-86-65
Screw, 10-32 x 3/4", Phillips Truss Head	5305-011-62-17
Screw, 10-32 x 3/4", Phillips Truss Head	5305-011-49-33
Screw, 10-32 x 7/8", Fillister Head	5305-973-04-00
Screw, 10-32 x 7/8", Hex Head	5305-279-01-00
Screw, 10-32 x 1", Phillips Pan Head	5305-002-19-42
Screw, 10-32 x 1-1/8" Fillister Head	5305-973-03-00
Screw, 10-32 x 1-1/4", Phillips Truss Head	5305-011-66-03
Screw, 10-32 x 1-1/4", Socket Head	5305-356-16-00
Screw, 10-32 x 1-1/2", Fillister Head	5305-973-01-00
Screw, 10-32 x 1-3/4", Phillips Pan Head	5305-011-62-67
Screw, 10-32 x 1-3/4", Self Tapping	5305-011-59-92

BOLTS:

Bolt, 1/4"-20 x 3/8", Hex Head	5305-274-20-00
Bolt, 1/4"-20 x 1/2", Hex Head	5305-274-02-00
Bolt, 1/4"-20 x 3/4", Hex Head	5305-274-04-00
Bolt, 1/4"-20 x 7/8", Hex Head	5305-274-05-00
Bolt, 1/4"-20 x 1", Hex Head	5305-254-06-00
Bolt, 1/4"-20 x 1-1/4", Hex Head	5305-274-22-00
Bolt, 1/4"-20 x 2", Hex Head	5306-011-84-72
Bolt, 1/4"-20 x 2-1/4", Hex Head	5305-011-30-50
Bolt, 1/4"-20 x 2-1/2", Hex Head	5306-011-83-52
Bolt, 1/4"-20 x 2-3/4", Hex Head	5306-011-46-62
Bolt, 1/4"-20 x 3-1/4", Hex Head	5306-002-05-55
Bolt, 5/16"-18 x 5/8", Hex Head	5305-275-09-00
Bolt, 5/16"-18 x 3/4", Hex Head	5305-275-04-00
Bolt, 5/16"-18 x 1", Hex Head	5305-275-06-00
Bolt, 5/16"-18 x 1-1/4", Hex Head	5305-275-10-00
Bolt, 3/8"-16 x 3/4", Hex Head	5306-011-71-60
Bolt, 3/8"-16 x 7/8", Hex Head	5306-011-36-95
Bolt, 3/8"-16 x 1", Hex Head	5305-276-03-00
Bolt, 3/8"-16 x 1", Hex Head, Plated	5305-256-03-00
Bolt, 3/8"-16 x 1-1/4", Hex Head	5305-276-10-00
Bolt, 3/8"-16 x 1-3/4", Hex Head	5306-011-36-94
Bolt, 3/8"-16 x 2-1/4", Hex Head	5306-011-95-12
Bolt, 3/8"-16 x 2-3/4", U-Bolt	5306-011-51-34
Bolt, 3/8"-16 x 4", Hex Head	5306-956-02-00
Bolt, 1/2"-13 x 1-3/4"	5305-011-71-94
Bolt, 10-24 x 3/8", Hex Head	5306-011-63-29
Bolt, 10-32 x 3/8"	5306-011-62-45

ORDERING REPLACEMENT FASTENERS (CONTINUED)

LOCKWASHERS:

Lockwasher, 1/4", Split	5311-274-01-00
Lockwasher, 3/8", Split	5311-276-01-00
Lockwasher, 3/8", Split	5311-256-01-00
Lockwasher, 5/8"	5311-278-02-00
Lockwasher, 5/16", Split	5311-275-01-00
Lockwasher, 5/16", Split, Cad Plated	5311-255-01-00
Lockwasher, #4, External Tooth	5311-011-59-70
Lockwasher, #6 External Tooth	5311-271-02-00
Lockwasher, #8	5311-272-02-00
Lockwasher, #8, External Tooth	5311-272-01-00
Lockwasher, #8, Internal Tooth	5311-272-03-00
Lockwasher, #10, External Tooth	5311-273-02-00
Lockwasher, #10, Internal Tooth	5311-273-03-00
Lockwasher, #10, Split	5311-273-01-00

FLAT WASHERS:

Washer, Flat, Brass, 3/32" ID	5311-129-08-00
Washer, Flat, Brass, 1/4" ID	5311-129-09-00
Washer, 1/4" ID x 3/4" OD	5311-011-76-30
Washer, Flat, 5/16" ID	5311-175-01-00
Washer, Flat, Brass, 5/16", Cadplated	5311-156-01-00
Washer, Flat, S/S, 3/8" ID	5311-176-01-00
Washer, 3/8" ID x 9/16" OD	5311-011-71-49
Washer, 1/2" ID x 1" OD x 1/8" Thick	5311-011-71-48
Washer, 1/2" ID x 1-5/16" OD, Cadplated	5311-157-01-00
Washer, Nylon, .51" ID x .76" OD	5311-011-62-65
Washer, Flat, S/S, 11/16 " ID x 1/2" OD	5311-178-01-00
Washer, 7/8" ID x 1-1/2" OD	5311-011-35-37
Washer, Flat, 1/4" ID	5311-174-01-00
Washer, Flat, #10	5311-173-02-00

LOCKNUTS:

Locknut, 1/4"-20 with Nylon, High Profile	5310-374-01-00
Locknut, 1/4"-20 with Nylon, Low Profile	5310-374-02-00
Locknut, 5/16"-24 with Nylon, High Profile	5310-375-01-00
Locknut, 5/16"-24 with Nylon, Low Profile	5310-374-03-00
Locknut, 3/8"-16, with Nylon, High Profile	5310-011-72-55
Locknut, 3/8"-16, with Nylon, Low Profile	5310-376-02-00
Locknut, 4-40, with Nylon	5310-279-06-00
Locknut, 6-32, with Nylon	5310-373-03-00
Locknut, 10-24, with Nylon	5310-373-01-00
Locknut, 10-32, with Nylon	5310-373-02-00

HEX NUTS:

Nut, Hex, 1/4"-20	5310-274-01-00
Nut, Hex, 1/4"-20, Cad Plated	5310-254-01-00
Nut, Hex, 5/16"-18	5310-275-01-00
Nut, Hex, 5/16"-18, Cad Plated	5310-255-01-00
Nut, Hex, 3/8"-16	5310-276-02-00
Nut, Hex, 3/8"-16, Cad Plated	5310-256-02-00
Nut, Hex, 1/2"-13	5310-011-72-58
Nut, Hex, 6-32	5310-271-01-00
Nut, Hex, 8-32	5310-272-01-00
Nut, Hex, 10-24	5310-273-02-00
Nut, Hex, 10-32	5310-273-01-00

MISCELLANEOUS NUTS:

Nut, 1/4"-20, Acorn	5310-174-01-00
Nut, 1/4"-20, Hex, Serrated	5310-011-66-49
Nut, 1/4"-20, Wing, Nylon	5310-994-01-00
Nut, 5/16"-18, Keps	5310-955-01-00
Nut, 5/8"-18, Brass	5310-228-01-11
Nut, 6-32, Keps	5310-002-24-29
Nut, 10-24, Hex Cap	5310-173-01-00
Nut, 10-24, Wing, Nylon	5310-993-01-00

ORDERING REPLACEMENT HOSE & TUBING

Tubing and hose are ordered by the foot. Jackson MSC Inc. reserves the right to require minimum ordering quantities for the items below.

HOSE:

Hose, 3/16" ID x 5/16" OD	4720-601-40-00
Hose, 1/4" ID x .062" Wall, Excelon	4720-111-59-46
Hose, 1/4" ID x 1/2" OD, 300-350 PSI	4720-011-95-43
Hose, 3/8" ID x 5/8" OD, 300 PSI	4720-002-31-63
Hose, 3/8" ID x 5/8" OD, PVC	4720-011-35-41
Hose, 3/8" ID x 3/4" OD, PVC	4720-111-35-41
Hose, 1/2" ID x 3/4" OD	4720-011-94-01
Hose, 1/2" ID, Reinforced	4720-011-63-06
Hose, 5/8" ID x 7/8" OD, PVC	4720-601-14-00
Hose, 3/4" ID x 1" OD	4720-011-94-10
Hose, 3/4" ID, Nylon Reinforced	4720-011-63-02
Hose, 1" ID x 1-1/4" OD, EPDM	4720-111-39-73
Hose, 1-1/4" ID x 1-1/2" OD, Reinforced	4720-601-42-00
Hose, 1-1/4" ID, Reinforced	4720-011-44-47
Hose, 1-1/2" ID, Clear Wire Reinforced	4720-111-34-60
Hose, 2" ID, Nylon Reinforced	4720-011-63-25
Hose, 2" ID, Reinforced Flex Drain	4720-011-63-04
Hose 2" ID x 3" OD, EPDM	4720-011-88-02

TUBING:

Tubing, 1/8" OD, Paraflex	4720-111-58-09
Tubing, 3/16" ID x .54" OD, CPVC	4720-111-35-31
Tubing, 1/4" OD	4720-111-51-65
Tubing, 1/4" OD, Blue	4720-601-11-00
Tubing, 1/4" OD, Red	4720-601-12-00
Tubing, 1/4" OD, White	4720-601-13-00
Tubing, 1/4" OD, Paraflex	4720-111-51-70
Tubing, 1/4" ID x 3/8" OD, Tygon	4720-001-97-65
Tubing, 1/2" ID x 13/16" OD, Polypropylene	4720-601-24-00
Tubing, 5/16" x 7/16" OD, Clear	4720-111-35-34
Tubing, 5/16" ID x 1/2" OD, Flexible	4720-011-35-21
Tubing, 3/8" ID x 1/16" Wall, Clear	4720-601-22-00
Tubing, 3/8" OD, White Polypropylene	4720-011-50-49
Tubing, 5/8" ID with .125" Wall	4720-002-12-20
Tubing, 3/4" ID x 1/8" Wall, Polypropylene	4720-601-25-00
Tubing, 3/4" ID x 1-1/8" OD, Nylon	4720-001-84-01
Tubing, 1" Polybrade	4720-011-69-16
Tubing, 1" ID x 1-3/8" OD, Polypropylene	4720-601-23-00
Tubing, 1-1/2" Polybrade	4720-011-69-17

JACKSON MAINTENANCE & REPAIR CENTERS (USA)

ALABAMA

Jones-McLeod Appliance
1616 7th Avenue North
Birmingham, AL 35203
(205) 251-0159
(800) 821-1150
(205) 322-1440 fax

Jones-McLeod Appliance
854 Lakeside Drive
Mobile, AL 36693
(334) 666-7278
(800) 237-9859
(334) 661-0223 fax

ALASKA

Restaurant Appliance Service
7219 Roosevelt Way NE
Seattle, WA 98115
(206) 524-8200
(800) 433-9390
(206) 525-2890 fax

ARIZONA

GCS Service, Inc. #78
5052 South 40th Street
Phoenix, AZ 85040
(602) 474-4510
(800) 510-3497
(602) 470-4511 fax

Authorized Commercial Food Equipment Service
4832 South 35th St.
Phoenix, AZ 85040
(602) 234-2443
(800) 824-8875
(602) 232-5862 fax

ARKANSAS

Bromely Parts & Service
10th & Ringo
P.O. Box 1688
Little Rock, AR 72202
(501) 374-0281
(800) 482-9269
(501) 374-8352 fax

Commercial Parts & Service
3717 Cherry Road
Memphis, TN 38118
(901) 366-4587
(800) 262-9155
(901) 366-4588 fax

CALIFORNIA

P & D Appliance
4220-C Roseville Road
North Highlands, CA 95660
(916) 974-2772
(800) 824-7219
(916) 974-2774

CALIFORNIA (cont)

P & D Appliance
100 South Linden Avenue
S. San Francisco, CA 94080
(650) 635-1900
(800) 424-1414
(650) 635-1919 fax

Barkers Food Machinery Equipment
5367 Second Street
Irwindale, CA 91706
(626) 960-9390
(800) 258-6999
(626) 337-4541 fax

GCS Service, Inc. #24
1100 East Pico Blvd
Los Angeles, CA 90021
(213) 683-2090
(800) 327-1433
(213) 683-2099 fax

GCS Service, Inc. #24
650 S. Grand Avenue
Suite 111
Santa Ana, CA 92705
(714) 542-1798
(800) 540-0719
(714) 542-4787 fax

GCS Service, Inc. #52
360 Littlefield
S. San Francisco, CA 94080
(650) 635-0720
(800) 969-4427
(650) 871-4019 fax

GCS Service, Inc. # 84
9030 Kenamar Drive
Suite 313
San Diego, CA 92121
(858) 549-8411
(800) 422-7278
(858) 549-2323 fax

COLORADO

GCS Service, Inc. #60
4251 S. Natches Ct.
Unit C
Sheridan, Co 80110
(303) 371-9054
(800) 972-5314

Metro Appliance Service
1640 South Broadway
Denver, CO 80210
(303) 778-1126
(800) 525-3532
(303) 778-0268 fax

CONNECTICUT

GCS Service, Inc. #06
302 Murphy Road
Hartford, CT 06114
(860) 549-5575
(800) 423-1562
(860) 527-6355 fax

DELAWARE

Food Service Equipment
2101 Parkway South
Broomall, PA 19008
(610) 356-6900
(610) 356-2038 fax

GCS Service, Inc. #44
817 N. Third Street
P.O. Box 3564
Philadelphia, PA 19123
(215) 925-6217
(800) 441-9115
(215) 925-6208 fax

Elmer Schultz Service
36 Belmont Ave.
Wilmington, DE 19804
(302) 655-8900
(800) 225-0599
(302) 656-3673 fax

EMR Service Division
106 Williamsport Circle
Salisbury, MD 21804
(410) 543-8197
(410) 543-4038 fax

FLORIDA

GCS Service, Inc. #15
3373 N. W. 168th Street
Miami, FL 33056
(305) 621-6666
(800) 766-8966
(305) 621-6656 fax

Commercial Appliance Service
8416 Laurel Fair Circle
Building 6, Suite 114
Tampa, FL 33610
(813) 663-0313
(800) 282-4718
(813) 663-0212 fax

GCS Service, Inc. #14
3902 Corporex Park Drive
Suite 350
Tampa, FL 33619
(813) 626-6044
(800) 282-3008
(813) 621-1174

JACKSON MAINTENANCE & REPAIR CENTERS (USA)

FLORIDA (cont)

GCS Service, Inc. # 13
4305 Vineland Road
Suite G-12
Orlando, FL 32811
(407) 841-2551
(800) 338-7322
(407) 423-8425 fax

Jones-McLeod Appliance
854 Lakeside Drive
Mobile, AL 36693
(334) 666-7278
(800) 237-9859
(334) 661-0223 fax

GEORGIA

GCS Service, Inc. #16
3127 Presidential Dr.
Atlanta, GA 30340
(770) 452-7322
(300) 334-3599
(770) 452-7473 fax

**Southeastern
Restaurant Service**
2200 Norcross Pkwy,
Suite 210
Norcross, GA 30071
(770) 446-6177
(800) 235-6516
(770) 446-3157 fax

Whaley Foodservice Repairs
109-A Owens Industrial Drive
Savannah, GA 31405
(912) 447-0827
(888) 765-0036
(912) 447-0826 fax

HAWAII

**Food Equipment Parts &
Service Co.**
300 Puuhale Road
Honolulu, HI 96819
(808) 847-4871
(808) 842-1560 fax

IDAHO

Ron's Service
703 E. 44th Street, Suite 10
Garden City, ID 83714
(208) 375-4073
(208) 375-4402 fax

Restaurant Appliance Service
7219 Roosevelt Way Ne
Seattle, WA 98115
(206) 524-8200
(800) 433-9390
(206) 525-2890 fax

ILLINOIS

GCS Service Inc. #12
696 Larch Avenue
Elmhurst, IL 60126
(630) 941-7800
(800) 942-9689
(630) 941-6048 fax

Cone's Repair Service
2408 40th Avenue
Moline, IL 61265
(309) 797-5323
(800) 716-7070
(309) 797-3631 fax

Eichenauer Services, Inc.
130 S. Oakland Street
Decatur, IL 62522
(217) 429-4229
(800) 252-5892
(217) 429-0226 fax

GCS Service, Inc. #80
9722 Reavis Park Drive
St. Louis, MO 63123
(314) 638-7444
(800) 284-4427
(314) 638-0135 fax

INDIANA

Commercial Parts and Service
5310 E. 25th Street
Indianapolis, IN 46218
(317) 545-9655
(800) 727-8710
(317) 549-6286 fax

IOWA

Goodwin-Tucker Group
3509 Delaware Avenue
Des Moines, IA 50313
(515) 262-9308
(800) 372-6066
(515) 262-2936 fax

Cone's Repair Service
1056 27th Ave. SW
Cedar Rapids, IA 52404
(319) 365-3325
(800) 747-3326
(319) 365-0885 fax

KANSAS

GCS Service Inc. #82
6107 Connecticut
Kansas City, MO 64120
(816) 920-5999
(800) 229-6477
(816) 920-7387 fax

KENTUCKY

Certified Service Center
Ramco Business Park
4283 Produce Road
Louisville, Ky 40218
(502) 964-7007
(800) 637-6350
(502) 964-7202 fax

Commercial Parts & Service
4204 South Brook Street
Louisville, KY 40214
(502) 367-1788
(800) 752-6160
(502) 367-0400 fax

Certified Service Center
1051 Goodwin Drive
Lexington, KY 40505
(606) 254-8854
(800) 432-9269
(606) 231-7781 fax

Commercial Parts & Service
1002 Nandino Blvd.
Lexington, KY 40511
(606) 255-0746
(800) 432-9260
(606) 255-0748 fax

LOUISIANA

Bana Parts, Inc.
1501 Kueble Street
Harahan, LA 70123
(504) 734-0076
(800) 325-7543
(504) 734-8456 fax

Bana Parts, Inc.
4028 Greenwood Road
Shreveport, LA 71109
(318) 631-6550
(800) 832-6550
(318) 636-5675 fax

MAINE

GCS Service, Inc. #09
180 Second Street
Chelsea, MA 02150
(617) 889-9393
(800) 225-1155
(617) 889-1222 fax

**Massachusetts Restaurant
Supply**
34 South Street
Somerville, MA 02143
(617) 868-1930
(800) 338-6737
(617) 868-5331 fax

JACKSON MAINTENANCE & REPAIR CENTERS (USA)

MARYLAND

GCS Service, Inc. #07
2660 Pittman Drive
Silver Spring, MD 20910
(301) 585-7550 (DC)
(410) 792-0388 (Balt)
(800) 638-7278
(301) 495-4410 fax

EMR Service Division
700 East 25th Street
Baltimore, MD 21218
(410) 467-8080
(800) 879-4994
(410) 467-4191 fax

EMR Service Division
106 Willamsport Circle
Salisbury, MD 21804
(410) 543-8197
(888) 687-8080
(410) 548-4038 fax

EMR Service Division
2626 Pittman Drive
Silver Spring, MD 20910
(301) 588-8080
(800) 348-2365
(301) 588-6985 fax

MASSACHUSETTS

GCS Service, Inc. #09
180 Second Street
Chelsea, MA 02150
(617) 889-9393
(800) 225-1155
(617) 889-1222 fax

Massachusetts Restaurant Supply
34 South Street
Somerville, MA 02143
(617) 868-1930
(800) 338-6737
(617) 868-5331 fax

Ace Service Co.
95 Hampton Avenue
Needham, MA 02494
(781) 449-4220
(800) 225-4510 MA & NH
(781) 444-4789 fax

GCS Service, Inc. #06
302 Murphy Road
Hartford, CT 06114
(860) 549-5575
(800) 723-1562
(860) 527-6355 fax

MICHIGAN

GCS Service, Inc. #20
31829 West Eight Mile Road
Livonia, MI 48152
(248) 426-9500
(800) 772-2936
(248) 426-7555 fax

GCS Service, Inc. #21
3516 Roger B Chaffe SE
Grand Rapids, MI 49548
(248) 426-9500
(800) 772-2936
(248) 426-7555 fax

Jackson Service
3980 Benstein Road
Commerce Township, MI 48382
(248) 363-4159
(800) 332-4053
(248) 363-5448 fax

MINNESOTA

GCS/Metro Service, Inc.
2857 Louisiana Avenue N.
Minneapolis, MN 55427
(612) 546-4221
(800) 345-4221
(612) 546-4286 fax

MISSISSIPPI

Commercial Parts & Service
5755 Gallant Drive
Jackson, MS 39206
(601) 956-7800
(800) 274-5954
(601) 956-1200 fax

Commercial Parts & Service
3717 Cherry Road
Memphis, TN 38118
(901) 366-4587
(800) 262-9155
(901) 366-4588 fax

MISSOURI

GCS Service, Inc. #82
6107 Connecticut
Kansas City, MO 64120
(816) 920-5999
(800) 229-6477
(816) 920-7387 fax

GCS Service, Inc. # 80
9722 Reavis Park Drive
St. Louis, MO 63123
(314) 638-7444
(800) 284-4427
(314) 638-0135 fax

MISSOURI (cont)

Kammerlin Parts & Service
2728 Locust Street
St. Louis, MO 63103
(314) 535-2222
(314) 535-6205 fax

MONTANA

Restaurant Appliance Service
7219 Roosevelt Way NE
Seattle, WA 98115
(206) 524-8200
(800) 433-9390
(206) 525-2890 fax

NEBRASKA

Goodwin-Tucker Group
815 N. 19th Street
Omaha, NE 68102
(402) 345-7400
(800) 228-0342
(402) 346-6145 fax

NEVADA

GCS Service, Inc. #77
3585 East Patrick Lane
Suite 1000
Las Vegas, NV 89102
(702) 450-3495
(800) 500-9060
(702) 450-3491 fax

Burney's Commercial Service
4480 Aldevaran Avenue
Las Vegas, NV 89103
(702) 736-0006
(702) 798-7531 fax

NEW HAMPSHIRE

GCS Service, Inc. #09
180 Second Street
Chelsea, MA 02150
(617) 889-9393
(800) 225-1155
(617) 889-1222 fax

Massachusetts Restaurant Supply
34 South Street
Somerville, MA 02143
(617) 868-1930
(800) 338-6737
(617) 868-5331 fax

Ace Service Co.
95 Hampton Avenue
Needham, MA 02494
(781) 449-4220
(800) 225-4510 MA & NH
(781) 444-4789 fax

JACKSON MAINTENANCE & REPAIR CENTERS (USA)

NEW JERSEY

Jackson Faspray Service
155 Sargeant Avenue
Clifton, NJ 07013
(973) 471-8000
(800) 356-6740
(973) 471-1289 fax

GCS Service, Inc. #44
817 N. Third Street
Philadelphia, PA 19123
(215) 925-6217
(800) 441-9115
(215) 925-6208 fax

GCS Service, Inc. #02
1 Madison ST., Bldg. F
E. Rutherford, NJ 07073
(973) 614-0003
(800) 399-8294
(973) 614-0320 fax

Food Service Equipment
2101 Parkway South
Broomall, PA 19123
(610) 356-6900
(610) 356-2038 fax

NEW MEXICO

Stove Parts Supply Co.
2120 Solana Street
Ft. Worth, TX 76117
(817) 831-0381
(800) 433-1804
(817) 834-7754 fax

NEW YORK

GCS Service, Inc. #01
932 Grand Street
Brooklyn, NY 11211
(718) 486-5220
(800) 969-4271
(718) 486-6772 fax

Duffy's Equipment Service
3138 Oneida Street
Sauquoit, NY 13456
(315) 737-9401
(800) 443-8339
(315) 737-7132 fax

B.E.S.T., Inc.
3003 Genesee Street
Buffalo, NY 14225
(716) 893-6464
(800) 338-5011
(716) 893-6466 fax

NEW YORK (cont)

Appliance Installation & Service Corp.
1336 Main Street
Buffalo, NY 14209
(716) 884-7425
(800) 722-1252
(716) 884-0410 fax

Northern Parts & Service
21 Northern Avenue
Plattsburgh, NY 12903
(518) 563-3200
(800) 634-5005
(800) 782-5424 fax

Jackson Faspray Service
155 Sargeant Avenue
Clifton, NJ 07013
(973) 471-8000
(800) 356-6740
(973) 471-1289 fax

NORTH CAROLINA

Whaley Foodservice Repairs
8334-K Arrowridge Blvd.
Charlotte, NC 28273
(704) 529-6242
(704) 529-1558 fax

Whaley Foodservice Repairs
203-D Creek Ridge Road
Greensboro, NC 27406
(336) 333-2333
(336) 333-2533 fax

Whaley Foodservice Repairs
335-105 Sherwee Drive
Raleigh, NC 27603
(919) 779-2266
(919) 779-2224 fax

Whaley Foodservice Repairs
6418-101 Amsterdam Way
Wilmington, NC 28405
(910) 791-0000
(910) 791-6662 fax

NORTH DAKOTA

GCS/Metro Service Inc.
2857 Louisiana Avenue N.
Minneapolis, MN 55427
(612) 546-4221
(800) 345-4221
(612) 546-4286 fax

OHIO

Certified Service Center
890 Redna Terrace
Cincinnati, OH 45215
(513) 772-6600
(800) 543-2060
(513) 612-6600 fax

OHIO (cont)

Commercial Parts & Service of Columbus
1150 West Mound Street
Columbus, OH 43223
(614) 221-0057
(800) 837-8327
(614) 221-3622 fax

GCS Service, Inc.
2830 Johnstown Rd.
Columbus, OH 43219
(614) 476-3225
(800) 282-5406
(614) 476-1196 fax

Electrical Appliance Repair Service
5805 Valley Belt Road
Cleveland, OH 44131
(216) 459-8700
(800) 621-8259
(216) 459-8707 fax

OKLAHOMA

Krueger Inc.
100 NE 24th Street
Oklahoma City, OK 73105
(405) 528-8883
(800) 522-8069
(405) 528-5405 fax

Hagar Restaurant Equipment
1229 W. Main Street
Oklahoma City, OK 73106
(405) 235-2184
(800) 445-1791
(405) 236-5592 fax

OREGON

Ron's Service
16364 SW 72nd Ave.
Portland, OR 97224
(503) 624-0890
(800) 851-4118
(503) 684-6107 fax

PENNSYLVANIA

GCS Service, Inc. #44
817 N. Third Street
P.O. Box 3564
Philadelphia, PA 19123
(215) 925-6217
(800) 441-9115
(215) 925-6208 fax

Elmer Schultz Service
540 North 3rd Street
Philadelphia, PA 19123
(215) 627-5400
(215) 627-5408 fax

JACKSON MAINTENANCE & REPAIR CENTERS (USA)

PENNSYLVANIA (cont)

Food Service Equipment
2101 Parkway South
Broomall, PA 19008
(610) 356-6900
(610) 356-2038

A.I.S. Commercial Parts & Service
1816 West 26th Street
Erie, PA 16508
(814) 456-3732
(800) 332-3732
(814) 452-4843 fax

GCS Service, Inc. #44
4400 Lewis Road, Suite E
Harrisburg, PA 17111
(717) 564-3282
(800) 367-3225
(717) 564-9286 fax

K & D Parts & Service
1833-41 N. Cameron Street
Harrisburg, PA 17103
(717) 236-9039
(800) 932-0503
(717) 238-4367 fax

AFS-Authorized Factory Service, Co.
940 First Avenue
Coraopolis, PA 15108
(412) 262-2330
(800) 222-8767
(412) 262-2245 fax

GCS Service, Inc. #48
210 Vista park Drive
Pittsburgh, PA 15205
(412) 787-1970
(800) 738-1221
(412) 787-5005 fax

RHODE ISLAND

GCS Service, Inc. #90
1002 Waterman Ave.
E. Providence, RI 02914
(401) 434-6803
(800) 462-6012
(401) 438-9400 fax

SOUTH CAROLINA

Whaley Foodservice Repairs
I-26 & US1
P.O. Box 4023
West Columbia, SC 29170
(803) 791-4420
(800) 877-2662
(803) 794-4630 fax

SOUTH CAROLINA (cont)

Whaley Foodservice Repairs
748 Congaree Road
Greenville, SC 29607
(864) 234-7011
(800) 494-2539
(864) 234-6662 fax

Whaley Foodservice Repairs
1406-C Commerce Pl.
Myrtle Beach, SC 29577
(843) 626-1866
(843) 626-2632 fax

Whaley Foodservice Repairs
4740-A Franchise St.
N. Charleston, SC 29418
(843) 760-2110
(843) 760-2255 fax

SOUTH DAKOTA

Metro Commercial Service, Inc.
2857 Louisiana Avenue N.
Minneapolis, MN 55427
(612) 546-4221
(800) 345-4221
(612) 546-4286 fax

TENNESSEE

Commercial Parts & Service
3717 Cherry Road
Memphis, TN 38118
(901) 366-4587
(800) 262-9155
(901) 366-4588 fax

Commercial Parts & Service
748 Fesslers Lane
Nashville, TN 37210
(615) 244-8050
(800) 831-7174
(615) 244-8885 fax

Commercial Appliance Service
919 8th Ave. South
Nashville, TN 37203
(615) 254-0906
(800) 476-0906
(615) 254-0919 fax

TEXAS

GCS Service, Inc. #90
10850 Sanden Drive
Dallas, TX 75238-5325
(972) 484-2954
(800) 422-5026
(972) 484-2531 fax

TEXAS (cont)

Stove Parts Supply Co.
2120 Solana Street
Ft. Worth, TX 76117
(817) 831-0381
(800) 433-1804
(817) 834-7754 fax

GCS Service, Inc. #88
8150 Westpark
Houston, TX 77081
(713) 785-9187
(800) 868-6957
(713) 785-3979 fax

Armstrong Repair Center
5110 Glenmont Dr.
Houston, TX 77081
(713) 666-7100
(800) 392-5325
(713) 661-0520 fax

Commercial Kitchen Repair
1377 N. Brasos
P.O. Box 831128
San Antonio, TX 78207
(210) 735-2811
(800) 292-2120
(210) 735-7421 fax

UTAH

Lamonica's Restaurant Equipment Service
6182 S. Stratler Avenue
Murray, UT 84107
(801) 263-3221
(800) 527-2561
(801) 263-3229 fax

VERMONT

Authorized Appliance Servicer of Vermont
74 River Street
Rutland, VT 05701
(802) 775-5588
(800) 874-1080
(802) 775-9593 fax

Northern Parts & Service
4874 S. Catherine Street
Plattsburg, NY 12901
(518) 563-3200
(800) 634-5005
(800) 782-5424 fax

GCS Service, Inc. #09
180 Second Street
Chelsea, MA 02150
(617) 889-9393
(800) 225-1155
(617) 889-1222 fax

JACKSON MAINTENANCE & REPAIR CENTERS (USA)

VIRGINIA

GCS Service, Inc. #18
5760 Northampton Blvd.
Suite 106
Virginia Beach, VA 23455
(757) 464-3500
(800) 476-4278
(757) 464-4106 fax

GCS Service, Inc. #07
2660 Pittman Drive
Silver Spring, MD 20910
(301) 585-7550 (DC)
(410) 792-0388 (Balt)
(800) 638-7278
(301) 495-4410 fax

GCS Service, Inc. #18
2421 Grenoble Road
Richmond, VA 23294
(804) 672-1700
(800) 899-5949
(804) 672-2888 fax

Daubers, Inc.
7645 Dynatech Court
Springfield, VA 22153
(703) 866-3600
(800) 554-7788
(703) 866-4071 fax

WASHINGTON

Restaurant Appliance Service
7219 Roosevelt Way NE
Seattle, WA 98115
(206) 524-8200
(800) 433-9390
(206) 525-2890

WEST VIRGINIA

AFS-Authorized Factory Service, Inc.
Rt.-1 Box 288
S. Charleston, WV 25312
(304) 344-8225
(800) 654-4606
(304) 344-8248 fax

WISCONSIN

Appliance Service Center, Inc.
2439 Atwood Avenue
Madison, WI 53704
(608) 246-3160
(800) 236-7440
(608) 246-2721 fax

Appliance Service Center, Inc.
6843 W. Belloit Road
West Allis, WI 53219
(414) 543-6460
(800) 236-6460
(414) 543-6480 fax

WISCONSIN (cont)

Appliance Service Center, Inc.
786 Morris Ave.
Green Bay, WI 54304
(920) 496-9993
(800) 236-0871
(920) 496-9927 fax

WYOMING

Metro Appliance Service
1640 South Broadway
Denver, CO 80210
(303) 778-1126
(800) 525-3532
(303) 778-0268 fax

JACKSON MAINTENANCE & REPAIR CENTERS (CANADA)

Kontac Industries

6504 South Broadway
Edmonton, AB T6B0E7
(780) 469-4869
(800) 661-2500
(780) 465-6937 fax

Key Food Equipment Services

#105-3728 North Fraser Way
Burnaby, BC V5J5G1
(604) 433-4484
(800) 665-2655
(604) 433-4684 fax

Choquette - CKS

2710 Lancaster Road
Unit 119
Ottawa, OT K1B4T7
(613) 739-8458
(800) 267-2515
(613) 739-3851 fax

Kontac Industries

6271-15 Dorman Road
Mississauga, OT L4V1H1
(905) 677-1580
(800) 661-2500
(905) 677-2863 fax

Choquette - CKS

8487 19th Avenue
Montreal, QU H1Z4J2
(514) 722-2000
(800) 361-7681 (Quebec)
(514) 722-5050 fax

**Service D'Equipment de
Cuisine Entretien**

893 King O
Sherbrooke, QU J1H1R9
(819) 821-2153
(819) 821-4015 fax

**A.A. Dot (Service
d'Entretien)**

15 St. Alphonse
Ste. Therese, QU J731G3
(450) 435-7736
(450) 435-5249 fax

Choquette - CKS

900 Pierre Bertrand
Suite 220
Vanier, QU G1M3k2
(418) 681-3944
(800) 463-5506
(418) 681-3385 fax

