

# **SERVICE MANUAL**

**FOR JACKSON MODEL:**

**MODEL 24B/BF  
AUTOMATIC DISHWASHER**

**AFTER SERIAL NO. 21800**



## **MANUFACTURERS WARRANTY**

### **ONE YEAR LIMITED PARTS & LABOR WARRANTY**

ALL NEW JACKSON DISHWASHERS ARE WARRANTED TO THE ORIGINAL PURCHASER TO BE FREE FROM DEFECTS IN MATERIAL OR WORKMANSHIP, UNDER NORMAL USE AND OPERATION FOR A PERIOD OF (1) ONE YEAR FROM THE DATE OF PURCHASE, BUT IN NO EVENT TO EXCEED (18) EIGHTEEN MONTHS FROM THE DATE OF SHIPMENT FROM THE FACTORY.

Jackson MSC agrees under this warranty to repair or replace , at its discretion, any original part which fails under normal use due to faulty material or workmanship during the warranty period, providing the equipment has been unaltered, and has been properly installed, maintained and operated in accordance with the applicable factory instruction manual furnished with the machine and the failure is reported to the authorized service agency within the warranty period. This includes the use of factory specified genuine replacement parts, purchased directly from a Jackson authorized parts distributor or service agency. Use of generic replacement parts may create a hazard and void warranty certification.

The labor to repair or replace such failed part will be paid by Jackson MSC, within the continental United States, Hawaii and Canada, during the warranty period provided a Jackson MSC authorized service agency, or those having prior authorization from the factory, performs the service. Any repair work by persons other than a Jackson MSC authorized service agency is the sole responsibility of the customer. Labor coverage is limited to regular hourly rates, overtime premiums and emergency service charges will not be paid by Jackson MSC.

Accessory components not installed by the factory carry a (1) one year parts warranty only. Accessory components such as table limit switches, pressure regulators, pre rinse units, etc. that are shipped with the unit and installed at the site are included. Labor to repair or replace these components is not covered by Jackson MSC.

This warranty is void if failure is a direct result from shipping, handling, fire, water, accident, misuse, acts of god, attempted repair by unauthorized persons, improper installation, if serial number has been removed or altered, or if unit is used for purpose other than it was originally intended.

#### **TRAVEL LIMITATIONS**

Jackson MSC limits warranty travel time to (2) two hours and mileage to (100) one hundred miles. Jackson MSC will not pay for travel time and mileage that exceeds this, or any fees such as those for air or boat travel without prior authorization.

#### **WARRANTY REGISTRATION CARD**

The warranty registration card supplied with the machine must be returned to Jackson MSC within 30 days to validate the warranty.

#### **REPLACEMENT PARTS WARRANTY**

Jackson replacement parts are warranted for a period of 90 days from the date of installation or 180 days from the date of shipment from the factory, which ever occurs first.

#### **PRODUCT CHANGES AND UPDATES**

Jackson MSC reserves the right to make changes in design and specification of any equipment as engineering or necessity requires.

THIS IS THE ENTIRE AND ONLY WARRANTY OF JACKSON MSC. JACKSON'S LIABILITY ON ANY CLAIM OF ANY KIND, INCLUDING NEGLIGENCE, WITH RESPECT TO THE GOODS OR SERVICES COVERED HEREUNDER, SHALL IN NO CASE EXCEED THE PRICE OF THE GOODS OR SERVICES OR PART THEREOF WHICH GIVES RISE TO THE CLAIM.

THERE ARE NO WARRANTIES, EXPRESSED OR IMPLIED, INCLUDING FOR FITNESS OR MERCHANTABILITY, THAT ARE NOT SET FORTH HEREIN, OR THAT EXTEND BEYOND THE DURATION HEREOF. UNDER NO CIRCUMSTANCES WILL JACKSON MSC BE LIABLE FOR ANY LOSS OR DAMAGE, DIRECT OR CONSEQUENTIAL, OR FOR THE DAMAGES IN THE NATURE OF PENALTIES, ARISING OUT OF THE USE OR INABILITY TO USE ANY OF ITS PRODUCTS.

#### **ITEMS NOT COVERED**

This warranty does not cover cleaning or deliming of the unit or any component such as, but not limited to, wash arms, rinse arms or strainers at anytime. Nor does it cover adjustments such as, but not limited to timer cams, thermostats or doors, beyond 30 days from the date of installation. In addition, the warranty will only cover the replacement of wear items such as curtains, drain balls, door guides or gaskets during the first 30 days after installation. Also, not covered are conditions caused by the use of incorrect (non-Commercial) grade detergents, incorrect water temperature or pressure, or hard water conditions.

# INDEX

WARRANTY .....	Inside Front Cover
SPECIFICATIONS .....	2
ELECTRICAL RATING .....	2
GENERAL INSTRUCTIONS (Installation) .....	3
GENERAL INSTRUCTIONS (Operation) .....	6
GENERAL INSTRUCTIONS (Preventive Maintenance) .....	7
REMOVAL of RINSE and/or WASH HEAD ASSEMBLIES	
(General Instructions) .....	8
TIMER for MODEL 24 DISHWASHERS .....	10
DEFECTIVE TIMER MOTOR .....	11
FUNCTION of SWITCHES, CIRCUIT BREAKER	
and INDICATING LIGHTS .....	12
THERMOSTAT ADJUSTMENT .....	13
RINSE TANK HEATER SYSTEM .....	14
WASH TANK HEATER SYSTEM .....	16
WATER LEVEL CONTROL .....	17
SERVICE INSTRUCTIONS (Incoming Water Solenoid Valve) .....	18
SEAL and CERAMIC for PUMP SYSTEM	
(General Information) .....	19
TROUBLE SHOOTING GUIDE .....	20
PICTORIALS:	
FRONT VIEW .....	23
BACK VIEW .....	24
LEFT SIDE VIEW .....	25
RIGHT SIDE VIEW .....	26
PAN STRAINER, VACUUM BREAKER, DOOR SWITCH	
and LATCH ASSEMBLY, INCOMING PLUMBING .....	27
RINSE TANK, WASH ASSEMBLY, WASH or RINSE	
THERMOSTAT, WASH or RINSE THERMOMETER .....	28
BOOSTER TANK HEATER ELEMENT, ELEMENT	
GASKET, THERMOSTATIC OVERLOAD .....	29
PUMP and MOTOR ASSEMBLY .....	30
DRAIN VALVE, CUTAWAY VIEW, PANEL .....	31
WIRING DIAGRAMS .....	32
TIMING CHART .....	34
COMPLETE PARTS LIST for MODEL 24 .....	35
PARTS DISTRIBUTORS .....	Inside Back Cover

# SPECIFICATIONS

## JACKSON DISHWASHER MODEL 24 B - BF\*

OPERATING CAPACITY 100%	24	24B
Racks per hour	21	21
Dishes per hour	525	525
Glasses per hour	525	525

OPERATING CYCLE		
Wash Time — seconds	121	121
Rinse Time — seconds	15	15
Total Cycle — seconds	145	145

WASH TANK CAPACITY (Gallons)	5.65	5.65
RINSE TANK CAPACITY (Gallons)	N/A	3
WASH PUMP CAPACITY (GPM)	60	60

WATER REQUIREMENTS 100%		
Inlet Temperature °F	180°	140°
Gallons per hour	52.3	52.3
Flow Pressure, PSI	20	20
Flow, gallons per minute	7.1	7.1
Inlet size — IPS	½"	½"
Drain size — O.D.	1½"	1½"

WASH PUMP MOTOR (HP)	½	½
----------------------	---	---

WASH HEATER (kw)	1.0	1.0
RINSE HEATER (kw)	N/A	6.2

ELECTRICAL REQUIREMENTS (See below for details, under Electrical Rating)

DIMENSIONS	
Height, with Top	36"
Height, with no Top	34½"
Width	24"
Clearance, Wall to Machine	2¼"
Depth	24"
Maximum Height for Dishes	14"
Rack Size	19¾"

NOTE VENTED BACK

\*ALL 'F' MODELS ARE FREE STANDING (Top and Side Panels)

## ELECTRICAL RATING

MODEL	VOLTS	CYCLE	PHASE	TOTAL LOAD AMPS
24B	115/208-230	60	1	38
24	115	60	1	16

Specifications subject to change without notice.

# GENERAL INSTRUCTIONS

## (INSTALLATION)

**Note:** Read the following instructions carefully, Proper installation of your Jackson Dishwasher will assure proper machine operation.

### Uncrating 24:

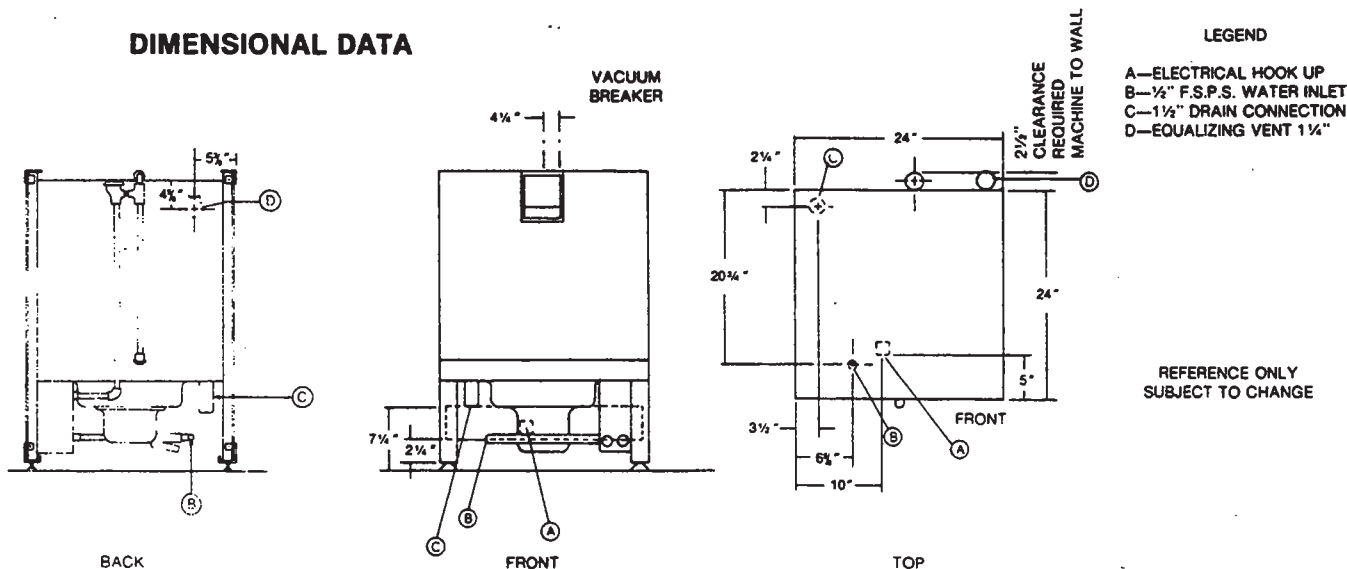
1. Remove straps around carton.
2. Open top flaps of dishwasher carton.
3. Remove any packing from top and sides of machine that can be done with ease from top.
4. Slide carton sleeve upward over top of dishwasher, set to one side.
5. Lift dishwasher and wooden base from carton base.
6. Move dishwasher to general installation area.
7. Remove bolts holding wooden base to machine and screw in adjustable feet supplied.
8. Reassemble wash and rinse assemblies in machine using sketch and instructions in this manual.
9. Set dishwasher in place, ready for installation.

**Note:** NSF base cradle installation must be field installed on all AF and BF models. Cradle goes around bottom; secure in place using liquid adhesive.

### Installation Instructions:

1. The dishwasher can be leveled to the proper height by adjusting the adjustable feet on the four corners. The front of the unit should be  $\frac{1}{4}$ " to  $\frac{1}{2}$ " higher than the back.
2. Refer to the dimensional data sketch for connections.
3. The drain from the machine is a GRAVITY DRAIN SYSTEM and should, therefore, have the proper drop from the machine to the kitchen's drain system. The drain connection is located to the left rear of the machine when facing the machine's door. The drain fitting is  $1\frac{1}{2}$ " OD tube size, 7" from floor.
4. **IMPORTANT-PLEASE READ-**Located on the back upper left corner of this unit is a steam equalizing vent. This vent in no way should be blocked off or prevented from allowing steam to be vented to the outside of the unit or from under the cabinet in which the unit is installed. Never pipe the steam downward toward the floor. (SEE PAGE 4 IF BEING INSTALLED UNDER A COUNTER.)
5. The electrical connections should be made to the terminal board located at the left center front. The terminals are marked L1, and Neutral. **Install proper circuit breaker, wire and conduit size to conform with local and/or national codes (standards).**

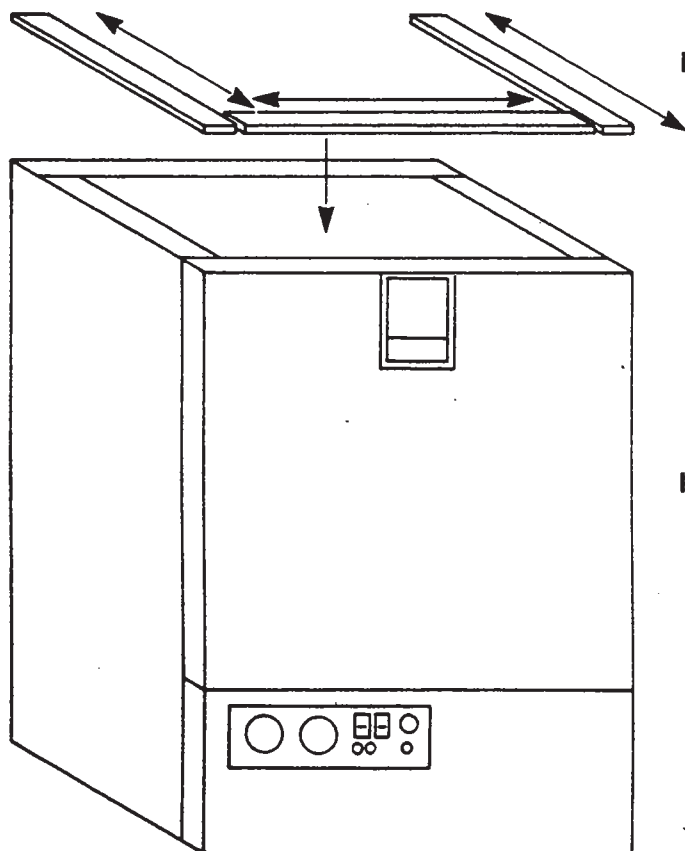
### DIMENSIONAL DATA



### Installation of Model 24 Top and Table gasket:

These instructions are to be used for applying the adhesive backed sponge rubber strip to the top of the machine prior to setting the table in place.

Included with the Model 24 table is a 6 foot length of ¼" thick x 1" wide sponge rubber adhesive backed stripping.



#### Instructions for applying gasket:

1. Place one end of the stripping along the complete side of the leg support flange and cut it off.
2. Repeat the same procedure along the other side.
3. Place the remaining piece along the front edge, fit it in between the side pieces and cut it to length.
4. Remove the backing and set the strips in place.

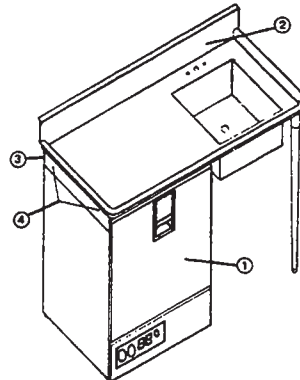
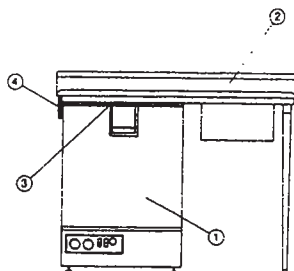
#### Instructions for installation under a porous counter top:

1. If possible, a hole should be cut through the counter top directly above the equalizing vent. A piece of 1¼" OD pipe is then inserted through the hole into the vent opening and piped to the outside.
2. If cutting a hole in the counter is not possible, then a piece of stainless steel 36" wide by 36" long bend in the middle at 90° should be centered directly over the vent to allow the steam to condensate on it when it comes out of the vent.
3. It is very important that this vent be kept open and cool air allowed to circulate around the unit.

### Installation of Model 24 Dishwasher Under Dishtable:

1. On the end of the table, locate bracket #4 opposite the sink end.
2. A square rubber gasket #3 is supplied and should be secured to top frame of dishwasher with caulk or suitable adhesive.
3. Place dishtable #2 where it is to be installed and support the machine's end.
4. Slide dishwasher #1 underneath dishtable #2 so that the outside of machine is positioned against the guide bracket #4. Make sure dishtable and dishwasher are in desired permanent location.

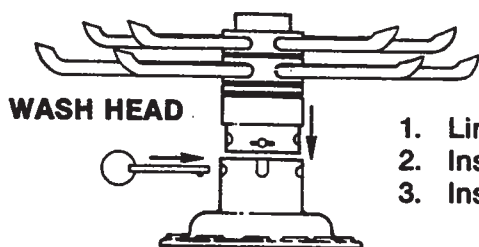
- Using the two holes in bracket #4 as a guide, drill two holes  $\frac{3}{4}$ " diameter in the side panel of machine. **Note: Drill through first thickness of metal only.**
- Using the self-tapping screws supplied, screw them through bracket #4 and into the side panel of machine until screws are tight.



**Removal of Pan Strainer for Cleaning:** (Wash and rinse head assemblies must be removed prior to removing strainer.)

- Turn heat switch 'off' and drain machine by depressing drain switch for approximately 50 seconds.
- Remove wing nut from rinse feed pipe, remove rinse head assembly by pulling forward.
- Remove wing nut from upper pump housing, wash head may now be lifted out.
- Pan strainer now accessible, lift out and clean thoroughly.
- Clean around pump intake with bristle brush.
- Replace strainer pan.
- Re-install wash and rinse head assemblies.
- Clean strainer pan daily or as needed to insure proper machine operation.

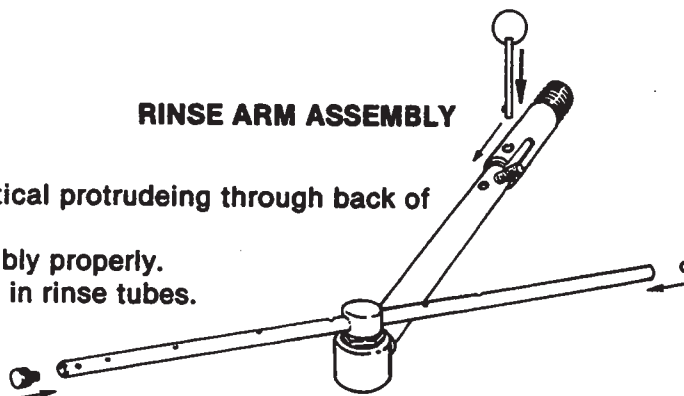
**Installation of Wash Head and Rinse Arm Assemblies:** (Items disassembled for shipment)



- Line holes up on wash head assembly to match slots in pump housing.
- Insert wash head assembly down into upper pump housing as far as possible.
- Insert retaining pin to secure wash head to pump housing.

**RINSE ARM ASSEMBLY**

- Line up stud to match with slot in nipple.
- Insert rinse arm assembly into female receptical protruding through back of machine.
- Insert lanyard pin to secure rinse arm assembly properly.
- Make certain end plugs are secured properly in rinse tubes.





# GENERAL INSTRUCTIONS

## (OPERATION)

**Note:** Read the following instructions carefully. Proper operation of your Jackson Dishwasher will assure clean and sanitized glasses and dishes, at optimum efficiency.

### Dish Preparation:

1. Scrape dishes thoroughly.
2. Pre-wash dishes by soaking or with hose.
3. Place dishes and cups in dish rack, cups upside down.
4. Place glasses and silverware in combination glass-silverware rack, glasses upside down. Scatter silverware loosely on bottom.

**Note:** Silverware in the upright position washes and rinses better than lying flat. These silverware compartment racks are available through your dealer or Service Agency.

### 24B/BF Operating Instructions:

1. Install pan strainer and the wash and rinse arms. Insert an empty rack, close the door and push till the handle latches.
2. Push the on/fill-off/drain switch to the up "on/fill" position. The machine power light will come on and so will the rinse heaters. The machine will begin to fill automatically and stop by itself.
3. After the machine has completed filling, open the door and put in a rack of soiled dishes and close the door (the machine door must remain open for a minimum of 5 seconds to allow the timer to reset.)
4. After the door has been closed, the cycle light will come on. There will be a 4 second delay before the wash cycle begins.
5. The machine will wash for 120 seconds and rinse for 15 seconds. After the cycle has finished, the cycle light will go out.
6. Open the door and remove the sanitized dishes. The machine is ready for another cycle.
7. To manually wash, push the manual wash switch to the up "on" position. The machine will wash indefinitely. This function can also be used as a delime. To resume normal operation, push the manual wash switch to the down "off" position.
8. To drain the machine, close the door and latch. Push the on/fill-off/drain switch to the "off/drain" position. This must be done within 4 seconds after closing the door or else the machine will begin another normal cycle.
9. After machine has drained, the cycle light will remain on for 1 minute and 30 seconds. This allows the timer to reset for the next meal period.
10. Open the door, remove and clean the pan strainer and wash arm.
11. Wash heater protection is provided by two means. Primary protection is given by the water level control which senses the water level with a probe. If this should fail due to excessive build up on the probe, the secondary thermal protection will cut out the wash heater before damage occurs.
12. When the secondary heater protection has been used, it will be indicated by the illuminated red reset light. The following steps are necessary in this situation:
  - a. Turn off power supply.
  - b. Open the door and remove the wash and rinse arms and the pan strainer.
  - c. Locate the two probes. One is in the wash sump on the left hand side and the other is on the front of the wash tub under the probe cover.
  - d. Using a deliming compound and a brush, clean both probes.
  - e. Reinstall the wash and rinse arms and the pan strainer.
  - f. Push the reset button located above the reset light.
  - g. Push on/fill-off/drain switch to the "on/fill" position. The machine should begin to fill. If it does not and the reset light comes on again, call an authorized service agency.

### Detergent Recommendations and Rinse Additives:

We suggest that you contact your local Detergent Specialist for the correct detergent and rinse additives for your area. To help you until one can be reached, we suggest that you use a non-foaming dishwasher detergent, approximately three tablespoons in wash tank when machine is filled and one teaspoon each cycle or load thereafter. This may have to be increased or decreased to obtain satisfactory results.



# **GENERAL INSTRUCTIONS**

## **(PREVENTIVE MAINTENANCE)**

**(THE FOLLOWING IS TO BE PERFORMED AS NEEDED.)**

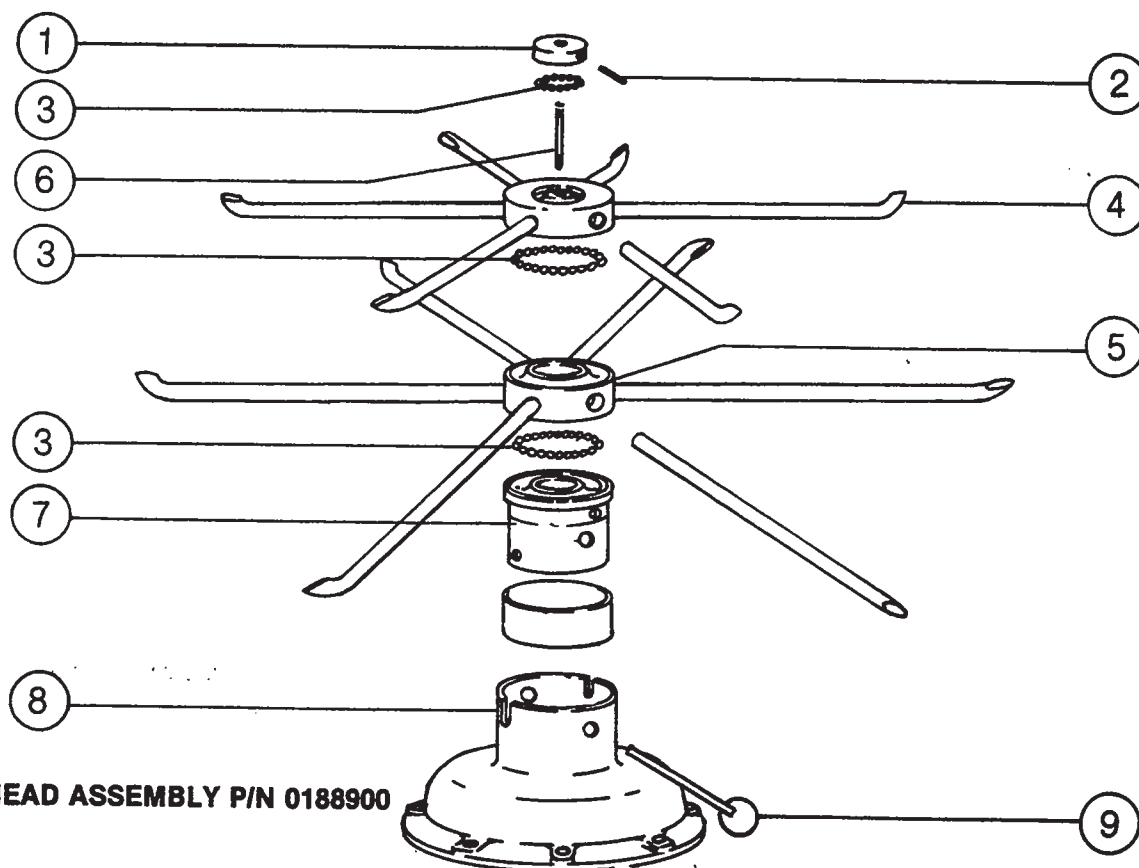
**Note: Read the following instructions carefully. Proper maintenance of your Jackson Dishwasher will ensure optimum service with a minimum of down time.**

- 1. Remove all lime and corrosion deposits.**
  - a. Fill the machine with wash water as would ordinarily be done for washing.
  - b. Open door and place one cup or less of de-liming compound into the water. The compound is available from your detergent supplier.
  - c. Turn on the manual wash switch and allow to wash for five minutes.
  - d. Open door and examine the interior. All lime should be removed and parts should be shiny. If not, allow to wash for longer period.
  - e. After the interior is clean, with door closed, empty the wash water by turning switch to the "off/drain" position. Refill machine and allow to run for two minutes, then again drain the wash reservoir.
- 2. Clean around overflow strainers and drain hole.**
  - a. Clean around overflow and strainer pan.
  - b. Clean around pump intake (toothbrush makes excellent tool for cleaning).
- 3. Clean Y-strainer on incoming water line. (Water to machine must be turned off for this operation)**
  - a. Remove plug and clean strainer.
- 4. Clean rinse tubes.**
  - a. Remove rinse assembly by disconnecting rinse feed pipe and removing end plugs on lower rinse.
  - b. Clean all rinse tubes and feed pipes with special brush supplied.
  - c. If spray holes in the rinse tubes are clogged, they may be cleaned with a pointed object.
- 5. Clean wash head assembly.**
  - a. Remove pin holding wash head assembly to pump.
  - b. Clean assembly at sink by flushing water through spray jets.
  - c. If spray jets are still plugged, use sharp object to dislodge and flush again.
  - d. Reinstall wash and rinse assemblies. (See page with instructions.)
- 6. Clean any deposits which may have built up on exterior moving parts.**
  - a. Clean around door gasket.
  - b. Using a soft bristle brush, clean around switches on exterior of control panel. (Use no water.)
  - c. Use soft bristle brush, dip in wash tank water and scrub inside door around gasket and hinges. Use clean cloth or paper towel to wipe off loose residue.

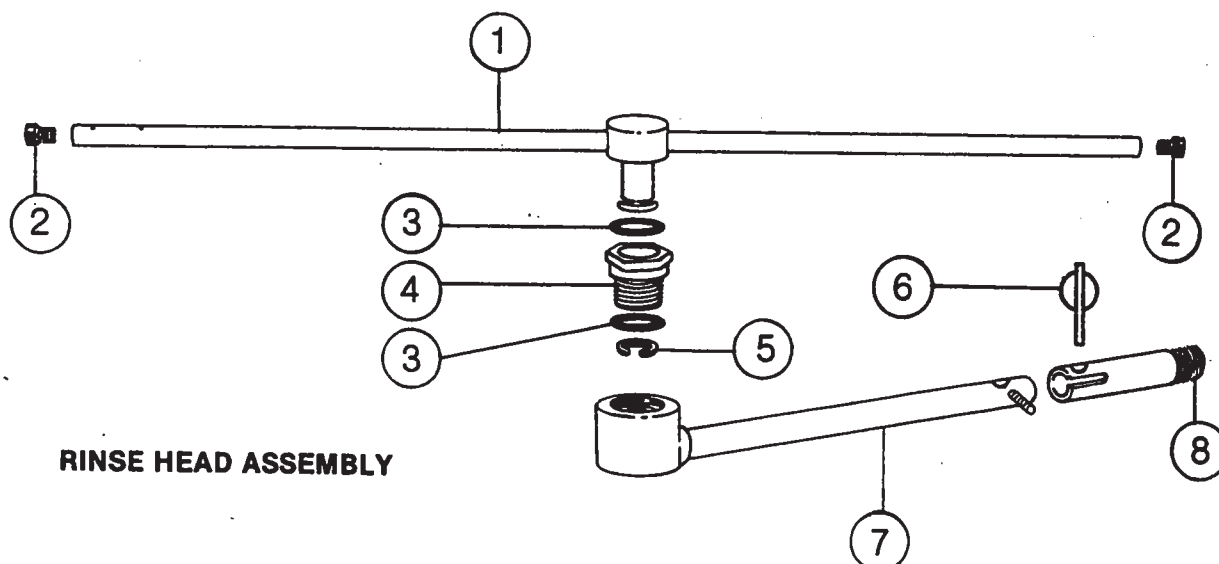
# **REMOVAL of RINSE and/or WASH HEAD ASSEMBLIES**

## **(GENERAL INSTRUCTIONS)**

1. Drain unit by placing switch in the off/drain position.
2. Open the door and allow the unit a few minutes to cool off.
3. Remove the pin holding the rinse feed pipe. Pull the feed pipe out of the nipple and lay it to one side.
4. Remove wash head assembly by pulling out the holding pin and lifting assembly. Place the wash head on a table for disassembly.
5. Locate Allen head set screw in the wash head cap, insert Allen wrench and loosen screw by turning counterclockwise.
6. Turn wash head cap counterclockwise until cap is removed and put cap in safe place.
7. Remove 1/4" stainless ball bearings carefully and put it in a receptacle in a safe place.
8. Lift and remove small manifold with short tubes. Put it in a safe place.
9. Remove 1/4" ball bearing in similar method to step #7.
10. Lift and remove large manifold with large length tubes similar to step #8.
11. Clean ball bearings by soaking in de-liming solution.
12. Ball bearing race ways may be cleaned by either brushing with de-liming solution (toothbrush makes excellent tool) or gently clean by rubbing with fine sandpaper or emery cloth.
13. Rinse ball bearings and manifolds thoroughly.
14. To reassemble, first fill lower race to capacity with 1/4" ball bearings, then remove one. This will give proper movement needed during rotation of assembly.
15. Replace lower manifold and fill race fully with 1/4" ball bearings. Repeat, removing one only.
16. Replace upper manifolds and repeat necessary parts of step #14.
17. Replace wash cap by screwing on center shaft clockwise, finger tight.
18. Back off wash cap about 1/4 turn and tighten Allen set screw.
19. Rotate manifolds in opposite directions; see if they rotate freely. A rule of thumb is to select the longest tube in the bottom manifold and make sure it moves up and down at least 1/8" and no more than 1/4".
20. Replace wash head assembly and rinse arm.
21. Close the front door and refill dishwasher.
22. Run through several cycles and recheck wash arms for easy movement. Adjust if necessary.



ITEM	P/N	DESCRIPTION	ITEM	P/N	DESCRIPTION
1.	0186500	WASH HEAD CAP WITH RACE	6.	0187500	WASH HEAD CENTER SHAFT
2.	0187000	WASH HEAD CAP SET SCREW	7.	0193601	WASH HEAD FIXED RACE
3.	0194000	WASH HEAD BEARING ¼" S/S	8.	0109600	UPPER PUMP HOUSING
4.	0189000	WASH HEAD SMALL MANIFOLD w/TUBES	9.	0189805	WASH HEAD ASSEMBLY RETAINING PIN w/RING
5.	0189500	WASH HEAD LARGE MANIFOLD w/TUBES			



ITEM	P/N	DESCRIPTION	ITEM	P/N	DESCRIPTION
1.	0125200	RINSE HEAD ARM	5.	0126500	RINSE HEAD SNAP RINGS S/S
2.	0126800	RINSE HEAD END PLUGS	6.	0137301	RINSE FEED PIPE LANYARD PIN
3.	0126000	RINSE HEAD NYLATRON WASHER	7.	0137200	RINSE FEED PIPE (LOWER)
4.	0125500	RINSE HEAD HEX BRUSHING S/S	8.	0137202	RINSE FEED PIPE NIPPLE

# TIMER for MODEL 24 DISHWASHERS

## **General Description:**

The timer is a self-contained (frame mounted) timer of the repeating cycle type. It is mounted to the control panel of Jackson Automatic Dishwashing Machines, to control the automatic functions of these machines. It consists of a clock motor which operates on 60 cycle, AC, 110VAC. In addition to the clock motor, the timer also contains a driven cam arrangement which operates six micro switches.

## **Principle of Operation:**

The timer controls various operations of the automatic washers as per wiring diagram for each machine; however, the timing cycle and the micro switches are the same for each model. The time for **One Complete Revolution** of the cam shaft is approximately 150 seconds, allowing one wash and one rinse operation for each complete revolution of the cam shaft.

## **Service Instructions:**

**Caution:** Always remove the power to the machine before working on the control panel or while servicing the components on the switch panel. All electrical checks should be made by qualified personnel.

Timer operation can be observed after removing the machine's kickplate by loosening the two screws holding it.

If it is determined that the timer is defective, determine which micro switch or if motor is defective. The motor and the micro switches are easily changed.

A frozen contact on a micro switch will be indicated if one function of the timer is being executed all the time or if there is an absence of a click when the switch arm is actuated.

## **To Replace Micro Switch:**

1. Push upward on micro switch terminals (away from cams) until actuator button shows.
2. Pull micro switch straight out.
3. Replace, wire for wire, with new micro switch.
4. Replacing micro switch into timer is simply a reverse of steps 1 and 2.

The timer's cam drive system is equipped with a clutch to enable one to view the operations of the cams and micro switches. Remove power to machine **before** touching timer. Rotate cams by turning with fingers; cams will turn in one direction only. Do not force them. As cams actuate switches, listen for the 'click' of the switch or test the switches with an ohmmeter.

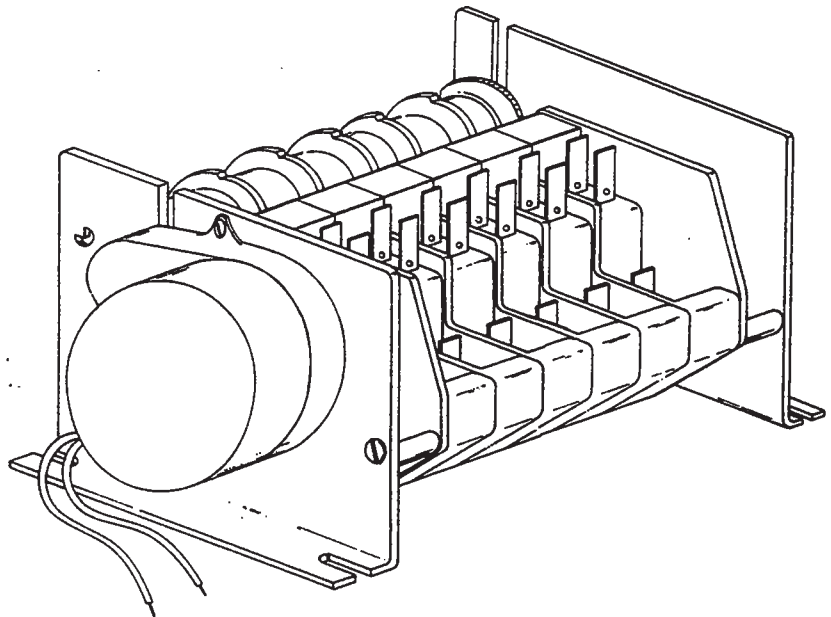
# DEFECTIVE TIMER MOTOR

A defective motor is indicated by the fact that the cams do not rotate or the machine does not perform the automatic operations, or performs a specific part of the cycle continuously, but works okay on manual. Remember, the timer motor is controlled by the door switch and the hold micro switch; check this complete circuit before changing motor.

## To Replace Motor:

1. Remove motor leads from shorting bar and neutral.
2. Remove the two screws which hold the motor.
3. Replace with a new motor.

**TYPICAL TIMER SWITCH    P/N 0177500**



**TIMER**  
**P/N 0174200 (110V, 60 cycle)**

# FUNCTION of SWITCHES, CIRCUIT BREAKER and INDICATING LIGHTS

**On/Fill  
Off/Drain  
Switch:  
P/N 0159600**

This switch serves as the main control for the unit. When pressed into the 'on' position, it activates the heater controls, the automatic fill and readies the unit for the wash cycle. When turned off, this switch signals the automatic drain and turns off all power once draining is completed.

**Power Light:  
P/N 0083518**

This light comes on when the unit is turned on and goes off when the unit is turned off.

**Door Switch:  
P/N 0164000**

Located on top of the unit, behind the latch bracket, this switch serves three functions. When the door is opened, it will reset the timer to the cycle starting position. When door is closed, it will start the automatic cycle. If door should be opened during a cycle, it would act as a safety switch by turning the unit off.

**Cycle Light:  
P/N 0083501**

This light comes on only when the automatic cycle is in progress and goes off when the cycle is complete.

**Manual Wash  
Switch:  
P/N 0159700**

This switch is used to bypass the timer and operate the wash pump manually. The wash pump will run as long as this switch is 'on'. Its prime purpose is to extend the wash period for heavily soiled dishes, but it may be used for deliming.

**Heater Reset  
Button:  
P/N 0169601**

This is the reset button on a thermostatic overload. Its purpose is to provide a secondary protection for the wash tank heater element. If the heater element should come on while the wash tank is empty, this button would pop out, turning off the element and signaling a problem with the automatic fill.

**Reset Light:  
P/N 0083518**

This light comes on only when the heater reset trips off. Its purpose is to signal that there is a problem.

# THERMOSTAT ADJUSTMENT

The thermostat can be adjusted by turning screw #1 (see picture) on the thermostat control box cover. (Remember the present setting, in case the problems are elsewhere in the control circuit.) A CW rotation is used to obtain a lower temperature setting and a CCW rotation is used to obtain a higher temperature setting. A  $\frac{1}{8}$  turn of screw #1 changes the temperature approximately 15°F. If screw #1 is turned all the way to its stop in either direction, adjust screw #2 as follows.

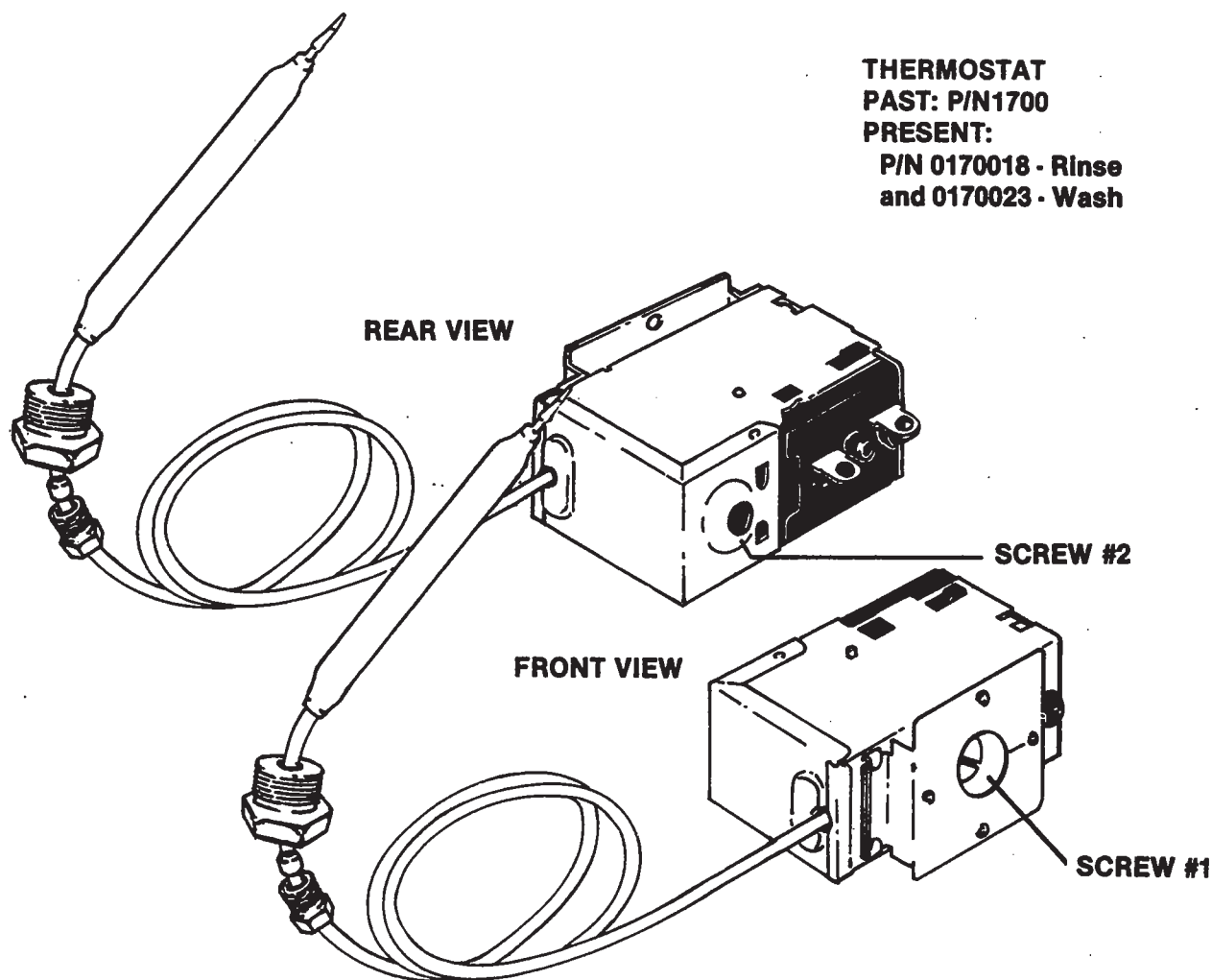
**Note:** Do not touch the screw sealed with red paint. When adjusting screw #2, power should be disconnected during adjustment.

Set screw #1 so that it can be turned equal distances in either direction, then:

- if screw #1 stopped while turning in CW direction, turn screw #2 in CW direction, slowly and only  $\frac{1}{8}$  of a turn or less per complete cycle of the unit.
- if screw #1 stopped while turning in CCW direction, turn screw #2 in CCW direction, slowly and only  $\frac{1}{8}$  of a turn or less per complete cycle of the unit.

Three-fourths of a turn will bring the thermostat to approximately the same setting obtained where screw #1 stopped. Check the present temperature setting before attempting any further adjustments. Use screw #1 for any further adjustments.

Making large moves in adjusting may cause misalignment, thus increasing chances that further adjustment cannot be made and thermostat will have to be replaced.





# RINSE TANK HEATER SYSTEM

## Function:

The Rinse Tank Heater System is electrically connected in the circuit with the control system functioning on 110/130V and the power system functioning on 208/230V for both systems. The heat circuit is controlled by the 'on/fill' switch (mounted on front panel) and a thermostat (mounted near thermometer) which activates the coil on the heat relay. When higher temperature is required, power is applied to the heaters when the contacts of the heat relay are closed. Should the rinse tank thermometer read either too high or too low, follow checkout below.

## Checkout of Heater System for Rinse Tank: (Refer to drawing, Figure #2)

**Note: The following checkout should be done by a qualified service person or electrician.**

1. Turn off power to machine by tripping circuit breaker to 'off' position.
2. Remove front kick plate below door.
3. Make sure rinse temperature is below 180°.
4. Reapply power and observe heat relay (2pole) letter G, figure 2, (next to timer) as 'on/fill' switch is turned on and off several times.

### AA If heat relay contacts do not close, with 'on/fill' switch on:

1. Check power supply at Position 1 on terminal board X. Voltage should be 110VAC.
2. Check Position 3; there should be 'zero' volts there. If not, readjust thermostat per thermostat instructions.
3. If voltage is being applied to Position 1, then the relay should be replaced; coil on relay probably defective.

### BB To determine if elements are working:

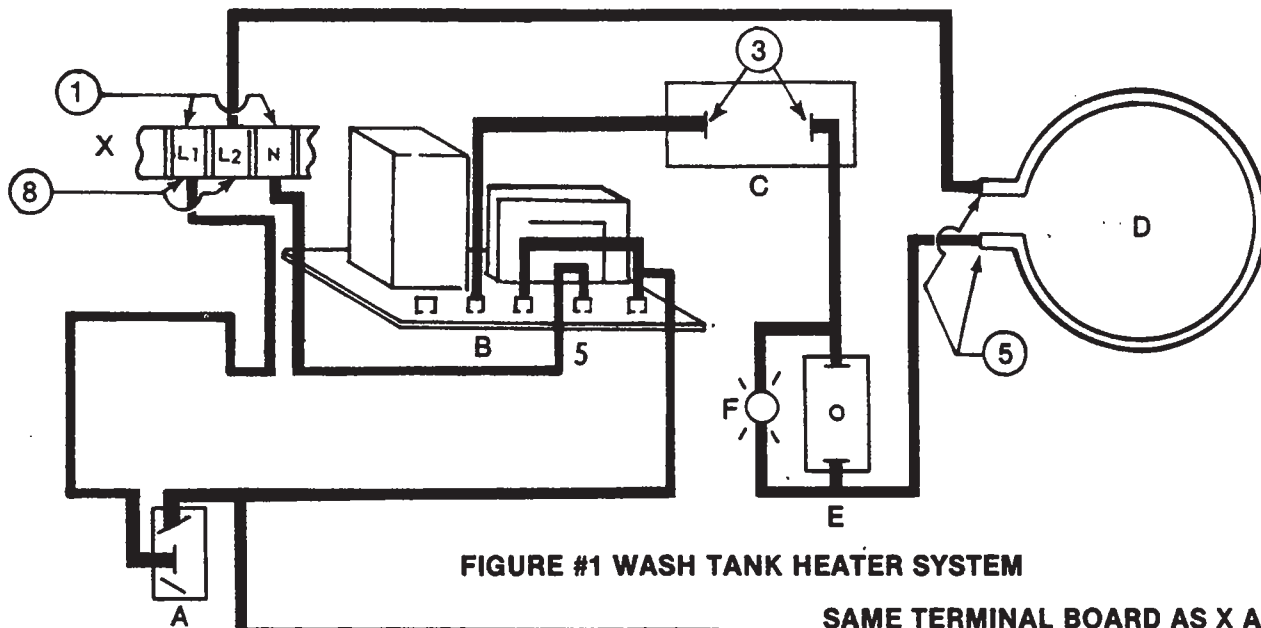
1. There's an insulated movable bar on the heat relay across the top of the two contacts. With an insulated probe, depress the bar and observe rinse thermometer; the temperature should rise noticeably in a minute or two. If it moves **very** slowly, it would indicate that one element is defective. If it moves consistently higher at a good rate, the elements are okay.

**Note: A check with an amp probe, if available, can be made.**

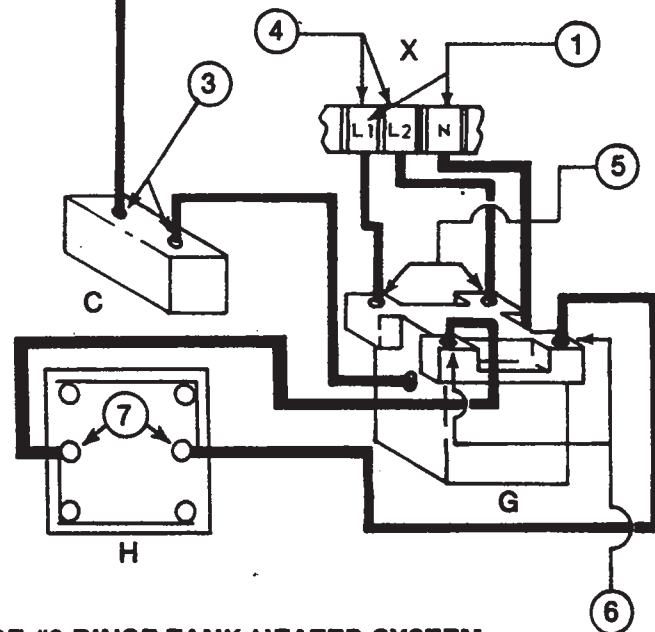
The element should draw 28 amps. Replace element if found defective.

### CC If the heat relay closes:

1. Check power supply at Position 4 on terminal board X, right hand view. It should be 220V approx. If not, check circuit breaker at customer's panel; replace if defective.
2. Check power at Position 5; voltage should be 220V. If not, check connections and wires for breaks; replace as necessary.
3. With 'on/fill' switch on and relay closed, check power at Position 6; voltage should be 220V. If not, replace heat relay.
4. If No. 3 above checks out okay, check at Position 7; voltage should be 220V. If not, check wiring from heat relay to elements for loose connections or broken wires; repair as necessary.



**SAME TERMINAL BOARD AS X ABOVE**



- A - ON/FILL SWITCH**  
**B - WATER LEVEL CONTROL**  
**C - THERMOSTAT**  
**D - (WASH) RING HEATER**  
**E - THERMOSTATIC OVERLOAD**

- F - RESET LIGHT  
G - RELAY  
H - RINSE HEATER  
X - TERMINAL BOARD

# WASH TANK HEATER SYSTEM

## Function:

The Wash Tank Heater Control system is electrically connected in the circuit to operate on 220V regardless whether system is 60 or 50 cycle. The heat circuit is controlled by a water level control (mounted middle of control panel), thermostat (mounted near thermometers), and thermostatic overload (located beside manual wash switch). When higher temperature is required, power is applied to the heater element through above controls. Should the wash tank thermometer read either too high or too low, follow checkout below.

## Checkout of Heater System for Wash Tank: (Refer to drawing, Figure 1.)

**Note:** The following checkout should be done by qualified service personnel or electrician.

1. Ready machine for normal dishwashing operation with wash tank water at proper level.
2. Remove front kickplate below door.

**Note:** Power's still applied to circuit, so be careful.

3. Check power to machine at Position 1; terminal board X should read 110V. If not, check customer's circuit breaker. If defective, replace.
4. Wash temperature should be 130° or less to proceed.
5. Observe water level control, letter 'B' (with front door closed and latched). Turn 'on/fill' switch on and off several times. Relay and contact points (inside clear plastic case on water level control) should move back and forth.

**AA** If water level control relay doesn't close, refer to page on Water Level Control's function and checkout.

**BB** If water level control relay does close, proceed with 'on/fill' on.

1. Check voltage at Position 1 on terminal board X. Voltage is 110.
2. Check Position 3, Figure 1; there should be no voltage. If there is voltage, then adjust thermostat (refer to page on Thermostat Adjusting).
3. Check reset light. If light is on, push reset button.
4. Check Position 5, Figure 1, voltage should be 220. If not, check Position 8, there should be 220V.
5. Temperature should rise slowly, a check with an amp probe would indicate if the element is drawing the correct amperage. Replace element if defective.

# WATER LEVEL CONTROL

AS USED ON 24

P/N 0204500 (110V, 60 cycle)

## Function:

The water level control device is utilized on this machine to automatically control the filling of the wash tank and the activation of the wash tank heater.

**Note:** All electrical checks should be made by qualified service personnel.

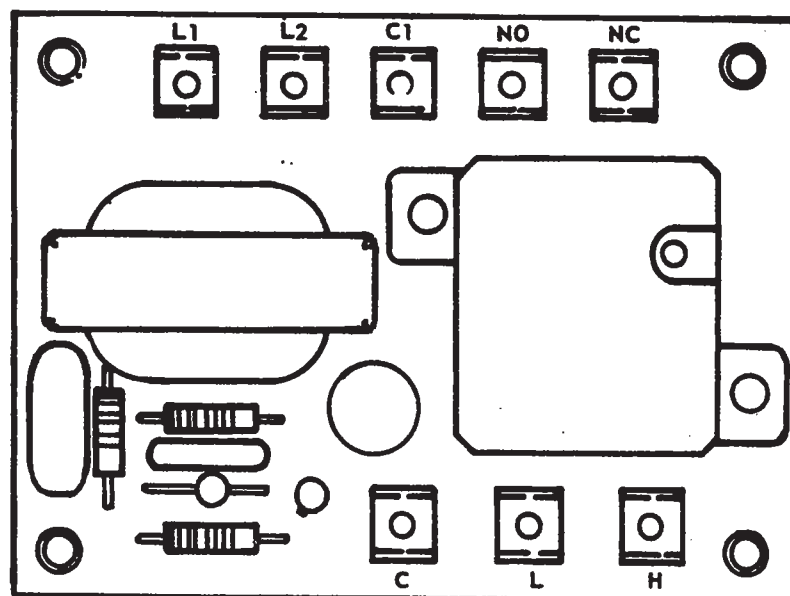
The control is designed to sense when the proper water level is reached. At this time, the relay in the clear plastic case will activate, opening the auto fill circuit and closing the circuit to the thermostat which completes the wash tank heat circuit as it closes. If one of the following problems exist, this unit should be checked out as shown below.

## Symptoms of Level Control Failure:

1. Automatic fill will not shut off when water reaches the proper level.
2. Machine will not automatically fill when 'on/fill' switch is activated.
3. Wash heater reset trips off.

## Proceed with Checkouts:

1. Remove power source to machine by moving circuit breaker to 'off' position.
2. Remove screws holding lower kick plate on front of machine and locate water level control (sketch below).
3. Remove, mark and insulate, for easy replacement, wires going to letters C & H.
4. Re-apply power, turn on 'on/fill' switch. With an insulated wire, connect jumper wire between terminals C & H (24 volt system).
5. If relay operates, the water level control action can be deemed operational; then other causes should be explored.
6. If relay doesn't operate, replace control.
7. Remove power source once again and replace wires that were removed in step three to original terminals (see trouble shooting section for other possible causes).



# SERVICE INSTRUCTIONS

## (INCOMING WATER SOLENOID VALVE)

### SOLENOID VALVE

P/N 1421 (110V, used on 60 cycle machine)

#### To take the valve apart:

**Disassembly** — These valves may be taken apart by unscrewing the bonnet and the enclosing tube assembly from the valve body assembly. See Fig. 3. After unscrewing, carefully lift off the bonnet and enclosing tube assembly. Don't drop the plunger. The "O" ring seal and diaphragm cartridge can now be lifted out.

Be careful not to damage the machined faces while the valve is apart.

**To Reassemble** — Place the diaphragm cartridge in the body with the pilot port extension UP. Hold the plunger with the synthetic seat against the pilot port. Make sure the "O" ring is in place, then lower the bonnet and enclosing tube assembly over the plunger. Screw bonnet assembly snugly down on the body assembly.

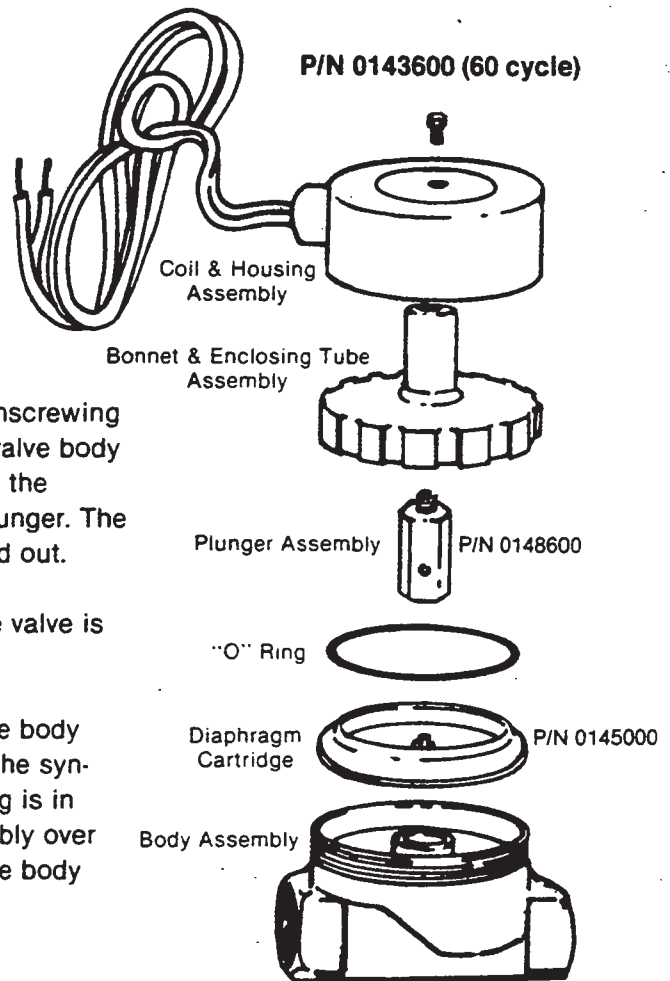
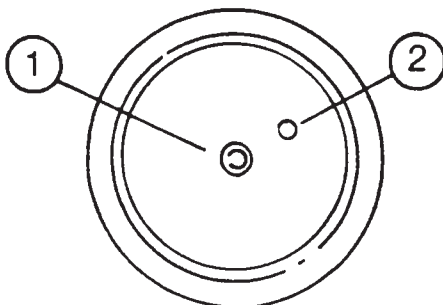


FIG.3

### DIAPHRAGM CARTRIDGE



#### Possible Problems

Pilot Port extension #1 clogged

Hole #2 clogged

#### Remedy

Pass heated straight pin through hole #2 or clean hole #1

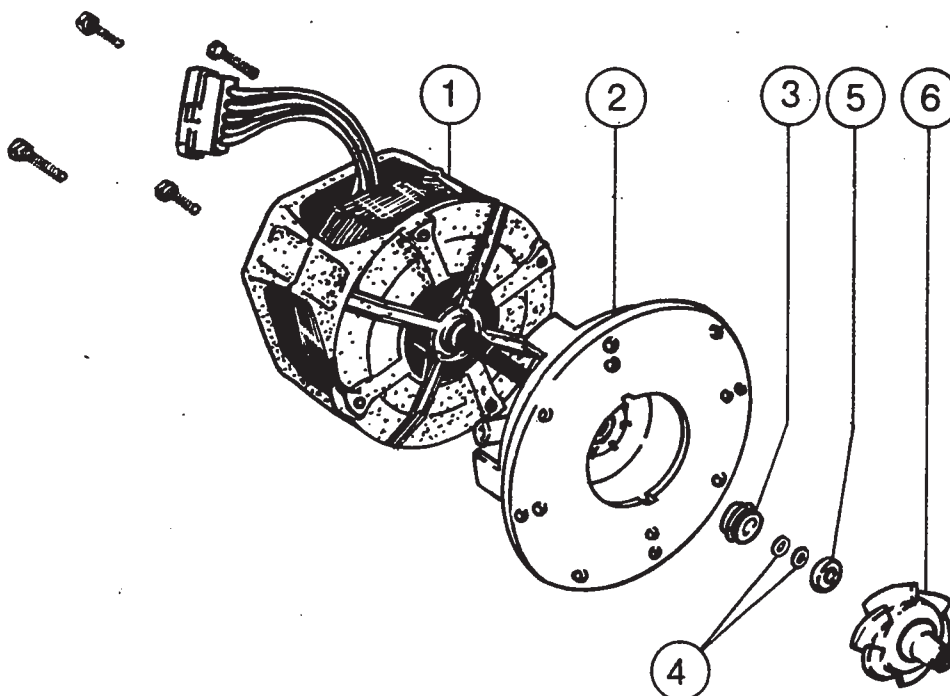
# SEAL and CERAMIC for PUMP SYSTEM

(GENERAL INFORMATION)

The wash and drain pump are part of the total motor pump system. One seal and ceramic are utilized to prevent the pump from leaking.

## Replacement of Seal and/or Ceramic:

1. Drain machine either by depressing drain switch or by bailing out.
2. **Turn incoming power to machine off.**
3. Open door — remove dolly, racks, rinse head assembly and wash head assembly.
4. Remove kickplate (located under front door).
5. Unplug motor at connector
6. Loosen eight screws holding pump in sump tank.
7. Disconnect drain hose from motor (must be done from underneath machine).
8. Pull motor and pump gently upward and move from side to side as required to remove unit. (Old machine motor removed downward.)
9. Set pump and motor on bench and proceed.
10. Loosen eight screws holding upper pump housing, and remove housing.
11. Remove diffuser plate.
12. Loosen impeller screw and remove impeller.
13. Remove suction adapter plate.
14. Remove drain inlet plate.
15. Remove propeller.
16. Remove mounting plate from motor (loosen 4 phillips head screws on bottom of plate).
17. Knock out old seal carefully and clean hole, re-insert new seal.  
**Note: Be sure not to ruffle edges of seal when inserting. Seal should contact all resting surfaces at one time.**
18. Ceramic is imbedded in propeller and normally does not wear or need replacement, but check for cracks.
19. Re-install motor and pump by reversing above process.



- 1. MOTOR
- 2. MOUNTING PLATE
- 3. STATIONARY SEAL
- 4. SHIM WASHERS  
ON MOTOR SHAFT
- 5. CERAMIC
- 6. DRAIN PROPELLER

# TROUBLE SHOOTING GUIDE

PROBLEM	CAUSE	SOLUTION
Water overflow out bottom of front door when wash pump is operating.	Machine not level.  Overflow drain clogged.  Water level in machine's wash reservoir too high.  Detergent foaming. Equalizing vent blocked. Wires broken or loose.	Level machine. Slight tilt to rear Remove obstruction, checking inside of machine first.  Solenoid valve not closing at end of fill or rinse cycle causing excessive water problem.  Reduce quantity of detergent. Allow free steam flow.  Check all wires in the motor and reconnect as necessary.
Wash motor doesn't operate on manual wash.	Defective manual wash switch.  Bad bearing, noticeable by noisy bearings or locked drive shaft.  Defective motor starting relay. (Typical - motor hums.)	Replace.  Replace.  Replace.

**Note: The motor starting relay is utilized to insert a starting field in the wash pump motor, once the motor has gained speed, the running winding will then take over and the starting winding will be removed when the relay kicks out.**

Motor runs on manual wash but doesn't operate on automatic (rinse operates okay on both manual and automatic cycles.)	Defective micro switch on timer.  Defective circuit in manual wash switch.	Replace switch.  Replace switch.
No water comes through the rinse arms when the 'on/fill' switch is depressed.	Hand water valve to machine not turned on.  Defective coil on solenoid valve.  Probes are dirty or coated.  Defective water level control.	Turn on water valve.  Replace coil.  Clean probes.  Replace.
Little or no water coming through rinse assemblies.	Limed up rinse heads or piping.  Water pressure low.	Begin by cleaning rinse heads using instructions for de-liming. If this isn't satisfactory, then clean the rinse feed pipes.  Increase pipe size to machine.



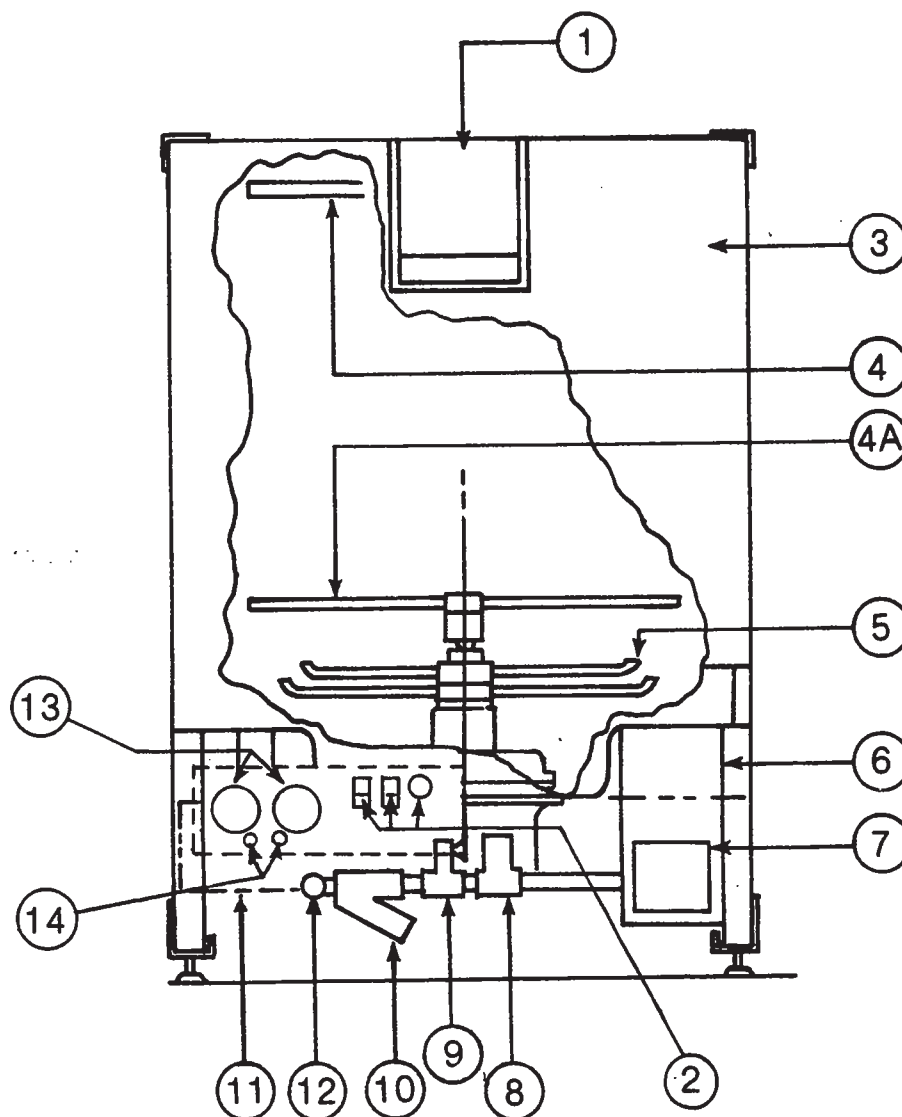
# TROUBLE SHOOTING GUIDE

PROBLEM	CAUSE	SOLUTION
Rinse doesn't operate on automatic during timed cycle (but does operate on auto/fill operation).	Micro switch defective.	Replace.
Rinse water runs continuously with circuit breaker controlling machine turned off.	Defective plunger in solenoid valve.  Defective diaphragm in solenoid valve.	Replace plunger.  Check both holes in diaphragm cartridge to insure that they are open. The one on the outside perimeter should be the size of an ordinary straight pin. If it's not, heat a straight pin and put it through this hole to enlarge. If this fails to correct situation, replace diaphragm.
<b>Note: In disassembling solenoid valve, use instructions shown on separate page.</b>		
Rinse water runs continuously with power applied to machine, but when circuit breaker to machine is turned off, water stops.	Defective water level control.  Defective timer that has stopped in a position keeping the rinse on.  Probes are dirty or coated.	Replace.  Replace timer motor or timer as necessary  Clean probes.
<b>Note: Excessive water line pressure can cause water to continually run even though the power to the machine is turned off. Check specifications for required pressure.</b>		
Wash temperature not at required reading on thermometer.	Defective thermometer.        Rinse temperature not at required temperature, causing wash temperature to be lowered during rinse cycle.	Using a thermometer (fast reading type that's known to be correct), insert in wash reservoir and check reading against wash thermometer on machine. If machine thermometer isn't correct within three or four degrees, replace.  Check out rinse heat using heater checkout system page in manual.
<b>Note: Any switches, water level controls, heater elements, relays or contactor that have to be checked out, can be done using the heater checkout system page.</b>		

# TROUBLE SHOOTING GUIDE

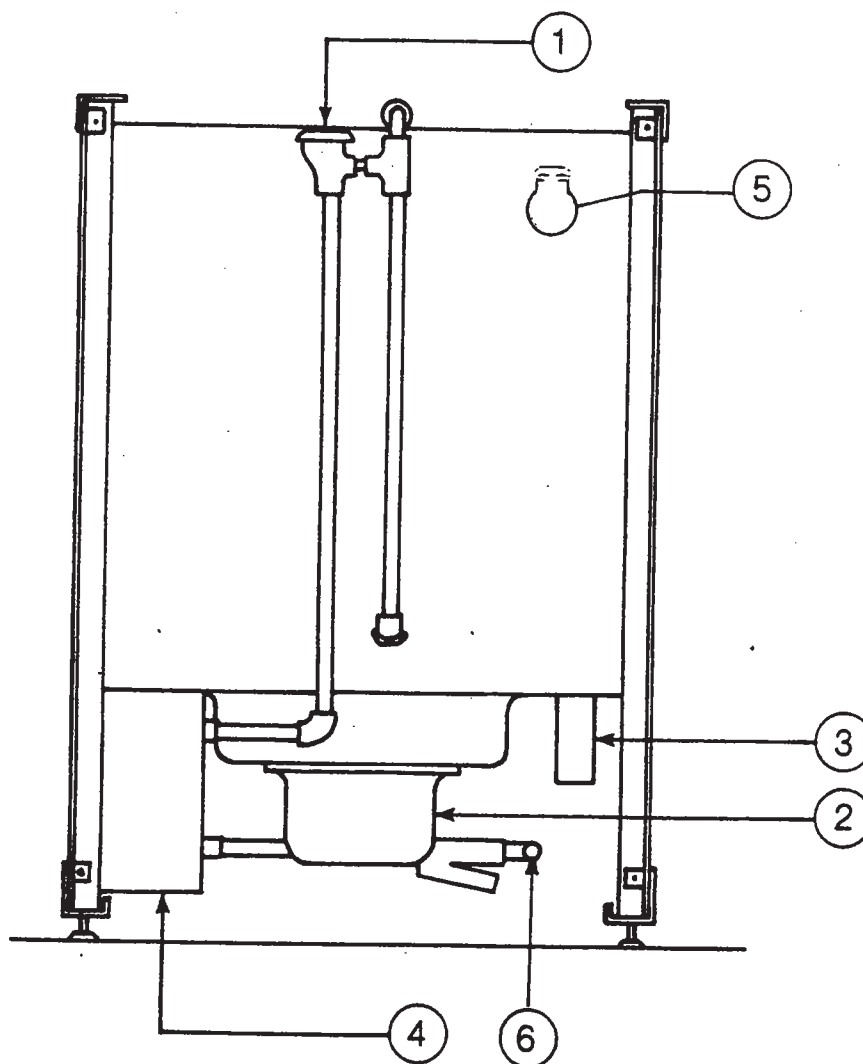
PROBLEM	CAUSE	SOLUTION
Rinse water not at required temperature range.	Thermostat defective.	Adjust using instructions on thermostat page and heater system's checkout page. Replace if necessary.
	Water level protection control defective.	Replace. (Auto/fill would run continuously.)
	Heater element defective.	Replace.
	Wires loose or burned off.	Retighten or Replace.
	Thermometer's defective.	Replace.
After filling machine with water, leakage began at lower front panel without machine operating or at end of rinse cycle.	Thermostat defective.	Adjust using instructions on thermostat page and heater system's checkout page. Replace if necessary.
	Defective heater relay on contactor.	If defective, replace. See note on heater system above.
	Overflow drain clogged.	Clean away obstruction.
	Drain solenoid clogged.	Remove obstruction.
	Defective switch.	Replace.
Machine doesn't drain when 'off/drain' switch is depressed.	Defective motor or motor start relay.	Replace.
	Defective drain solenoid.	Replace.
	Defective micro switch on timer.	Replace micro switch.
	Defective relay.	Replace.

**Note:** The drain pump of this machine is part of wash motor, so if wash motor operates properly drain system should work.



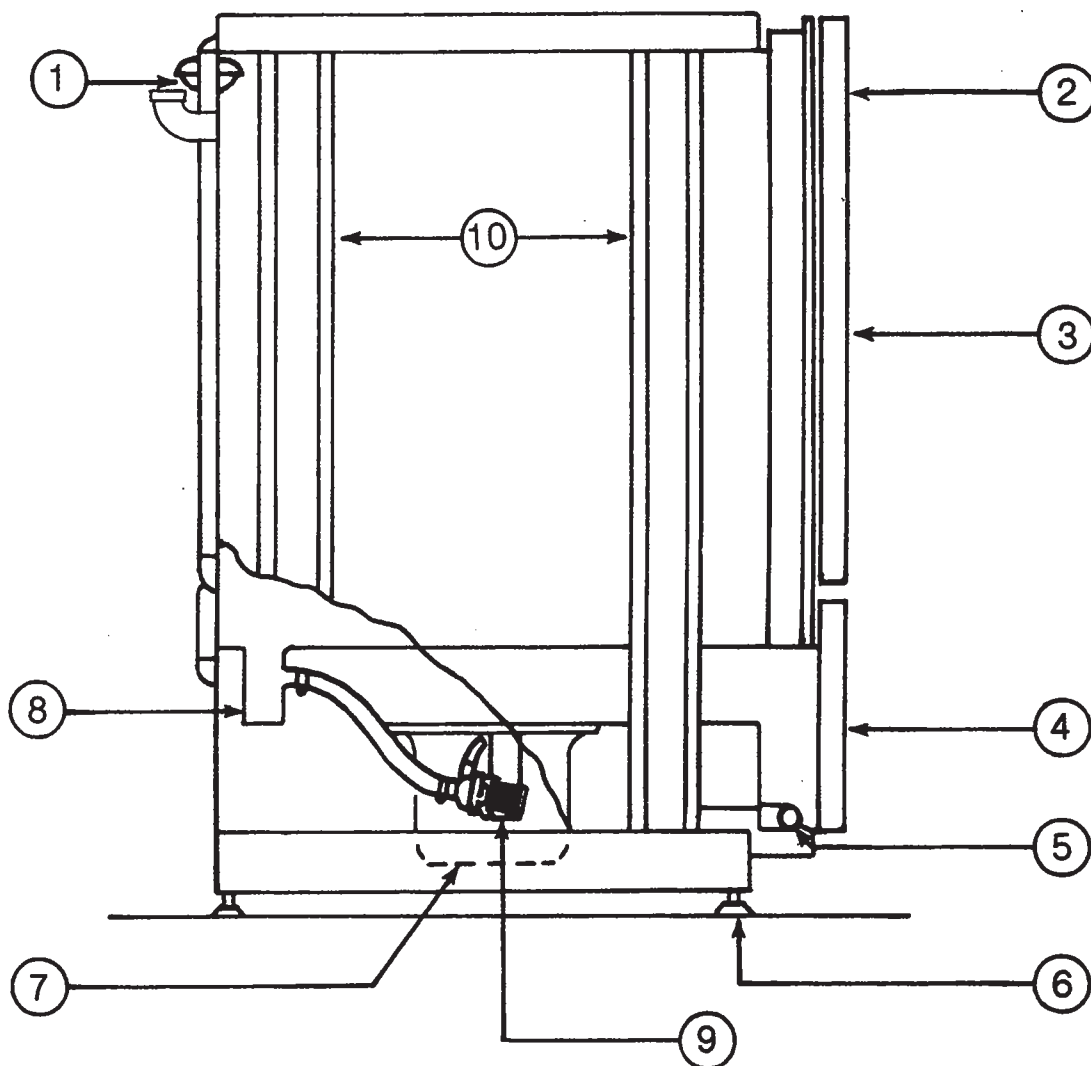
# **FRONT VIEW**

ITEM	P/N	DESCRIPTION
1.	0052700	DOOR HANDLE ASSEMBLY
2.		SWITCHES
3.	0052600	FRONT DOOR
4.	0125100	RINSE ASSEMBLY, UPPER
4A.	0125200	RINSE ASSEMBLY, LOWER
5.	0188900	WASH ASSEMBLY
6.	0005700	BOOSTER TANK
7.	0060000	HEATER ELEMENTS
8.	0142100	SOLENOID, (110V, used on 60 cycle machines)
9.	0185000	VALVE FOR HEALTH INSPECTOR GAUGE
10.	0153600	"Y" STRAINER
11.		ELECTRIC PANEL
12.		INCOMING WATER CONNECTION
13.	0169100	THERMOMETERS
14.	0170018	THERMOSTATS
	or	
	0170023	



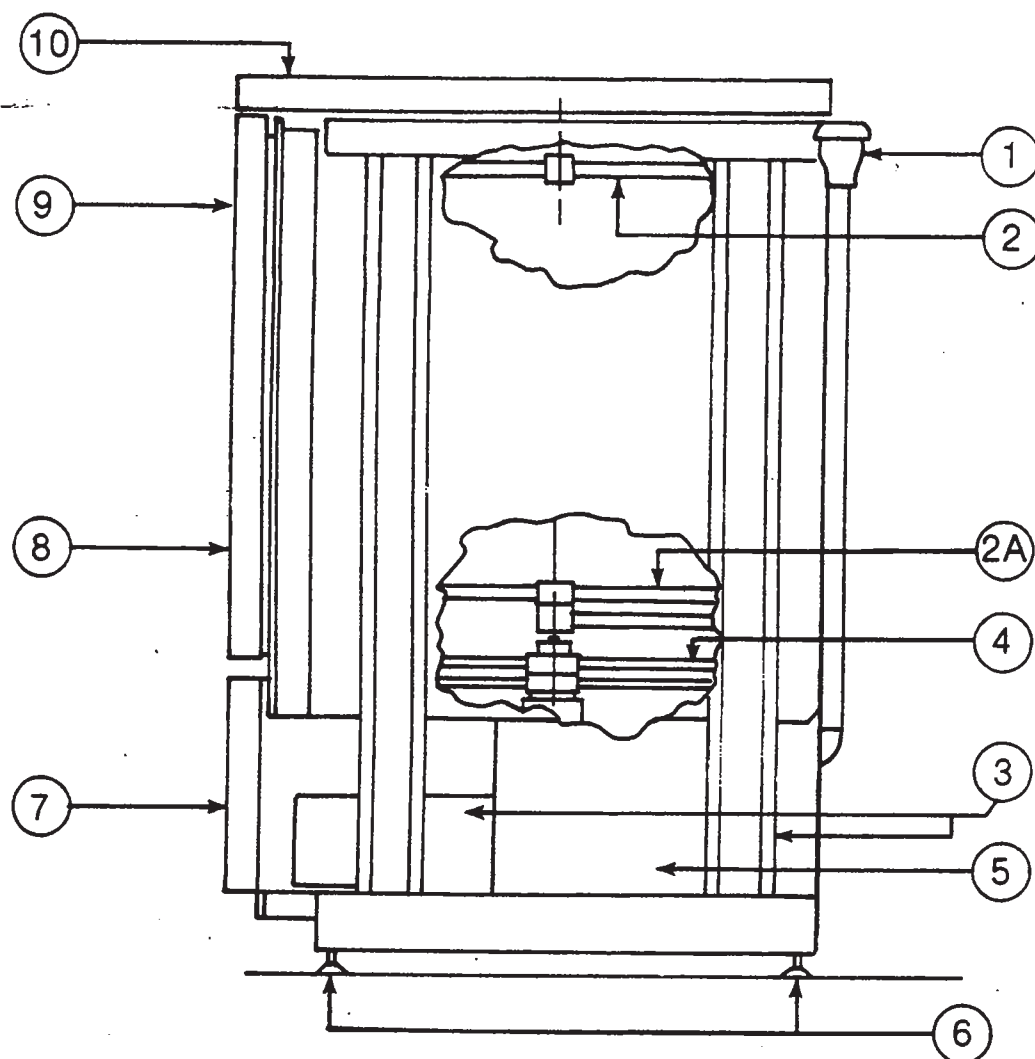
### BACK VIEW

ITEM	P/N	DESCRIPTION
1.	0184101	VACUUM BREAKER ASSEMBLY
2.	0108100	PUMP & MOTOR ASSEMBLY, (110V, 60 cycle)
3.		DRAIN — GRAVITY FEED
4.	0005700	BOOSTER TANK
5.	0185900	EQUALIZING VENT
6.		INCOMING WATER CONNECTION



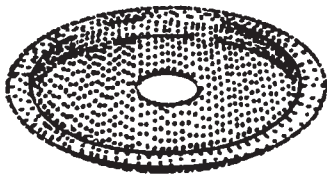
**LEFT SIDE VIEW**

ITEM	P/N	DESCRIPTION
1.	0184101	VACUUM BREAKER ASSEMBLY
2.	0052700	DOOR HANDLE ASSEMBLY
3.	0052600	FRONT DOOR, OUTER
4.	0054902	KICK PANEL
5.		INCOMING WATER CONNECTION
6.	0083400	ADJUSTING FEET
7.	0108100	PUMP & MOTOR ASSEMBLY, (110V, 60 cycle)
8.		DRAIN — GRAVITY FEED
9.	0142400	DRAIN SOLENOID VALVE, (110V, used on 60 cycle machine)
10.	0004001	SIDE FRAME & BRACE, LEFT HAND

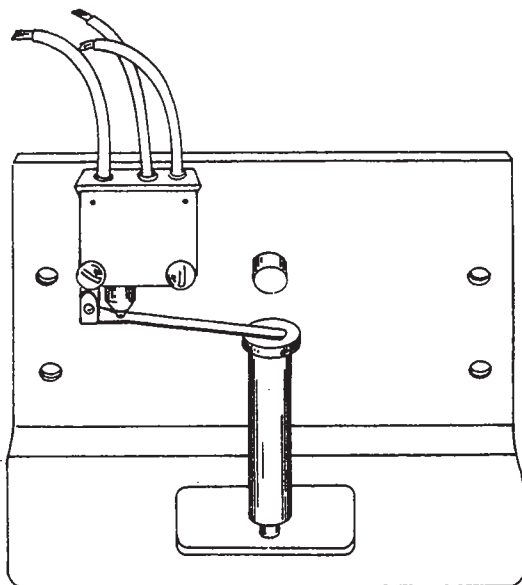


**RIGHT SIDE VIEW**

ITEM	P/N	DESCRIPTION
1.	0184101	VACUUM BREAKER ASSEMBLY
2.	0125100	RINSE ASSEMBLY, UPPER
2A.	0125200	RINSE ASSEMBLY, LOWER
3.	0004000	SIDE FRAME & BRACE, RIGHT HAND
4.	0188900	WASH ASSEMBLY
5.	0005700	BOOSTER TANK
6.	0083400	ADJUSTING FEET
7.	0054902	KICK PANEL
8.	0052600	FRONT DOOR
9.	0052700	DOOR HANDLE ASSEMBLY
10.	0054700	OPTIONAL TOP

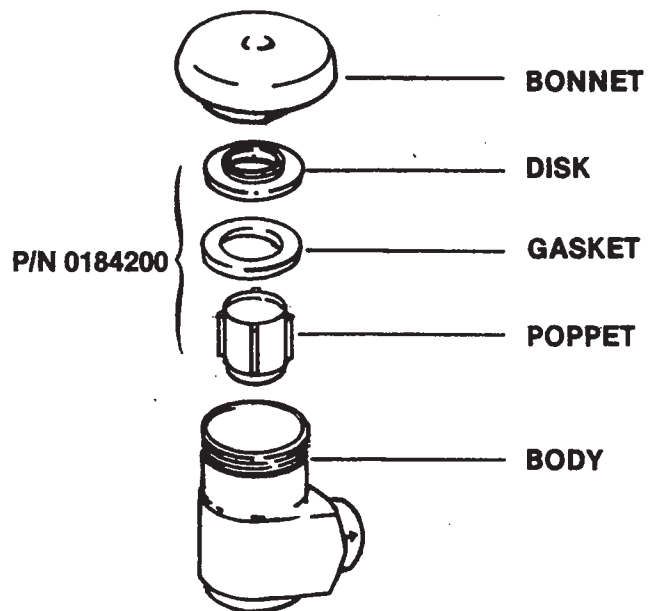


**PAN STRAINER P/N 0153100**

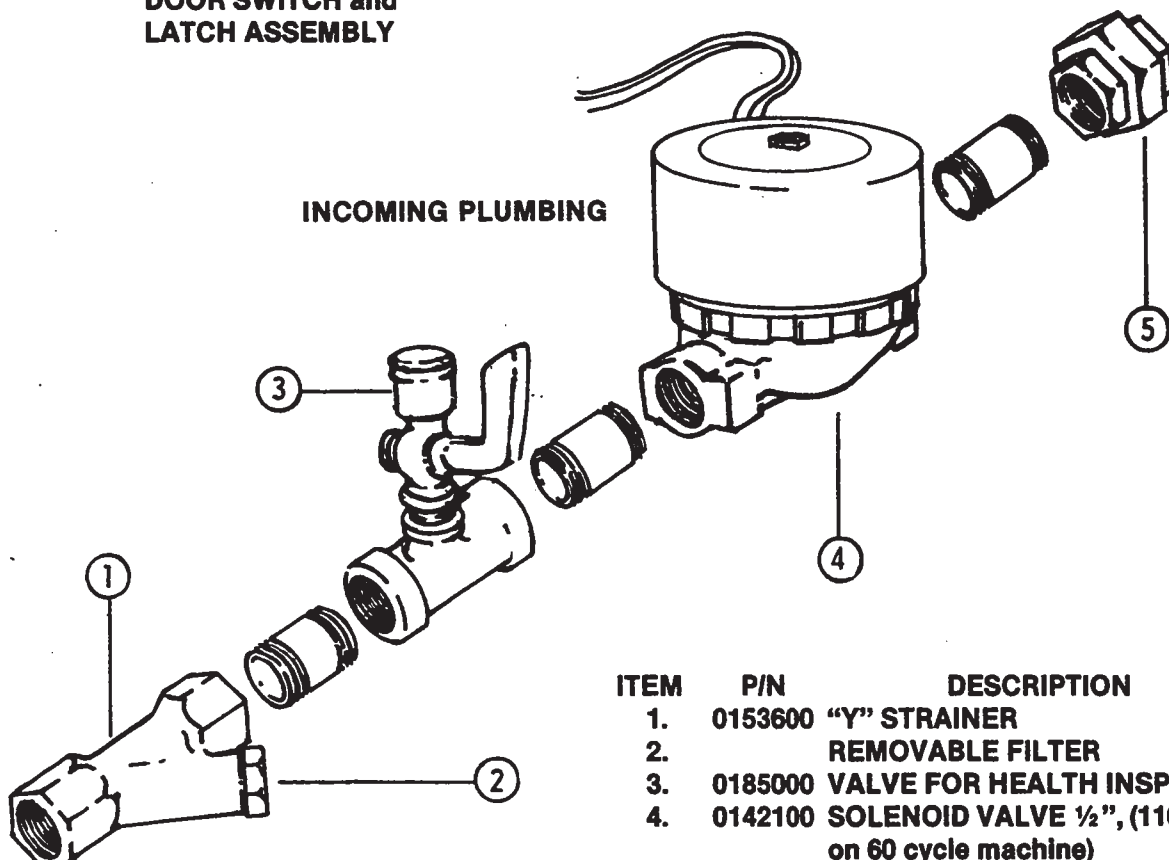


**DOOR SWITCH and  
LATCH ASSEMBLY**

**VACUUM BREAKER P/N 0184101**

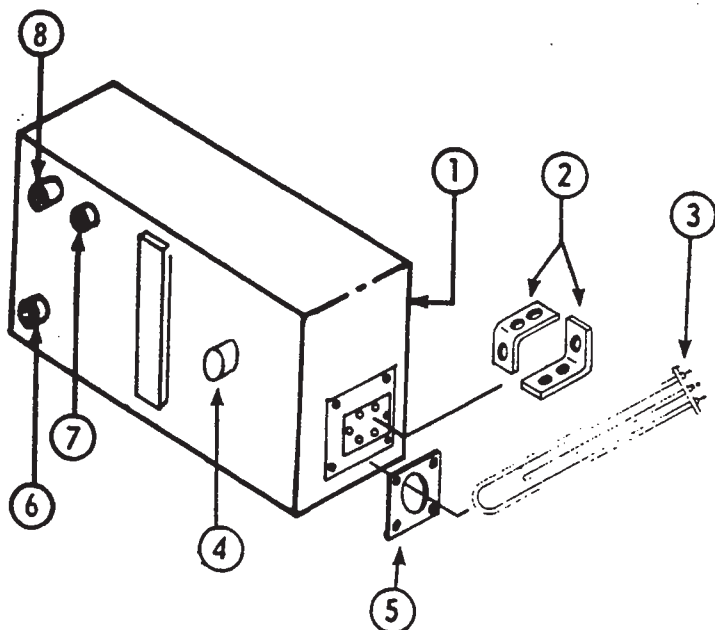


**INCOMING PLUMBING**



ITEM	P/N	DESCRIPTION
1.	0153600	"Y" STRAINER
2.		REMOVABLE FILTER
3.	0185000	VALVE FOR HEALTH INSPECTOR
4.	0142100	SOLENOID VALVE ½", (110V, used on 60 cycle machine)
5.		PIPE UNION



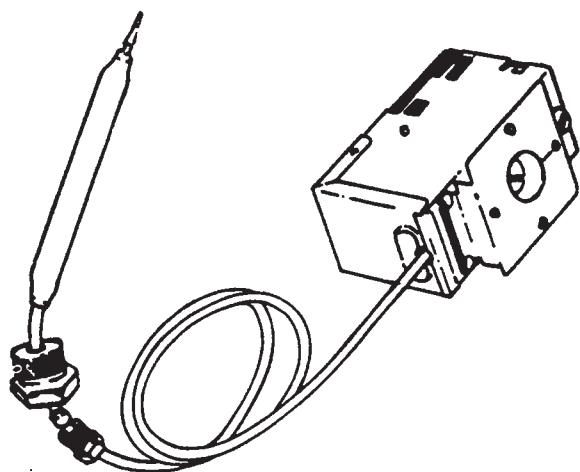
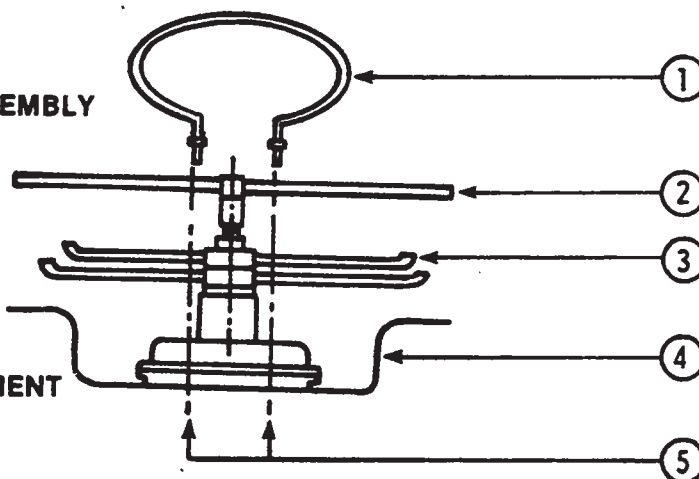


### RINSE TANK

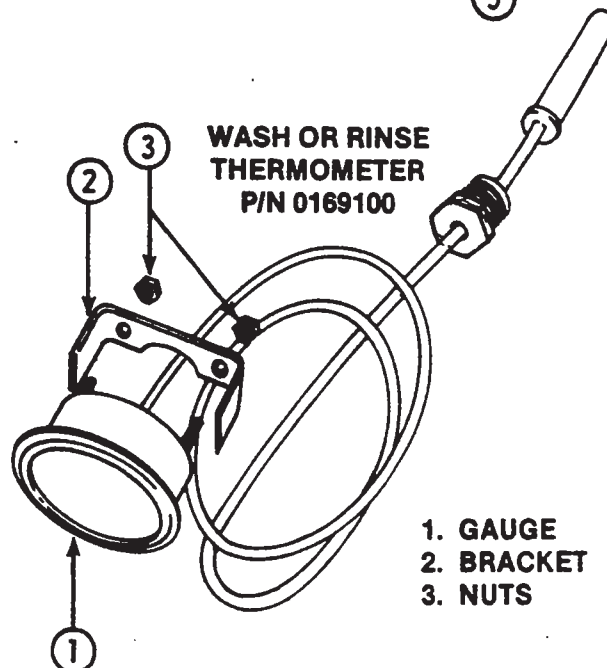
ITEM	P/N	DESCRIPTION
1.	0005700	BOOSTER TANK
2.	0060001	BUS BAR
3.	0060000	BOOSTER HEATER ELEMENT
4.		THERMOSTAT COUPLING
5.	0060002	HEATER ELEMENT GASKET
6.		WATER INLET
7.		THERMOMETER COUPLING
8.		WATER OUTLET

### WASH ASSEMBLY

ITEM	P/N	DESCRIPTION
1.	0056900	WASH TANK RING ELEMENT
2.	0125200	RINSE ASSEMBLY, LOWER
3.	0188900	WASH ASSEMBLY
4.		WASH RESERVOIR
5.		HOLES FOR WASH TANK ELEMENT

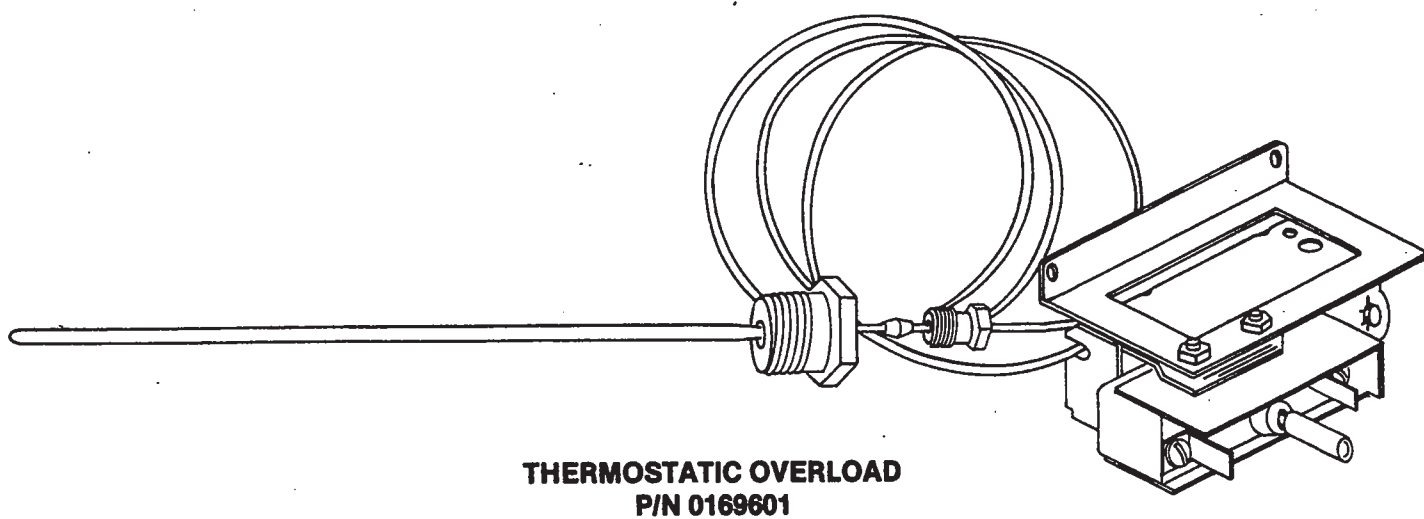
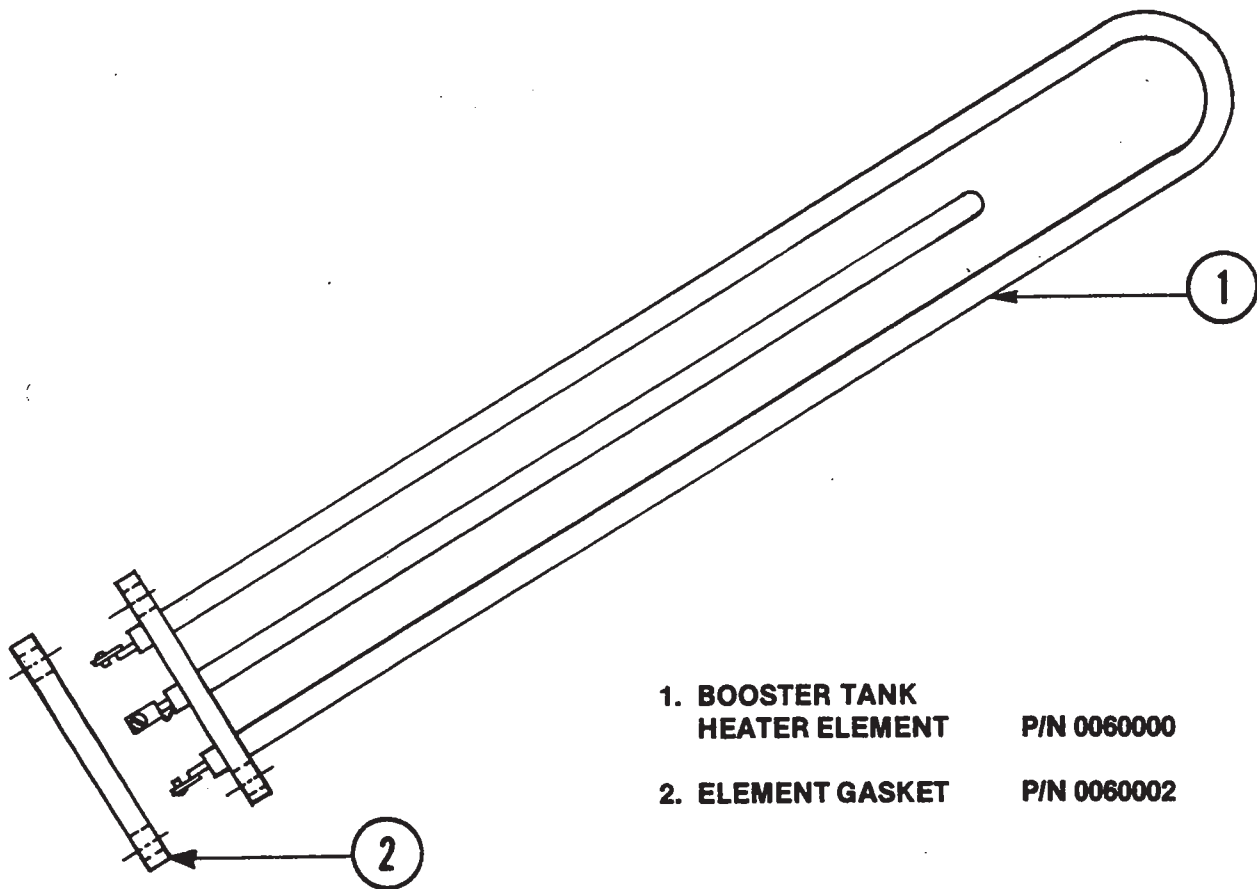


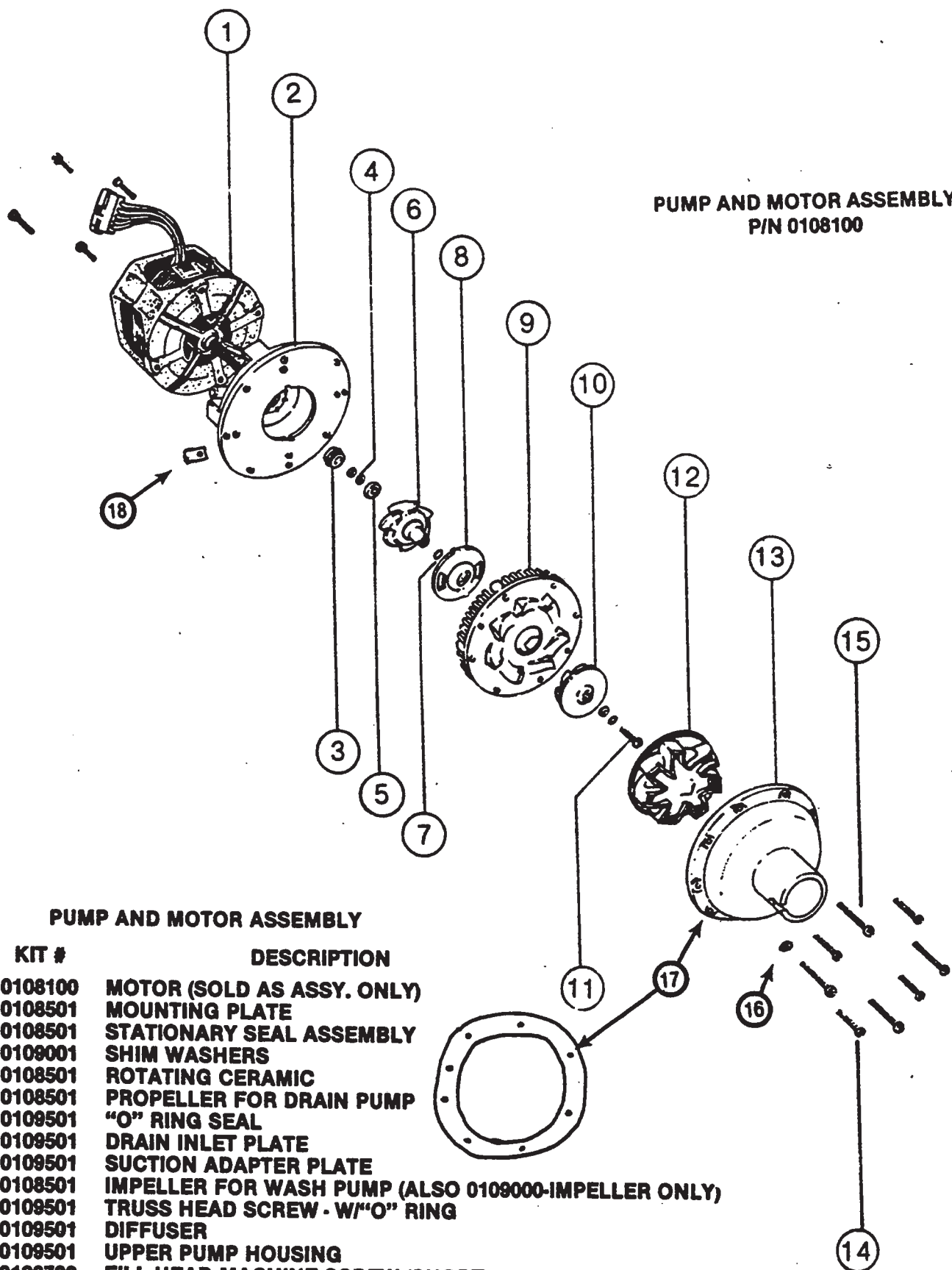
**WASH OR RINSE THERMOSTAT**  
P/N 0170018 - Rinse  
0170023 - Wash



**WASH OR RINSE THERMOMETER**  
P/N 0169100

1. GAUGE  
2. BRACKET  
3. NUTS

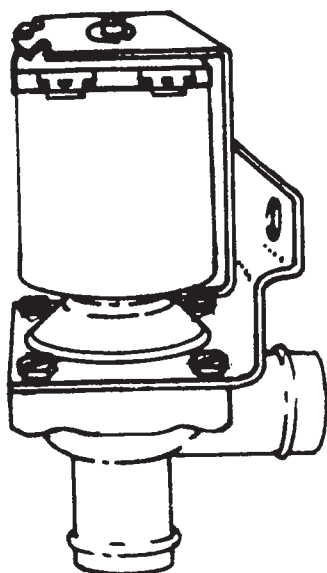




**PUMP AND MOTOR ASSEMBLY**  
P/N 0108100

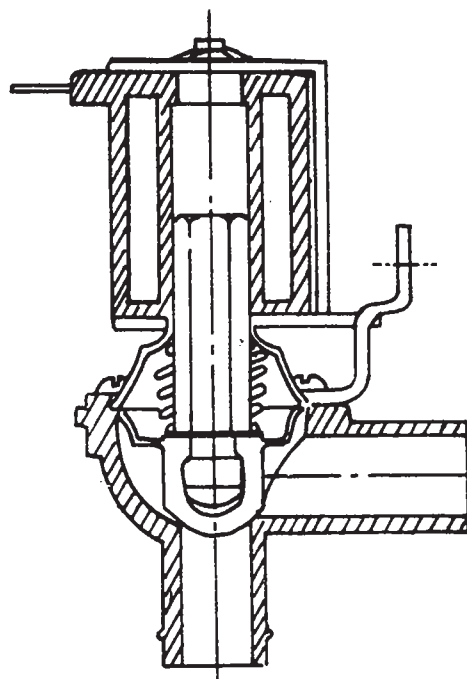
**PUMP AND MOTOR ASSEMBLY**

ITEM	KIT #	DESCRIPTION
1.	0108100	MOTOR (SOLD AS ASSY. ONLY)
2.	0108501	MOUNTING PLATE
3.	0108501	STATIONARY SEAL ASSEMBLY
4.	0109001	SHIM WASHERS
5.	0108501	ROTATING CERAMIC
6.	0108501	PROPELLER FOR DRAIN PUMP
7.	0109501	"O" RING SEAL
8.	0109501	DRAIN INLET PLATE
9.	0109501	SUCTION ADAPTER PLATE
10.	0108501	IMPELLER FOR WASH PUMP (ALSO 0109000-IMPELLER ONLY)
11.	0109501	TRUSS HEAD SCREW - W/"O" RING
12.	0109501	DIFFUSER
13.	0109501	UPPER PUMP HOUSING
14.	0109700	FILL HEAD MACHINE SCREW (SHORT)
15.	0109800	FILL HEAD MACHINE SCREW (LONG)
16.	0108602	SEALING WASHERS
17.	0108400	PUMP GASKET
18.	0108601	MOUNTING CLIPS
	0108600	NOT SHOWN—PUMP TINNEMAN KIT (INCLUDES ST. RELAY AND KEY #'S 17, 18, 14, 15, 16) COMES W/0108100 ASSY

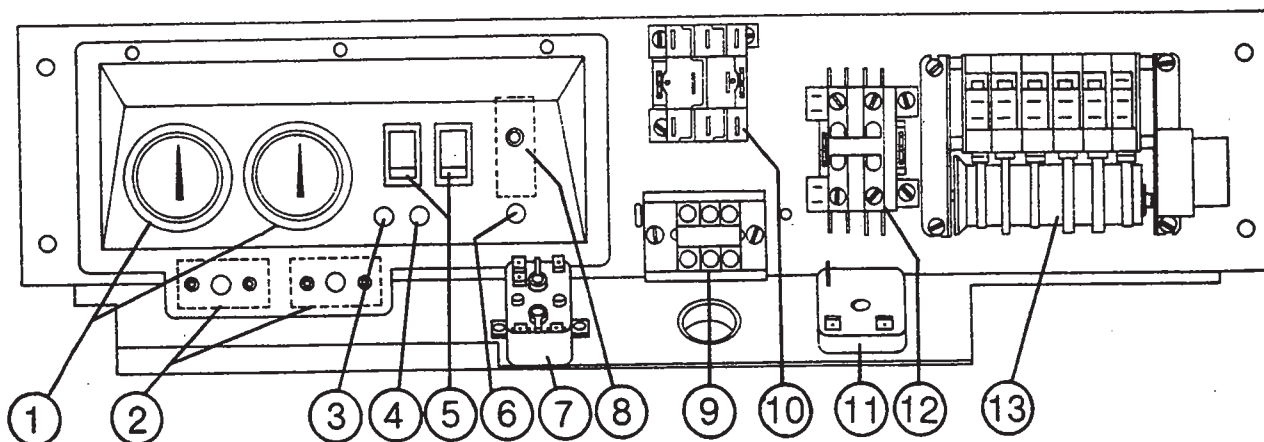


**DRAIN VALVE**

**P/N 0142400 (110 V, used on 60 cycle machine)**

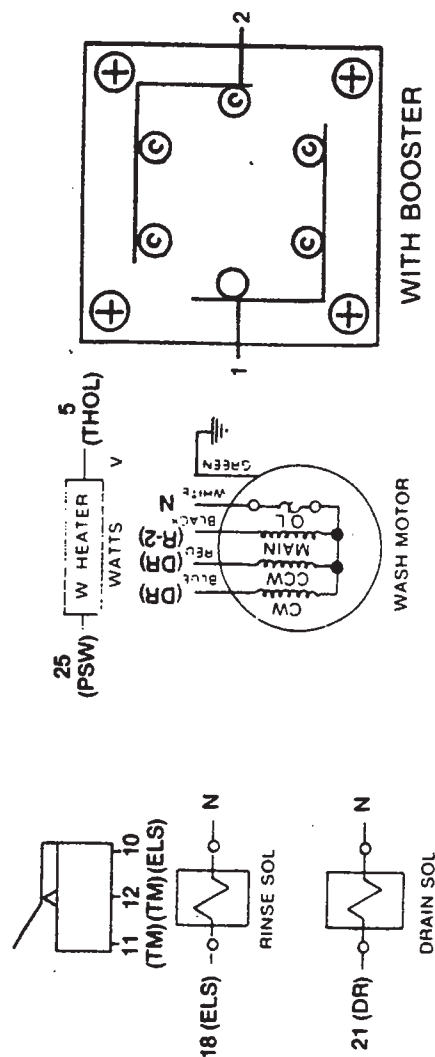
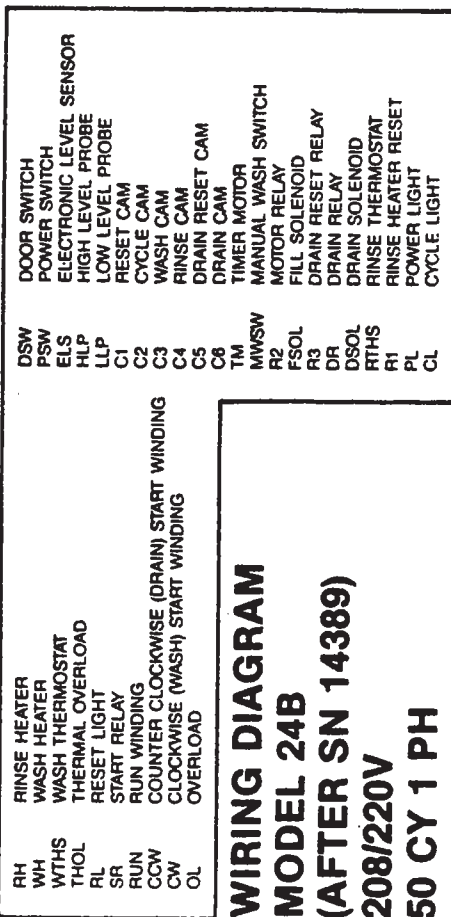


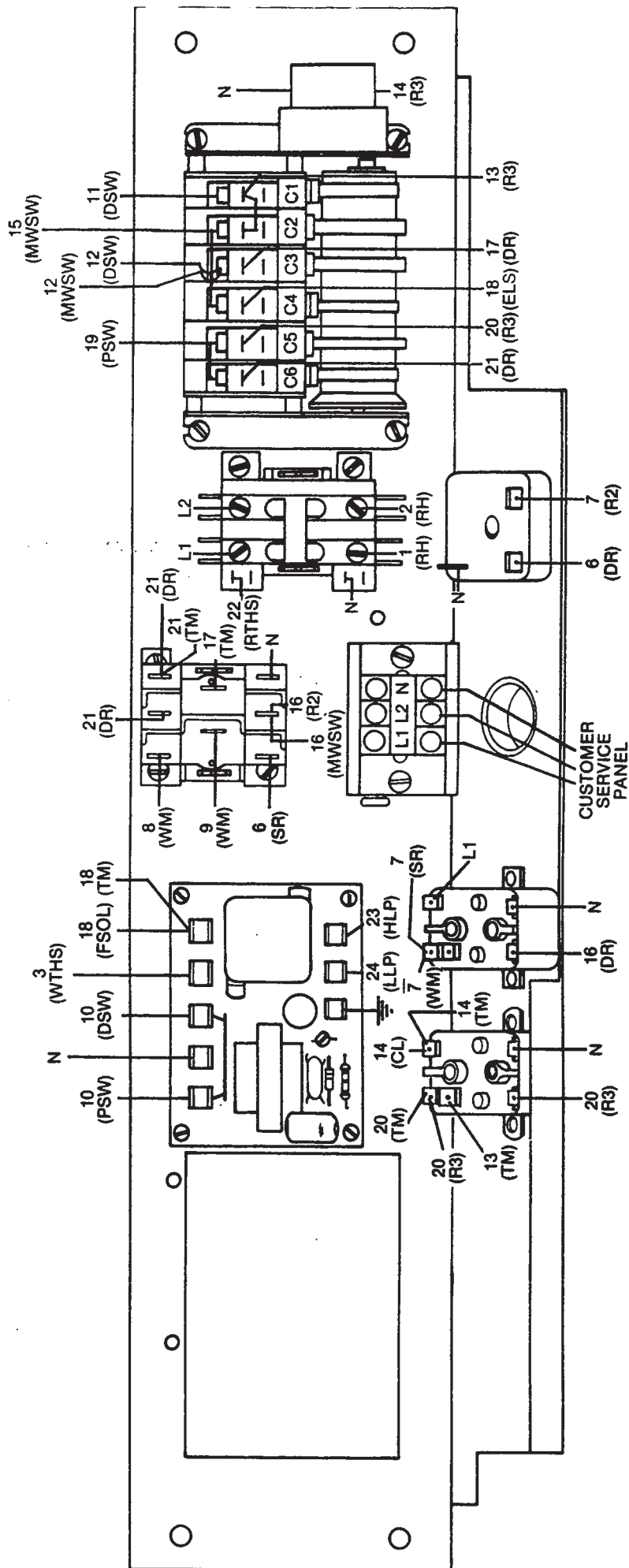
**CUTAWAY VIEW**



**PANEL**

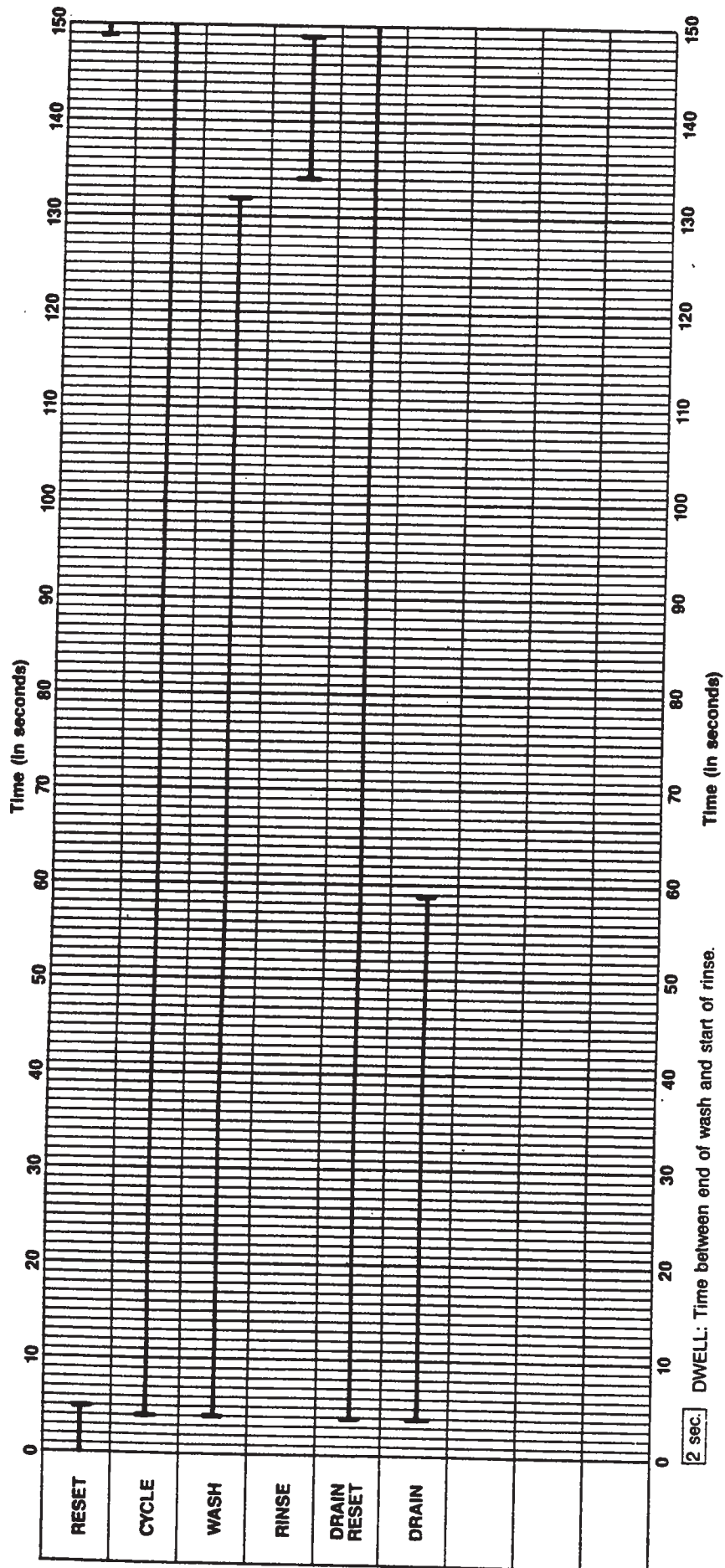
ITEM	P/N	DESCRIPTION
1.	0169100	THERMOMETERS, WASH AND RINSE
2.	0170018	THERMOSTAT
	or	
	0170028	
3.	0083518	POWER LIGHT
4.	0083501	CYCLE LIGHT
5.	0159600	SWITCHES
6.	0083518	RESET LIGHT
7.	0121300	MOTOR RELAY
8.	0169601	THERMOSTATIC OVERLOAD
9.	0165600	TERMINAL BOARD, INCOMING ELECTRICAL CONNECTION
10.	0124600	MOTOR REVERSING RELAY
11.	0120701	MOTOR STARTING RELAY
12.	0120500	HEATER RELAY
13.	0174200	TIMER





FRONT VIEW OF PANEL

# **TIMING CHART**





# COMPLETE PARTS LIST for MODEL 24

0005700	Booster Tank (stripped)	1
0051700	Door Latch and Switch Bracket	1
0052300	Door Gasket	1
0052400	Door Gasket, Clamp Assembly	1
0052600	Door, Front, Outer only, stripped	1
0052700	Door Handle	1
0053400	Drain Hose-Pump to Solenoid Valve, short	1
0053500	Drain Hose Clamps	4
0053600	Drain Hose-Solenoid Valve to Drain, long	1
0054400	Door Spring	2
0054500	Enclosure Panel, righthand side	1
0054600	Enclosure Panel, lefthand side	1
0054700	Enclosure Panel, top	1
0054902	Enclosure Panel, Lower Kickplate	1
0056900	Heater Element, ring-style, 1000W, 220V	1
0060000	Heater Element, Flange Type, 208/230V, 6200W	1
0060001	Heater Element, Flange Type, Bus Bars	2
0060002	Heater Element, Flange Type, Gasket	1
0083501	Light, Indicator, Amber	1
0083518	Light, Indicator, Red	2
0084300	Probe, Lundy, small	1
0108100	Pump Assembly, complete with motor, 115V, 60 cycle	1
0108400	Pump Gasket	1
0108500	Pump Propeller Mounting Plate and Seal Assembly, kit	1
0108700	Pump Diffuser (only)	1
0109000	Pump Impeller, kit	1
0109500	Pump, Upper Housing, kit	1
0109600	Pump, Upper Housing, (only)	1
0109700	Pump Fill Head Machine Screws, short	4
0109800	Pump Fill Head Machine Screws, long	4
0117500	Rack, square, 19 $\frac{3}{4}$ " x 19 $\frac{3}{4}$ " (cup, bowl, glass)	1
0117800	Rack, square, 19 $\frac{3}{4}$ " x 19 $\frac{3}{4}$ " (dish-molded)	2
0120500	Relay, 110V, 2-pole, HW Heat Circuit	1
0120701	Relay, 110V, Motor Starting	1
0121300	Relay, Motor	2
0124600	Relay, Motor Reversing	1
0125100	Rinse Head Assembly, upper	1
0125200	Rinse Head Assembly, lower	1
0125300	Rinse Head End Plug, knurled	2
0125500	Rinse Head, Hex Bushing	2
0125700	Rinse Head, upper, Dual Systems	2
0126000	Rinse Head, Nylatron Washer	2
0126500	Rinse Head, Snap Ring, s/s	2
0131000	Rinse Head Brush, Tube Cleaning	1
0137301	Rinse Feed Pipe Lanyard Pin	1
0142100	Solenoid Valve $\frac{1}{2}$ " JE, 110V	1
0142400	Drain Valve, Dole $\frac{1}{2}$ ", 110V, (Valve only)	1
0143600	Solenoid Valve Coil, 110V, JE	1
0145000	Solenoid Valve Diaphragm Cartridge & "O" Ring, JE	1
0147500	Solenoid Valve "O" Ring, JE	1
0148600	Solenoid Valve, Plunger Assembly, JE	1
0149500	Solenoid Valve, Strainer Screen, JE	1
0153100	Strainer, Pan-Type	1
0159600	Switch, On/Fill-Off/Drain	1
0164000	Switch, Door, SPDT	1
0159700	Switch, Manual Wash	1

# COMPLETE PARTS LIST for MODEL 24

0165600	Terminal Board, 3-pole .....	1
0169100	Thermometer, 36" Cap., Rinse .....	1
0169601	Thermostatic Overload, Heater .....	1
0170018	Thermostat, Rinse, 180° fixed .....	1
0170023	Thermostat, Wash, 150°, fixed .....	1
0174200	Timer, 115V w/wires, 6-cam .....	1
0177500	Timer Micro Switches, Plastic Module-Type .....	3
0184101	Vacuum Breaker, ½" Conbraco .....	1
0184200	Vacuum Breaker Repair Kit, ½" Conbraco .....	1
0186500	Wash Head Cap w/Race .....	1
0187000	Wash Head Cap Set Screw .....	1
0187500	Wash Head Center Shaft .....	1
0188600	Wash Head Holding Pin .....	1
0188900	Wash Head Assembly, complete .....	1
0189000	Small Manifold w/Tubes, Wash Head .....	1
0189500	Large Manifold w/Tubes, Wash Head .....	1
0193600	Wash Head Fixed Race .....	2
0194000	Wash Head Bearings, ¼" s/s .....	57
0204500	Water Level Control, 110V, Curtis .....	1

# JACKSON MAINTENANCE & REPAIR CENTERS

## ALABAMA

### **JONES-McLEOD APPLIANCE SVC**

1616 7TH AVE. NORTH  
BIRMINGHAM, AL 35203  
(205) 251-0159  
800-821-1150  
FAX: (205) 322-1440  
service@jones-mcleod.com

### **JONES-McLEOD APPLIANCE SVC**

854 LAKESIDE DRIVE  
MOBILE, AL 36693  
(334) 666-7278  
800-237-9859  
FAX: (334) 661-0223

## ALASKA

### **RESTAURANT APPLIANCE SERVICE**

7219 ROOSEVELT WAY NE  
SEATTLE, WA 98115  
(206) 524-8200  
800-433-9390  
FAX: (206) 525-2890  
info@restappl.com

## ARIZONA

### **AUTHORIZED COMMERCIAL FOOD EQMT. SVC**

4832 SOUTH 35TH STREET  
PHOENIX, AZ 85040  
(602) 234-2443  
800-824-8875  
FAX: (602) 232-5862  
acsboss@aol.com

### **GCS SERVICE INC. #78**

5052 SOUTH 40TH STREET  
PHOENIX, AZ 85040  
(602) 474-4510  
800-510-3497  
FAX: (602) 470-4511  
phoenix@gcssvc.com

## ARKANSAS

### **BROMLEY PARTS & SVC**

10TH AND RINGO  
P.O. BOX 1688  
LITTLE ROCK, AR 72202  
(501) 374-0281  
(800) 482-9269  
FAX: (501) 374-8352  
brom@mindspring.com

### **COMMERCIAL PARTS & SVC.**

3717 CHERRY ROAD  
MEMPHIS, TN 38118  
(901) 366-4587  
800-262-9155  
FAX: (901) 366-4588

## CALIFORNIA

### **BARKERS FOOD MACHINERY EQUIPMENT**

5367 SECOND STREET  
IRWINDALE, CA 91706  
(626) 960-9390  
800-258-6999  
FAX: (626) 337-4541  
bfms@jps.net

### **GCS SERVICE INC. #24**

1100 EAST PICO BLVD.  
LOS ANGELES, CA 90021  
(213) 683-2090  
800-327-1433  
FAX: (213) 683-2099  
los\_angeles@gcssvc.com

### **GCS SERVICE INC. #24**

650 S. GRAND AVE. STE 111  
SANTA ANA, CA 92705  
(714) 542-1798  
800-540-0719  
FAX: (714) 542-4787  
santa\_ana@gcssvc.com

### **GCS SERVICE INC. #52**

360 LITTLEFIELD  
S. SAN FRANCISCO, CA 94080  
(650) 635-0720  
800-969-4427  
FAX: (650) 871-4019  
san\_francisco@gcssvc.com

### **GCS SERVICE INC. #84**

9030 KENAMAR DR. STE 313  
SAN DIEGO, CA 92121  
(858) 549-8411  
800-422-7278  
FAX: (858) 549-2323  
san\_diego@gcssvc.com

### **P & D APPLIANCE SVC**

100 SOUTH LINDEN AVE.  
S. SAN FRANCISCO, CA 94080  
(650) 635-1900  
800-424-1414  
FAX: (650) 635-1919  
pndappl@aol.com

### **P & D APPLIANCE**

4220-C ROSEVILLE ROAD  
NORTH HIGHLANDS, CA 95660  
(916) 974-2772  
800-824-7219  
FAX: (916) 974-2774

## COLORADO

### **GCS SERVICE INC.**

4251 S. NATCHES CT. #60#  
UNIT C  
SHERIDAN, CO 80110  
(303) 371-9054  
800-972-5314  
FAX: (303) 371-4754  
denver@gcssvc.com

## METRO APPLIANCE SERVICE

1640 S BROADWAY  
DENVER, CO 80210  
(303) 778-1126  
800-525-3532  
FAX: (303) 778-0268  
metroappl@aol.com

## CONNECTICUT

### **GCS SERVICE INC. #06**

302 MURPHY ROAD  
HARTFORD, CT 06114  
(860) 549-5575  
800-423-1562  
FAX: (860) 527-6355  
hartford@gcssvc.com

## DELAWARE

### **FOOD SERVICE EQMT.**

2101 PARKWAY SOUTH  
BROOMALL, PA 19008  
(610) 356-6900  
FAX: (610) 356-2038  
dancerule@aol.com

### **GCS SERVICE INC. #44**

817 N THIRD STREET  
P.O. BOX 3564  
PHILADELPHIA, PA 19123  
(215) 925-6217  
800-441-9115  
FAX: (215) 925-6208  
philadelphia@gcssvc.com

### **ELMER SCHULTZ SERVICE**

36 BELMONT AVE.  
WILLMINGTON, DE 19804  
(302) 655-8900  
800-225-0599  
FAX: (302) 656-3673  
elmer2@erols.com

### **EMR SERVICE DIVISION**

106 WILLIAMSPORT CIRCLE  
SALISBURY, MD 21804  
(410) 543-8197  
FAX: (410) 548-4038

## FLORIDA

### **COMMERCIAL APPLIANCE SERVICE**

8416 LAUREL FAIR CIRCLE  
BLDG 6, SUITE 114  
TAMPA, FL 33610  
(813) 663-0313  
800-282-4718  
FAX: (813) 663-0212  
commercialappliance@  
worldnet.att.net

### **GCS SERVICE INC #15**

3373 NW 168TH ST.  
MIAMI, FL 33056  
(305) 621-6666  
800-766-8966  
FAX: (305) 621-6656  
miami@gcssvc.com

## **GCS SERVICE INC #13**

4305 VINELAND RD STE G-12  
ORLANDO, FL 32811  
(407) 841-2551  
800-338-7322  
FAX: (407) 423-8425  
orlando@gcssvc.com

## **GCS SERVICE INC #14**

3902 CORPOREX PARK DR.  
SUITE 350  
TAMPA, FL 33619  
(813) 626-6044  
800-282-3008  
FAX: (813) 621-1174  
tampa@gcssvc.com

## **JONES-McLEOD**

### **APPLIANCE SVC**

854 LAKESIDE DRIVE  
MOBILE, AL 36693  
(334) 666-7278  
800-237-9859  
FAX: (334) 661-0223  
service@jones-mcleod.com

## GEORGIA

### **GCS SERVICE INC #16**

3127 PRESIDENTIAL DR.  
ATLANTA, GA 30340  
(770) 452-7322  
800-334-3599  
FAX: (770) 452-7473  
atlanta@gcssvc.com

### **SOUTHEASTERN RESTAURANT SVC.**

2200 NORCROSS PKWY.  
SUITE 210  
NORCROSS, GA 30071  
(770) 446-6177  
800-235-6516  
FAX: (770) 446-3157  
srsatl@aol.com

### **WHALEY FOODSERVICE REPAIRS**

109-A OWENS INDUSTRIAL  
DRIVE  
SAVANNAH, GA 31405  
(912) 447-0827  
888-765-0036  
FAX: (912) 447-0826

## HAWAII

### **FOOD EQMT. PARTS & SERVICE CO.**

300 PUUHALE RD.  
HONOLULU, HI 96819  
(808) 847-4871  
FAX: (808) 842-1560  
fepsco@hula.net

# JACKSON MAINTENANCE & REPAIR CENTERS

## IDAHO:

### **RESTAURANT APPLIANCE SVC.**

7219 ROOSEVELT WAY NE  
SEATTLE, WA 98115  
(206) 524-8200  
800-433-9390  
FAX: (206) 525-2890  
info@restappl.com

### **RON'S SERVICE**

703 E 44TH STREET STE 10  
GARDEN CITY, ID 83714  
(208) 375-4073  
FAX: (208) 375-4402

## ILLINOIS

### **CONES REPAIR SVC.**

2408 40TH AVE.  
MOLINE, IL 61265  
(309) 797-5323  
800-716-7070  
FAX: (309)797-3631  
jackb@cones.com

### **EICHENAUER SERVICES INC.**

130 S OAKLAND ST.  
DECATUR, IL 62522  
(217) 429-4229  
800-252-5892  
FAX: (217) 429-0226  
esi@esiquality.com

### **GCS SERVICE INC. #12**

696 LARCH AVE.  
ELMHURST, IL 60126  
(630) 941-7800  
800-942-9689  
FAX: (630) 941-6048  
chicago@gcscsv.com

### **GCS SERVICE INC. #80**

9722 REAVIS PARK DR.  
ST. LOUIS, MO 63123  
(314) 683-7444  
800-284-4427  
FAX: (314) 638-0135  
st\_louis@gcscsv.com

## INDIANA

### **COMMERCIAL PARTS & SVC.**

5310 E 25TH STREET  
INDIANAPOLIS, IN 46218  
(317) 545-9655  
800-727-8710  
FAX: (317) 549-6286  
peproane@aol.com

## IOWA

### **GOODWIN-TUCKER GROUP**

3509 DELAWARE AVENUE  
DES MOINES, IA 50313  
(515) 262-9308  
800-372-6066  
FAX: (515) 262-2936  
goodwintuc@aol.com

### **CONES REPAIR SVC.**

1056 27TH AVENUE SW  
CEDAR RAPIDS, IA 52404  
(319) 365-3325  
800-747-3326  
FAX: (319) 365-0885

## KANSAS

### **GCS SERVICE INC. #82**

6107 CONNECTICUT  
KANSAS CITY, MO 64120  
(816) 920-5999  
800-229-6477  
FAX: (816) 920-7387  
kansas\_city@gcscsv.com

## KENTUCKY

### **CERTIFIED SERVICE CENTER**

RAMCO BUSINESS PARK  
4283 PRODUCE ROAD  
LOUISVILLE, KY 40218  
(502) 964-7007  
800-637-6350  
FAX: (502) 964-7202  
droenigk@certifiedsc.com

### **CERTIFIED SERVICE CENTER**

1051 GOODWIN DRIVE  
LEXINGTON, KY 40505  
(606) 254-8854  
800-432-9269  
FAX: (606) 231-7781  
jadrkins@certifiedsc.com

### **COMMERCIAL PARTS & SERVICE**

4204 SOUTH BROOK STREET  
LOUISVILLE, KY 40214  
(502) 367-1788  
800-752-6160  
FAX: (502) 367-0400

### **COMMERCIAL PARTS & SERVICE**

1002 NANDINO BLVD.  
LEXINGTON, KY 40511  
(606) 255-0746  
800-432-9260  
FAX: (606) 255-0748

## LOUISIANA

### **BANA PARTS INC.**

1501 KUEBLE STREET  
HARAHAN, LA 70123  
(504) 734-0076  
800-325-7543  
FAX: (504) 734-8456

### **BANA PARTS INC.**

4028 GREENWOOD ROAD  
SHREVEPORT, LA 71109  
(318) 631-6550  
800-832-6550  
FAX: (318) 636-5675

## MAINE

### **GCS SERVICE INC. #09**

180 SECOND STREET  
CHELSEA, MA 02150  
(617) 889-9393  
800-225-1155  
FAX: (617) 889-1222  
boston@gcscsv.com

### **MASSACHUSETTS RESTAURANT SUPPLY**

34 SOUTH STREET  
SOMERVILLE, MA 02143  
(617) 868-1930  
800-338-6737  
FAX: (617) 686-5331

## MARYLAND:

### **EMR SERVICE DIVISION**

700 EAST 25TH STREET  
BALTIMORE, MD 21218  
(410) 467-8080  
800-879-4994  
FAX: (410) 467-4191  
baltparts@emrco.com

### **EMR SERVICE DIVISION**

106 WILLIAMSPORT CIRCLE  
SALISBURY, MD 21804  
(410) 543-8197  
888-687-8080  
FAX: (410) 548-4038  
baltparts@emrco.com

### **EMR SERVICE DIVISION**

2626 PITTMAN DRIVE  
SILVER SPRING, MD 20910  
(301) 588-8080  
800-348-2365  
FAX: (301) 588-6985  
baltparts@emrco.com

### **GCS SERVICE INC. #07**

2660 PITTMAN DRIVE  
SILVER SPRING, MD 20910  
(301) 585-7550 (DC)  
(410) 792-0338 (BALT)  
(800) 638-7278  
FAX: (301) 495-4410  
dc\_baltimore@gcscsv.com

## MASSACHUSETTS

### **ACE SERVICE CO.**

95 HAMPTON AVE.  
NEEDHAM, MA 02494  
(781) 449-4220  
800-225-4510 MA & NH  
FAX: (781) 444-4789  
taceservice@aol.com

### **MASSACHUSETTS RESTAURANT SUPPLY**

34 SOUTH STREET  
SOMERVILLE, MA 02143  
(617) 868-1930  
800-338-6737  
FAX: (617) 868-5331

### **GCS SERVICE INC. #09**

180 SECOND STREET  
CHELSEA, MA 02150  
(617) 889-9393  
800-225-1155  
FAX: (617) 889-1222  
boston@gcscsv.com

### **GCS SERVICE INC. #06**

302 MURPHY ROAD  
HARTFORD, CT 06114  
(860) 549-5575  
800-723-1562  
FAX: (860) 527-6355  
hartford@gcscsv.com

## MICHIGAN

### **GCS SERVICE INC. #20**

31829 WEST EIGHT MILE RD.  
LIVONIA, MI 48152  
(248) 426-9500  
800-772-2936  
FAX: (248) 426-7555  
detroit@gcscsv.com

### **JACKSON SERVICE COMPANY**

3980 BENSTEIN RD.  
COMMERCE TWSHP, MI 48382  
(248) 363-4159  
800-332-4053  
FAX: (248) 363-5448

### **GCS SERVICE INC. #21**

3516 ROGER B. CHAFFE SE  
GRAND RAPIDS, MI 49548  
(616) 241-0200  
800-823-4866  
FAX: (616) 241-0541  
grand\_rapids@gcscsv.com

## MINNESOTA

### **GCS SERVICE INC.**

2857 LOUISIANA AVENUE N.  
MINNEAPOLIS, MN 55427  
(612) 546-4221  
800-345-4221  
FAX: (612) 546-4286  
minneapolis@gcscsv.com

## MISSISSIPPI

### **COMMERCIAL PARTS & SVC.**

5755 GALLANT DRIVE  
JACKSON, MS 39206  
(601) 956-7800  
800-274-5954  
FAX: (601) 956-1200

### **COMMERCIAL PARTS & SVC.**

3717 CHERRY ROAD  
MEMPHIS, TN 38118  
(901) 366-4587  
800-262-9155  
FAX: (901) 366-4588



# JACKSON MAINTENANCE & REPAIR CENTERS

## MISSOURI

**GCS SERVICE INC. #82**  
6107 CONNECTICUT  
KANSAS CITY, MO 64120  
(816) 920-5999  
800-229-6477  
FAX: (816) 920-7387  
kansas\_city@gcssvc.com

**GCS SERVICE INC. #80**  
9722 REAVIS PARK DR.  
ST. LOUIS, MO 63123  
(314) 638-7444  
800-284-4427  
FAX: (314) 638-0135  
st\_louis@gcssvc.com

**KAMMERLIN PARTS & SVC.**  
2728 LOCUST STREET  
ST. LOUIS, MO 63103  
(314) 535-2222  
FAX: (314) 535-6205

## MONTANA:

**RESTAURANT APPLIANCE SVC.**  
7219 ROOSEVELT WAY NE  
SEATTLE, WA 98115  
(206) 524-8200  
800-433-9390  
FAX: (206) 525-2890  
info@restapli.com

## NEBRASKA:

**GOODWIN - TUCKER GROUP**  
815 N 19TH STREET  
OMAHA, NE 68102  
(402) 345-7400  
800-228-0342  
FAX: (402) 346-6145  
goodwintuc@aol.com

## NEVADA:

**BURNEY'S COMMERCIAL SERVICE**  
4480 ALDEBARAN AVE.  
LAS VEGAS, NV 89103  
(702) 736-0006  
FAX: (702) 798-7531

**GCS SERVICE INC. #77**  
3585 EAST PATRICK LANE  
SUITE 1000  
LAS VEGAS, NV 89102  
(702) 450-3495  
800-500-9060  
FAX: (702) 450-3491  
las\_vegas@gcssvc.com

## NEW HAMPSHIRE

**GCS SERVICE INC. #09**  
180 SECOND STREET  
CHELSEA, MA 02150  
(617) 889-9393  
800-225-1155  
FAX: (617) 889-1222  
boston@gcssvc.com

**ACE SERVICE CO.**  
95 HAMPTON AVE.  
NEEDHAM, MA 02494  
(781) 449-4220  
800-225-4510 MA & NH  
FAX: (781) 444-4789  
taceservice@aol.com

**MASSACHUSETTS RESTAU-  
RANT SUPPLY**  
34 SOUTH STREET  
SOMERVILLE, MA 02143  
(617) 868-1930  
800-338-6737  
FAX: (617) 868-5331

## NEW JERSEY:

**JACKSON FASPRAY SVC.**  
155 SARGEANT AVE.  
CLIFTON, NJ 07013  
(973) 471-8000  
800-356-6740  
FAX: (973) 471-1289

**GCS SERVICE INC. #2**  
1 MADISON STREET  
BUILDING F  
EAST RUTHERFORD, NJ 07073  
(973) 614-0003  
800-399-8294  
FAX: (973) 614-0230  
east\_rutherford@gcssvc.com

**GCS SERVICE INC. #44**  
817 N THIRD STREET  
PHILADELPHIA, PA 19123  
(215) 925-6217  
800-441-9115  
FAX: (215) 925-6208  
philadelphia@gcssvc.com

**FOOD SERVICE EQMT.**  
2101 PARKWAY SOUTH  
BROOMALL, PA 19008  
(610) 356-6900  
FAX: (610) 356-2038  
dancerule@aol.com

## NEW MEXICO:

**STOVE PARTS SUPPLY CO.**  
2120 SOLANA STREET  
FORT WORTH, TX 76117  
(817) 831-0381  
800-433-1804  
FAX: (817) 834-7754  
bua@stoveparts.com

## NEW YORK

**APPLIANCE INSTALLATION  
AND SERVICE CORP.**  
1336 MAIN STREET  
BUFFALO, NY 14209  
(716) 884-7425  
800-722-1252  
FAX: (716) 884-0410  
ais@worldnet.att.net

**B.E.S.T. INC.**  
3003 GENESEE STREET  
BUFFALO, NY 14225  
(716) 893-6464  
800-338-5011  
FAX: (716) 893-6466  
bestserv@aol.com

**DUFFY'S EQUIPMENT SVC.**  
3138 ONEIDA STREET  
SAUQUOIT, NY 13456  
(315) 737-9401  
800-443-8339  
FAX: (315) 737-7132  
duffyequip@aol.com

**NORTHERN PARTS & SVC.**  
21 NORTHERN AVENUE  
PLATTSBURGH, NY 12903  
(518) 563-3200  
800-634-5005  
FAX: (800) 782-5424  
info@northernparts.com

**GCS SERVICE INC. #01**  
932 GRAND STREET  
BROOKLYN, NY 11211  
(718) 486-5220  
800-969-4271  
FAX: (718) 486-6772  
new\_york@gcssvc.com

**JACKSON FASPRAY SVC.**  
155 SARGEANT AVE.  
CLIFTON, NJ 07013  
(973) 471-8000  
800-356-6740  
FAX: (973) 471-1289  
jfs155@aol.com

## NORTH CAROLINA

**WHALEY FOODSERVICE**  
8334-K ARROWRIDGE BLVD  
CHARLOTTE, NC 28273  
(704) 529-6242  
FAX: (704) 529-1558  
info@whaleyfoodservice.com

**WHALEY FOODSERVICE  
REPAIRS**  
203-D CREEK RIDGE RD.  
GREENSBORO, NC 27406  
(336) 333-2333  
FAX: (336) 333-2533  
info@whaleyfoodservice.com

## WHALEY FOODSERVICE REPAIRS

335-105 SHERWEE DRIVE  
RALEIGH, NC 27603  
(919) 779-2266  
FAX: (919) 779-2224  
info@whaleyfoodservice.com

## WHALEY FOODSERVICE REPAIRS

6418-101 AMSTERDAM WAY  
WILMINGTON, NC 28405  
(910) 791-0000  
FAX: (910) 791-6662  
info@whaleyfoodservice.com

## NORTH DAKOTA

**METRO COMMERCIAL  
SERVICE INC.**  
2857 LOUISIANA AVENUE N.  
MINNEAPOLIS, MN 55427  
(612) 546-4221  
800-345-4221  
FAX: (612) 546-4286  
minneapolis@gcssvc.com

## OHIO

**CERTIFIED SERVICE CENTER**  
890 REDNA TERRACE  
CINCINNATI, OH 45215  
(513) 772-6600  
800-543-2060  
FAX: (513) 612-6600  
sbarasch@certifiedsc.com

**COMMERCIAL PARTS & SVC.  
OF COLUMBUS**  
1150 WEST MOUND STREET  
COLUMBUS, OH 43223  
(614) 221-0057  
800-837-8327  
FAX: (614) 221-3622

**GCS SERVICE INC.**  
2830 JOHNSTOWN ROAD  
COLUMBUS, OH 43219  
(614) 476-3225  
800-282-5406  
FAX: (614) 476-1196  
columbus@gcssvc.com

**ELECTRICAL APPLIANCE  
REPAIR SVC.**  
5805 VALLEY BELT ROAD  
CLEVELAND, OH 44131  
(216) 459-8700  
800-621-8259  
FAX: (216) 459-8707  
trears@aol.com

## OKLAHOMA

**HAGAR RESTAURANT EQMT.**  
1229 W MAIN STREET  
OKLAHOMA CITY, OK 73106  
(405) 235-2184  
800-445-1791  
FAX: (405) 236-5592

# JACKSON MAINTENANCE & REPAIR CENTERS

## KRUEGER INC.

100 NE 24TH STREET  
OKLAHOMA CITY, OK 73105  
(405) 528-8883  
800-522-8069  
FAX: (405) 528-5405  
kruegers@swbell.net

## OREGON

### RON'S SERVICE

16364 SW 72ND AVE  
PORTLAND, OR 97224  
(503) 624-0890  
800-851-4118  
FAX: (503) 684-6107  
lrobinson@ronsservice.com

## PENNSYLVANIA

### A.I.S. COMMERCIAL PARTS & SERVICE

1816 WEST 26TH STREET  
ERIE, PA 16508  
(814) 456-3732  
800-332-3732  
FAX: (814) 452-4843  
aiserie@aol.com

### AFS-AUTHORIZED FACTORY SVC. INC.

940 FIRST AVE.  
CORAOPOLIS, PA 15108  
(412) 262-2330  
800-222-8767  
FAX: (412) 262-2245

### ELMER SCHULTZ SVC.

540 NORTH 3RD STREET  
PHILADELPHIA, PA 19123  
(215) 627-5400  
FAX: (215) 627-5408  
elmer2@erols.com

### FOOD SERVICE EQMT.

2101 PARKWAY SOUTH  
BROOMALL, PA 19008  
(610) 356-6900  
FAX: (610) 356-2038  
dancerule@aol.com

### GCS SERVICE INC. #44

817 N THIRD STREET  
P.O. BOX 3564  
PHILADELPHIA, PA 19123  
(215) 925-6217  
800-441-9115  
FAX: (215) 925-6208  
philadelphia@gcssvc.com

### GCS SERVICE INC. #44

4400 LEWIS ROAD  
SUITE E  
HARRISBURG, PA 17111  
(717) 564-3282  
800-367-3225  
FAX: (717) 564-9286  
harrisburg@gcssvc.com

### GCS SERVICE INC. #48

210 VISTA PARK DRIVE  
PITTSBURGH, PA 15205  
(412) 787-1970  
800-738-1221  
FAX: (412) 787-5005  
pittsburgh@gcssvc.com

### K & D PARTS AND SERVICE CO.

1833-41 N CAMERON STREET  
HARRISBURG, PA 17103  
(717) 236-9039  
800-932-0503  
FAX: (717) 238-4367  
kdparts-service@paonline.com

## RHODE ISLAND

### GCS SERVICE INC. #09

1002 WATERMAN AVE.  
EAST PROVIDENCE, RI 02914  
(401) 434-6803  
800-462-6012  
FAX: (401) 438-9400  
providence@gcssvc.com

## SOUTH CAROLINA

### WHALEY FOODSERVICE REPAIRS

126&US1  
P.O. BOX 4023  
WEST COLUMBIA, SC 29170  
(803) 791-4420  
800-877-2662  
FAX: (803) 794-4630  
info@whaleyfoodservice.com

### WHALEY FOODSERVICE REPAIRS

748 CONGAREE ROAD  
GREENVILLE, SC 29607  
(864) 234-7011  
800-494-2539  
FAX: (864) 234-6662  
info@whaleyfoodservice.com

### WHALEY FOODSERVICE REPAIRS

1406-C COMMERCE PL.  
MYRTLE BEACH, SC 29577  
(843) 626-1866  
FAX: (843) 626-2632  
info@whaleyfoodservice.com

### WHALEY FOODSERVICE REPAIRS

4740-A FRANCHISE STREET  
N. CHARLESTON, SC 29418  
(843) 760-2110  
FAX: (843) 760-2255  
info@whaleyfoodservice.com

## SOUTH DAKOTA

### GCS SERVICE INC.

2857 LOUISIANA AVENUE N.  
MINNEAPOLIS, MN 55427  
(612) 546-4221  
800-345-4221  
FAX: (612) 546-4286  
minneapolis@gcssvc.com

## TENNESSEE

### COMMERCIAL PARTS & SVC.

3717 CHERRY ROAD  
MEMPHIS, TN 38118  
(901) 366-4587  
800-262-9155  
FAX: (901) 366-4588

### COMMERCIAL PARTS & SVC.

748 FESSLERS LANE  
NASHVILLE, TN 37210  
(615) 244-8050  
800-831-7174  
FAX: (615) 244-8885  
alesco1@aol.com

### COMMERCIAL APPLIANCE SVC.

919 8TH AVENUE SOUTH  
NASHVILLE, TN 37203  
(615) 254-0906  
800-476-0906  
FAX: (615) 254-0919  
casnash@aol.com

## TEXAS

### ARMSTRONG REPAIR CENTER

5110 GLENMOUNT DRIVE  
HOUSTON, TX 77081  
(713) 666-7100  
800-392-5325  
FAX: (713) 661-0520  
gm@armstrongrepair.com

### COMMERCIAL KITCHEN REPAIR CO.

1377 N BRAZOS  
P.O. BOX 831128  
SAN ANTONIO, TX 78207  
(210) 735-2811  
800-292-2120  
FAX: (210) 735-7421  
brock@commercialkitchen.com

### GCS SERVICE INC. #90

10850 SANDEN DRIVE  
DALLAS, TX 75238-5325  
(972) 484-2954  
800-442-5026  
FAX: (972) 484-2531  
dallas@gcssvc.com

### GCS SERVICE INC. #88

8150 WESTPARK  
HOUSTON, TX 77063  
(713)785-9187  
800-868-6957  
FAX: (713) 785-3979  
houston@gcssvc.com

### STOVE PARTS SUPPLY CO.

2120 SOLANA STREET  
FORT WORTH, TX 76117  
(817) 831-0381  
800-433-1804  
FAX: (817) 834-7754  
bud@stoveparts.com

## UTAH

### LA MONICA'S RESTAURANT EQMT. SVC.

6182 SOUTH STRATLER AVENUE  
MURRAY, UT 84107  
(801) 263-3221  
800-527-2561  
FAX: (801) 263-3229  
lamonica81@aol.com

## VERMONT

### AUTHORIZED APPLIANCE SERVICENTER OF VERMONT

74 RIVER STREET  
RUTLAND, VT 05701  
(802) 775-5588  
800-874-1080  
FAX: (802) 775-9593  
suew  
@authorizedapplianceofut.com

### NORTHERN PARTS & SVC.

4874 S. CATHERINE STREET  
PLATTSBURGH, NY 12901  
(518) 563-3200  
800-634-5005  
FAX: (800) 782-5424  
info@northernparts.com

### GCS SERVICE INC. #09

180 SECOND STREET  
CHELSEA, MA 02150  
(617)889-9393  
800-225-1155  
FAX: (617) 889-1222  
boston@gcssvc.com

## VIRGINIA

### DAUBERS, INC.

7645 DYNATECH COURT  
SPINGFIELD, VA 22153  
(703) 866-3600  
800-554-7788  
FAX: (703) 866-4071  
daubers@aol.com

# JACKSON MAINTENANCE & REPAIR CENTERS

## **GCS SERVICE INC. #07**

2660 PITTMAN DRIVE  
SILVER SPRING, MD 20910  
(301) 585-7550(DC)  
(410) 792-0388(BALT)  
800-638-7278  
FAX: (301)495-4410  
dc\_baltimore@gcssvc.com

## **GCS SERVICE INC. #18**

2421 GRENOBLE RD.  
RICHMOND, VA 23294  
(804) 672-1700  
800-899-5949  
FAX: (804) 672-2888  
richmond@gcssvc.com

## **GCS SERVICE INC. #18**

5760 NORTHAMPTON BLVD.  
STE 106  
VIRGINIA BEACH, VA 23455  
(757) 464-3500  
800-476-4278  
FAX: (757) 464-4106  
virginia\_beach@gcssvc.com

## **WASHINGTON**

### **GCS SERVICE INC.**

6114 SIXTH AVENUE SOUTH  
SEATTLE, WA 98108  
(206) 763-0353  
800-211-4274  
FAX: (206) 763-5943

### **RESTAURANT APPLIANCE SERVICE**

7219 ROOSEVELT WAY, NE  
SEATTLE, WA 98115  
(206) 524-8200  
800-433-9390  
FAX: (206) 525-2890  
info@restappl.com

## **WEST VIRGINIA**

### **AFS-AUTHORIZED FACTORY SVC INC.**

RT.-1 BOX 288  
S. CHARLESTON, WV 25312  
(304) 344-8225  
800-654-4606  
FAX: (304) 344-8248

## **WISCONSIN**

### **APPLIANCE SERVICE CENTER, INC.**

2439 ATWOOD AVE  
MADISON, WI 53704  
(608) 246-3160  
800-236-7440  
FAX: (608) 246-2721  
ascmad@execpc.com

### **APPLIANCE SERVICE CENTER, INC.**

6843 W. BELOIT RD.  
WEST ALLIS, WI 53219  
(414) 543-6460  
800-236-6460  
FAX: (414) 543-6480  
ascmil@execpc.com

### **APPLIANCE SERVICE CENTER**

786 MORRIS AVE  
GREEN BAY, WI 54304  
(920) 496-9993  
800-236-0871  
FAX: (920) 496-9927  
ascfox@execpc.com

## **WYOMING**

### **METRO APPLIANCE SERVICE**

1640 S BROADWAY  
DENVER, CO 80210  
(303) 778-1126  
800-525-3532  
FAX: (303) 778-0268  
metroappls@aol.com

## **INTERNATIONAL**

### **GLOBAL PARTS AND SUPPLY**

7758 NW 72ND ST  
MIAMI, FL 33166  
(305) 885-6353

### **H.D. SHELDON AND CO**

19 UNION SQUARE, WEST  
NEW YORK, NY 10003  
(212) 627-1759  
(212) 924-6920

## **CANADA**

### **THE GARLAND GROUP**

1177 KAMATO ROAD  
MISSISSAUGA, ONTARIO  
L4W 1X4

(905) 206-8380  
SALES  
(905) 624-1419  
FAX: (905) 624-1851  
SERVICE  
800-427-6668  
FAX: 800-361-7745