

INSTRUCTION MANUAL

FOR JACKSON MODEL:

MODEL 24LT



MANUFACTURERS WARRANTY

ONE YEAR LIMITED PARTS & LABOR WARRANTY

ALL NEW JACKSON DISHWASHERS ARE WARRANTED TO THE ORIGINAL PURCHASER TO BE FREE FROM DEFECTS IN MATERIAL OR WORKMANSHIP, UNDER NORMAL USE AND OPERATION FOR A PERIOD OF (1) ONE YEAR FROM THE DATE OF PURCHASE, BUT IN NO EVENT TO EXCEED (18) EIGHTEEN MONTHS FROM THE DATE OF SHIPMENT FROM THE FACTORY.

Jackson MSC agrees under this warranty to repair or replace, at its discretion, any original part which fails under normal use due to faulty material or workmanship during the warranty period, providing the equipment has been unaltered, and has been properly installed, maintained and operated in accordance with the applicable factory instruction manual furnished with the machine and the failure is reported to the authorized service agency within the warranty period. This includes the use of factory specified genuine replacement parts, purchased directly from a Jackson authorized parts distributor or service agency. Use of generic replacement parts may create a hazard and void warranty certification.

The labor to repair or replace such failed part will be paid by Jackson MSC, within the continental United States, Hawaii and Canada, during the warranty period provided a Jackson MSC authorized service agency, or those having prior authorization from the factory, performs the service. Any repair work by persons other than a Jackson MSC authorized service agency is the sole responsibility of the customer. Labor coverage is limited to regular hourly rates, overtime premiums and emergency service charges will not be paid by Jackson MSC.

Accessory components not installed by the factory carry a (1) one year parts warranty only. Accessory components such as table limit switches, pressure regulators, pre rinse units, etc. that are shipped with the unit and installed at the site are included. Labor to repair or replace these components is not covered by Jackson MSC.

This warranty is void if failure is a direct result from shipping, handling, fire, water, accident, misuse, acts of god, attempted repair by unauthorized persons, improper installation, if serial number has been removed or altered, or if unit is used for purpose other than it was originally intended.

TRAVEL LIMITATIONS

Jackson MSC limits warranty travel time to (2) two hours and mileage to (100) one hundred miles. Jackson MSC will not pay for travel time and mileage that exceeds this, or any fees such as those for air or boat travel without prior authorization.

WARRANTY REGISTRATION CARD

The warranty registration card supplied with the machine must be returned to Jackson MSC within 30 days to validate the warranty.

REPLACEMENT PARTS WARRANTY

Jackson replacement parts are warranted for a period of 90 days from the date of installation or 180 days from the date of shipment from the factory, which ever occurs first.

PRODUCT CHANGES AND UPDATES

Jackson MSC reserves the right to make changes in design and specification of any equipment as engineering or necessity requires.

THIS IS THE ENTIRE AND ONLY WARRANTY OF JACKSON MSC. JACKSON'S LIABILITY ON ANY CLAIM OF ANY KIND, INCLUDING NEGLIGENCE, WITH RESPECT TO THE GOODS OR SERVICES COVERED HEREUNDER, SHALL IN NO CASE EXCEED THE PRICE OF THE GOODS OR SERVICES OR PART THEREOF WHICH GIVES RISE TO THE CLAIM.

THERE ARE NO WARRANTIES, EXPRESSED OR IMPLIED, INCLUDING FOR FITNESS OR MERCHANTABILITY, THAT ARE NOT SET FORTH HEREIN, OR THAT EXTEND BEYOND THE DURATION HEREOF. UNDER NO CIRCUMSTANCES WILL JACKSON MSC BE LIABLE FOR ANY LOSS OR DAMAGE, DIRECT OR CONSEQUENTIAL, OR FOR THE DAMAGES IN THE NATURE OF PENALTIES, ARISING OUT OF THE USE OR INABILITY TO USE ANY OF ITS PRODUCTS.

ITEMS NOT COVERED

This warranty does not cover cleaning or deliming of the unit or any component such as, but not limited to, wash arms, rinse arms or strainers at anytime. Nor does it cover adjustments such as, but not limited to timer cams, thermostats or doors, beyond 30 days from the date of installation. In addition, the warranty will only cover the replacement of wear items such as curtains, drain balls, door guides or gaskets during the first 30 days after installation. Also, not covered are conditions caused by the use of incorrect (non-Commercial) grade detergents, incorrect water temperature or pressure, or hard water conditions.

T A B L E O F C O N T E N T S

BEFORE CONNECTING, OPERATING OR ADJUSTING THIS PRODUCT, PLEASE READ THIS INSTRUCTION MANUAL CAREFULLY AND COMPLETELY.

FOR YOUR CONVENIENCE, THIS MANUAL CONSISTS OF THE FOLLOWING SECTIONS IN THIS ORDER:

-
1. INSTALLATION
 2. OPERATION
 3. SPECIFICATIONS
 4. CARE AND CLEANING
 5. TROUBLESHOOTING
 6. ILLUSTRATED PARTS LIST
 7. WARRANTY
-
-

G E N E R A L

SAFETY PRECAUTIONS

Never try to repair or replace any part of the dishwasher unless it is specifically recommended in this manual. All servicing should be done by a factory authorized service technician during warranty period, there are no user serviceable parts. Safety precautions in this manual are preceded by the words warning or caution and are very important. Warning means there is the possibility of personal injury to yourself or others. Caution means there is the possibility of damage to the unit.

CERTIFICATION



The UL Mark on this product indicates this product is Listed with the Underwriters Laboratory. This agency conducts tests and evaluations of products for compliance to UL Standards for Safety.



The NSF Seal is widely recognized as a sign that the article to which it is affixed complies with all public health and safety codes for foodservice equipment.

PRODUCT RECORD

For future use, please record the information in the spaces provided below.

MODEL NUMBER _____

SERIAL NUMBER _____

DATE INSTALLED _____

DEALER _____

I N S T A L L A T I O N

GENERAL

The Model 24LT Low-Temperature Chemical Sanitizing Dishmachine requires 50 Parts Per Million of Chlorine be dispensed into the final rinse water for proper sanitizing of the ware.

Installation of the Sanitizer, Detergent and Rinse Dispensing equipment connections must be made to back of machine before installing dishmachine undercounter or where installation will prevent access to back of machine.

Dishmachines not installed undercounter must be leveled. Adjust machine level by screwing the (feet) levelers in or out to raise or lower corners of machine. Level back and front, then left and right sides of machine.

Refer to the Specification section of this manual for all Dimensional requirements for installation

COMPLETE THE INSTALLATION CHECKLIST AFTER INSTALLATION IS COMPLETED

PLUMBING CONNECTIONS

All Plumbing connections must comply with all Sanitary, Safety and Plumbing Codes. CAUTION: Flush hot water supply lines prior to connection to dishmachine to remove all debris from lines.

S T E P S :

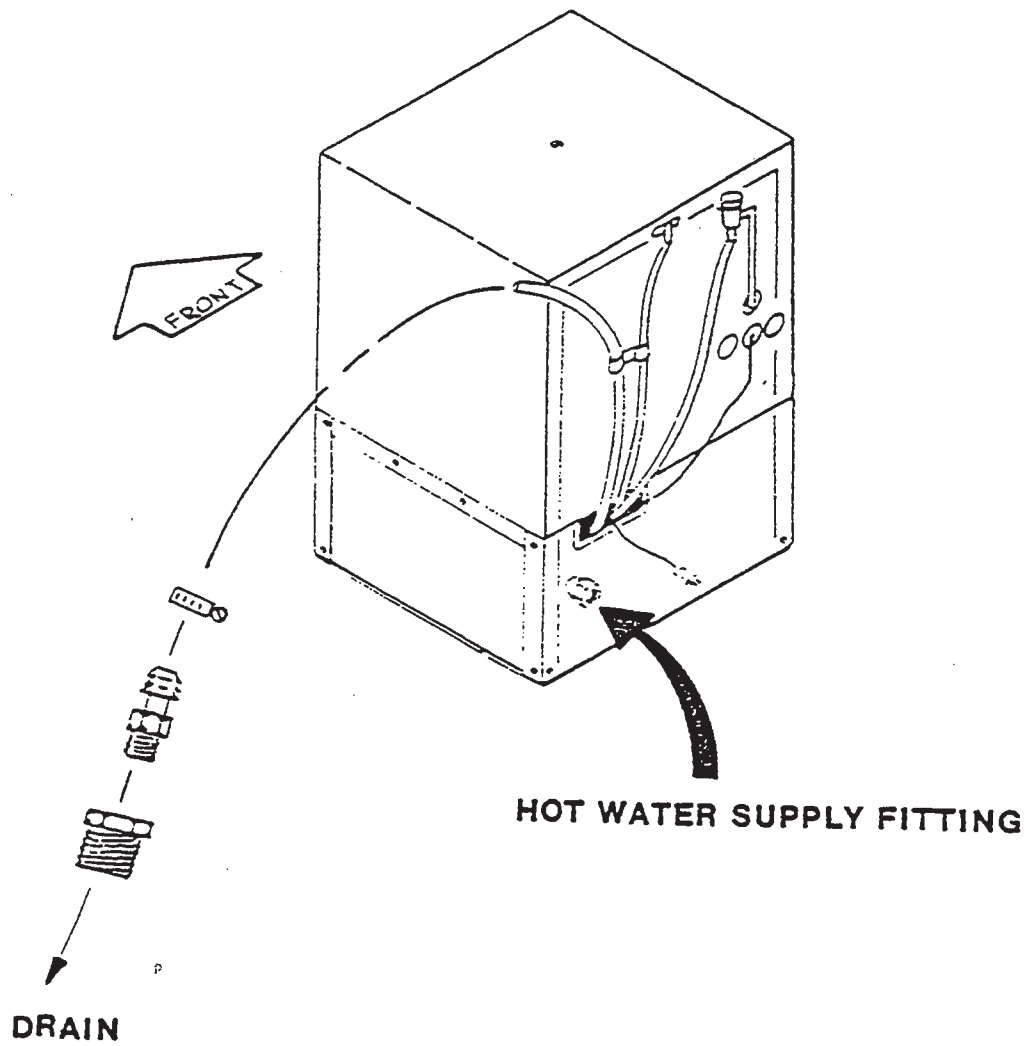
REFER TO FIGURE [1]

1. Install a 1/2" (MIN.) supply line to the dishmachine hot water incoming 1/2" NPT Female fitting as shown in Figure [1]. Manufacturer recommends using a flexible copper 1/2" supply line with sufficient length looped at rear of dishmachine to allow machine to be removed for servicing.

NOTE: Supply line must have capacity to supply 43.7 gallons per hour of 120 F.(MIN.) of hot water at 20 PSI Flow pressure. Manufacturer recommends 140 F. hot water for best results.

NOTE: If water flow pressure is greater than 20 PSI, install a pressure regulator and adjust to 20 PSI Flow pressure. If flow pressure is less than 20 PSI, an adjustment must be made to the machine's Timer to increase the Fill cycle time during the Fill cycle so machine can fill to it's proper water level. See Timer Adjustment.

FIGURE 1



I N S T A L L A T I O N

DRAIN CONNECTION

The Dishmachine is factory equipped with a Pump Drain system capable of pumping the drain water to a height of 24 inches from the floor. Approximately six (6) feet of drain hose is provided and attached to rear of machine. A hose barb and clamp are also provided along with a 1-1/2" PVC Threaded Adaptor for convenient installation to nearest dishwasher "Y".

CAUTION: Drain hose is factory mounted to rear of dishmachine at MAXIMUM height of (24") at which drain water can be pumped. DO NOT remove or relocate hose to higher level from which it is factory located. Do not elevate hose higher from this level of machine.

S T E P S :

REFER TO FIGURE [1]

1. Install the 1-1/2" PVC threaded adaptor into dishmachine "Y" using teflon pipe tape as shown in Figure [1].
2. Install the threaded hose barb provided into adaptor.
3. Cut dishmachine drain hose to appropriate length to reach the hose barb and install to barb using the hose clamp provided.

NOTE: Leave sufficient length of hose at back of machine to allow machine to be moved forward for servicing.

PROCEED TO ELECTRICAL CONNECTIONS

I N S T A L L A T I O N

ELECTRICAL CONNECTION

WARNING: All wiring connections must conform to the local and national electrical codes. Refer to machine electrical data plate located on front of machine and Specification section of this manual for proper electrical ratings.

POWER CORD

The dishmachine is provided with six (6) feet of power cord so connection can be made to nearest receptacle. Do not alter or remove this power cord in any manner.

S T E P S :

1. Plug machine's power cord into convenient wall receptacle nearest machine which has service breaker rated for the machine's total load amperes.

WARNING: Wall receptacle to which machine's power cord is connected MUST have proper electrical ground. Test for proper electrical grounding.

UNDERCOUNTER INSTALLATION

Dishmachines installed undercounter without feet (adjustable levelers) must be sealed to floor by using sealer such as RTV, SILICONE or other non-toxic sealers.

S T E P S :

1. Once machine is in permanent position, seal base of machine to floor with sealer along edges of sides.

PAN STRAINER

Install Pan Strainer provided into wash/rinse tank.

SPRAY ARMS

Install upper and lower spray arms by inserting spindle end of arm into hub and turn clockwise while applying pressure.

PROCEED TO CHEMICAL DISPENSING EQUIPMENT

I N S T A L L A T I O N

CHEMICAL DISPENSING EQUIPMENT

The Model 24LT is equipped with a factory installed Sanitizer pump for accurately dispensing sanitizer into the final fresh water rinse. A Detergent and Rinse pump dispenser is not provided with this dishmachine and must be installed prior to undercounter installation. An electrical connection point and signal is provided for the installation of a Detergent and Rinse dispensing pump. Refer to the following instructions for proper installation of this equipment.

SANITIZER DISPENSING

S T E P S :

1. Install the Sanitizer "WHITE" plastic suction tube end and the Sanitizer "CLEAR" plastic probe tube end into the sanitizer container bottle so both tube ends touch bottom of bottle. Tubes are located at rear of machine and must be routed to bottle in such a manner as not to crimp or bend sharply.

NOTE: The clear plastic probe tube installed above is used to constantly measure sanitizer solution level in bottle. When solution level in bottle drops below two (2) inches, an indicator light located in the prime switch will light up to provide a signal to the operator that the sanitizer bottle is low.

PRIME SWITCH

The sanitizer priming switch is located on the control panel. This prime switch will only activate the factory installed sanitizer pump, so priming of the sanitizer line to the injection point can be accomplished. The sanitizer injection fitting is located inside of dishmachine, directly above pan strainer at rear wall.

S T E P S :

1. Press prime switch while observing the injection fitting inside of machine and release switch when solution is primed.

PROCEED TO SANITIZER DISPENSING ADJUSTMENT

I N S T A L L A T I O N

SANITIZER DISPENSING ADJUSTMENT

The sanitizer dispenser pump is factory pre-set to accurately dispense approximately 7.5 milliliters (50 parts per million) sanitizing agent based on an 8.4 % solution of Sodium Hypochlorite.

Adjustment of the sanitizer dispenser pump timer may be necessary depending on the type and sanitizer solution used. Consult your chemical representative for further details. Refer to Timer Adjustment section of this manual for proper adjustment of sanitizer dispensing.

DETERGENT AND RINSE AGENT DISPENSING EQUIPMENT

The Model 24LT is a Dump-and-Fill type dishmachine which dumps the wash tank water and refills with fresh water each cycle. This type of dishmachine cannot use the concentration probe often used in the wash tank to control detergent injection.

The dishmachine will supply an electrical signal of 115 volts during the wash and rinse cycle for detergent and rinse agent equipment connection. The duration of this signal can be increased or decreased to achieve proper solution in wash/rinse water. Refer to Timer Adjustment section of this manual for proper procedures for increasing or decreasing detergent and rinse agent dispensing duration.

NOTE: The Detergent dispensing timer is factory set to dispense approximately 12 milliliters of detergent during the wash cycle. The Rinse agent dispensing timer is factory set to dispense approximately 5 milliliters of rinse additive during the rinse cycle.

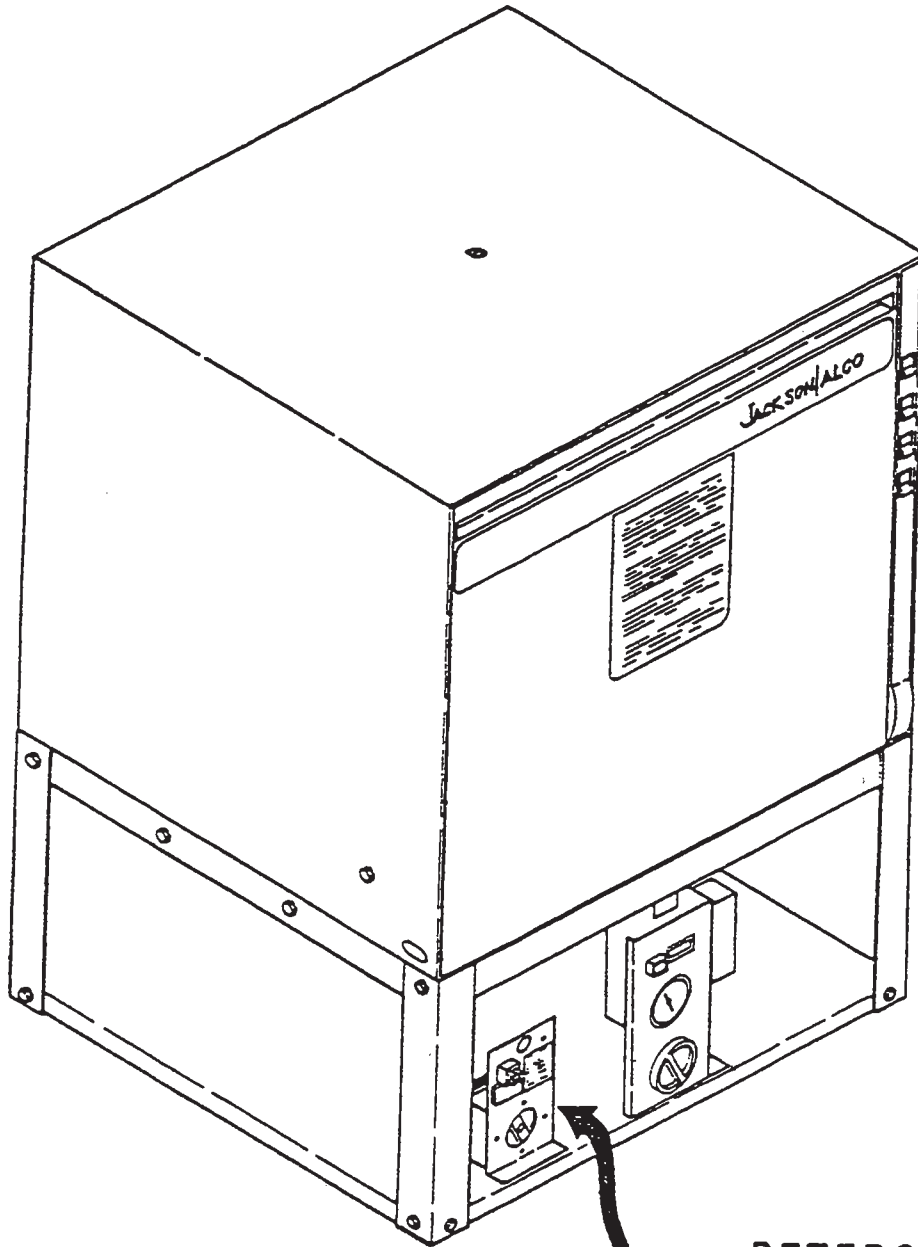
S T E P S : DISCONNECT POWER TO MACHINE

1. Remove and discard the plastic bulkhead plug provided for installation of detergent and/or rinse injection fitting at back of machine.
2. Install detergent and/or rinse injection fitting into 7/8" diameter hole provided.
3. Remove front lower kick panel from dishmachine to access electrical connection point for dispensing equipment. Dishmachine door must be opened slightly for upward removal of lower kick panel.
4. Locate the electrical terminal and fuse block as shown in Figure [2]. Using decal provided at block, make appropriate connections and install fuses as specified.

CAUTION: Insure that a 3AG "SLO-BLO" 2.5 AMP MAX. type fuse is used and proper electrical ground is made.

PROCEED TO TIMER ADJUSTMENT SECTION

FIGURE 2



DETERGENT/RINSE
DISPENSING
EQUIPMENT
CONNECTION

T I M E R A D J U S T M E N T S

GENERAL

The timer is a self-contained (frame mounted) timer of the repeating cycle type. It is mounted behind the lower kick panel, where it controls the automatic functions of the machine. The timer motor operates on 115 volts, 60 cycles, taking (2) minutes to complete one full revolution. There are (7) micro switches which are controlled by rotating cams driven by the timer motor. Four (4) of the cams are adjustable and can be adjusted to either lengthen or shorten the desired function.

WARNING: Turn power off to machine when making all timer adjustments.

The timer cams are preset at the factory but may have to be readjusted for different conditions of the country and for the different brands of detergent, rinse additive and sanitizing solutions. Both sides of the four adjustable cams are hex-shaped for easy adjustment using wrenches provided. Two (2) wrenches are provided for timer adjustments and are taped to base plate directly below timer.

PLEASE READ THE OPERATION INSTRUCTIONS BEFORE MAKING TIMER ADJUSTMENTS

S T E P S : REFER TO FIGURE 3

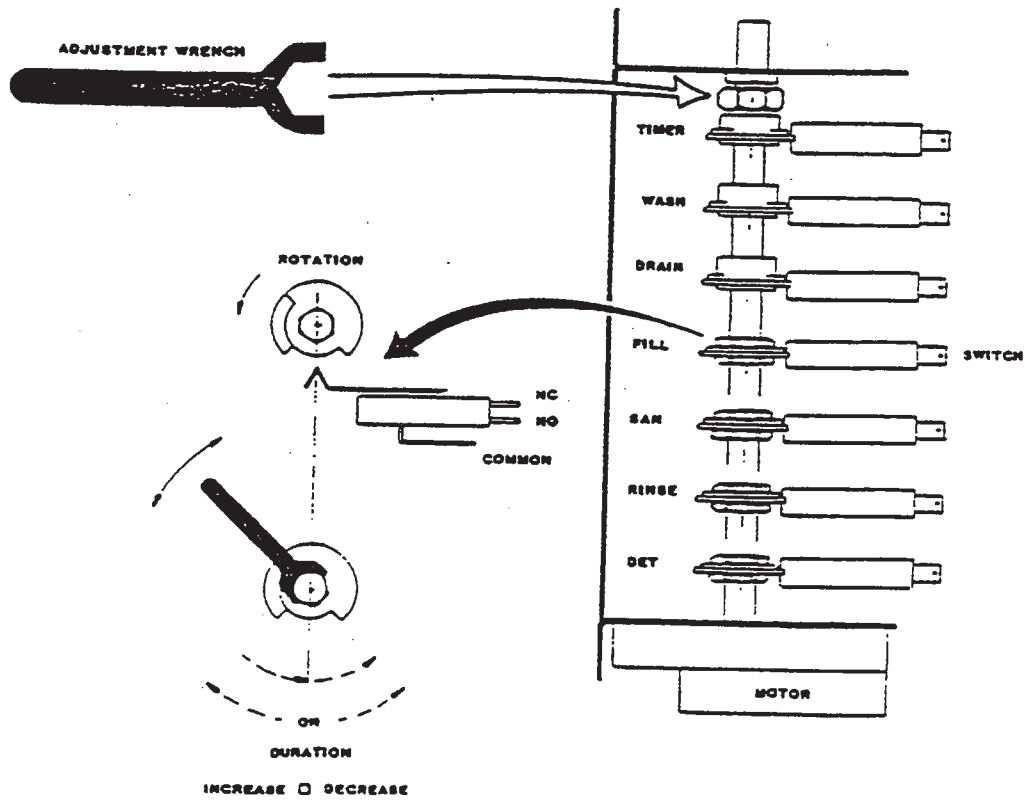
1. To make adjustment, place one wrench on timer shaft nut as shown in figure 5 and hold stationary.
2. While holding timer shaft stationary, place other wrench provided on hex side of cam to which adjustment is being made and increase or decrease the gap/detent length.

NOTE: Increasing or decreasing the gap/detent length will make the particular function longer or shorter, i.e., need more detergent during wash cycle, increase gap/detent to make detergent injection function longer, thereby increasing the amount of detergent dispensed into wash water.

PROCEED TO NEXT PAGE

FIGURE 3

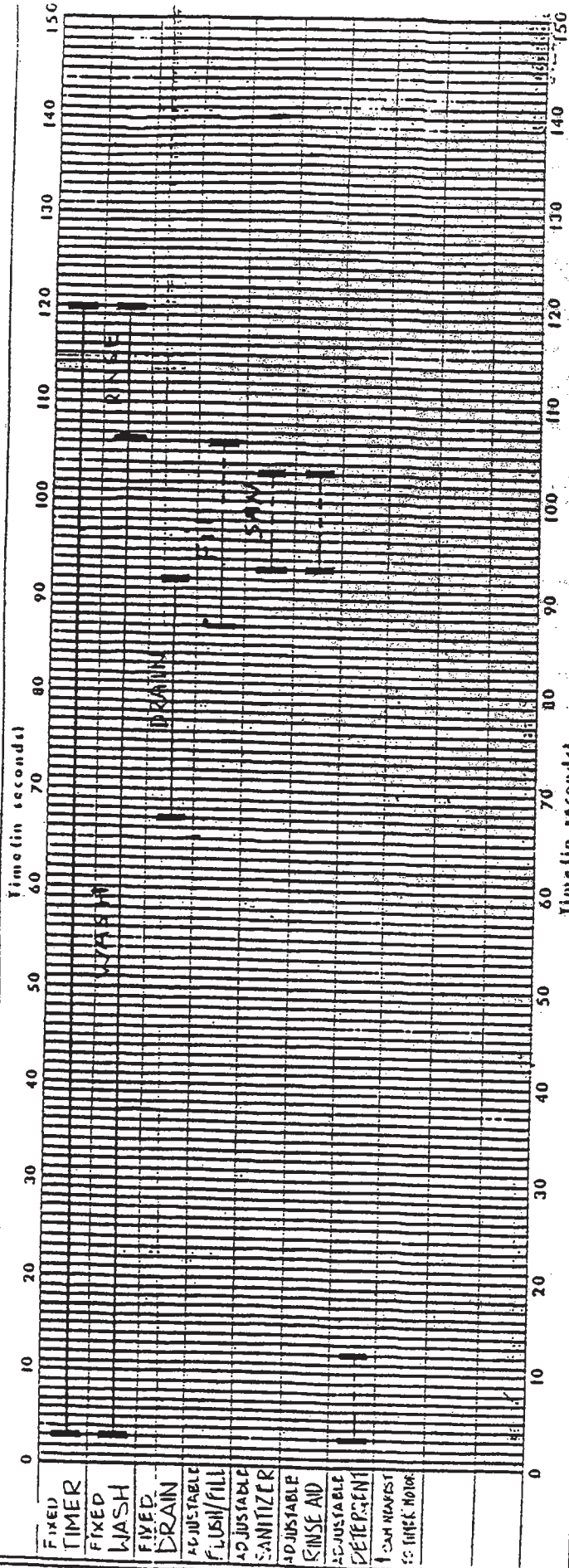
TIMER ADJUSTMENT



TIMING CHART

24LT

MACHINE CYCLE SEC'S



T I M E R A D J U S T M E N T S

TIMER FUNCTIONS

All timer functions are marked on the timer frame adjacent to each timer cam controlling that function.

The different cam functions are:

- TIMER "Not adjustable" Fixed cam that controls the total length of the cycle, activated by the "START" switch.
- WASH "Not adjustable" Fixed cam that controls the wash cycle length.
- DRAIN "Not adjustable" Fixed cam that controls the draining of the tank during the drain/flush function.
- FILL "ADJUSTABLE FUNCTION" Adjustable cam that controls the amount of hot water used to fill the wash/rinse tank up to the specified level marked on tank. Factory set to fill tank up to specified water level using 20 PSI Flow pressure.

HIGH WATER PRESSURE: For water flow pressures higher than 20 PSI, install a water pressure regulator and adjust to 20 PSI Flow pressure.

LOW WATER PRESSURE: For water flow pressures lower than 20 PSI, adjust the Fill cycle length by increasing the gap/detent of the Fill Cam to make the fill function longer. This will lengthen the fill time and allow the low water flow pressure sufficient time to fill up to the specified level on tank.

CAUTION: The dishmachine cannot function properly on water level lower than what is specified, adjustment of timer fill function must be made to compensate for low flow pressures.

High flow pressure must be properly regulated or could occur.

PROCEED TO NEXT PAGE

T I M E R A D J U S T M E N T S

SAN "ADJUSTABLE CAM" It operates the sanitizer pump that dispenses the sanitizer solution. By adjusting this cam you can either increase or decrease your amount of sanitizer solution. The cam is factory set to dispense 7.5 milliliters (50 parts per million) of sanitizing agent based on an 8.4 % solution of sodium hypochlorite. Consult your chemical representative for further details on brand/type of chemical used and solution.

PRIMING: The sanitizer prime switch is located on the control panel and is provided for moving the sanitizer from it's bottle to the injection fitting.

NOTE: The sanitizer low-level probe installed in the sanitizer container/bottle will light an indicator lamp located in the prime switch when sanitizer solution level falls below two (2) inches.

RINSE "ADJUSTABLE CAM" It provides a 115 volt signal source for installation of an aftermarket Rinse dispenser. The signal will activate the rinse dispenser during the rinse cycle. The cam is factory set to dispense 5 milliliters of rinse agent. By adjusting this cam you can either increase or decrease the amount of additive injected.

DET "ADJUSTABLE CAM" It provides a 115 volt signal source for installation of an aftermarket Detergent dispenser. The signal will activate the detergent dispenser during the wash cycle. The cam is factory set to dispense 12 milliliters of detergent. By adjusting this cam you can either increase or decrease the amount of detergent injected.

COMPLETE THE INSTALLATION CHECKLIST BEFORE PROCEEDING TO OPERATION

INSTALLATION CHECKLIST

Please check off the following items as they are completed, all items must be completed and checked off before proceeding to operation.

In the event that your machine has missing parts or installation information is needed, please call authorized service agency or call telephone number provided on cover of this manual.

IS NON-UNDERCOUNTER MACHINE LEVELED	YES	<input type="checkbox"/>
IS UNDERCOUNTER MACHINE SEALED TO FLOOR	YES	<input type="checkbox"/>
IS DRAIN HOSE CONNECTED TO DISHWASHER "Y" PLUMBING	YES	<input type="checkbox"/>
IS DRAIN HOSE UNDER THE MAXIMUM DRAIN HEIGHT OF 24 INCHES	YES	<input type="checkbox"/>
IS DRAIN HOSE SECURED TO DISHWASHER "Y" USING CLAMP	YES	<input type="checkbox"/>
IS DRAIN HOSE ROUTED WITHOUT SHARP BENDS OR CRIMPED	YES	<input type="checkbox"/>
IS SERVICE BREAKER RATED FOR TOTAL AMP LOAD OF 10 AMPS	YES	<input type="checkbox"/>
IS SERVICE BREAKER MARKED FOR DISHWASHER	YES	<input type="checkbox"/>
IS WALL RECEPTACLE PROPERLY GROUNDED	YES	<input type="checkbox"/>
IS LINE POWER 115-120 VOLTS 60 CYCLE	YES	<input type="checkbox"/>
IS INCOMING HOT WATER MIN. 120 F.	YES	<input type="checkbox"/>
IS WATER LEVEL AT MARK IN TANK	YES	<input type="checkbox"/>
IS PRESSURE REGULATOR INSTALLED FOR PRESSURE ABOVE 20 PSI	YES	<input type="checkbox"/>
IS FLEXIBLE COPPER LINE USED FOR INCOMING WATER LINE	YES	<input type="checkbox"/>
IS PAN STRAINER INSTALLED IN TANK	YES	<input type="checkbox"/>
IS UPPER AND LOWER SPRAY ARMS INSTALLED	YES	<input type="checkbox"/>
IS SANITIZER SUCTION TUBE INSTALLED IN BOTTLE	YES	<input type="checkbox"/>
IS SANITIZER LOW LEVEL PROBE INSTALLED IN BOTTLE	YES	<input type="checkbox"/>
IS DETERGENT DISPENSER INJECTOR FITTING/TUBING INSTALLED	YES	<input type="checkbox"/>
IS DETERGENT SUCTION TUBE INSTALLED IN BOTTLE	YES	<input type="checkbox"/>
IS ELECTRICAL CONNECTION FOR DETERGENT EQ. COMPLETED	YES	<input type="checkbox"/>
IS PROPER FUSE INSTALLED FOR DETERGENT EQUIPMENT	YES	<input type="checkbox"/>
IS DETERGENT EQUIPMENT PROPERLY GROUNDED TO DISHMACHINE	YES	<input type="checkbox"/>
IS DETERGENT SOLUTION CORRECT	YES	<input type="checkbox"/>
IS RINSE AGENT DISPENSER INJECTOR FITTING/TUBING INSTALLED	YES	<input type="checkbox"/>
IS RINSE AGENT SUCTION TUBE INSTALLED IN BOTTLE	YES	<input type="checkbox"/>
IS ELECTRICAL CONNECTION FOR RINSE EQUIPMENT COMPLETED	YES	<input type="checkbox"/>
IS PROPER FUSE INSTALLED FOR RINSE EQUIPMENT	YES	<input type="checkbox"/>
IS RINSE EQUIPMENT PROPERLY GROUNDED TO DISHMACHINE	YES	<input type="checkbox"/>
IS RINSE AGENT SOLUTION CORRECT	YES	<input type="checkbox"/>
IS CYCLE TIMES CORRECT TO TIMING CHART	YES	<input type="checkbox"/>

O P E R A T I N G I N S T R U C T I O N S

GENERAL

Please read the following operating instructions carefully and completely. Proper operation of your Model 24 LT will insure clean and sanitized ware.

The Model 24 LT Low-Temperature Chemical Sanitizing Dishmachine requires 50 Parts per Million of Chlorine be dispensed into the final rinse water for proper sanitizing of the ware. Use prime switch to prime line at start-up.

MACHINE OPERATIONAL REQUIREMENTS

WASH/RINSE water temperature must be a MINIMUM of 120 Degrees F. when operating the dishmachine.

NOTE: If unit is not operated for extended periods of time, the water temperature in the wash/rinse tank will fall below the 120 F. MIN. required. If so, drain and refill with MIN. 120 F. hot water.

OPERATING CYCLE TIMES

A complete Wash/Rinse operating cycle for the Model 24 LT lasts (2) minutes. It includes:

WASH - 66 SECONDS PER CYCLE
DWELL - 33 SECONDS PER CYCLE (drain and flush)
RINSE - 18 SECONDS PER CYCLE

WARE PREPARATION

1. Scrape dishes thoroughly.
2. Pre-wash by soaking or spraying with a pre-rinse hose.
3. Place dishes and cups in dish rack; cups, upside down.
4. Place glasses and silverware in combination glass silverware rack; glasses, upside down. Scatter silverware loosely on bottom. Do not put glasses on top of silverware.

NOTE: Silverware should be washed upright in a special compartment silverware rack for best results.

PROCEED TO NEXT PAGE FOR OPERATING INSTRUCTIONS

O P E R A T I N G I N S T R U C T I O N S

MACHINE OPERATION

TO FILL (START-UP)

S T E P S :

1. Press Power Switch to "ON" position, red lamp will light.
2. Remove Strainer Pan inside and press and hold the Fill Switch until water reaches level marked on tank. Replace strainer pan. Never operate machine without water.

TO WASH

1. Install upper and lower spray arms.
2. Check chemical bottles for adequate supply.

NOTE: Low Sanitizer Lamp in Prime Switch will light when Sanitizer level in bottle is "LOW".

3. Insert Dish Rack and close door.
4. Press Start Switch and hold for approximately (3) seconds and release, red lamp will light and cycle will start automatically, light will go out when cycle is complete.

NOTE: If door of machine is opened during cycle, all machine functions will stop. When door is closed, cycle will resume automatically where stopped.

TO DRAIN AT END OF DAY/MEALTIME

1. Press and hold Drain Switch until water in tank is Drained completely out.
2. Clean Strainer Pan and replace.
3. Remove Drain Pump cleanout cap and clean out pump, replace

CARE AND CLEANING

DAILY (2-3 times) OR AS NEEDED

1. Clean the Strainer Pan daily or as needed to remove debris from strainer openings.

NOTE: It is very important that the strainer pan is always clean.

2. Clean the Drain Pump daily or as needed to remove debris from inside of pump housing. Drain machine completely and remove cap and clean, replace cap firmly.

WEEKLY OR AS NEEDED

1. Clean the Upper and Lower spray arms weekly or as needed. Remove and disassemble spray arms as shown in Figure [6].

Remove end plugs and flush or clean with a tube brush.

Clean spindle and other parts by either soaking or brushing with deliming solution.

2. Remove all lime and corrosion deposits from machine.

Fill machine and place one cup of de-liming compound into water. The compound is available through your detergent supplier.

Run machine through complete cycle and examine the interior, repeat if needed. Drain machine and refill, run machine through another cycle to flush system completely.

YEARLY OR AS NEEDED

1. Clean the incoming hot water "Y" Strainer yearly or as needed.

CAUTION: Turn off incoming hot water to machine and relieve the pressure in line by pressing fill switch. Remove plug and clean wire screen.

 T R O U B L E S H O O T I N G

PROBLEM	CAUSE	SOLUTION
Machine does not operate (power switch light off)	Power cord unplugged	Check power cord
	Circuit breaker tripped	Reset breaker
Machine does not operate (power switch light on)	Door open on machine	Close door
	Machine 5 AMP circuit breaker tripped	Reset
	Faulty Start Switch	Test switch
	Faulty Timer Motor	Test motor
	Faulty Timer Switch	Test switch
	Loose, disconnected or broken wire	Check wiring
Will not Fill when depressing Fill switch (power light on)	Faulty or obstructed incoming solenoid	Test and check solenoid
	Faulty Fill Switch	Test switch
	No water pressure	Test pressure
	Loose, disconnected or broken wire	Check wiring
Spray Arms spray water but do not rotate or spray is very weak	Full of food particles	See care and cleaning of spray arms
Wash/Rinse motor does not operate	Motor overload tripped	Contact service agency
	Faulty Motor	Test motor
	Faulty Motor contactor	Test contactor
	Faulty Timer	Test timer
Sanitizer will not prime when depressing prime switch	Faulty Prime switch	Test switch
	Faulty Sanitizer pump	Test pump
	Defective Sanitizer pump suction tubing, pinch tube	Check and replace
Machine will not Drain when depressing the Drain switch	Air gap in drain motor	Clean pump vent hole
	Faulty or clogged Drain valve	Check and test val.

24 SERIES

DISHWASHERS

SPECIFICATIONS



POWER / CONNECTIONS

Pump Motor	3/4 HP
Pump Capacity	50 GPM
Electrical Ratings:	
115 Volts / 60 Hz / 1 Phase	
Total Load	10 Amps
Water Requirements:	
Minimum Water Inlet Temperature	140 °F
Gallons Per Hour	43.7
Gallons Per Rack	1.8
Flow Pressure Required	20 PSI
Waterline Size Required	1/2"
Recommended Drainline Size	1-1/2"

PERFORMANCE / CAPACITIES

Operating Capacities:	
Racks Per Hour	24
Dishes Per Hour	600
Glasses Per Hour	600
Standard Racks Supplied:	
19-3/4" X 19-3/4" Dish (peg)	1
19-3/4" X 19-3/4" Combination (flat)	1
Operating Cycle Times:	
Wash Time - seconds	66
Dwell Time - seconds	33
Rinse Time - seconds	18
Total Cycle Time - minutes	2

DIMENSIONS

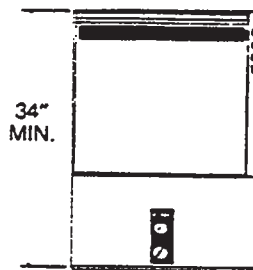
Height-minimum	34"
Height-maximum	35"
Width	24"
Depth	25"
Wall Clearance-minimum	2-1/2"
Maximum Inside Clearance	15"

Wash/Rinse Tank:

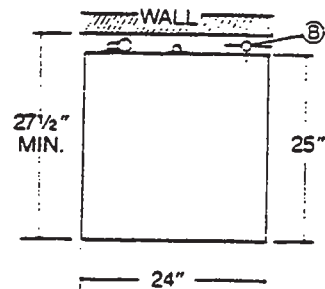
Capacity - gallons	1.6
Temperature - recommended	140 °F
NSF minimum	120 °F
Shipping Weight - pounds	200
Carton Size	30" x 30" x 38"

LEGEND TO DRAWING

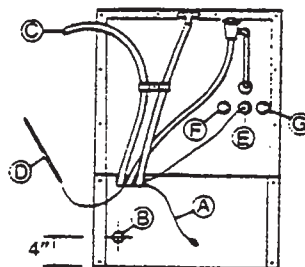
- A. Electrical Cord - 5-1/2 feet with standard duplex 125 Volt 15 Amp (NEMA Style 5-15) plug
- B. Water Inlet - 1/2" female pipe thread. Requires 140 °F incoming water supply.
- C. Drain Hose - 1 1/16" inside diameter hose is 6 feet long and supplied with a 1-1/2" MPF adapter
- D. Sanitizer supply tube
- E. Sanitizer dispensing point
- F. Detergent dispensing point for connection of dispensing equipment by others.
- G. Rinse Agent dispensing point for connection of dispensing equipment by others.



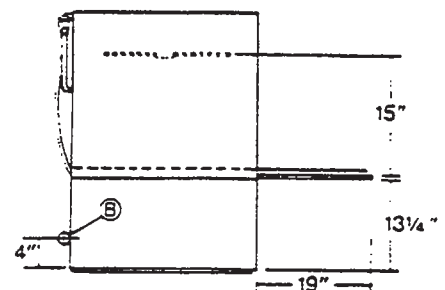
FRONT VIEW



TOP VIEW



REAR VIEW



LEFT SIDE VIEW

Jackson[®] Products Company

FACTORY SERVICE BULLETIN #144

JUNE 26, 1990

SUBJECT: MODEL 24LT DOOR HINGE SPRING P/N-0048110

GENERAL: DOOR HINGE SPRING KIT P/N-7000111 WILL REPLACE P/N-0048110 SPRING AND ALSO SPRING KIT P/N-0048106. THESE PARTS WILL NO LONGER BE AVAILABLE. THE NEW SPRING KIT P/N-7000111 MUST BE INSTALLED WHEN REPLACING ALL P/N-0048110 SPRINGS AND P/N-0048106 SPRING KITS - NO PARTS ARE INTERCHANGEABLE. THE NEW DOOR SPRING HAS BEEN RE-ENGINEERED TO IMPROVE DURABILITY AND RELIABILITY.

THE NEW DOOR SPRING INCLUDED IN P/N-7000111 SPRING KIT WILL NOT RECOIL THE DOOR COMPLETELY CLOSED AS THE ORIGINAL SPRING WOULD. THE NEW SPRING WILL ONLY SUPPORT THE DOOR'S WEIGHT. IN ADDITION TO THE NEW SPRING, A BALL PLUNGER LATCH MECHANISM IS INSTALLED IN THE TOP OF DOOR TO HOLD THE DOOR IN THE CLOSED POSITION.

THIS CHANGE WILL BE A RUNNING CHANGE WITHOUT OBSOLESCENCE OF ANY FIELD INVENTORY. ALL ORDERS FOR P/N-0048110 AND 0048106 WILL BE REPLACED WITH P/N-7000111 AT THIS TIME.

INSTALLATION

THE NEW TORSION SPRING IS NOT TENSIONED OR LOADED AS THE ORIGINAL SPRING. IT IS ONLY NECESSARY TO TWIST SPRING AXLE SLIGHTLY TO INSERT AXLE INTO DOOR HINGE. PLEASE FOLLOW INSTALLATION INSTRUCTIONS PROVIDED WITH KIT.

PARTS PROVIDED WITH NEW SPRING KIT:

- 1) TORSION SPRING
- 2) AXLE
- 3) STAINLESS STEEL BUSHING
- 4) NYLON AXLE BUSHING
- 5) BALL PLUNGER ASSEMBLY
- 6) BALL PLUNGER MOUNTING RING
- 7) INSTALLATION INSTRUCTIONS

TOOLS REQUIRED:

- 1) DRILL
- 2) 3/8" DRILL BIT
- 3) SCREWDRIVER
- 4) PLIERS
- 5) 3/4" OPEN END WRENCH
- 6) 1" OPEN END WRENCH

TORSION SPRING ASSEMBLY

P/N- 7000111

PROCEDURE:

- * Loosen #10 Screw and pull the screw half way thru the #9 Nylon Spacer.
- * Place the #12 Spring Bushing into the #5 Spring with the spring's center bar in the bushing's slot.
- * Insert the spring's hook around the nylon spacer; place the spring and spring bushing ass'ly into #4 Electric Box Channel; and tighten the #10 screw in place.
- * Insert the #3 Bushing and #2 axle thru the #4 Electric Box Channel into the #12 Bushing's square hole.
- * Place the Right Hinge in a vertical position on the #2 axle.
- * Place a 1" open end wrench on the end of the hinge and rotate it 90 degrees and then place a 3/4" wrench on the hinge offset. Allow the 1" wrench to return to the vertical position. The 3/4" wrench will hold the hinge in place.
- * Insert the left hinge hole on the left axle and adjust it at the same angle as the right hinge.
- * Slide the door onto the both hinges and then open the door. The 3/4" wrench can now be removed.
- * Place screws in place thru the hinges and into the door.
- * Using the hinge spacers adjust the door so there is a 1/8" space between hood and door's top edge and the sides centered.
- * Tighten all screws.

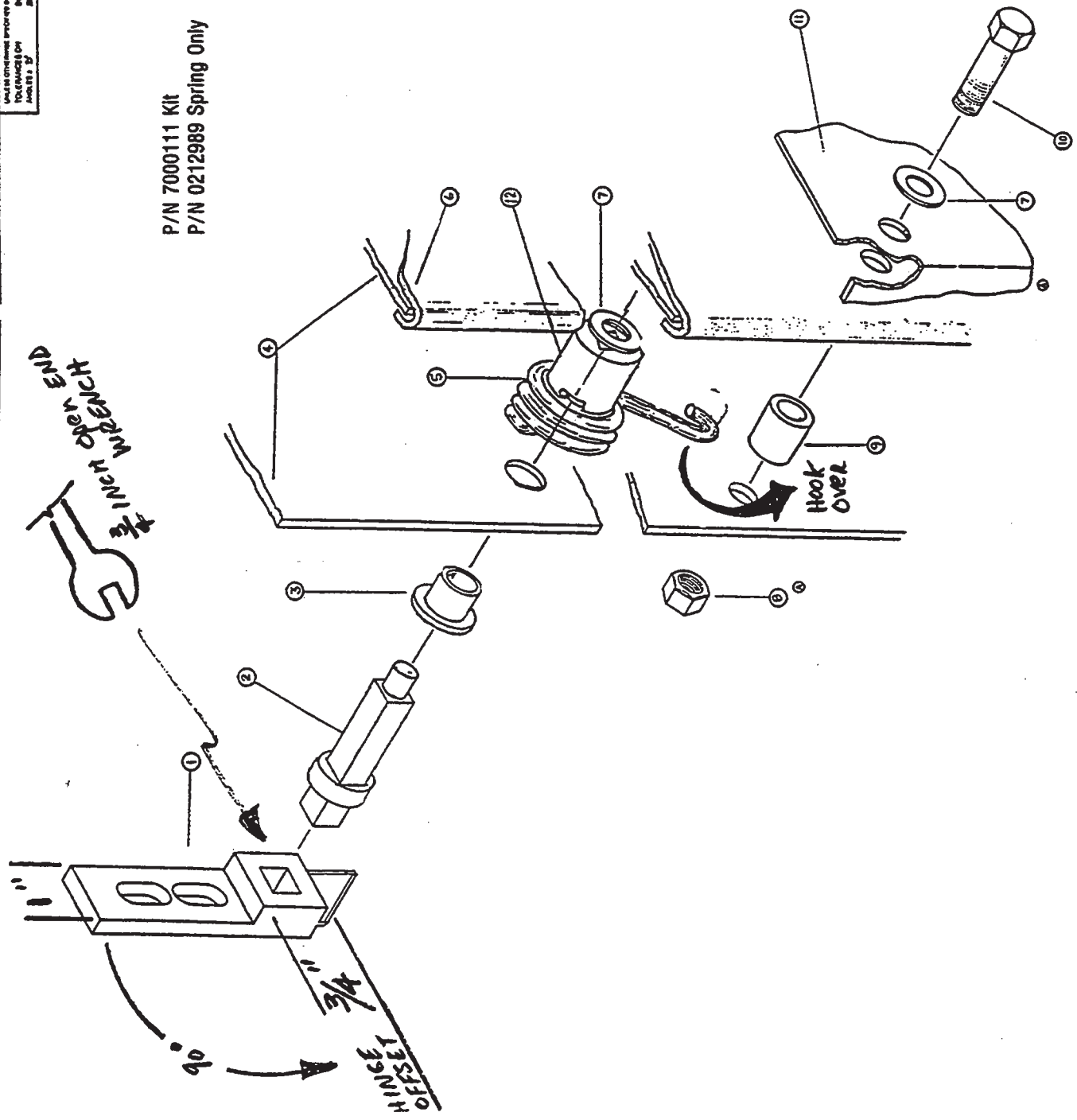
NOTE: THIS SPRING ASSEMBLY IS DESIGNED TO COUNTER BALANCE THE DOOR'S WEIGHT ONLY AND SEE THE BALL LATCH ASSEMBLY TO HOLD THE DOOR IN THE CLOSED POSITION

THIS SPRING WILL NOT RECOIL DOOR CLOSED - AS ORIGINAL SPRING WOULD.

QTY	NUMBER	QTY	NO.	DESCRIPTION
1	1	1		HINGE RIGHT
1	2	1		AXLE
1	3	1		BUSHING
1	4	1		ELECTRIC BOX COVER
1	5	1		SPRING
1	6	1		HOOD
1	7	2		1/4 5/8 WASHER
1	8	1		LOCK PLATE
1	9	1		1/4-20 LOCKNUT
1	10	1		NON SPRK
1	11	1		SCREW 1/4 x 1 1/4
1	12	1		TUB ASS'Y
1	13	1		SPRING BUSHING

THIS KIT IS INTENDED FOR USE ON ALL MODELS OF JACKSON PRODUCTS CO. AND IS SUBJECT TO RECALL AND REVISIONS WITHOUT NOTICE. JACKSON PRODUCTS CO. IS NOT RESPONSIBLE FOR RECALLS OR REVISIONS OF THIS KIT. JACKSON PRODUCTS CO. IS NOT RESPONSIBLE FOR RECALLS OR REVISIONS OF THIS KIT.

P/N 7000111 KIT
P/N 0212989 Spring Only



REV	REVISION	DATE
1		

THIS KIT IS THE PROPERTY OF JACKSON PRODUCTS CO. AND IS SUBJECT TO RECALL AND REVISIONS WITHOUT NOTICE. JACKSON PRODUCTS CO. IS NOT RESPONSIBLE FOR RECALLS OR REVISIONS OF THIS KIT. JACKSON PRODUCTS CO. IS NOT RESPONSIBLE FOR RECALLS OR REVISIONS OF THIS KIT.

Jackson Products Company
An Alco-Standard Company
Tampa, Florida

SCALE NONE
DRAWN BY: JST/ROLD
DATE: 1/22/68
NO. 27/N 329

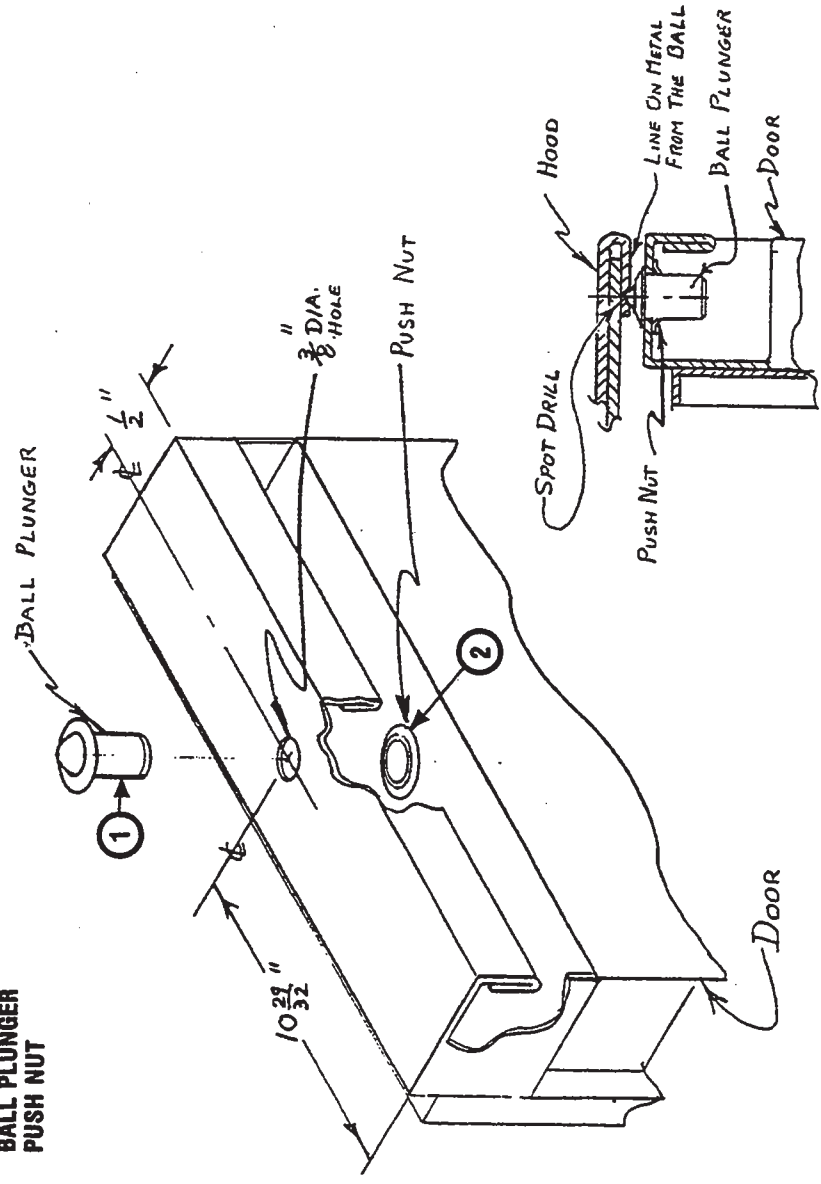
DOOR SPRING ASS'Y
2417

BALL PLUNGER ASSEMBLY

PROCEDURE:

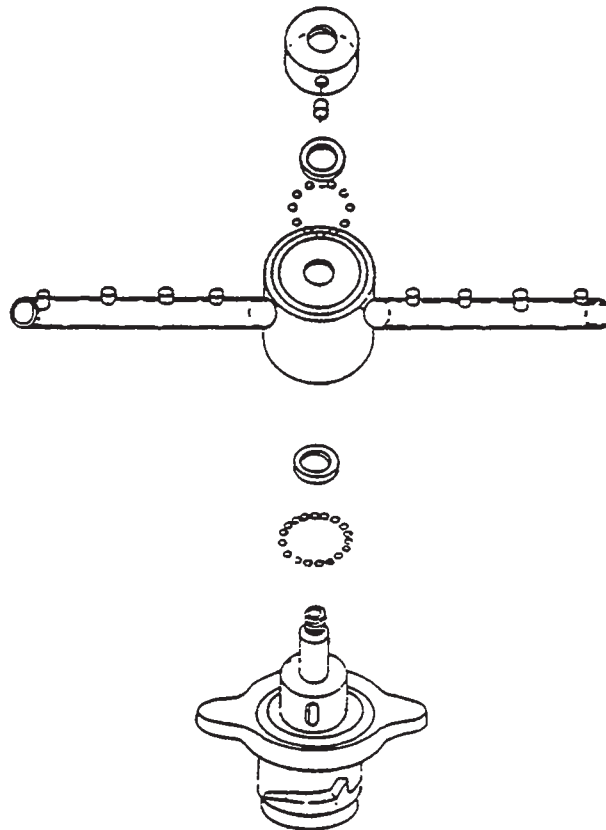
- * Drill a 3/8" Dia. hole in top of door at the proper location as shown on drawing.
- * Insert Ball Plunger thru this hole.
- * With your fingers, place the Push Nut on the ball plunger with the taper down. You should be able to engage the nut with your thumb and fingers.
- * Hold the Ball Plunger with your fingers and use a screw driver to push the nut to a tight position. Note: Rotate Ball Plunger as the nut is being pushed on.
- * Close the door. A line on the underside of hood is clearly marked when the door is open. Center punch at the inside end of the line. Use a center drill to assure a definite drilling point. Now take a 3/8" Dia. Drill and spot drill to 1/32"-1/16" Deep.
- * The door plunger ball will locate in the drilled indent to hold the door closed.

ITEM	P/N	DESCRIPTION
1.	0113406	BALL PLUNGER
2.	1113270	PUSH NUT



" COMPLETE ASSEMBLY "

FIGURE 4



SPRAY ARM ASSEMBLY

I L L U S T R A T E D P A R T S L I S T

The Illustrated Parts List Section will contain exploded assembly drawings illustrating a complete replacement parts list for the Model 24 LT.

When ordering a Replacement Part:

PLEASE PROVIDE THE FOLLOWING INFORMATION:

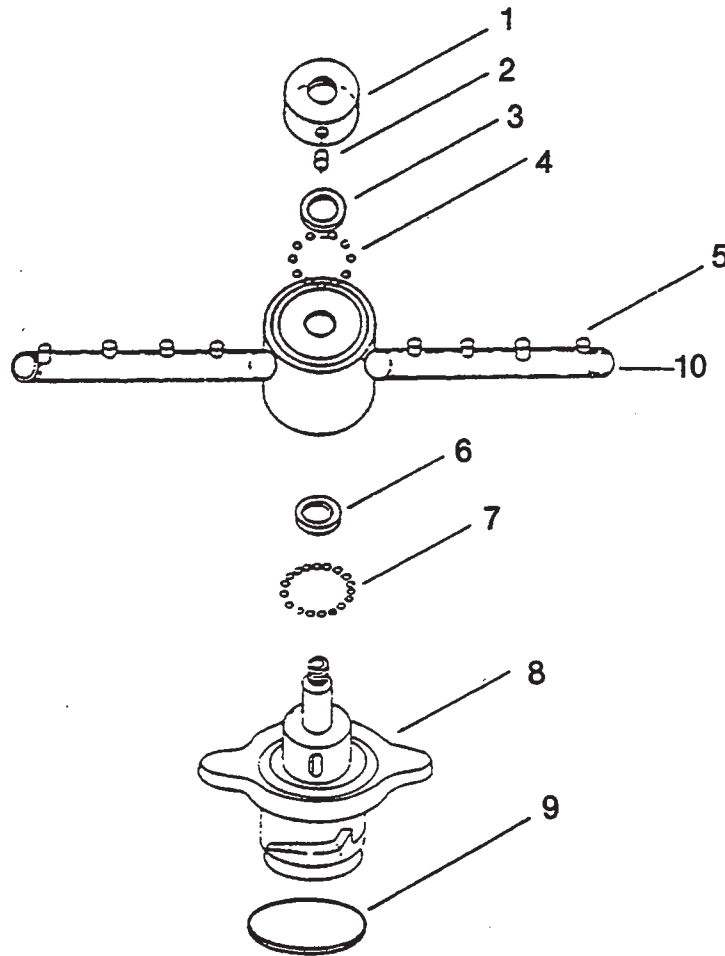
MODEL NUMBER

SERIAL NUMBER

REPLACEMENT PART NUMBER(S)

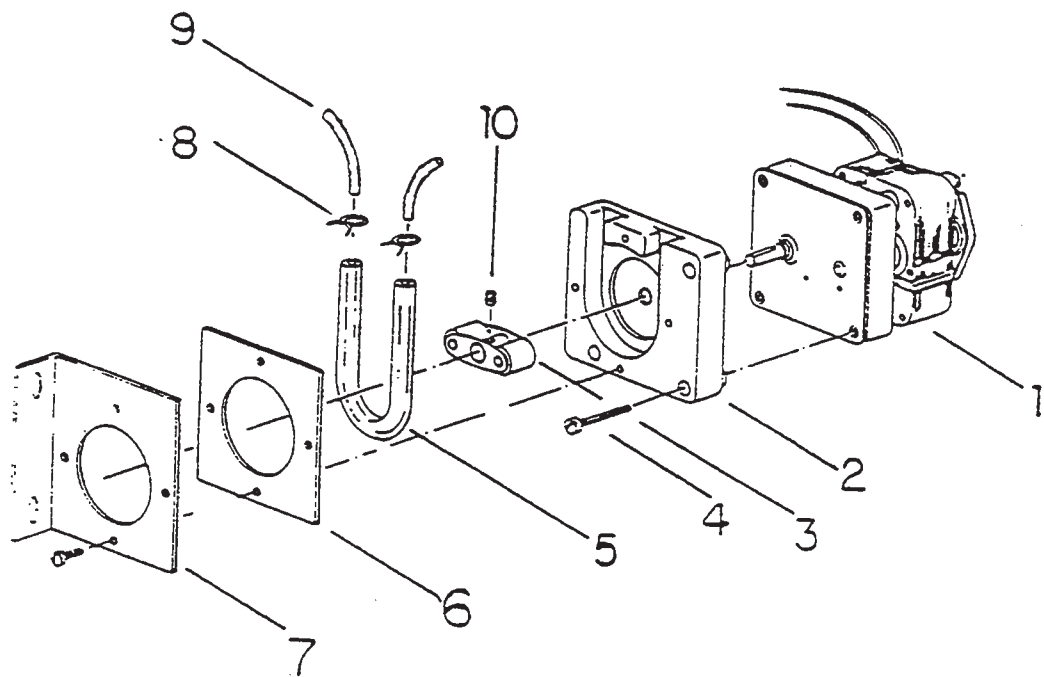
CAUTION: Never substitute a replacement part with an unauthorized part.

ILLUSTRATED PARTS LIST



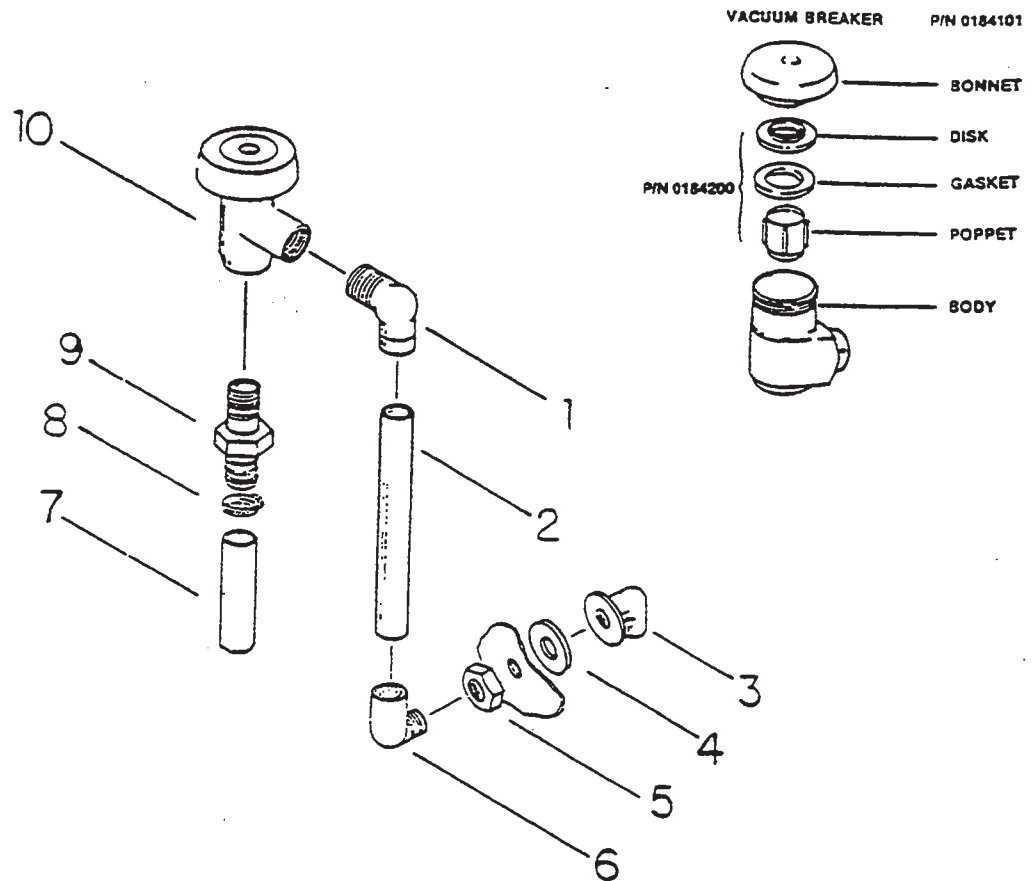
ITEM NO.	PART NUMBER	DESCRIPTION OF PART
All	0199700	WASH/RINSE SPRAY ARM ASSEMBLY
1	0199705	WASH/RINSE SPRAY ARM RACE W/SET SCREW
2	0187000	WASH/RINSE SPRAY ARM RACE SET SCREW
3	0199702	WASHER, UPPER SPRAY ARM
4	0194004	BALL BEARING, SET OF 29 PER SPRAY ARM
5	0199704	SPRAY ARM
6	0199702	WASHER, LOWER SPRAY ARM
7	0194004	BALL BEARINGS (18 IN BOTTOM - 11 IN TOP)
8	0199701	SPRAY ARM SPINDLE
9	0199707	SPRAY ARM SPINDLE SEAL
10	0199501	END PLUG S/S

ILLUSTRATED PARTS LIST



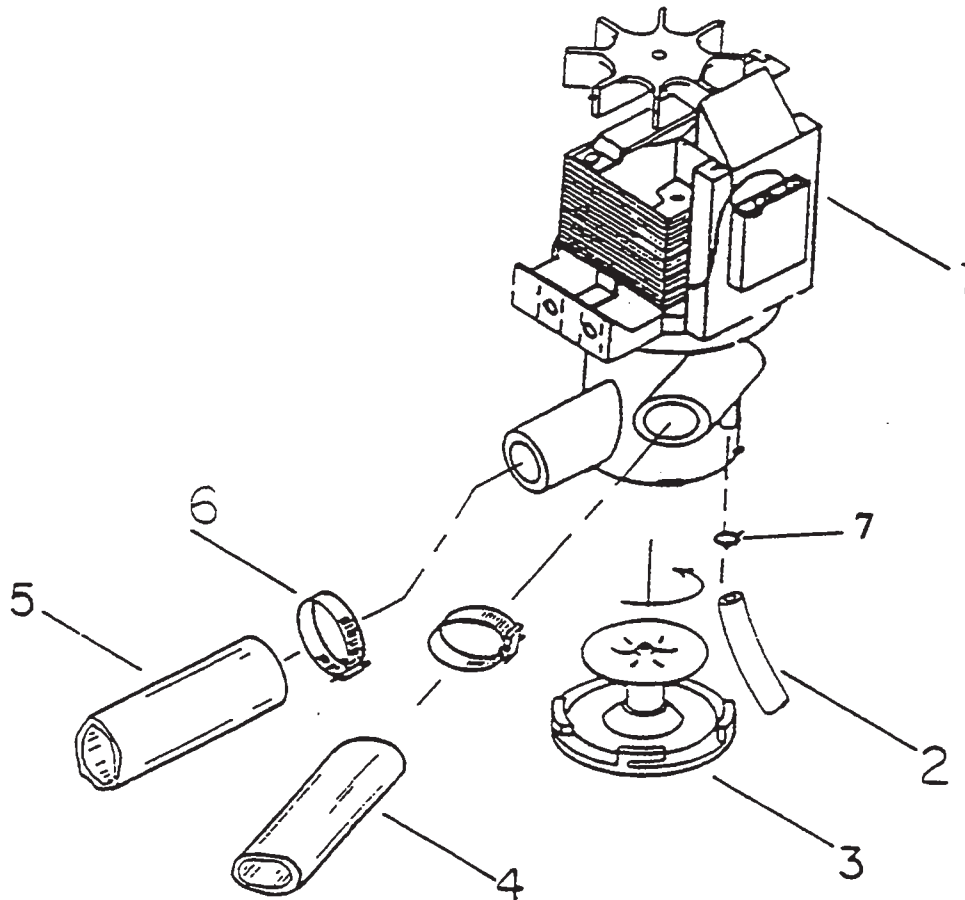
ITEM NO.	PART NUMBER	DESCRIPTION OF PART
1	0046501	DISPENSER, PUMP MOTOR ONLY
	0046500	DISPENSER, COMPLETE
2	0046502	DISPENSER, PUMP HOUSING
3	0046504	DISPENSER, CAM ROLLER
4	0046509	DISPENSER, FACE PLATE SCREWS
5	0046506	DISPENSER, PUMP HOSE
6	0046508	DISPENSER, FACE PLATE
7		DISPENSER MOUNTING BRACKET
8	0052114	HOSE CLAMPS
9	0046510	DISPENSER HOSE
10	0046505	SET SCREW

ILLUSTRATED PARTS LIST



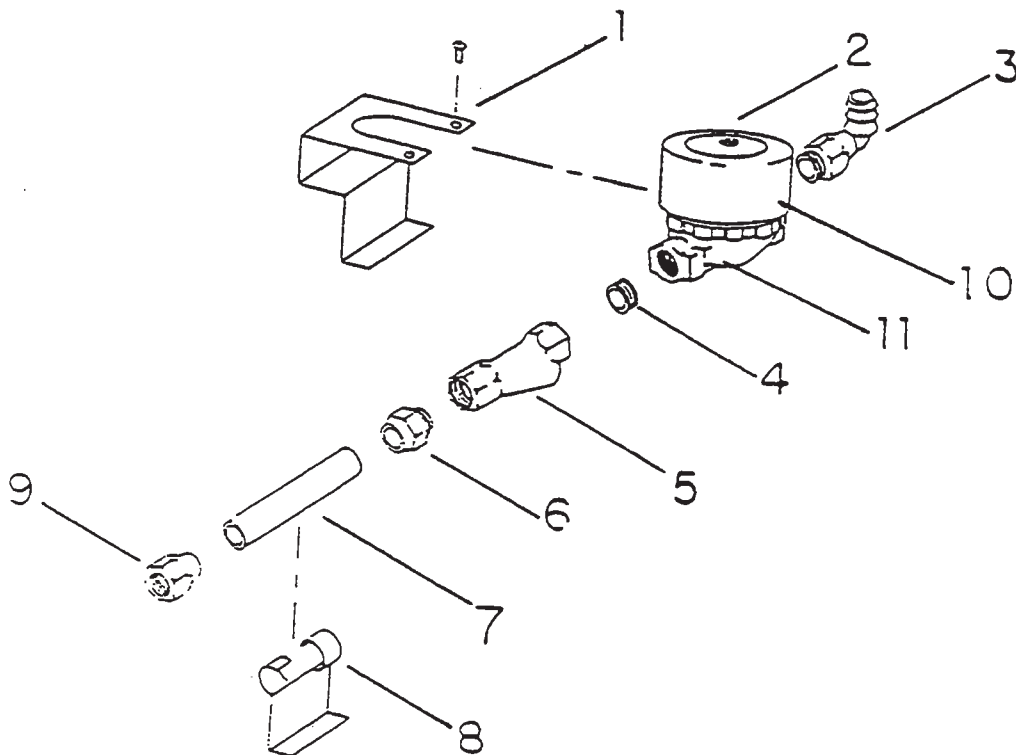
ITEM NO.	PART NUMBER	DESCRIPTION OF PART
1		FILL PLUMBING ELBOW 1/2"
2		COPPER PIPE 1/2"
3		FILL PLUMBING NOZZLE
4		FILL PLUMBING NOZZLE WASHER
5		FILL PLUMBING NUT
6		FILL PLUMBING ELBOW 1/2"
7		FILL PLUMBING HOSE 1/2"
8		HOSE CLAMP
9		FILL PLUMBING HOSE BARB 1/2"
10	0184101	VACUUM BREAKER 1/2"
	0184200	VACUUM BREAKER REPAIR KIT 1/2"

ILLUSTRATED PARTS LIST



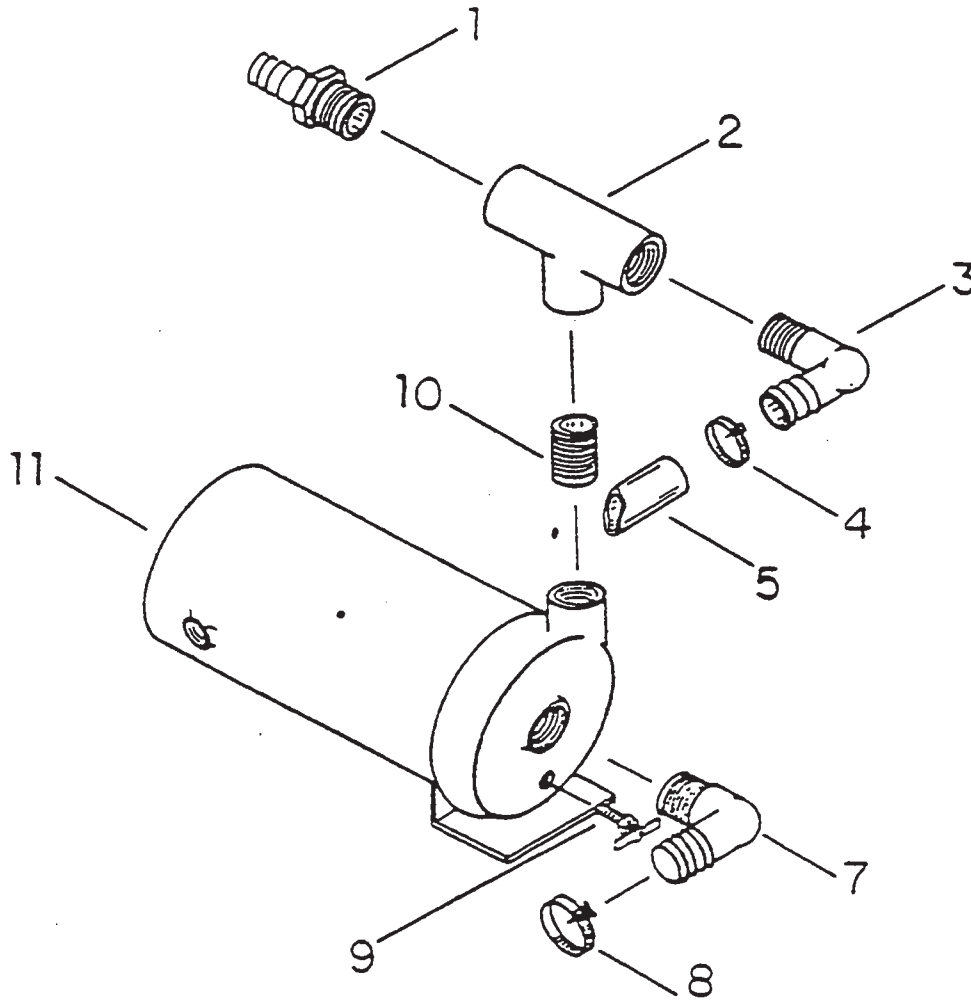
ITEM NO.	PART NUMBER	DESCRIPTION OF PART
1	0052118	PUMP, DRAIN 115V
2	0052115	PUMP, DRAIN BLEEDER HOSE
3	0052119	PUMP, DRAIN CAP
4	0052116	PUMP, DRAIN HOSE TO SOLENOID
5	0052117	PUMP, DRAIN HOSE TO DRAIN BARB
6	0052123	HOSE CLAMP
7	0052124	HOSE CLAMP

ILLUSTRATED PARTS LIST



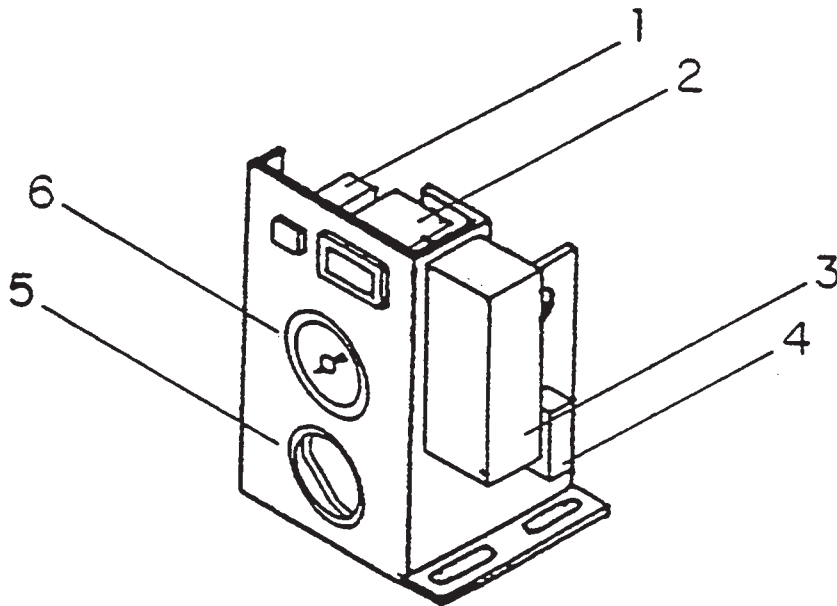
ITEM NO.	PART NUMBER	DESCRIPTION OF PART
1		BRACKET, SOLENOID
2	0142100	SOLENOID VALVE COMPLETE
3	6063500	SOLENOID HOSE BARB ELBOW
4		SOLENOID CLOSE NIPPLE 1/2"
5	0153600	STRAINER "Y" INCOMING HOT WATER
6		FITTING 1/2"
7		COPPER PIPE 1/2"
8		BRACKET, PIPE SUPPORT
9		FITTING, PIPE 1/2" NPT
10	0143600	SOLENOID COIL(110V)
11	0145100	SOLENOID VALVE DIAPHRAM

ILLUSTRATED PARTS LIST



ITEM NO.	PART NUMBER	DESCRIPTION OF PART
1	0087912	PUMP HOSE BARB
2	0087914	PUMP HOSE THREADED TEE 1" NPT
3	0087911	PUMP HOSE ELBOW 1"
4		HOSE CLAMP
5	0087908	PUMP HOSE 3/4" LOWER SPRAY ARM
7	0087910	PUMP SUCTION HOSE ELBOW 1 1/4"
8	0052123	HOSE CLAMP
9	2001700	PUMP HOUSING PETCOCK
10	0087913	PUMP HOUSING CLOSE NIPPLE
11		PUMP MOTOR ONLY 115V (NOT AVAILABLE)
	0087900	PUMP AND MOTOR COMPLETE
	0087006	PUMP SEAL/GASKET—P/N 0087915

ILLUSTRATED PARTS LIST



ITEM NO.	PART NUMBER	DESCRIPTION OF PART
2	0034200	COUNTER, CYCLE
1	0012600	CIRCUIT BREAKER, 5AMP
3	0172800	TIMER ASSEMBLY COMPLETE
	0172801	TIMER MOTOR 115V
	0172802	TIMER MICROSWITCH
4	0122701	RELAY, MOTOR CONTACTOR
5	0052118	PUMP, DRAIN 115V
	0052111	PUMP, DRAIN VENT CAP
	0052115	PUMP, DRAIN BLEEDER HOSE
	0052116	PUMP, DRAIN, HOSE TO SOL. 10 FT X 5/8 ID
	0052117	PUMP, DRAIN, HOSE TO DRAIN BARB FITTING
6	0166602	THERMOMETER, WASH

SERVICE INSTRUCTIONS

(INCOMING WATER SOLENOID VALVE)

SOLENOID VALVE

P/N 0142100

(110V, used on 60 cycle machine)

To take the valve apart:

Disassembly — These valves may be taken apart by unscrewing the bonnet and the enclosing tube assembly from the valve body assembly. See Fig. 3. After unscrewing, carefully lift off the bonnet and enclosing tube assembly. Don't drop the plunger. The "O" ring seal and diaphragm cartridge can now be lifted out.

Be careful not to damage the machined faces while the valve is apart.

To Reassemble — Place the diaphragm cartridge in the body with the pilot port extension UP. Hold the plunger with the synthetic seat against the pilot port. Make sure the "O" ring is in place, then lower the bonnet and enclosing tube assembly over the plunger. Screw bonnet assembly snugly down on the body assembly.

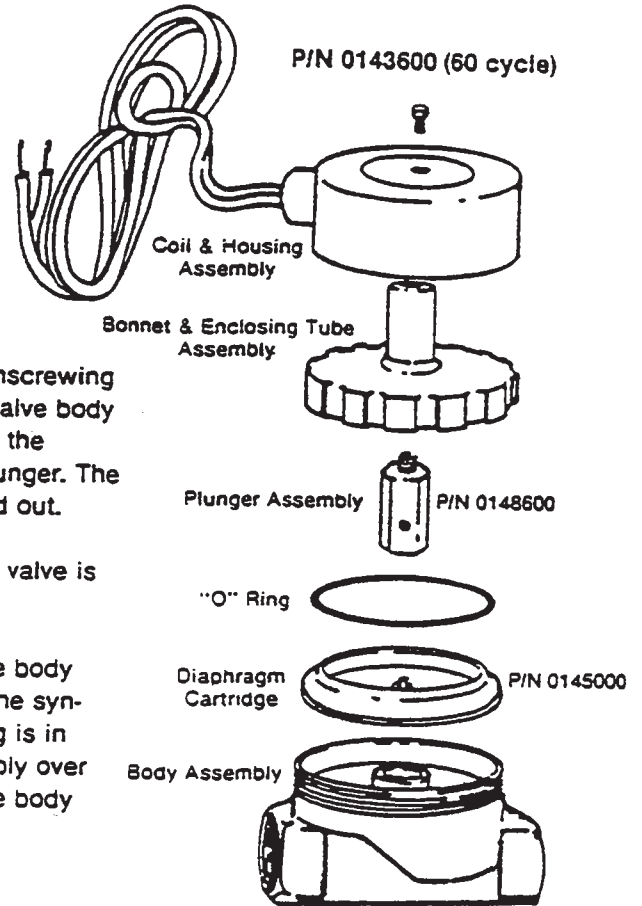
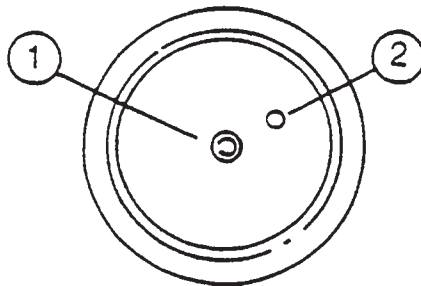


FIG.3

DIAPHRAGM CARTRIDGE



Possible Problems

Pilot Port extension #1 clogged
Hole #2 clogged

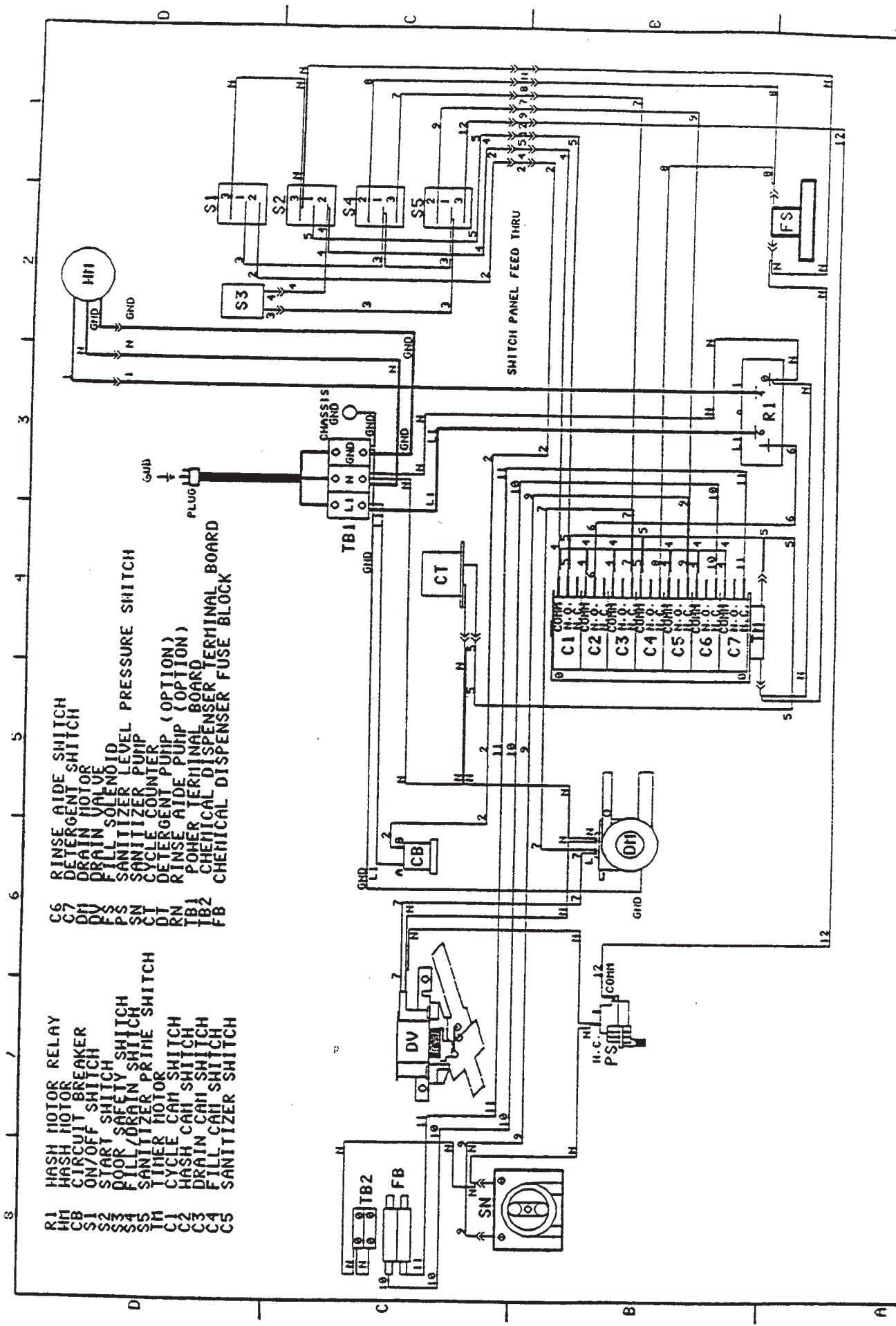
Remedy

Pass heated straight pin through hole #2
or clean hole #1

**REPLACEMENT PARTS LIST
FOR
MODEL—24LT**

PART NUMBER	DESCRIPTION
0034200	COUNTER, CYCLE
0012600	CIRCUIT BREAKER, 5 AMP
0046500	DISPENSER, COMPLETE "SANITIZER"
0046501	DISPENSER, PUMP MOTOR ONLY
0046502	DISPENSER, PUMP HOUSING ONLY
0046504	DISPENSER, PUMP CAM ROLLER ASSEMBLY
0046505	DISPENSER, PUMP CAM ROLLER SET SCREW
0046506	DISPENSER, PUMP HOSE
0046507	DISPENSER, PUMP HOSE CLAMP
0046508	DISPENSER, PUMP FACE PLATE
0046509	DISPENSER, PUMP FACE PLATE SCREWS, 8/32
0046510	DISPENSER, PUMP TUBING INLET/OUTLET, 10 FT.
0046512	DISPENSER, PUMP TUBING STIFFENERS, INTAKE
0048100	DOOR, COMPLETE ASSEMBLY
0048104	DOOR, OUTER PANEL
0048105	DOOR, INNER PANEL W/RACK SLIDES
7000111	DOOR, HINGE SPRING COMPLETE ASSEMBLY
	DOOR, HINGE, RIGHT SIDE
	DOOR, HINGE, AXLE
	DOOR, HINGE, AXLE BUSHING
	DOOR, HINGE, AXLE SPRING
0048111	DOOR, HINGE, AXLE SPRING WASHER, S/S 1/4"
0048112	DOOR, HINGE, AXLE SPRING LOCKNUT S/S 1/4"
0048113	DOOR, HINGE, AXLE SPRING NYLON SPACER
0048114	DOOR, HINGE, AXLE SPRING BOLT, S/S 1/4-20
0054212	DRAIN, SOLENOID 90° ANGLE
0087900	PUMP AND MOTOR, WASH/RINSE, COMPLETE
0087900	PUMP, MOTOR ONLY, 115V, 3/4 HP, 3450 RPM
0087902	PUMP, HOUSING ONLY
0087006	PUMP, SEAL
0087904	PUMP, IMPELLER
0087905	PUMP, IMPELLER NUT
0087906	PUMP, HOUSING PETCOCK
0087907	PUMP, HOSE, SUCTION, 1 1/4" x 5 1/2"
0087908	PUMP, HOSE, SPRAY ARM LOWER 3/4"
0087909	PUMP, HOSE, SPRAY ARM UPPER 3/4"
0087910	PUMP, HOSE, SUCTION, ELBOW BARB, 1 1/4"
0087911	PUMP, HOSE, SPRAY ARM LOWER ELBOW 1"
0087912	PUMP, HOSE, SPRAY ARM UPPER BARB 1"
0087913	PUMP, HOUSING, CLOSE NIPPLE 1" NPT
0087914	PUMP, HOUSING, THREADED TEE, 1" NPT
0122701	RELAY, MOTOR CONTACTOR
0142000	SOLENOID VALVE, COMPLETE 110V
0143600	SOLENOID VALVE, COIL 110V
0145100	SOLENOID VALVE, DIAPHRAGM CARTRIDGE 1/2"
0087915	GASKET PUMP

PART NUMBER	DESCRIPTION
0142803	SOLENOID, VALVE, PLUNGER ASSEMBLY 1/2"
0151700	STRAINER, PAN, WASH TANK
0153600	STRAINER, "Y", INCOMING HOT WATER 1/2"
0160100	SWITCH, POWER, ON/OFF
0160200	SWITCH, START AND PRIME, W/LAMP
0160300	SWITCH, FILL/DRAIN
0160400	SWITCH, DOOR CONTACT
0160500	SWITCH, DOOR CONTACT MAGNET
0166602	GAUGE, THERMOMETER, WASH/RINSE TANK
0166100	TERMINAL BOARD, 3-WAY
0172800	TIMER, CYCLE, 7-CAMS 115V
0172801	TIMER, CYCLE, MOTOR 115V
0172802	TIMER, CYCLE, MICRO-SWITCH
0184101	VACUUM BREAKER, 1/2" CONBRACO
0184200	VACUUM BREAKER, 1/2" CONBRACO REPAIR KIT
0199700	SPRAY ARM ASSEMBLY COMPLETE W/SPINDLE
0199701	SPRAY ARM, SPINDLE
0194000	SPRAY ARM, BALL BEARINGS "SET OF 29"
0199702	SPRAY ARM, SPINDLE BOTTOM WASHER
0199702	SPRAY ARM, SPINDLE UPPER WASHER
0199704	SPRAY ARM ONLY
0199705	SPRAY ARM, SPINDLE CAP W/SET SCREW
0187000	SPRAY ARM, SPINDLE CAP SET SCREW
0052118	PUMP, DRAIN, 115V
0052119	PUMP, DRAIN, CAP
0052115	PUMP, DRAIN, BLEEDER HOSE
0052116	PUMP, DRAIN, HOSE TO SOLENOID
0052117	PUMP, DRAIN, HOSE TO DRAIN BARB/FITTING
0141300	BRACKET, SANITIZER DRIP CUP
0160600	SANITIZER PRESSURE SWITCH
7000111	DOOR SPRING HINGE KIT
0212989	DOOR HINGE SPRING ONLY
7000104	START SWITCH CONV. KIT
7000102	SWITCH BOOT RUBBER



- R1 WASH MOTOR RELAY
- R2 DETERGENT MOTOR
- R3 DRAIN MOTOR
- R4 ON/OFF SWITCH
- R5 START SAFETY SWITCH
- R6 FILL/DRAIN PRIME SWITCH
- R7 TIMER MOTOR
- C1 CYCLE CAM SWITCH
- C2 WASH CAM SWITCH
- C3 DRAIN CAM SWITCH
- C4 FILL CAM SWITCH
- C5 SANITIZER SWITCH

- C6 RINSE AIDE SWITCH
- C7 DETERGENT SWITCH
- DM1 DRAIN MOTOR
- DM2 DRAIN MOTOR
- DM3 DRAIN MOTOR
- DM4 DRAIN MOTOR
- DM5 DRAIN MOTOR
- DM6 DRAIN MOTOR
- DM7 DRAIN MOTOR
- DM8 DRAIN MOTOR
- DM9 DRAIN MOTOR
- DM10 DRAIN MOTOR
- DM11 DRAIN MOTOR
- DM12 DRAIN MOTOR
- DM13 DRAIN MOTOR
- DM14 DRAIN MOTOR
- DM15 DRAIN MOTOR
- DM16 DRAIN MOTOR
- DM17 DRAIN MOTOR
- DM18 DRAIN MOTOR
- DM19 DRAIN MOTOR
- DM20 DRAIN MOTOR
- DM21 DRAIN MOTOR
- DM22 DRAIN MOTOR
- DM23 DRAIN MOTOR
- DM24 DRAIN MOTOR
- DM25 DRAIN MOTOR
- DM26 DRAIN MOTOR
- DM27 DRAIN MOTOR
- DM28 DRAIN MOTOR
- DM29 DRAIN MOTOR
- DM30 DRAIN MOTOR
- DM31 DRAIN MOTOR
- DM32 DRAIN MOTOR
- DM33 DRAIN MOTOR
- DM34 DRAIN MOTOR
- DM35 DRAIN MOTOR
- DM36 DRAIN MOTOR
- DM37 DRAIN MOTOR
- DM38 DRAIN MOTOR
- DM39 DRAIN MOTOR
- DM40 DRAIN MOTOR
- DM41 DRAIN MOTOR
- DM42 DRAIN MOTOR
- DM43 DRAIN MOTOR
- DM44 DRAIN MOTOR
- DM45 DRAIN MOTOR
- DM46 DRAIN MOTOR
- DM47 DRAIN MOTOR
- DM48 DRAIN MOTOR
- DM49 DRAIN MOTOR
- DM50 DRAIN MOTOR
- DM51 DRAIN MOTOR
- DM52 DRAIN MOTOR
- DM53 DRAIN MOTOR
- DM54 DRAIN MOTOR
- DM55 DRAIN MOTOR
- DM56 DRAIN MOTOR
- DM57 DRAIN MOTOR
- DM58 DRAIN MOTOR
- DM59 DRAIN MOTOR
- DM60 DRAIN MOTOR
- DM61 DRAIN MOTOR
- DM62 DRAIN MOTOR
- DM63 DRAIN MOTOR
- DM64 DRAIN MOTOR
- DM65 DRAIN MOTOR
- DM66 DRAIN MOTOR
- DM67 DRAIN MOTOR
- DM68 DRAIN MOTOR
- DM69 DRAIN MOTOR
- DM70 DRAIN MOTOR
- DM71 DRAIN MOTOR
- DM72 DRAIN MOTOR
- DM73 DRAIN MOTOR
- DM74 DRAIN MOTOR
- DM75 DRAIN MOTOR
- DM76 DRAIN MOTOR
- DM77 DRAIN MOTOR
- DM78 DRAIN MOTOR
- DM79 DRAIN MOTOR
- DM80 DRAIN MOTOR
- DM81 DRAIN MOTOR
- DM82 DRAIN MOTOR
- DM83 DRAIN MOTOR
- DM84 DRAIN MOTOR
- DM85 DRAIN MOTOR
- DM86 DRAIN MOTOR
- DM87 DRAIN MOTOR
- DM88 DRAIN MOTOR
- DM89 DRAIN MOTOR
- DM90 DRAIN MOTOR
- DM91 DRAIN MOTOR
- DM92 DRAIN MOTOR
- DM93 DRAIN MOTOR
- DM94 DRAIN MOTOR
- DM95 DRAIN MOTOR
- DM96 DRAIN MOTOR
- DM97 DRAIN MOTOR
- DM98 DRAIN MOTOR
- DM99 DRAIN MOTOR
- DM100 DRAIN MOTOR

- TM TIMER MOTOR
- WM WASH MOTOR
- DM DRAIN MOTOR
- DM1 DRAIN MOTOR
- DM2 DRAIN MOTOR
- DM3 DRAIN MOTOR
- DM4 DRAIN MOTOR
- DM5 DRAIN MOTOR
- DM6 DRAIN MOTOR
- DM7 DRAIN MOTOR
- DM8 DRAIN MOTOR
- DM9 DRAIN MOTOR
- DM10 DRAIN MOTOR
- DM11 DRAIN MOTOR
- DM12 DRAIN MOTOR
- DM13 DRAIN MOTOR
- DM14 DRAIN MOTOR
- DM15 DRAIN MOTOR
- DM16 DRAIN MOTOR
- DM17 DRAIN MOTOR
- DM18 DRAIN MOTOR
- DM19 DRAIN MOTOR
- DM20 DRAIN MOTOR
- DM21 DRAIN MOTOR
- DM22 DRAIN MOTOR
- DM23 DRAIN MOTOR
- DM24 DRAIN MOTOR
- DM25 DRAIN MOTOR
- DM26 DRAIN MOTOR
- DM27 DRAIN MOTOR
- DM28 DRAIN MOTOR
- DM29 DRAIN MOTOR
- DM30 DRAIN MOTOR
- DM31 DRAIN MOTOR
- DM32 DRAIN MOTOR
- DM33 DRAIN MOTOR
- DM34 DRAIN MOTOR
- DM35 DRAIN MOTOR
- DM36 DRAIN MOTOR
- DM37 DRAIN MOTOR
- DM38 DRAIN MOTOR
- DM39 DRAIN MOTOR
- DM40 DRAIN MOTOR
- DM41 DRAIN MOTOR
- DM42 DRAIN MOTOR
- DM43 DRAIN MOTOR
- DM44 DRAIN MOTOR
- DM45 DRAIN MOTOR
- DM46 DRAIN MOTOR
- DM47 DRAIN MOTOR
- DM48 DRAIN MOTOR
- DM49 DRAIN MOTOR
- DM50 DRAIN MOTOR
- DM51 DRAIN MOTOR
- DM52 DRAIN MOTOR
- DM53 DRAIN MOTOR
- DM54 DRAIN MOTOR
- DM55 DRAIN MOTOR
- DM56 DRAIN MOTOR
- DM57 DRAIN MOTOR
- DM58 DRAIN MOTOR
- DM59 DRAIN MOTOR
- DM60 DRAIN MOTOR
- DM61 DRAIN MOTOR
- DM62 DRAIN MOTOR
- DM63 DRAIN MOTOR
- DM64 DRAIN MOTOR
- DM65 DRAIN MOTOR
- DM66 DRAIN MOTOR
- DM67 DRAIN MOTOR
- DM68 DRAIN MOTOR
- DM69 DRAIN MOTOR
- DM70 DRAIN MOTOR
- DM71 DRAIN MOTOR
- DM72 DRAIN MOTOR
- DM73 DRAIN MOTOR
- DM74 DRAIN MOTOR
- DM75 DRAIN MOTOR
- DM76 DRAIN MOTOR
- DM77 DRAIN MOTOR
- DM78 DRAIN MOTOR
- DM79 DRAIN MOTOR
- DM80 DRAIN MOTOR
- DM81 DRAIN MOTOR
- DM82 DRAIN MOTOR
- DM83 DRAIN MOTOR
- DM84 DRAIN MOTOR
- DM85 DRAIN MOTOR
- DM86 DRAIN MOTOR
- DM87 DRAIN MOTOR
- DM88 DRAIN MOTOR
- DM89 DRAIN MOTOR
- DM90 DRAIN MOTOR
- DM91 DRAIN MOTOR
- DM92 DRAIN MOTOR
- DM93 DRAIN MOTOR
- DM94 DRAIN MOTOR
- DM95 DRAIN MOTOR
- DM96 DRAIN MOTOR
- DM97 DRAIN MOTOR
- DM98 DRAIN MOTOR
- DM99 DRAIN MOTOR
- DM100 DRAIN MOTOR

- DB1 DISPENSER BOARD
- DB2 DISPENSER BOARD
- FB FUSE BOARD
- CT CONTROL TRANSFORMER
- LI LINE INDUCTOR
- LI1 LINE INDUCTOR
- LI2 LINE INDUCTOR
- LI3 LINE INDUCTOR
- LI4 LINE INDUCTOR
- LI5 LINE INDUCTOR
- LI6 LINE INDUCTOR
- LI7 LINE INDUCTOR
- LI8 LINE INDUCTOR
- LI9 LINE INDUCTOR
- LI10 LINE INDUCTOR
- LI11 LINE INDUCTOR
- LI12 LINE INDUCTOR
- LI13 LINE INDUCTOR
- LI14 LINE INDUCTOR
- LI15 LINE INDUCTOR
- LI16 LINE INDUCTOR
- LI17 LINE INDUCTOR
- LI18 LINE INDUCTOR
- LI19 LINE INDUCTOR
- LI20 LINE INDUCTOR
- LI21 LINE INDUCTOR
- LI22 LINE INDUCTOR
- LI23 LINE INDUCTOR
- LI24 LINE INDUCTOR
- LI25 LINE INDUCTOR
- LI26 LINE INDUCTOR
- LI27 LINE INDUCTOR
- LI28 LINE INDUCTOR
- LI29 LINE INDUCTOR
- LI30 LINE INDUCTOR
- LI31 LINE INDUCTOR
- LI32 LINE INDUCTOR
- LI33 LINE INDUCTOR
- LI34 LINE INDUCTOR
- LI35 LINE INDUCTOR
- LI36 LINE INDUCTOR
- LI37 LINE INDUCTOR
- LI38 LINE INDUCTOR
- LI39 LINE INDUCTOR
- LI40 LINE INDUCTOR
- LI41 LINE INDUCTOR
- LI42 LINE INDUCTOR
- LI43 LINE INDUCTOR
- LI44 LINE INDUCTOR
- LI45 LINE INDUCTOR
- LI46 LINE INDUCTOR
- LI47 LINE INDUCTOR
- LI48 LINE INDUCTOR
- LI49 LINE INDUCTOR
- LI50 LINE INDUCTOR
- LI51 LINE INDUCTOR
- LI52 LINE INDUCTOR
- LI53 LINE INDUCTOR
- LI54 LINE INDUCTOR
- LI55 LINE INDUCTOR
- LI56 LINE INDUCTOR
- LI57 LINE INDUCTOR
- LI58 LINE INDUCTOR
- LI59 LINE INDUCTOR
- LI60 LINE INDUCTOR
- LI61 LINE INDUCTOR
- LI62 LINE INDUCTOR
- LI63 LINE INDUCTOR
- LI64 LINE INDUCTOR
- LI65 LINE INDUCTOR
- LI66 LINE INDUCTOR
- LI67 LINE INDUCTOR
- LI68 LINE INDUCTOR
- LI69 LINE INDUCTOR
- LI70 LINE INDUCTOR
- LI71 LINE INDUCTOR
- LI72 LINE INDUCTOR
- LI73 LINE INDUCTOR
- LI74 LINE INDUCTOR
- LI75 LINE INDUCTOR
- LI76 LINE INDUCTOR
- LI77 LINE INDUCTOR
- LI78 LINE INDUCTOR
- LI79 LINE INDUCTOR
- LI80 LINE INDUCTOR
- LI81 LINE INDUCTOR
- LI82 LINE INDUCTOR
- LI83 LINE INDUCTOR
- LI84 LINE INDUCTOR
- LI85 LINE INDUCTOR
- LI86 LINE INDUCTOR
- LI87 LINE INDUCTOR
- LI88 LINE INDUCTOR
- LI89 LINE INDUCTOR
- LI90 LINE INDUCTOR
- LI91 LINE INDUCTOR
- LI92 LINE INDUCTOR
- LI93 LINE INDUCTOR
- LI94 LINE INDUCTOR
- LI95 LINE INDUCTOR
- LI96 LINE INDUCTOR
- LI97 LINE INDUCTOR
- LI98 LINE INDUCTOR
- LI99 LINE INDUCTOR
- LI100 LINE INDUCTOR

NOTE: Ⓢ DENOTES OPTIONAL EQUIPMENT

TAMPA, FLORIDA
 DRH...D.A.B. DATE 12-1-87 AP...
 CK... DATE... AP...
 TITLE 2-RLY INTERCONNECTION
 WIRING DIAGRAM

JACKSON SALES REPRESENTATIVES' TERRITORIES

JACKSON MSC, INC

World Headquarters & Manufacturing Operations
Highway 25E, P.O. Box 1060
Barbourville, KY 40906
888/800-JMSC
Fax: 606/523-9196

Nashville Office
801 Airpark Center Drive
Nashville, TN 37127
615/399-3944
Fax: 615/399-0687

ALABAMA:

Northern:

Master Marketing South
146 Corporate Way
Pelham, AL 35124
205/620-9180
Fax: 205/620-9497
Rick Hennebaul, Tyler Proud

Southern:

Master Marketing South
5 Old West Point Road
Salem, AL 36874
800/309-7893
Fax: 334/704-0056
Stephanie Wall

ALASKA:

Performance Reps, N.W.
9923 S.W. 178th Street
P.O. Box 971
Vashon, WA 98070
206/463-6565
Fax: 206/463-3455
Don Cunningham, Mike
Cunningham Greg Stoffer,
Joyce Smith, Jeff Cunningham,
Gert Cunningham

ARKANSAS:

WTD Associates
325 N. 18th Avenue
Laurel, MS 39440
800/821-2597
Fax: 601/649-4406
Wally Damlouji,
Shirley Simpson, Paul Damlouji

ARIZONA:

Tom Redditt Sales Agency
4215 North 16th Street, #5
Phoenix, AZ 85016
602/277-0805
Fax: 602/277-4763
Bob Tully, Teresa Piotrowicz

CALIFORNIA:

Northern:
Counties north of and including
Monterey, Kings, Tulane and Inyo
Golden Gate Marketing
27 Pamaron Way, Suite L
Novato, CA 94949
415/382-8700
Fax: 415/382-8707
Lewis Levitan, Todd Nelson,
Lara Nelson

Southern

Counties south of and including
San Luis Obispo, Kern and San
Bernadino
Preferred Marketing Group
7026 Sophia Avenue
Van Nuys, CA 91406
818/994-9292
Fax: 818/994-9399
Bill Fero, Mike von Radesky,
Lisa McKee, Sorin Muresan,
Tony Valvo, Chris Mazzilli,
Bruce Baker, Steve Matheson

1 San Vincente
Rancho Santa Margarita,
CA 92688
714/589-1165
Fax: 714/589-3558
Mario O'Brien

4917 E. Broadway
Long Beach, CA 90803
562/434-5880
Fax: 562/434-2261
Bruce Baker

COLORADO:

Tom Redditt Sales Agency
1445 Grove Street
Denver, CO 80204-0157
303/571-5100
Fax: 303/623-0618
Patrick Maher, Lance Redditt,
Tom Redditt Jr., Darcy
Kerstiens, BruceMcAdow

CONNECTICUT:

D.M.M. Enterprises, Inc
3360 Kennedy Blouvedard
Jersey City, NJ 07307
201/798-6015
Fax: 201/798-1039
Ro Doyle, Tony Mahoney, Brian
Mahoney

DELAWARE:

Starliper & Associates
326 Gordon Drive
Lionville, PA 19353
610/363-5688
Fax: 610/363-6746
Eric Starliper, Chuck Starliper,
Debbie McCormack, David
Basch

DISTRICT of COLUMBIA

High, Sabatino & Huber
10545 Guilford Road, #101
Jessup, MD 20794
301/470-7051
Fax: 301/470-2809
David High, Pat High, Stacy
Stahle, Patty King, Ken High,
Joe B. Sabatino

FLORIDA:

All Counties east of and including
Gadsden, Liberty and Franklin.
Florida Food Service

Equipment Agents

6950 Cypress Road
Suite #104
Plantation, FL 33317
954/792-9788
Fax: 954/792-9885
Ed Shaheen, Patrica Anderson,
Patricia Cantin, Ray Onori,
Jamie Visbal

1843 Cottonwood Trail
Sarasota, FL 34238
941/342-1986
Fax: 941/342-1967
John Connor III

562 Walden Court
Dunedin, FL 34698
813/736-1427
Fax: 813/736-3742
Anthony Monaco

530 S. Country Road
427 Ste. 128
Longwood, FL 32756
407/834-5872
Fax: 407/834-0977
Jerry Mayo

Panhandle

Counties west of and including
Jackson, Calhoun and Gulf.
Master Marketing South
5 Old West Point Road
Salem, AL 36874
800/309-7893
Fax: 334/704-0056
Stephanie Wall

GEORGIA:

Master Marketing South
6190 Regency Pkwy,
Suite 318
Norcross, GA 30071
770/409-1980
Fax: 770/409-1881
Bruce Marlette, Terry Tanner,
Jerry Hennebaul, Walter Rehm,
Darren Hawkins, Terri Smith

HAWAII:

Performance Reps, N.W.
9923 S.W. 178th Street
P.O. Box 971
Vashon, WA 98070
206/463-6565
Fax: 206/463-3455
Don Cunningham, Mike
Cunningham, Greg Stoffer,
Joyce Smith, Jeff Cunningham,
Gert Cunningham

IDAHO:

Performance Reps, N.W.
7945 S.W. Mohawk Drive
Tualatin, OR 97062
503/692-1552
Fax: 503/692-7955
Harrison Lee

ILLINOIS:

Northern:

Counties north of and including
Sangamon, Christian, Shelby,
Coles, Edgar; east of and
including Menard, Mason, Azwell,
Peoria, Stark, Bureau and
Whiteside.
Equipment Solutions, Inc
630 N. Washington
Suite 121
Naperville, IL 60563
630/579-1260
Fax: 630/579-1265
Tim Vesevick, Lisa Berkowitz,
Edie McGregory

Southern:

Counties south and west of
including Rock Island, Henry,
Knox, Fulton, Schuyler, Cass,
Morgan, Macoupin, Montgomery,
Fayette, Effingham, Cumberland
and Clark.

Madison Avenue Marketing
4305 Amesbury Drive
Bettendorf, IA 52722
319/359-5970
Fax: 319/359-1171
Jerry Van Daele

INDIANA:

DRC Marketing Group
5010 Porta Trail
Ft. Wayne, IN 46804
219/436-6989
Fax: 219/436-7069
Tom Mckeon

IOWA:

Madison Avenue Marketing
4305 Amesbury Drive
Bettendorf, IA 52722
319/359-5970
Fax: 319/359-1171
Jerry Van Daele

KANSAS:

Madison Avenue Marketing
10224 Caenen Lake Road
Lenexa, KS 66215
913/894-9691
Fax: 913/894-0342
Gary Kloster

KENTUCKY:

DRC Marketing Group
1743 S. High Street
Columbus, OH 43207
614/443-8020
Fax: 614/443-7650
Donald R. Cooper, Thomas
Phillips, Curtis Brooks, Mike
White

JACKSON SALES REPRESENTATIVES' TERRITORIES

LOUISIANA:

WTD Associates
1213 32nd Avenue
Gulfport, MS 39501
601/863-1038
Fax: 228/863-6191
Mark Damlouji

MAINE:

Marshall Associates, Inc
40 Beach Street
Manchester, MA 01944
978/526-4911
Fax: 978/526-1128
Gerry Dackert, CFSP;
Tom Lawler, CFSP; Kenneth
Lawler

MARYLAND:

High, Sabatino & Huber
10545 Guilford Road, #101
Jessup, MD 20794
301/470-7051
Fax: 301/470-2809

David High, Pat High, Stacy
Stahle, Patty King, Ken High,
Joe B. Sabatino

225 Lyndale Avenue
Baltimore, MD 21236
410/668-8193
Fax: 410/668-8193
Joe M. Sabatino

MASSACHUSETTS:

Marshall Associates, Inc
40 Beach Street
Manchester, MA 01944
978/526-4911
Fax: 978/526-1128
Gerry Dackert, CFSP;
Tom Lawler, CFSP; Kenneth
Lawler

MICHIGAN:

All counties except for the Upper
Peninsula

Stiefel & Associates
4625 Willoughby Road,
Suite 7
Holt, MI 48842
517/694-3828
Fax: 517/694-0942
Bill Stiefel, John Stiefel

7321 Brooklyn Avenue S.E.
Grand Rapids, MI 49508
616/698-9693
Fax: 616/554-3638
Phillip Stiefel

1500 Southlawn
Wyoming, MI 49509
616/249-9759
Fax: 616/249-9759
Bill Stiefel Jr.

Upper Peninsula

The Redco Group
11907 W. Dearborn Avenue

Wauwatosa, WI 53226
414/774-9599
Fax: 414/774-2410
Larry Popp, Russ Geiger, Sue
Lutz, Dave Hartlerode

MINNESOTA:

Hollander Company
7260 Washington Ave South
Eden Prairie, MN 55344
612/829-5500
Fax: 612/829-9664
Tim Preiner, Jerry LaMere,
Mitch Landis

MISSISSIPPI:

WTD Associates
325 N. 18th Avenue
Laurel, MS 39440
800/821-2597
Fax: 601/649-4406
Wally Damlouji, Shirley
Simpson,
Paul Damlouji

1213 32nd Avenue
Gulfport, MS 39501
601/863-1038
Fax: 228/863-6191
Mark Damlouji

MISSOURI:

Madison Avenue Marketing
68 Park Charles Boulevard
N. St. Peters, MO 63376
314/939-4842
Fax: 314/928-7299
Jim Connell, CFSP; Glenn
Kounik

MONTANA:

Performance Reps, N.W.
9923 S.W. 178th Street
P.O. Box 971
Vashon, WA 98070
206/463-6565
Fax: 206/463-3455
Don Cunningham, Mike
Cunningham, Greg Stoffer,
Joyce Smith, Jeff Cunningham,
Gert Cunningham

NEBRASKA:

Madison Avenue Marketing
9012 Timberland Drive
Omaha, NE 68152
402/572-6020
Fax: 402/572-6020
Don Birney

NEVADA:

Northern:
Counties north of and including
Douglas, Lyon, Churchill, Lander,
Eureka and White Pine.

Golden Gate Marketing
27 Pamaron Way, Suite L
Novato, CA 94949
415/382-8700
Fax: 415/382-8707

Lewis Levitan, Todd Nelson,
Lara Nelson

Southern:
Counties south of and including
Mineral, Nye and Lincoln.

Preferred Marketing Group
7026 Sophia Avenue
Van Nuys, CA 91406
818/994-9292
Fax: 818/994-9399
Bill Fero, Mike von Radesky,
Lisa McKee, Sorin Muresan,
Tony Valvo, Chris Mazzilli, Bruce
Baker, Steve Matheson

NEW HAMPSHIRE:

Marshall Associates, Inc
40 Beach Street
Manchester, MA 01944
978/526-4911
Fax: 978/526-1128
Gerry Dackert, CFSP;
Tom Lawler, CFSP; Kenneth
Lawler

NEW JERSEY:

Northern:
Counties north of and including
Huntern, Somerset, Middlesex
and Monmouth.

D.M.M. Enterprises, Inc
3360 Kennedy Blouvedard
Jersey City, NJ 07307
201/798-6015
Fax: 201/798-1039
Ro Doyle, Tony Mahoney, Brian
Mahoney

Southern:

Counties south of but excluding
Huntern, Somerset, Middlesex
and Monmouth.

Starliper & Associates
326 Gordon Drive
Lionville, PA 19353
610/363-5688
Fax: 610/363-6746
Eric Starliper, Chuck Starliper,
Debbie McCormack, David
Basch

NEW MEXICO:

Tom Redditt Sales Agency
305A Washington S.E.
Albuquerque, NM 87108
505/255-7211
Fax: 505/255-4182
Russell Shupe

NEW YORK:

Northern:
Counties north of but excluding
Sullivan, Ulster and Dutchess.
Plato, Graf & Associates, Inc
18 Meadowlark Drive
Fairport, NY 14450
716/377-1210
Fax: 716/377-6169
David Graf, David Bonfield

Southern:

Counties south of and including
Sullivan, Ulster and Dutchess.

D.M.M. Enterprises, Inc
3360 Kennedy Blouvedard
Jersey City, NJ 07307
201/798-6015
Fax: 201/798-1039

Ro Doyle, Tony Mahoney, Brian
Mahoney

NORTH CAROLINA:

Collins Associates, Inc
430 Crompton Street
Charlotte, NC 28273
704/588-8200

Fax: 704/588-8338
David Collins, Joe Benson,
Lou Bumoski, Ron Every,
Kathy Hughes

NORTH DAKOTA:

Hollander Company.
7260 Washington Ave South
Eden Prairie, MN 55344
612/829-5500
Fax: 612/829-9664
Tim Preiner, Jerry LaMere,
Mitch Landis

OHIO:

DRC Marketing Group
1743 S. High Street
Columbus, OH 43207
614/443-8020
Fax: 614/443-7650
Donald R. Cooper, Thomas
Phillips, Curtis Brooks

601A Dew Drop Circle
Forest Park, OH 45240
513-674-9050
Fax: 513-674-9052
Mike White

440 Marview Avenue
Akron, OH 44310
330/434-2442
Fax: 330/434-1208
Norm Jesser

OKLAHOMA:

Max Pratt Company, Inc
10305 Sunset Boulevard
The Village
Oklahoma City, OK 73120
405/752-4406
Fax: 405/752-4406
Jim Walsh

OREGON:

Performance Reps, N.W.
7945 S.W. Mohawk Drive
Tualatin, OR 97062
503/692-1552
Fax: 503/692-7955
Harrison Lee

JACKSON MAINTENANCE & REPAIR CENTER NETWORK

ALABAMA:

Jones-Mcleod Appliance Service
1616 7th Avenue North
Birmingham, AL 35203
205/251-0159
800/821-1150

Jones-Mcleod Appliance Service
854 Lakeside Drive
Mobile, AL 36693
205/666-7278
800/237-9859

ARIZONA:

Authorized Commercial Food Equipment Service
1938 East Osborn Road
Phoenix, AZ 85016
602/234-2443
800/824-8875 (AZ only)

ARKANSAS:

Bromley Parts & Service
806 Izard Street
Little Rock, AR 72201
501/374-0281
800/482-9269

CALIFORNIA:

P & D Appliance Service
100 South Linden Avenue
S. San Francisco, CA 94080
415/861-1414
800/424-1414

P & D Appliance Service
4220-C Roseville Road
N. Highlands, CA 95660
916/974-2772
800/824-7219

Barkers Food Machinery Service
5367 Second Street
Irwindale, CA 91706
818/960-9390
800/258-6999

GCS Service, Inc
946 East 12th Street
Los Angeles, CA 90021
213/749-7785
800/327-1433

GCS Service, Inc
9030 Kenamar Drive
Ste 314
San Diego, CA 92121
619/549-8411
800/422-7278

COLORADO:

GCS Service, Inc
10525 East 40th Avenue
Ste. 206
Denver, CO 80239
303/371-9054
800/972-5314

Metro Appliance Service
1640 S. Broadway
Denver, CO 80210
303/778-1126
800/525-3532

CONNECTICUT:

GCS Service, Inc
292 Murphy Road
Hartford, CT 06114
203/549-5575
800/523-7901 (CT only)
800/723-1562 (MA only)

DELAWARE:

Food Service Equipment
2101 Parkway South
Broomall, PA 19008
610/356-6900

FLORIDA:

Commercial Appliance
8416 Laurel Fair Circle
Building 6 Suite 114
Tampa, FL 33610
813/663-0313
800/282-4718

GCS Service, Inc
3373 NW 168th Street
Miami, FL 33056
305/621-6666
800/766-8966

GCS Service, Inc
4303 Vineland Road
Ste. F11
Orlando, FL 32811
407/338-7322
800/338-7322

GEORGIA:

Southeastern Restaurant Svc.
2200 Norcross Parkway
Suite 210
Norcross, GA 30071
404/446-6177
800/235-6516

HAWAII:

Food Equipment Parts & Service Co.
300 Puuhale Road
Honolulu, HI 96819
808/847-4871

IDAHO:

Restaurant Appliance Service
7219 Roosevelt Way NE
Seattle, WA 98115
206/524-8200
800/433-9390

Ron's Service
703 E. 44th Street
Ste. 10
Garden City, ID 83714
208/375-4073

ILLINOIS:

Cones Repair Service
2408 40th Avenue
Moline, IL 61265
309/797-5323
800/716-7070

Eichenauer Services
130 S. Oakland Street
Decatur, IL 62522
217/429-4229

GCS Service, Inc
696 Larch Avenue
Elmhurst, IL 60126
708/941-7800

INDIANA:

Commercial Parts & Service
5310 E. 25th Street
Indianapolis, IN 46218
317/545-9655
800/727-8710

IOWA:

J.L. Tucker Company
815 N. 19th Street
Omaha, NE 68102
402/345-7400

KANSAS:

GCS Service, Inc
2213 Riverfront Drive
Kansas City, MO 64120
816/472-6477
800/229-6477

KENTUCKY:

Certified Service Center
4946-50 Paddock Road
Cincinnati, OH 45237
513/242-3139
800/543-2060

LOUISIANA:

Bana Parts Inc
1501 Kueble Street
Harahan, LA 70123
504/734-0076
800/832-7543

MAINE:

Ace Service Co.
95 Hampton Avenue
Needham, MA 02194
617/449-4220

Massachusetts Restaurant Supply
34 South Street
Somerville, MA 02143
617/868-1930

MARYLAND:

Electric Motor Repair
700 East 25th Street
Baltimore, MD 21218
410/467-8080
800/879-4994

Electric Motor Repair
106 Williamsport Circle
Salisbury, MD 21801
410/543-8080

Electric Motor Repair
2626 Pittman Drive
Silver Spring, MD 20910
301/588-8080

MASSACHUSETTS:

Ace Service Co.
95 Hampton Avenue
Needham, MA 02194
617/449-4220

Massachusetts Restaurant Supply
34 South Street
Somerville, MA 02143
617/868-1930

GCS Service, Inc
180 Second Street
Chelsea, MA 02150
617/889-9393
800/225-1155

MICHIGAN:

Jackson Dishwasher Service
3980 Benstein Road
Commerce Twshp, MI 48382
248/363-4159
800/332-4053

MINNESOTA:

Metro Appliance Service
10911 W. Highway 55
Minneapolis, MN 55441
612/546-4221
800/345-4221

JACKSON SALES REPRESENTATIVES' TERRITORIES

PENNSYLVANIA:

Eastern:

Counties east of and including Tioga, Lycoming, Union, Juanita, Mifflin, Perry and Franklin.

Starliper & Associates

326 Gordon Drive
Lionville, PA 19353
610/363-5688

Fax: 610/363-6746

Eric Starliper, Chuck Starliper, Debbie McCormack, David Basch

Western:

Counties west of and including Potter, Clinton, Centre, Fulton and Huntingdon.

Plato, Graf & Associates, Inc

18 Meadowlark Drive
Fairport, NY 14450
716/377-1210

Fax: 716/377-6169

David Graf, David Bonfield

RHODE ISLAND:

Marshall Associates, Inc

40 Beach Street
Manchester, MA 01944
978/526-4911

Fax: 978/526-1128

Gerry Dackert, CFSP;
Tom Lawler, CFSP; Kenneth Lawler

SOUTH CAROLINA:

Collins Associates, Inc

430 Crompton Street
Charlotte, NC 28273
704/588-8200

Fax: 704/588-8338

David Collins, Joe Benson,
Lou Burmoski, Ron Every,
Kathy Hughes

SOUTH DAKOTA:

Hollander Company

7260 Washington Ave South
Eden Prairie, MN 55344
612/829-5500

Fax: 612/829-9664

Tim Preiner, Jerry LaMere,
Mitch Landis

TENNESSEE:

Eastern:

Counties east of and including Stewart, Houston, Humphreys, Perry and Harding

Master Marketing South

6190 Regency Pkwy,
Suite 318
Norcross, GA 30071

770/409-1980

Fax: 770/409-1881

Bruce Marlette, Terry Tanner,
Jerry Hennebaul, Walter Rehm,
Darren Hawkins, Terri Smith

Western:

Counties west of the Tennessee River, including Henry, Benton and Decatur.

WTD Associates

325 N. 18th Avenue
Laurel, MS 39440
800/821-2597

Fax: 601/649-4406

Wally Damlouji, Shirley Simpson, Paul Damlouji

TEXAS:

Max Pratt Co., Inc

1522 E. Houston Street
Sherman, TX 75090
903/893-7315

Fax: 903/893-4851

Max Pratt, Gary Pratt

3118 Holly Green
Kingwood, TX 77339
281/360-5493

Fax: 281/360-0852

Perry Pratt, CFSP; Becky Pratt

UTAH:

Tom Redditt Sales Agency

345 East 4500 South
Suite 200
Murray, UT 84107

801/263-1777

Fax: 801/263-7797

Steve Lambert, Debbie Sudbury

VERMONT:

Marshall Associates, Inc

40 Beach Street
Manchester, MA 01944
978/526-4911

Fax: 978/526-1128

Gerry Dackert, CFSP;
Tom Lawler, CFSP; Kenneth Lawler

VIRGINIA:

High, Sabatino and Huber, Inc

10219 Delray Road
Glen Allen, VA 23060
804/672-8016

Fax: 804/672-1099

Larry J. Huber

2645 Bernadotte Street
Virginia Beach, VA 23456
757/427-9381

Fax: 757/427-5577

Charlie Anthony

10106 Oat Lands Place
Fredricksburg, VA 22408
540/898-6072

Fax: 540/891-2228

Harold Spotts

WASHINGTON:

Performance Reps, N.W.

9923 S.W. 178th Street
P.O. Box 971
Vashon, WA 98070

206/463-6565

Fax: 206/463-3455

Don Cunningham, Mike Cunningham, Greg Stoffer,
Joyce Smith, Jeff Cunningham,
Gert Cunningham

WEST VIRGINIA:

Plato, Graf & Associates, Inc

18 Meadowlark Drive
Fairport, NY 14450
716/377-1210

Fax: 716/377-6169

David Graf, David Bonfield

WISCONSIN:

Eastern:

Counties east of and including Vilas, Oneida, Wood, Lincoln, Marathon, Juneau, Sauk, Richland and Grant

The Redco Group

11907 W. Dearborn Avenue
Wauwatosa, WI 53226
414/774-9599

Fax: 414/774-2410

Larry Popp, Russ Geiger, Sue Lutz, Dave Hartlerode

Western:

Counties west of and including Iron, Price, Taylor, Clark, Jackson, Monroe, Vernon and Crawford.

Hollander Company

7260 Washington Ave South
Eden Prairie, MN 55344
612/829-5500

Fax: 612/829-9664

Tim Preiner, Jerry LaMere,
Mitch Landis

WYOMING:

Tom Redditt Sales Agency

1445 Grove Street
Denver, CO 80204-0157
303/571-5100

Fax: 303/623-0618

Patrick Maher, Lance Redditt,
Tom Redditt Jr., Darcy Kerstiens, Bruce McAdow

INTERNATIONAL:

CANADA:

Consult Factory

EXPORT:

South America, Central America, Caribbean, Far East and Southeast Asia

H.D. Sheldon & Company, Inc

19 Union Square West
New York, NY 10003
212/924-6920

Fax: 212/627-1759

Robert Metros, Matthew Pinsley

7850 N.W. 146th Street
Ste. 407

Miami Lakes, FL 33016
305/828-4060

Fax: 305/828-0507

Richard Taft, John Harrison

Kingdom of Saudi Arabia, United Arab Emirates, Egypt, Jordan, Lebanon, Syria and Qatar

Al Salem Industrial Kitchens

P.O. Box 3143
Jeddah-21471

Saudi Arabia

011-966-2-663-7090

Fax: 011-966-2-663-6807

Mohammad Hamdan

JACKSON MAINTENANCE & REPAIR CENTERS

ALABAMA

JONES-McLEOD APPLIANCE

1616 7TH AVE. NORTH
BIRMINGHAM, AL 35203
(205) 251-0159
800-821-1150
FAX: (205) 322-1440
service@jones-mcleod.com

JONES-McLEOD APPLIANCE

854 LAKESIDE DRIVE
MOBILE, AL 36693
(334) 666-7278
800-237-9859
FAX: (334) 661-0223

ALASKA

RESTAURANT APPLIANCE SER- VICE

7219 ROOSEVELT WAY NE
SEATTLE, WA 98115
(206) 524-8200
800-433-9390
FAX: (206) 525-2890
info@restappl.com

ARIZONA

AUTHORIZED COMMERCIAL FOOD EQMT. SVC

4832 SOUTH 35TH STREET
PHOENIX, AZ 85040
(602) 234-2443
800-824-8875
FAX: (602) 232-5862
acsboss@aol.com

GCS SERVICE INC. #78

5052 SOUTH 40TH STREET
PHOENIX, AZ 85040
(602) 474-4510
800-510-3497
FAX: (602) 470-4511
phoenix@gcssvc.com

ARKANSAS

BROMLEY PARTS & SVC

10TH AND RINGO
P.O. BOX 1688
LITTLE ROCK, AR 72202
(501) 374-0281
(800) 482-9269
FAX: (501) 374-8352
brom@mindspring.com

COMMERCIAL PARTS & SVC.

3717 CHERRY ROAD
MEMPHIS, TN 38118
(901) 366-4587
800-262-9155
FAX: (901) 366-4588

CALIFORNIA

BARKERS FOOD MACHINERY EQUIPMENT

5367 SECOND STREET
IRWINDALE, CA 91706
(626) 960-9390
800-258-6999
FAX: (626) 337-4541
bfms@jps.net

GCS SERVICE INC. #24

1100 EAST PICO BLVD.
LOS ANGELES, CA 90021
(213) 683-2090
800-327-1433
FAX: (213) 683-2099
los_angeles@gcssvc.com

GCS SERVICE INC. #24

650 S. GRAND AVE. STE 111
SANTA ANA, CA 92705
(714) 542-1798
800-540-0719
FAX: (714) 542-4787
santa_ana@gcssvc.com

GCS SERVICE INC. #52

360 LITTLEFIELD
S. SAN FRANCISCO, CA 94080
(650) 635-0720
800-969-4427
FAX: (650) 871-4019
san_francisco@gcssvc.com

GCS SERVICE INC. #84

9030 KENAMAR DR. STE 313
SAN DIEGO, CA 92121
(858) 549-8411
800-422-7278
FAX: (858) 549-2323
san_diego@gcssvc.com

P & D APPLIANCE SVC

100 SOUTH LINDEN AVE.
S. SAN FRANCISCO, CA 94080
(650) 635-1900
800-424-1414
FAX: (650) 635-1919
pndappl@aol.com

P & D APPLIANCE

4220-C ROSEVILLE ROAD
NORTH HIGHLANDS, CA 95660
(916) 974-2772
800-824-7219
FAX: (916) 974-2774

COLORADO

GCS SERVICE INC.

4251 S. NATCHES CT. #60
UNIT C
SHERIDAN, CO 80110
(303) 371-9054
800-972-5314
FAX: (303) 371-4754
denver@gcssvc.com

HAWKINS COMMERCIAL APPLIANCE SERVICE

300 S. WYANDOT STREET
ENGLEWOOD, CO 80110
(303) 781-5548
800-624-2117
FAX: (303) 761-8861

METRO APPLIANCE SERVICE

1640 S BROADWAY
DENVER, CO 80210
(303) 778-1126
800-525-3532
FAX: (303) 778-0268
metroappl@aol.com

CONNECTICUT

GCS SERVICE INC. #06

302 MURPHY ROAD
HARTFORD, CT 06114
(860) 549-5575
800-423-1562
FAX: (860) 527-6355
hartford@gcssvc.com

DELAWARE

ELMER SCHULTZ SERVICE

36 BELMONT AVE.
WILLMINGTON, DE 19804
(302) 655-8900
800-225-0599
FAX: (302) 656-3673
elmer2@erols.com

EMR SERVICE DIVISION

106 WILLIAMSPORT CIRCLE
SALISBURY, MD 21804
(410) 543-8197
FAX: (410) 548-4038

FOOD SERVICE EQMT.

2101 PARKWAY SOUTH
BROOMALL, PA 19008
(610) 356-6900
FAX: (610) 356-2038
dancerule@aol.com

GCS SERVICE INC. #44

817 N THIRD STREET
P.O. BOX 3564
PHILADELPHIA, PA 19123
(215) 925-6217
800-441-9115
FAX: (215) 925-6208
philadelphia@gcssvc.com

FLORIDA

COMMERCIAL APPLIANCE SERVICE

8416 LAUREL FAIR CIRCLE
BLDG 6, SUITE 114
TAMPA, FL 33610
(813) 663-0313
800-282-4718
FAX: (813) 663-0212
commercialappliance@worldnet.att.net

GCS SERVICE INC #15

3373 NW 168TH ST.
MIAMI, FL 33056
(305) 621-6666
800-766-8966
FAX: (305) 621-6656
miami@gcssvc.com

GCS SERVICE INC #14

3902 CORPOREX PARK DR.
SUITE 350
TAMPA, FL 33619
(813) 626-6044
800-282-3008
FAX: (813) 621-1174
tampa@gcssvc.com

GCS SERVICE INC #13

4305 VINELAND RD STE G-12
ORLANDO, FL 32811
(407) 841-2551
800-338-7322
FAX: (407) 423-8425
orlando@gcssvc.com

JONES-McLEOD APPLIANCE SVC

854 LAKESIDE DRIVE
MOBILE, AL 36693
(334) 666-7278
800-237-9859
FAX: (334) 661-0223
service@jones-mcleod.com

GEORGIA

GCS SERVICE INC #16

3127 PRESIDENTIAL DR.
ATLANTA, GA 30340
(770) 452-7322
800-334-3599
FAX: (770) 452-7473
atlanta@gcssvc.com

SOUTHEASTERN RESTAURANT SVC.

2200 NORCROSS PKWY.
SUITE 210
NORCROSS, GA 30071
(770) 446-6177
800-235-6516
FAX: (770) 446-3157
srsatl@aol.com

WHALEY FOODSERVICE REPAIRS

109-A OWENS INDUSTRIAL
DRIVE
SAVANNAH, GA 31405
(912) 447-0827
888-765-0036
FAX: (912) 447-0826

JACKSON MAINTENANCE & REPAIR CENTERS

HAWAII

FOOD EQMT. PARTS & SERVICE CO.

300 PUUHALE RD.
HONOLULU, HI 96819
(808) 847-4871
FAX: (808) 842-1560
fepsco@hula.net

IDAHO

RESTAURANT APPLIANCE SVC.

7219 ROOSEVELT WAY NE
SEATTLE, WA 98115
(206) 524-8200
800-433-9390
FAX: (206) 525-2890
info@restappl.com

RON'S SERVICE

703 E 44TH STREET STE 10
GARDEN CITY, ID 83714
(208) 375-4073
FAX: (208) 375-4402

ILLINOIS

CONES REPAIR SVC.

2408 40TH AVE.
MOLINE, IL 61265
(309) 797-5323
800-716-7070
FAX: (309)797-3631
jackb@cones.com

EICHENAUER SERVICES INC.

130 S OAKLAND ST.
DECATUR, IL 62522
(217) 429-4229
800-252-5892
FAX: (217) 429-0226
esi@esiquality.com

GCS SERVICE INC. #12

696 LARCH AVE.
ELMHURST, IL 60126
(630) 941-7800
800-942-9689
FAX: (630) 941-6048
chicago@gcssvc.com

GCS SERVICE INC. #80

9722 REAVIS PARK DR.
ST. LOUIS, MO 63123
(314) 683-7444
800-284-4427
FAX: (314) 638-0135
st_louis@gcssvc.com

INDIANA

GCS SERVICE INC.

5310 E 25TH STREET
INDIANAPOLIS, IN 46218
(317) 545-9655
800-727-8710
FAX: (317) 549-6286
peproane@aol.com

IOWA

GOODWIN-TUCKER GROUP

3509 DELAWARE AVENUE
DES MOINES, IA 50313
(515) 262-9308
800-372-6066
FAX: (515) 262-2936
goodwintuc@aol.com

CONES REPAIR SVC.

1056 27TH AVENUE SW
CEDAR RAPIDS, IA 52404
(319) 365-3325
800-747-3326
FAX: (319) 365-0885

KANSAS

GCS SERVICE INC. #82

6107 CONNECTICUT
KANSAS CITY, MO 64120
(816) 920-5999
800-229-6477
FAX: (816) 920-7387
kansas_city@gcssvc.com

KENTUCKY

CERTIFIED SERVICE CENTER

RAMCO BUSINESS PARK
4283 PRODUCE ROAD
LOUISVILLE, KY 40218
(502) 964-7007
800-637-6350
FAX: (502) 964-7202
droenigk@certifiedsc.com

CERTIFIED SERVICE CENTER

1051 GOODWIN DRIVE
LEXINGTON, KY 40505
(606) 254-8854
800-432-9269
FAX: (606) 231-7781
jardkins@certifiedsc.com

GCS SERVICE INC.

4204 SOUTH BROOK STREET
LOUISVILLE, KY 40214
(502) 367-1788
800-752-6160
FAX: (502) 367-0400

GCS SERVICE INC.

1002 NANDINO BLVD.
LEXINGTON, KY 40511
(606) 255-0746
800-432-9260
FAX: (606) 255-0748

LOUISIANA

BANA PARTS INC.

1501 KUEBLE STREET
HARAHAN, LA 70123
(504) 734-0076
800-325-7543
FAX: (504) 734-8456

BANA PARTS INC.

4028 GREENWOOD ROAD
SHREVEPORT, LA 71109
(318) 631-6550
800-832-6550
FAX: (318) 636-5675

MAINE

GCS SERVICE INC. #09

180 SECOND STREET
CHELSEA, MA 02150
(617) 889-9393
800-225-1155
FAX: (617) 889-1222
boston@gcssvc.com

MASSACHUSETTS RESTAURANT SUPPLY

34 SOUTH STREET
SOMERVILLE, MA 02143
(617) 868-1930
800-338-6737
FAX: (617) 686-5331

NORTHERN CROWN SERVICES, INC.

225 INDUSTRIAL WAY
PORTLAND, ME 04103
(207) 797-7333
(800) 696-7560
FAX: (207) 696-1128
steve@northerncrownservices.com or
richard@northerncrownservices.com

MARYLAND

EMR SERVICE DIVISION

700 EAST 25TH STREET
BALTIMORE, MD 21218
(410) 467-8080
800-879-4994
FAX: (410) 467-4191
baltparts@emrco.com

EMR SERVICE DIVISION

106 WILLIAMSPORT CIRCLE
SALISBURY, MD 21804
(410) 543-8197
888-687-8080
FAX: (410) 548-4038
baltparts@emrco.com

EMR SERVICE DIVISION

2626 PITTMAN DRIVE
SILVER SPRING, MD 20910
(301) 588-8080
800-348-2365
FAX: (301) 588-6985
baltparts@emrco.com

GCS SERVICE INC. #07

2660 PITTMAN DRIVE
SILVER SPRING, MD 20910
(301) 585-7550 (DC)
(410) 792-0338 (BALT)
(800) 638-7278
FAX: (301) 495-4410
dc_baltimore@gcssvc.com

MASSACHUSETTS

ACE SERVICE CO.

95 HAMPTON AVE.
NEEDHAM, MA 02494
(781) 449-4220
800-225-4510 MA & NH
FAX: (781) 444-4789
taceservice@aol.com

MASSACHUSETTS RESTAURANT SUPPLY

34 SOUTH STREET
SOMERVILLE, MA 02143
(617) 868-1930
800-338-6737
FAX: (617) 868-5331

GCS SERVICE INC. #09

180 SECOND STREET
CHELSEA, MA 02150
(617) 889-9393
800-225-1155
FAX: (617) 889-1222
boston@gcssvc.com

GCS SERVICE INC. #06

302 MURPHY ROAD
HARTFORD, CT 06114
(860) 549-5575
800-723-1562
FAX: (860) 527-6355
hartford@gcssvc.com

MICHIGAN

GCS SERVICE INC. #20

31829 WEST EIGHT MILE RD.
LIVONIA, MI 48152
(248) 426-9500
800-772-2936
FAX: (248) 426-7555
detroit@gcssvc.com

JACKSON SERVICE COMPANY

3980 BENSTEIN RD.
COMMERCE TWSHP, MI 48382
(248) 363-4159
800-332-4053
FAX: (248) 363-5448

GCS SERVICE INC. #21

3516 ROGER B. CHAFFE SE
GRAND RAPIDS, MI 49548
(616) 241-0200
800-823-4866
FAX: (616) 241-0541
grand_rapids@gcssvc.com

MINNESOTA

GCS SERVICE INC.

2857 LOUISIANA AVENUE N.
MINNEAPOLIS, MN 55427
(612) 546-4221
800-345-4221
FAX: (612) 546-4286
minneapolis@gcssvc.com

JACKSON MAINTENANCE & REPAIR CENTERS

MISSISSIPPI

COMMERCIAL PARTS & SVC.

5755 GALLANT DRIVE
JACKSON, MS 39206
(601) 956-7800
800-274-5954
FAX: (601) 956-1200

COMMERCIAL PARTS & SVC.

3717 CHERRY ROAD
MEMPHIS, TN 38118
(901) 366-4587
800-262-9155
FAX: (901) 366-4588

MISSOURI

GCS SERVICE INC. #82

6107 CONNECTICUT
KANSAS CITY, MO 64120
(816) 920-5999
800-229-6477
FAX: (816) 920-7387
kansas_city@gcssvc.com

GCS SERVICE INC. #80

9722 REAVIS PARK DR.
ST. LOUIS, MO 63123
(314) 638-7444
800-284-4427
FAX: (314) 638-0135
st_louis@gcssvc.com

KAMMERLIN PARTS & SVC.

2728 LOCUST STREET
ST. LOUIS, MO 63103
(314) 535-2222
FAX: (314) 535-6205

MONTANA:

RESTAURANT APPLIANCE SVC.

7219 ROOSEVELT WAY NE
SEATTLE, WA 98115
(206) 524-8200
800-433-9390
FAX: (206) 525-2890
info@restappl.com

NEBRASKA

GOODWIN - TUCKER GROUP

815 N 19TH STREET
OMAHA, NE 68102
(402) 345-7400
800-228-0342
FAX: (402) 346-6145
goodwintuc@aol.com

NEVADA:

BURNEY'S COMMERCIAL SERVICE

4480 ALDEBARAN AVE.
LAS VEGAS, NV 89103
(702) 736-0006
FAX: (702) 798-7531

GCS SERVICE INC. #77

3585 EAST PATRICK LANE
SUITE 1000
LAS VEGAS, NV 89102
(702) 450-3495
800-500-9060
FAX: (702) 450-3491
las_vegas@gcssvc.com

NEW HAMPSHIRE

GCS SERVICE INC. #09

180 SECOND STREET
CHELSEA, MA 02150
(617) 889-9393
800-225-1155
FAX: (617) 889-1222
boston@gcssvc.com

ACE SERVICE CO.

95 HAMPTON AVE.
NEEDHAM, MA 02494
(781) 449-4220
800-225-4510 MA & NH
FAX: (781) 444-4789
taceservice@aol.com

MASSACHUSETTS RESTAU- RANT SUPPLY

34 SOUTH STREET
SOMERVILLE, MA 02143
(617) 868-1930
800-338-6737
FAX: (617) 868-5331

NEW JERSEY:

FOOD SERVICE EQMT.

2101 PARKWAY SOUTH
BROOMALL, PA 19008
(610) 356-6900
FAX: (610) 356-2038
dancerule@aol.com

GCS SERVICE INC. #2

1 MADISON STREET
BUILDING F
EAST RUTHERFORD, NJ 07073
(973) 614-0003
800-399-8294
FAX: (973) 614-0230
east_rutherford@gcssvc.com

GCS SERVICE INC. #44

817 N THIRD STREET
PHILADELPHIA, PA 19123
(215) 925-6217
800-441-9115
FAX: (215) 925-6208
philadelphia@gcssvc.com

JACKSON FASPRAY SVC.

155 SARGEANT AVE.
CLIFTON, NJ 07013
(973) 471-8000
800-356-6740
FAX: (973) 471-1289

NEW MEXICO

STOVE PARTS SUPPLY CO.

2120 SOLANA STREET
FORT WORTH, TX 76117
(817) 831-0381
800-433-1804
FAX: (817) 834-7754
bua@stoveparts.com

NEW YORK

ALL ISLAND REPAIR

40-9 BURT DRIVE
DEER PARK, NY 11729
(631) 242-5588
800-323-9411
FAX: (631) 242-6102

APPLIANCE INSTALLATION AND SERVICE CORP.

1336 MAIN STREET
BUFFALO, NY 14209
(716) 884-7425
800-722-1252
FAX: (716) 884-0410
ais@worldnet.att.net

B.E.S.T. INC.

3003 GENESEE STREET
BUFFALO, NY 14225
(716) 893-6464
800-338-5011
FAX: (716) 893-6466
bestserv@aol.com

DUFFY'S EQUIPMENT SVC.

3138 ONEIDA STREET
SAUQUOIT, NY 13456
(315) 737-9401
800-443-8339
FAX: (315) 737-7132
duffyequip@aol.com

GCS SERVICE INC. #01

932 GRAND STREET
BROOKLYN, NY 11211
(718) 486-5220
800-969-4271
FAX: (718) 486-6772
new_york@gcssvc.com

JACKSON FASPRAY SVC.

155 SARGEANT AVE.
CLIFTON, NJ 07013
(973) 471-8000
800-356-6740
FAX: (973) 471-1289
jfs155@aol.com

NORTHERN PARTS & SVC.

21 NORTHERN AVENUE
PLATTSBURGH, NY 12903
(518) 563-3200
800-634-5005
FAX: (800) 782-5424
info@northernparts.com

NORTH CAROLINA

WHALEY FOODSERVICE

8334-K ARROWRIDGE BLVD
CHARLOTTE, NC 28273
(704) 529-6242
FAX: (704) 529-1558
info@whaleyfoodservice.com

WHALEY FOODSERVICE REPAIRS

203-D CREEK RIDGE RD.
GREENSBORO, NC 27406
(336) 333-2333
FAX: (336) 333-2533
info@whaleyfoodservice.com

WHALEY FOODSERVICE REPAIRS

335-105 SHERWEE DRIVE
RALEIGH, NC 27603
(919) 779-2266
FAX: (919) 779-2224
info@whaleyfoodservice.com

WHALEY FOODSERVICE REPAIRS

6418-101 AMSTERDAM WAY
WILMINGTON, NC 28405
(910) 791-0000
FAX: (910) 791-6662
info@whaleyfoodservice.com

NORTH DAKOTA

GCS SERVICE INC.

2857 LOUISIANA AVENUE N.
MINNEAPOLIS, MN 55427
(612) 546-4221
800-345-4221
FAX: (612) 546-4286
minneapolis@gcssvc.com

OHIO

CERTIFIED SERVICE CENTER

890 REDNA TERRACE
CINCINNATI, OH 45215
(513) 772-6600
800-543-2060
FAX: (513) 612-6600
sbarasch@certifiedsc.com

COMMERCIAL PARTS & SVC. OF COLUMBUS

1150 WEST MOUND STREET
COLUMBUS, OH 43223
(614) 221-0057
800-837-8327
FAX: (614) 221-3622

GCS SERVICE INC.

2830 JOHNSTOWN ROAD
COLUMBUS, OH 43219
(614) 476-3225
800-282-5406
FAX: (614) 476-1196
columbus@gcssvc.com

JACKSON MAINTENANCE & REPAIR CENTERS

ELECTRICAL APPLIANCE REPAIR SVC.

5805 VALLEY BELT ROAD
CLEVELAND, OH 44131
(216) 459-8700
800-621-8259
FAX: (216) 459-8707
trears@aol.com

OKLAHOMA

HAGAR RESTAURANT EQMT.

1229 W MAIN STREET
OKLAHOMA CITY, OK 73106
(405) 235-2184
800-445-1791
FAX: (405) 236-5592

KRUEGER INC.

100 NE 24TH STREET
OKLAHOMA CITY, OK 73105
(405) 528-8883
800-522-8069
FAX: (405) 528-5405
kruegers@swbell.net

OREGON

RON'S SERVICE

16364 SW 72ND AVE
PORTLAND, OR 97224
(503) 624-0890
800-851-4118
FAX: (503) 684-6107
lrobinson@ronsservice.com

PENNSYLVANIA

A.I.S. COMMERCIAL PARTS & SERVICE

1816 WEST 26TH STREET
ERIE, PA 16508
(814) 456-3732
800-332-3732
FAX: (814) 452-4843
aiserie@aol.com

AFS-AUTHORIZED FACTORY SVC. INC.

940 FIRST AVE.
CORAOPOLIS, PA 15108
(412) 262-2330
800-222-8767
FAX: (412) 262-2245

ELMER SCHULTZ SVC.

540 NORTH 3RD STREET
PHILADELPHIA, PA 19123
(215) 627-5400
FAX: (215) 627-5408
elmer2@erols.com

FOOD SERVICE EQMT.

2101 PARKWAY SOUTH
BROOMALL, PA 19008
(610) 356-6900
FAX: (610) 356-2038
dancerule@aol.com

GCS SERVICE INC. #44

4400 LEWIS ROAD, SUITE E
HARRISBURG, PA 17111
(717) 564-3282
800-367-3225
FAX: (717) 564-9286
harrisburg@gcssvc.com

GCS SERVICE INC. #44

817 N THIRD STREET
P.O. BOX 3564
PHILADELPHIA, PA 19123
(215) 925-6217
800-441-9115
FAX: (215) 925-6208
philadelphia@gcssvc.com

GCS SERVICE INC. #48

210 VISTA PARK DRIVE
PITTSBURGH, PA 15205
(412) 787-1970
800-738-1221
FAX: (412) 787-5005
pittsburgh@gcssvc.com

K & D PARTS AND SERVICE CO.

1833-41 N CAMERON STREET
HARRISBURG, PA 17103
(717) 236-9039
800-932-0503
FAX: (717) 238-4367
kdparts-service@paonline.com

RHODE ISLAND

GCS SERVICE INC. #09

1002 WATERMAN AVE.
EAST PROVIDENCE, RI 02914
(401) 434-6803
800-462-6012
FAX: (401) 438-9400
providence@gcssvc.com

SOUTH CAROLINA

WHALEY FOODSERVICE REPAIRS

I 26&US1
P.O. BOX 4023
WEST COLUMBIA, SC 29170
(803) 791-4420
800-877-2662
FAX: (803) 794-4630
info@whaleyfoodservice.com

WHALEY FOODSERVICE REPAIRS

748 CONGAREE ROAD
GREENVILLE, SC 29607
(864) 234-7011
800-494-2539
FAX: (864) 234-6662
info@whaleyfoodservice.com

WHALEY FOODSERVICE REPAIRS

1406-C COMMERCE PL.
MYRTLE BEACH, SC 29577
(843) 626-1866
FAX: (843) 626-2632
info@whaleyfoodservice.com

WHALEY FOODSERVICE REPAIRS

4740-A FRANCHISE STREET
N. CHARLESTON, SC 29418
(843) 760-2110
FAX: (843) 760-2255
info@whaleyfoodservice.com

SOUTH DAKOTA

GCS SERVICE INC.

2857 LOUISIANA AVENUE N.
MINNEAPOLIS, MN 55427
(612) 546-4221
800-345-4221
FAX: (612) 546-4286
minneapolis@gcssvc.com

TENNESSEE

COMMERCIAL PARTS & SVC.

3717 CHERRY ROAD
MEMPHIS, TN 38118
(901) 366-4587
800-262-9155
FAX: (901) 366-4588

COMMERCIAL APPLIANCE SVC.

919 8TH AVENUE SOUTH
NASHVILLE, TN 37203
(615) 254-0906
800-476-0906
FAX: (615) 254-0919
casnash@aol.com

COMMERCIAL PARTS & SVC.

748 FESSLERS LANE
NASHVILLE, TN 37210
(615) 244-8050
800-831-7174
FAX: (615) 244-8885
alesco1@aol.com

TEXAS

ARMSTRONG REPAIR CENTER

5110 GLENMOUNT DRIVE
HOUSTON, TX 77081
(713) 666-7100
800-392-5325
FAX: (713) 661-0520
gm@armstrongrepair.com

COMMERCIAL KITCHEN REPAIR CO.

1377 N BRAZOS
P.O. BOX 831128
SAN ANTONIO, TX 78207
(210) 735-2811
800-292-2120
FAX: (210) 735-7421
brock@commercialkitchen.com

GCS SERVICE INC. #90

10850 SANDEN DRIVE
DALLAS, TX 75238-5325
(972) 484-2954
800-442-5026
FAX: (972) 484-2531
dallas@gcssvc.com

GCS SERVICE INC. #88

8150 WESTPARK
HOUSTON, TX 77063
(713) 785-9187
800-868-6957
FAX: (713) 785-3979
houston@gcssvc.com

STOVE PARTS SUPPLY CO.

2120 SOLANA STREET
FORT WORTH, TX 76117
(817) 831-0381
800-433-1804
FAX: (817) 834-7754
bud@stoveparts.com

UTAH

LA MONICA'S RESTAURANT EQMT. SVC.

6182 SOUTH STRATLER
AVENUE
MURRAY, UT 84107
(801) 263-3221
800-527-2561
FAX: (801) 263-3229
lamonica81@aol.com

VERMONT

AUTHORIZED APPLIANCE SER- VICENTER OF VERMONT

74 RIVER STREET
RUTLAND, VT 05701
(802) 775-5588
800-874-1080
FAX: (802) 775-9593
suew
@authorizedapplianceofut.com

NORTHERN PARTS & SVC.

4874 S. CATHERINE STREET
PLATTSBURGH, NY 12901
(518) 563-3200
800-634-5005
FAX: (800) 782-5424
info@northernparts.com

GCS SERVICE INC. #09

180 SECOND STREET
CHELSEA, MA 02150
(617) 889-9393
800-225-1155
FAX: (617) 889-1222
boston@gcssvc.com

JACKSON MAINTENANCE & REPAIR CENTERS

VIRGINIA

DAUBERS, INC.

7645 DYNATECH COURT
SPRINGFIELD, VA 22153
(703) 866-3600
800-554-7788
FAX: (703) 866-4071
daubers@aol.com

GCS SERVICE INC. #07

2660 PITTMAN DRIVE
SILVER SPRING, MD 20910
(301) 585-7550(DC)
(410) 792-0388(BALT)
800-638-7278
FAX: (301)495-4410
dc_baltimore@gcssvc.com

GCS SERVICE INC. #18

2421 GRENOBLE RD.
RICHMOND, VA 23294
(804) 672-1700
800-899-5949
FAX: (804) 672-2888
richmond@gcssvc.com

GCS SERVICE INC. #18

5760 NORTHAMPTON BLVD.
STE 106
VIRGINIA BEACH, VA 23455
(757) 464-3500
800-476-4278
FAX: (757) 464-4106
virginia_beach@gcssvc.com

WASHINGTON

GCS SERVICE INC.

6114 SIXTH AVENUE SOUTH
SEATTLE, WA 98108
(206) 763-0353
800-211-4274
FAX: (206) 763-5943

RESTAURANT APPLIANCE SERVICE

7219 ROOSEVELT WAY, NE
SEATTLE, WA 98115
(206) 524-8200
800-433-9390
FAX: (206) 525-2890
info@restappl.com

WEST VIRGINIA

AFS-AUTHORIZED FACTORY SVC INC.

RT.-1 BOX 288
S. CHARLESTON, WV 25312
(304) 344-8225
800-654-4606
FAX: (304) 344-8248

WISCONSIN

APPLIANCE SERVICE CENTER, INC.

2439 ATWOOD AVE
MADISON, WI 53704
(608) 246-3160
800-236-7440
FAX: (608) 246-2721
ascmad@execpc.com

APPLIANCE SERVICE CENTER, INC.

6843 W. BELOIT RD.
WEST ALLIS, WI 53219
(414) 543-6460
800-236-6460
FAX: (414) 543-6480
ascmil@execpc.com

APPLIANCE SERVICE CENTER

786 MORRIS AVE
GREEN BAY, WI 54304
(920) 496-9993
800-236-0871
FAX: (920) 496-9927
ascfox@execpc.com

WYOMING

METRO APPLIANCE SERVICE

1640 S BROADWAY
DENVER, CO 80210
(303) 778-1126
800-525-3532
FAX: (303) 778-0268
metroappls@aol.com

INTERNATIONAL

GLOBAL PARTS AND SUPPLY

7758 NW 72ND ST
MIAMI, FL 33166
(305) 885-6353

H.D. SHELDON AND CO

19 UNION SQUARE, WEST
NEW YORK, NY 10003
(212) 627-1759
(212) 924-6920

CANADA

GARLAND COMMERCIAL RANGES LTD.

1177 KAMATO ROAD
MISSISSAUGA, ONTARIO
L4W 1X4
SALES (905) 206-8380
(905) 624-1419
FAX: (905) 624-1851

SERVICE 800-427-6668

FAX: 800-361-7745