

**NOTICE**

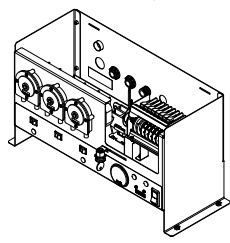
Machines with serial numbers before 16J325683 have the old timer.

**WARNING:**

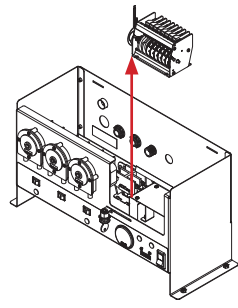


Disconnect electrical power at the breaker or disconnect switch and tag-out in accordance with procedures and codes.

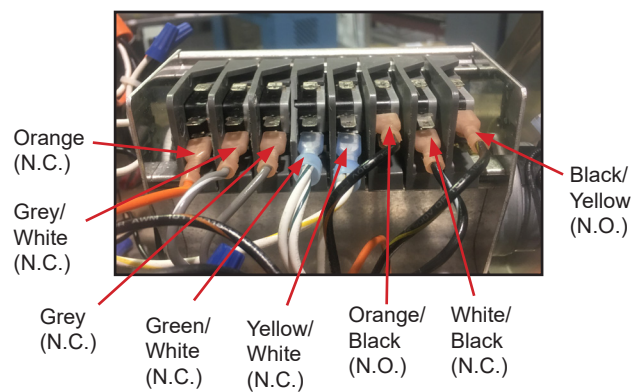
1. Remove the top of the control box.



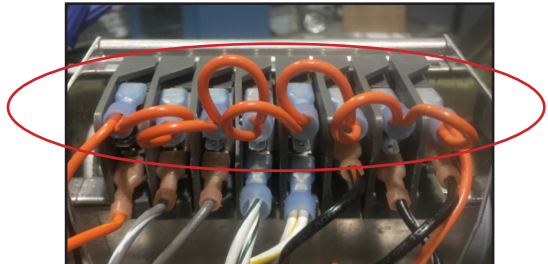
2. Remove the wires from the old timer.
3. Remove the old timer.



4. Replace with the new timer.
5. Configure wires as shown below:

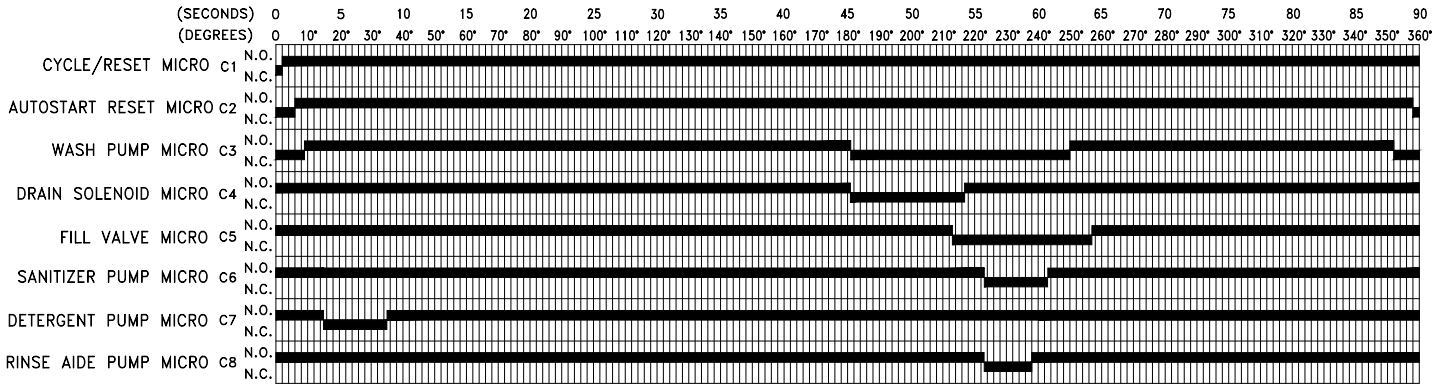


6. Place orange wires on top terminals.



7. The timer change is complete. See next page for more information.

Timing Chart



CAMs

