

# RackStar® 66 with Energy Recovery

Project \_\_\_\_\_  
 Item \_\_\_\_\_  
 Quantity \_\_\_\_\_  
 CSI Section 11400  
 Approval \_\_\_\_\_  
 Date \_\_\_\_\_

RackStar® 66 with Energy Recovery

## Models

### RackStar 66 with Energy Recovery



### Standard Features

- Energy Recovery
- Adjustable Rinse System
- 27kW electric booster heater
- Rainbow Rinse™ with arched rinse arm design
- 19-3/4" (502 mm) clearance
- WISR® Cleaning System
- Double-wall insulated doors retain heat, keeping wash water hot & generating less heat in the dishroom
- Self-cleaning wash arms
- Fully automatic, including auto-fill
- Adjustable vent cowl collars
- Exclusive EnergyGuard™ controls
- 22" pre-wash
- Self-draining stainless steel wash pump
- Digital LED control panel
- Strike plate table limit switch
- Large front access for ease of maintenance
- Stainless steel strainer pans
- Splash shields
- Stainless steel frame and legs
- Exhaust vent fan control
- Built-in pressure regulator
- 15kW wash tank heater
- Front dress panel
- Adjustable bullet feet

### Mandatory Specs

- Specify Voltage \_\_\_\_\_
- Specify Direction of Operation:
- Left to Right
- Right to Left

### Options

- Higher than Standard Chamber Height
- Single Point Connection
- 23" (584 mm) Unhooded Side Loader
- 30" (762 mm) Unhooded Side Loader
- Flanged Feet
- Prison Package

### Accessories

- 36-Compartment Rack
- 4-1/8" tall (104 mm)
- 5 - 5/8" tall (143 mm)
- 7" tall (178 mm)
- Combination Rack
- Peg Rack
- Sheet Pan Rack
- Drain Water Tempering Kit\*
- Scaltrol
- Water Hammer Arrestor

*\*Requires separate electrical connection*

### Specifications

- Uses 0.35 gallons of water (1.32 liters) per rack in Econo Rinse mode
- Uses 0.52 gallons of water (1.97 liters) per rack in Turbo Rinse mode
- Cleans 223 racks per hour
- Durable stainless steel construction
- 22" (559 mm) pre-wash section has three upper and one lower pre-wash arms



Intertek



Intertek

# RackStar® 66 with optional Energy Recovery

Left to Right

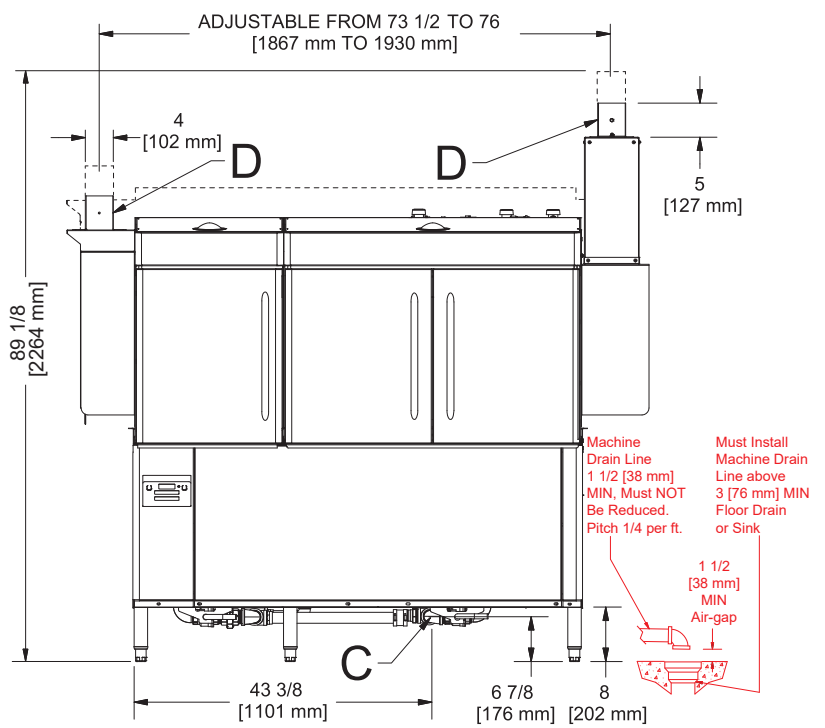
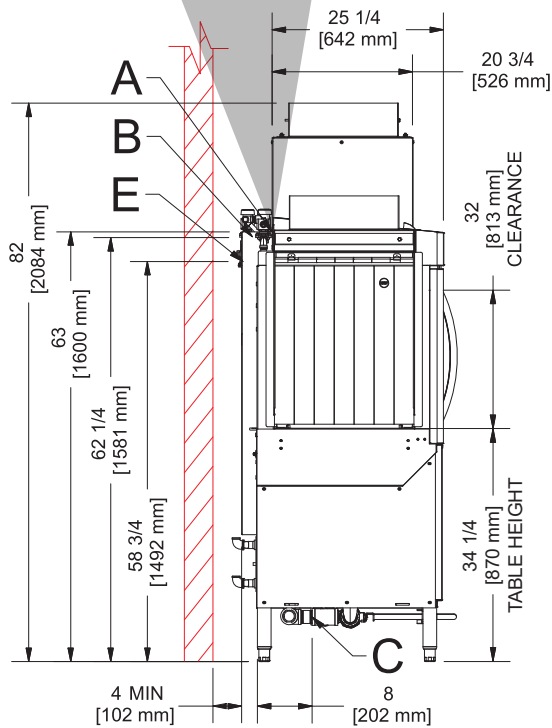
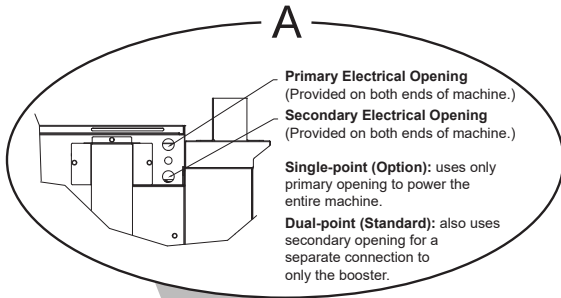
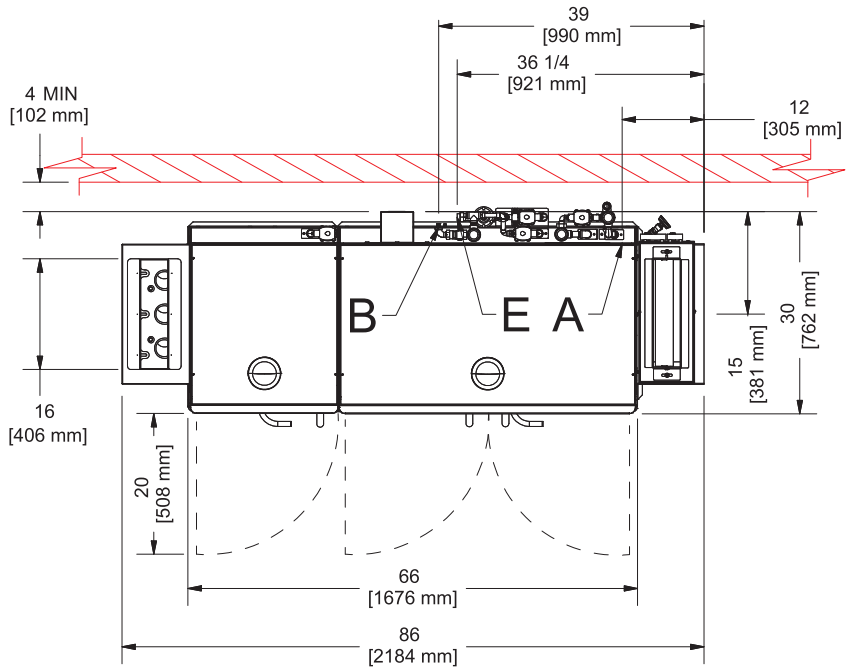
## LEGEND

- A - Electrical Connection
- B - Water Inlet  
(1/2" NPT, 110 °F MIN (27 kW Booster))
- C - Drain Connection  
(1 1/2" NPT)
- D - Vent Connections  
(Including Dampers)
- E - Energy Recovery Water Inlet  
(1/2" NPT, 55 °F MIN)

- — — — — - Open Door
- - - - - - High Hood Option

All dimensions from the floor can be increased 1 3/4" using the machine's adjustable feet.

Items in red are not supplied with the machine.

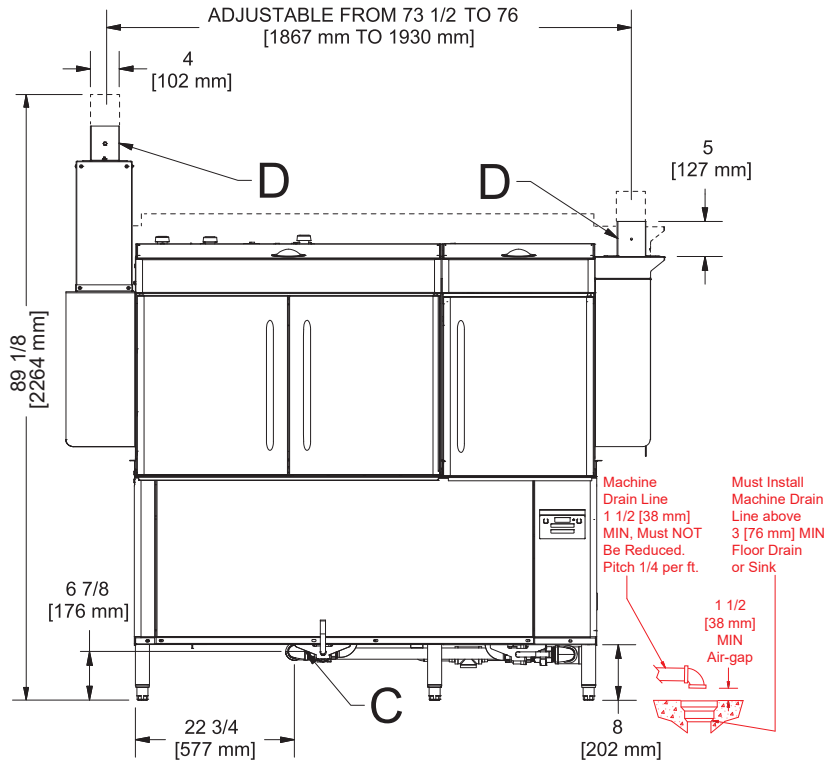
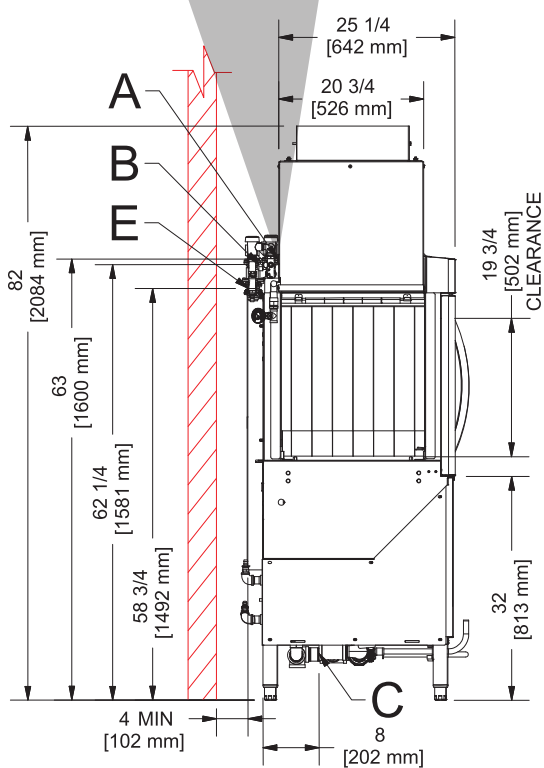
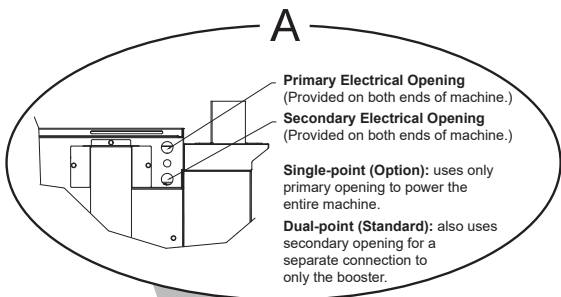
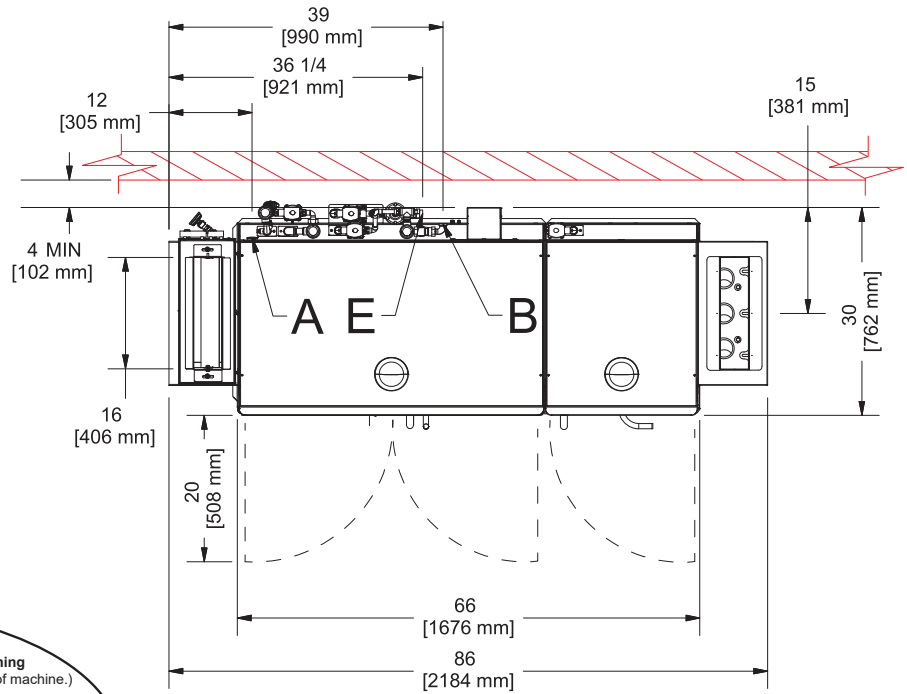


## LEGEND

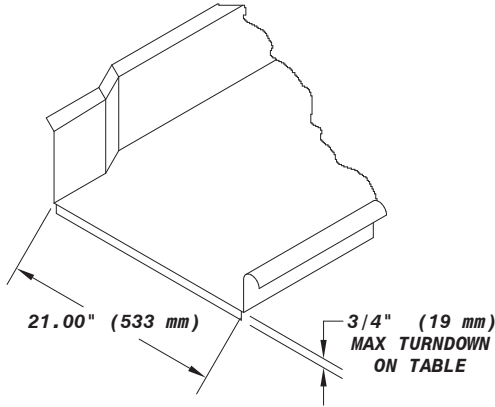
- A - Electrical Connection
- B - Water Inlet  
(1/2" NPT, 110 °F MIN (27 kW Booster))
- C - Drain Connection  
(1 1/2" NPT)
- D - Vent Connections  
(Including Dampers)
- E - Energy Recovery Water Inlet  
(1/2" NPT, 55 °F MIN)
- - Open Door
- - High Hood Option

All dimensions from the floor can be increased 1 3/4" using the machine's adjustable feet.

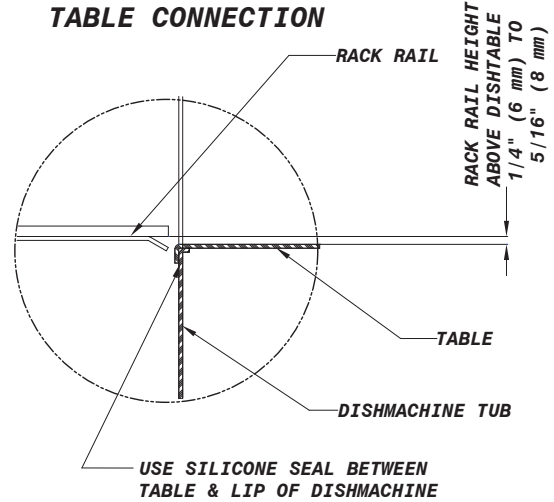
Items in red are not supplied with the machine.



### RECOMMENDED TABLE FABRICATION



### TABLE CONNECTION



MODEL NO.	MACHINE DIMENSIONS				DRAIN HEIGHT	SHIPPING INFORMATION					
	HEIGHT	LENGTH BETWEEN DISHTABLES	DEPTH	DEPTH WITH DOORS OPEN		WEIGHT	CLASS	CUBE	HEIGHT	WIDTH	DEPTH
RackStar 66 ER	82" (2084 mm)	66" (1676 mm)	30" (762 mm)	50" (1270 mm)	6-1/2" (165 mm)	1193 lbs (542 kg)	150	166.67 cu. ft.	75" (1905 mm)	96" (2439 mm)	40" (1016 mm)

OPERATING CAPACITY	
Racks per Hour	223
Dishes per Hour	5,575
Glasses per Hour	8,028

WATER REQUIREMENTS	
Hot water inlet temperature (minimum)	110° F (43° C)
Cold water inlet temperature (minimum)	55° F (43° C)
Gallons per Hour (Econo Rinse mode)	78 gal (295 L)
Gallons per Hour (Turbo Rinse mode)	116 gal (239.1 L)
Gallons per Rack (Econo Rinse mode)	0.35 gal (1.3 L)
Gallons per Rack (Turbo Rinse mode)	0.52 gal (1.97 L)
Waterline Size NPT	1/2"
Drainline Size IPS (minimum)	1-1/2"
Flow Pressure (PSI)	15
Flow Rate GPM (minimum)	1.3 (4.9 LPM)
Wash Tank Capacity	25 gal (95 L)

OPERATING TEMPERATURES	
Pre-wash (minimum)	110 - 140° F (43-60° C)
Wash (minimum)	160° F (71° C)
Rinse (minimum)	180° F (82° C)

ELECTRICAL REQUIREMENTS			
Power Supply	Total Load	Minimum Circuit Ampacity	Maximum Overcurrent Protection
<b>SINGLE POINT CONNECTION</b>			
208/60/3	133.0 A	135.3 A	140 A
230/60/3	115.5 A	117.6 A	125 A
460/60/3	57.9 A	59.0 A	60 A
208/60/1	227.0 A	230.4 A	240 A
230/60/1	195.1 A	198.2 A	210 A
<b>DUAL POINT CONNECTION</b>			
208/60/3 - Machine	58.1 A	60.4 A	65 A
208/60/3 - 27kW Booster	74.9 A	76.2 A	80 A
230/60/3 - Machine	50.5 A	52.6 A	60 A
230/60/3 - 27kW Booster	65.0 A	66.3 A	70 A
460/60/3 - Machine	25.4 A	26.5 A	30 A
460/60/3 - 27kW Booster	32.5 A	33.8 A	35 A
208/60/1 - Machine	97.2 A	100.6 A	110 A
208/60/1 - 27kW Booster	129.8 A	131.1 A	135 A
230/60/1 - Machine	82.7 A	85.7 A	95 A
230/60/1 - 27kW Booster	112.5 A	113.8 A	115 A

WASH PUMPS	
Pre-wash Pump Motor	2 hp
Pre-wash Pump Capacity	220 GPM (833 LPM)
Wash Pump Motor	3 hp
Wash Pump Capacity	270 GPM (1022 LPM)

CONVEYOR	
Conveyor Motor	1/4 hp
Conveyor Speed (feet per minute)	6.07 FPM (1.85 MPM)

VENTING REQUIREMENTS	
Input End	175 CFM
Output End	175 CFM
Total CFM	350 CFM

HOW TO SPECIFY: RackStar 66 with Energy Recovery

**Jackson WWS, Inc.**  
 Shipping Address: 6209 North U.S. Highway 25E, Gray, KY 40734  
 Mailing Address: P.O. Box 1060, Barbourville, KY 40906  
 Telephone: 888-800-5672 • Fax: 606-523-1799  
 Email: info@jacksonwws.com  
 07610-004-43-17 [07/26/21]

www.jacksonwws.com