

### PREPARATION



*Disconnect electrical power at the breaker or disconnect switch and lockout/tagout in accordance with procedures and codes.*

*Ensure that incoming water to the machine is secured either by use of a shut-off valve or disconnecting the incoming water line.*

*The unit must be drained completely.*

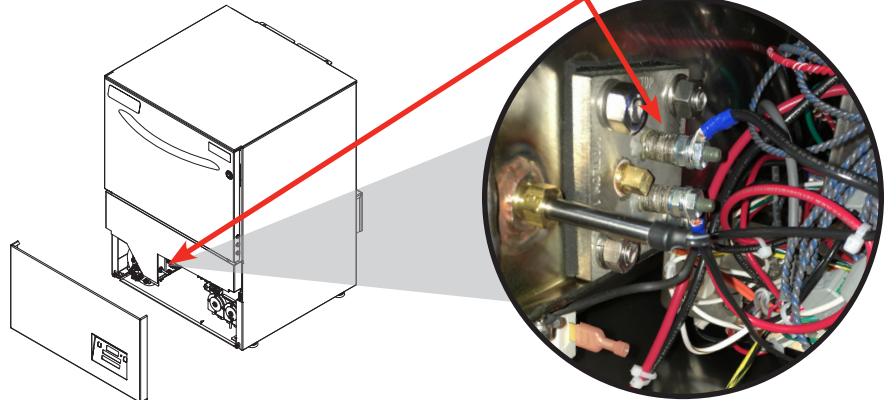
### TOOLS REQUIRED

- 1/2" Wrench
- 7/16" Wrench
- 3/8" Wrench
- Thread Tape

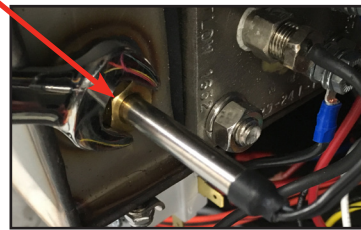


*Hold the jamnut behind the terminal while loosening to prevent damaging the heater seal.*

1. Follow the Preparation section.
2. Remove the front panel, set aside, and locate the wash heater.



3. Loosen the thermostat fitting with a 7/16" wrench.



4. Remove the thermostat probe fitting and thermostat probe and set aside.



5. Disconnect heater wires using a 3/8" wrench.



6. Remove the four heater nuts using a 1/2" wrench. Also remove the washers.



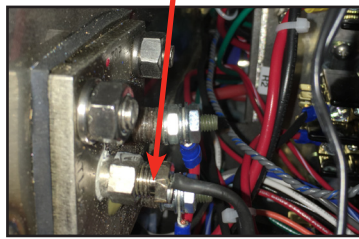
# WASH HEATER REPLACEMENT

DISHSTAR HT-E SERIES  
DELTA HT-E-SEER

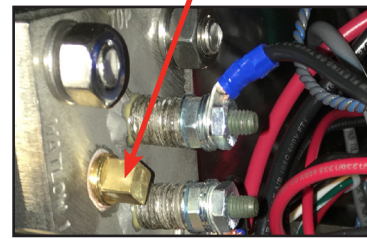
## WASH HEATER REPLACEMENT

7. Determine which hi-limit probe the unit has (different on some serial numbers).

Heater-mounted



Tank-mounted



8. If the hi-limit probe is heater-mounted, proceed to Step 9. If the hi-limit probe is tank-mounted, the probe must be pulled out before the heater can be removed:

8a. Loosen the hi-limit probe fitting on the tank with a 7/16" wrench.



8b. Slide the hi-limit probe as far as it will go to the right without coming out.

9. Pull the heater off the studs.



10. Rotate the heater to the left as far as it will go.



11. Simultaneously pull the heater out and rotate it up to begin removing it.



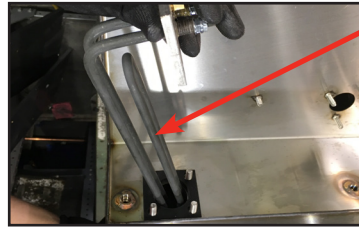
*Different probes require different steps!*



*The heater might have to be moved back-and-forth to free it from the tank. If so, move it gently to avoid damaging machine components.*

## WASH HEATER REPLACEMENT

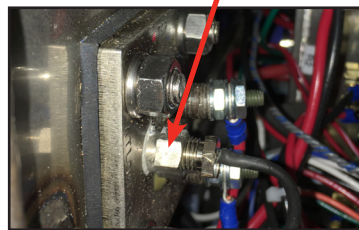
12. Once the heater is free from obstructions, finish removing it from the tank.



13. If the hi-limit probe is tank-mounted, proceed to Step 14. If the hi-limit probe is heater-mounted, the probe must be switched from the old heater to the new heater before the new heater is installed:

*Different probes require different steps!*

- 13a. Remove the hi-limit probe fitting and probe with a 7/16" wrench.



- 13b. Install the hi-limit probe fitting and probe on the new heater in the same location, using thread tape on the fitting.

14. Replace the heater gasket and position the new heater just like the old heater was when it came out of the tank.

Heater Gasket



15. Slide the heater into the tank, simultaneously pushing it in and rotating it down. If done correctly, the new heater should now be in the same position as the old heater in Step 10.



*The heater might have to be moved back-and-forth to get it in the tank. If so, move it gently to avoid damaging the heater and machine components.*

16. Rotate the heater to the right to get it back into position.



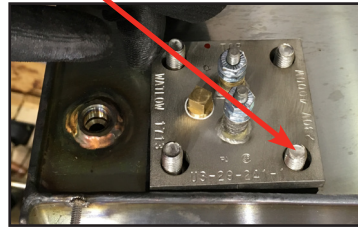


# WASH HEATER REPLACEMENT

DISHSTAR HT-E SERIES  
DELTA HT-E-SEER

## WASH HEATER REPLACEMENT

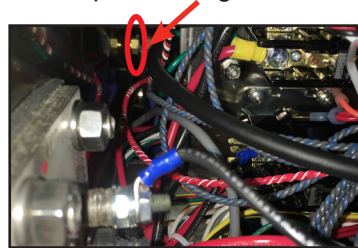
17. Push the heater onto the studs.



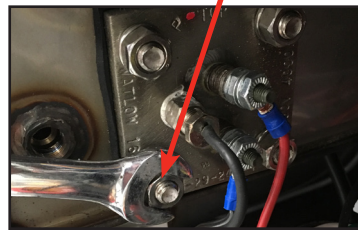
18. If the hi-limit probe is heater-mounted, proceed to Step 19. If the hi-limit probe is tank-mounted, the probe must be pushed in and tightened before completing the heater replacement:

*Different probes require different steps!*

- 18a. Slide the hi-limit probe to the left, back into place.  
18b. Tighten the hi-limit probe fitting with a 7/16" wrench.



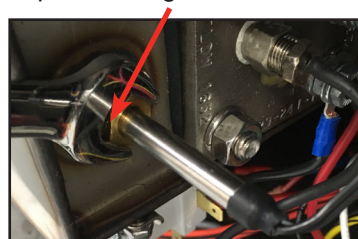
19. Replace the four washers and heater nuts using a 1/2" wrench.



20. Reconnect the heater wires using a 3/8" wrench.



21. Replace the thermostat probe fitting and thermostat probe with a 7/16" wrench.



22. Restore power and water to the unit, allowing the unit to fill normally.  
23. Allow the unit to operate approximately 10 minutes and then verify there are no leaks and that the heater is maintaining tank temperature.



*Hold the jamnut behind the terminal while tightening to prevent damaging the heater seal.*