



The manufacturer does not cover the installation of table limit switches. If installed incorrectly, the manufacturer is not responsible for any damage.

DESCRIPTION

Conveyer dishmachines automatically push racks through the machine as they are washed. This continues even after there is no more space on the dish table, which can lead to broken racks, dishes, glasses, etc. The Whisker Style Table Limit Switch avoids this damage by cutting power to the conveyer motor coil and stopping the conveyer when the table is full.

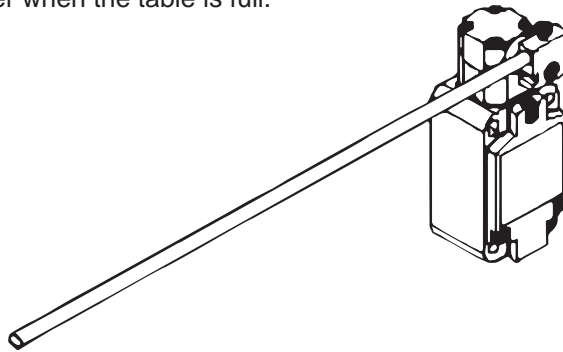
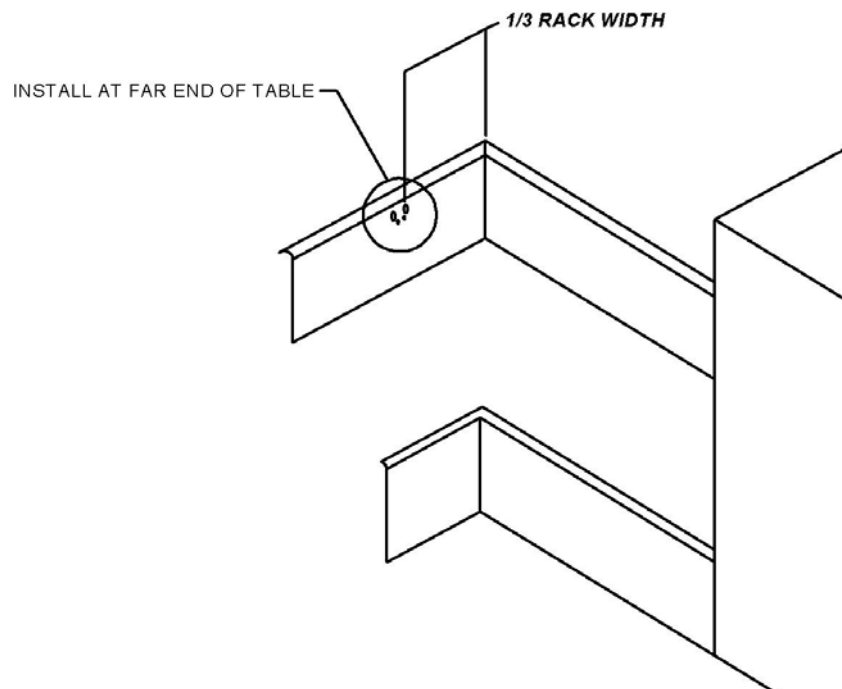


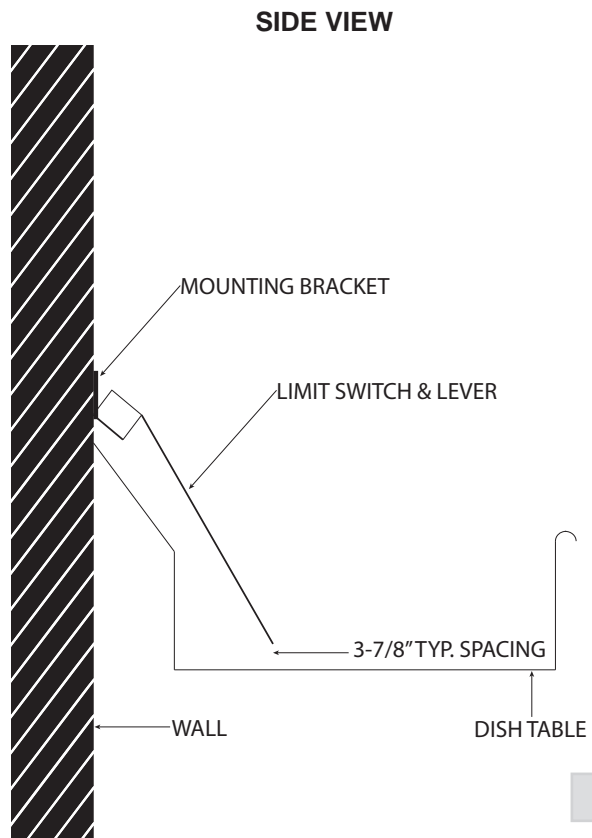
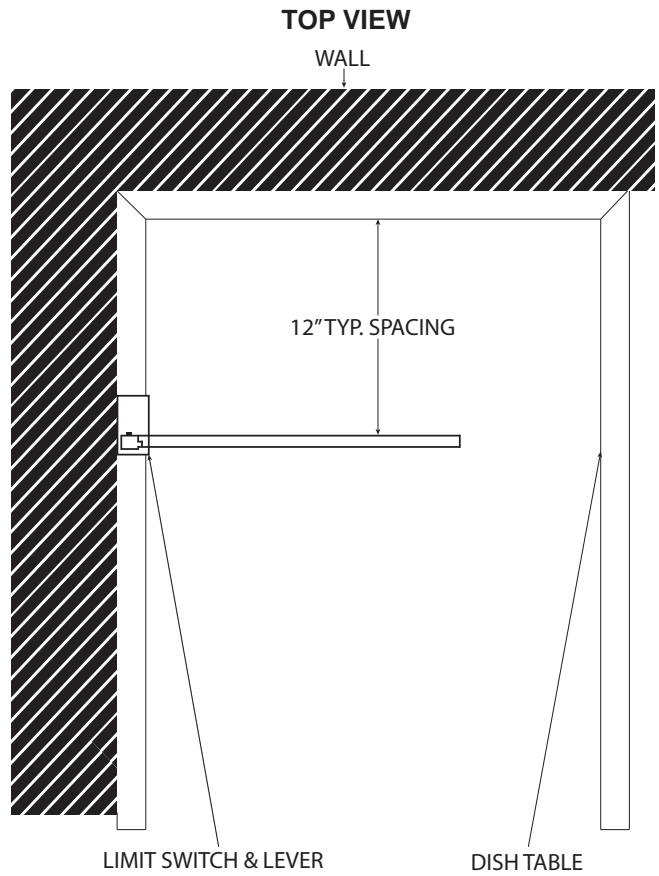
TABLE PREPARATION

The switch should be installed where it will allow the maximum number of racks on the clean end of the dish table, and where it will be tripped by all of the various types of racks used at that location. Determine the path of the racks and locate the contact point of the switch about 1/3 of a rack width from the side of the table (see drawing).



MOUNTING

The wall height of the dish table affects the location of the limit switch.



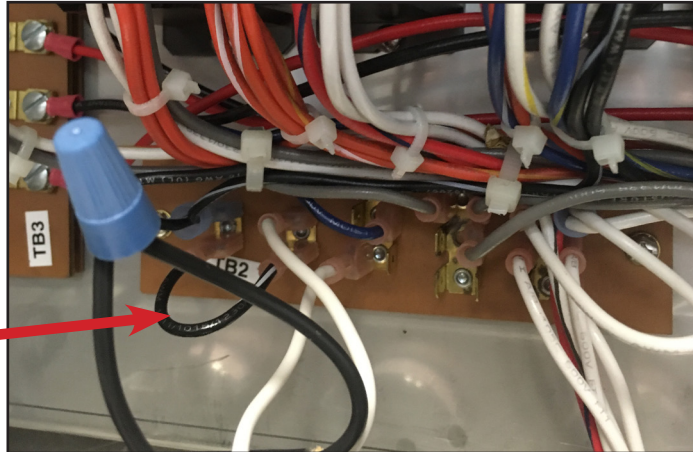
WIRING



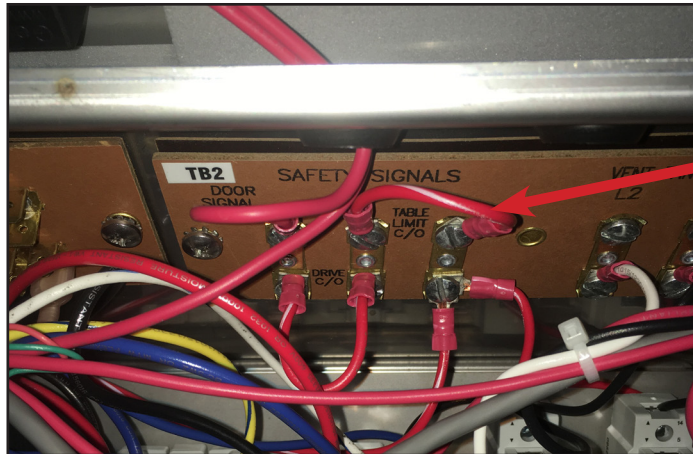
Disconnect electrical power at the breaker or disconnect switch and tag-out in accordance with procedures and codes.

On AJ/AJX and CREW, the terminal block (labeled TB2) is located in the control box of the machine. On RackStar, the terminal block (labeled Table Limit Switch Connection) is located under the hood at the top of the machine. The table limit switch wiring is located within conduit that will connect via fittings to the pre-punched holes in the back of the control box. Replace the jumper wire (white/black for AJ/AJX and RackStar and red/white for CREW) with the table limit switch wiring. See pictures below.

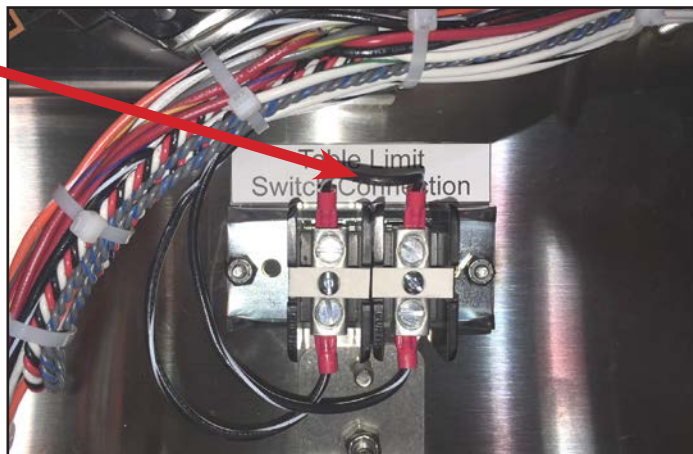
AJ/AJX



CREW



RackStar



WIRING The switch is wired common and normally-open because of the hinge design. By interrupting the line in series with the door switch(es), the dishmachine ceases to operate. Refer to the machine-specific schematics for details.



Disconnect electrical power at the breaker or disconnect switch and tag-out in accordance with procedures and codes.

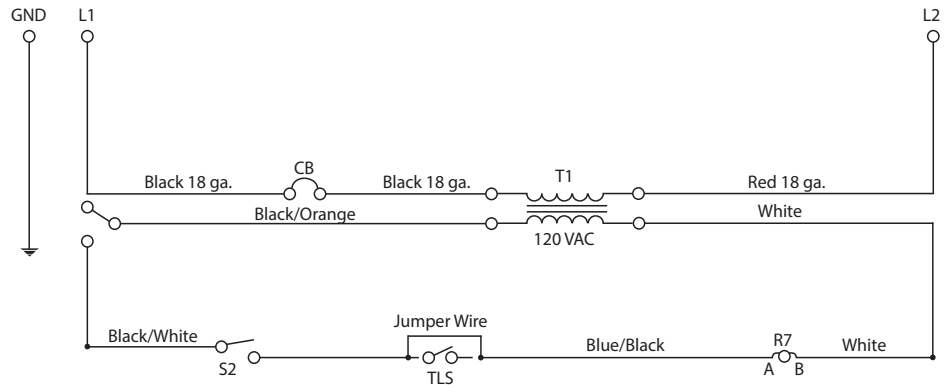
ELECTRICAL RATING

Volts	Amp
208	>1.0
230	>1.0

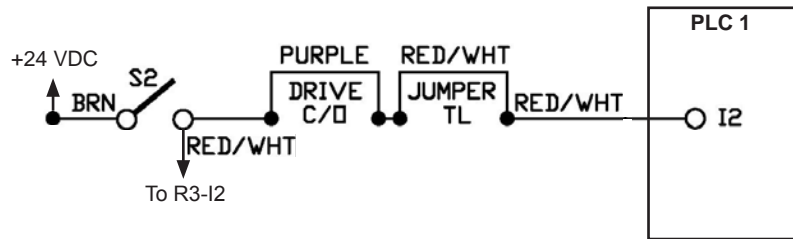
LEGEND

- CB - Control Circuit Breaker
- T1 - Control Transformer
- S1 - Power Switch
- S2 - Door Safety Switch
- R7 - Door Safety Switch Relay
- TLS - Table Limit Switch

AJ/AJX



CREW



RACKSTAR

