



Warewashing Systems

INSTALLATION, OPERATION, AND SERVICE MANUAL



AJ/AJX CONVEYOR DISHMACHINES

AJ/AJX Blower Dryer Manual • 07610-004-40-62-A

AJ/AJX BLOWER DRYER

MANUFACTURER'S WARRANTY

ONE YEAR LIMITED PARTS AND LABOR WARRANTY

ALL NEW JACKSON DISHWASHERS ARE WARRANTED TO THE ORIGINAL PURCHASER TO BE FREE FROM DEFECTS IN MATERIAL OR WORKMANSHIP, UNDER NORMAL USE AND OPERATION, FOR A PERIOD OF (1) ONE YEAR FROM DATE OF PURCHASE, BUT IN NO EVENT TO EXCEED (18) EIGHTEEN MONTHS FROM DATE OF SHIPMENT FROM THE FACTORY.

Jackson WWS agrees under this warranty to repair or replace, at its discretion, any original part which fails under normal use due to faulty material or workmanship during the warranty period, providing the equipment has been unaltered, and has been properly installed, maintained, and operated in accordance with the applicable factory instruction manual and failure is reported to an authorized service agency within the warranty period. This includes the use of factory-specified genuine replacement parts, purchased directly from a Jackson-authorized parts distributor or service agency. Use of generic replacement parts may create a hazard and void warranty certification.

The labor to repair or replace such failed part will be paid by Jackson WWS, within the continental United States, Hawaii, and Canada, during the warranty period provided a Jackson WWS authorized service agency, or those having prior authorization from the factory, performs the service. Any repair work by persons other than a Jackson WWS authorized service agency is the sole responsibility of the customer. Labor coverage is limited to regular hourly rates; overtime premiums and emergency service charges will not be paid by Jackson WWS.

Accessory components not installed by the factory carry a (1) one year parts warranty only. Accessory components such as table limit switches, pre-rinse units, etc. that are shipped with the unit and installed at the site are included. Labor to repair or replace these components is not covered by Jackson WWS.

This warranty is void if failure is a direct result from shipping, handling, fire, water, accident, misuse, acts of God, attempted repair by unauthorized persons, improper installation, if serial number has been removed or altered, or if unit is used for a purpose other than originally intended.

TRAVEL LIMITATIONS

Jackson WWS limits warranty travel time to (2) two hours and mileage to (100) one-hundred miles. Jackson WWS will not pay for travel time and mileage that exceeds this, or any additional fees—such as those for air or boat travel—without prior authorization.

WARRANTY REGISTRATION

To register your product, go to www.jacksonwws.com or call 1-888-800-5672. Failure to register your product will void the warranty.

REPLACEMENT PARTS WARRANTY

Jackson replacement parts are warranted for a period of (90) ninety days from date of installation or (180) one-hundred-eighty days from the date of shipment from the factory, whichever occurs first.

PRODUCT CHANGES AND UPDATES

Jackson WWS reserves the right to make changes in the design and specification of any equipment as engineering or necessity requires.

THIS IS THE ENTIRE AND ONLY WARRANTY OF JACKSON WWS. JACKSON'S LIABILITY ON ANY CLAIM OF ANY KIND, INCLUDING NEGLIGENCE, WITH RESPECT TO THE GOODS OR SERVICES COVERED HEREUNDER, SHALL IN NO CASE EXCEED THE PRICE OF THE GOODS OR SERVICES OR PART THEREOF WHICH GIVES RISE TO THE CLAIM.

THERE ARE NO WARRANTIES, EXPRESSED OR IMPLIED, INCLUDING FOR FITNESS OR MERCHANTABILITY, THAT ARE NOT SET FORTH HEREIN, OR THAT EXTEND BEYOND THE DURATION HEREOF. UNDER NO CIRCUMSTANCES WILL JACKSON WWS BE LIABLE FOR ANY LOSS OR DAMAGE, DIRECT OR CONSEQUENTIAL, OR FOR DAMAGES IN THE NATURE OF PENALTIES, ARISING OUT OF THE USE OR INABILITY TO USE ANY OF ITS PRODUCTS.

ITEMS NOT COVERED

THIS WARRANTY DOES NOT COVER CLEANING OR DELIMING OF THE UNIT OR ANY COMPONENT SUCH AS, BUT NOT LIMITED TO, WASH ARMS, RINSE ARMS, OR STRAINERS AT ANYTIME. NOR DOES IT COVER ADJUSTMENTS SUCH AS, BUT NOT LIMITED TO, TIMER CAMS, THERMOSTATS, OR DOORS BEYOND (30) THIRTY DAYS FROM THE DATE OF INSTALLATION. IN ADDITION, THE WARRANTY WILL ONLY COVER REPLACEMENT WEAR ITEMS SUCH AS CURTAINS, DRAIN BALLS, DOOR GUIDES, OR GASKETS DURING THE FIRST (30) THIRTY DAYS AFTER INSTALLATION. ALSO, NOT COVERED ARE CONDITIONS CAUSED BY THE USE OF INCORRECT (NON-COMMERICAL) GRADE DETERGENTS, INCORRECT WATER TEMPERATURE OR PRESSURE, OR HARD WATER CONDITIONS.

REVISION HISTORY

Revision Letter	Revision Date	Made by	Applicable ECNs	Details
A	1-20-17	JH	N/A	Initial release of the manual.



AJ/AJX Blower Dryer

Model: _____

Serial No.: _____

Installation Date: _____

Service Rep. Name: _____

Phone Number: _____

The manufacturer provides technical support for all of the dishmachines detailed in this manual. We strongly recommend that you refer to this manual before making a call to our technical support staff. Please have this manual with you when you call so that our staff can refer you, if necessary, to the proper page. Technical support is not available on holidays.

Contact technical support toll free at 1-888-800-5672.

Technical support is available for service personnel only.

TABLE OF CONTENTS

GUIDES

Symbols	1
Abbreviations & Acronyms	1

SPECIFICATIONS

Dimensions	2
Electrical Requirements	3
Features	4

INSTALLATION

Installation Instructions	6
---------------------------------	---

PARTS

Electric Blower, 208-230 V, 60 Hz, 3-Phase, L-R	9
Electric Blower, 208-230 V, 60 Hz, 3-Phase, R-L	12
Steam Blower, 208-230 V, 60 Hz, 3-Phase, L-R	15
Steam Blower, 208-230 V, 60 Hz, 3-Phase, R-L	18

SCHEMATICS

Electric Blower	21
Steam Blower	22

SYMBOLS



- risk of injury to personnel.



- risk of damage to equipment.



- risk of electrical shock.



- caustic chemicals.



- reference data plate.



- lockout electrical power.

NOTICE - important note.

ABBREVIATIONS & ACRONYMS

ANSI - American National Standards Institute

CFM - Cubic Feet per Minute

GHT - Garden Hose Thread

GPH - Gallons per Hour

GPM - Gallons per Minute

GPG - Grains per Gallon

HP - Horse Power

Hz - Hertz

ID - Inside Diameter

kW - Kilowatts

LPM - Liters per Minute

NFPA - National Fire Protection Association

NPT - National Pipe Thread

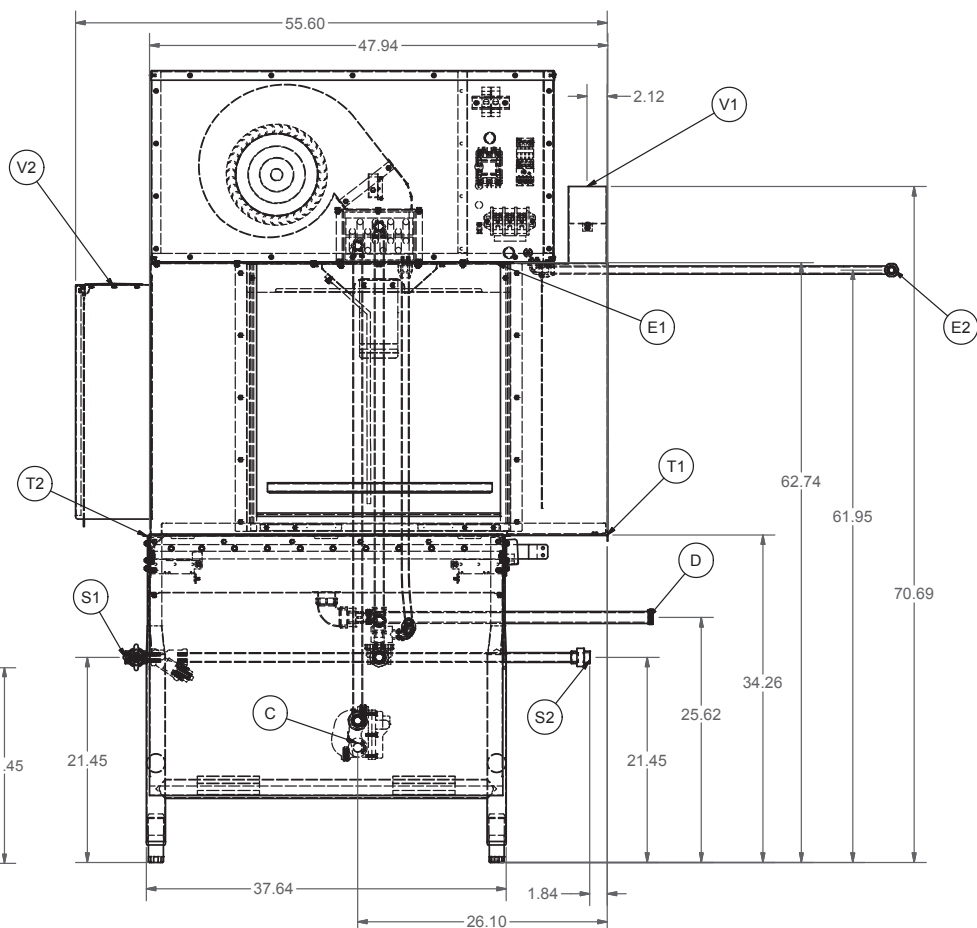
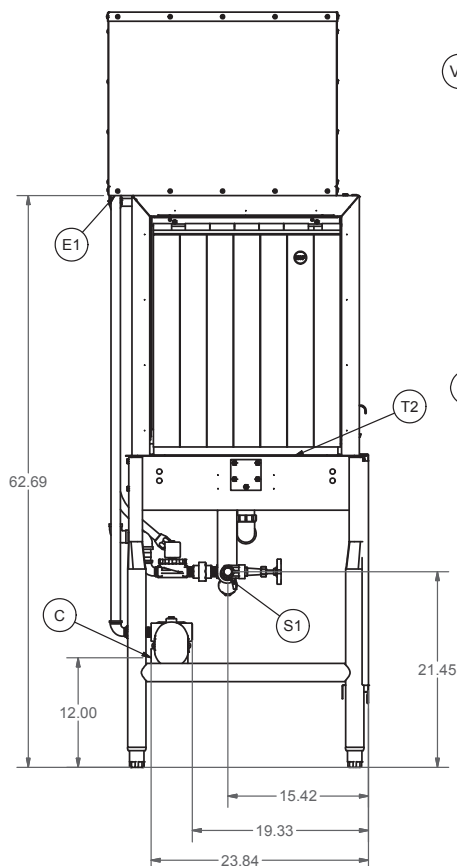
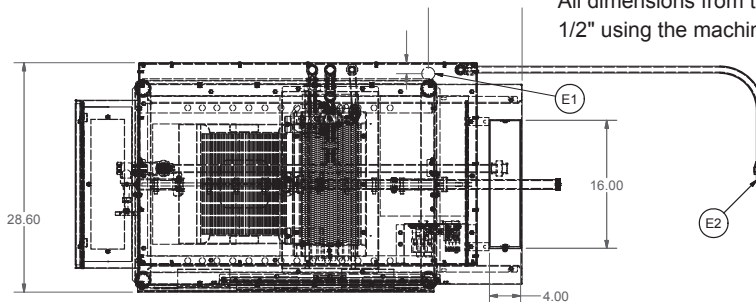
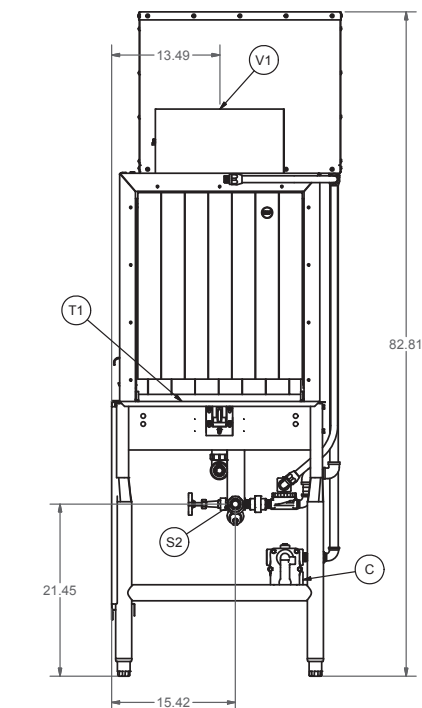
PSI - Pounds per Square Inch

V - Volts

Steam Blower, R-L Shown

- E1 : MAIN ELECTRICAL CONNECTION TO BLOWER
- E2 : CONTROL CONNECTION TO MAIN UNIT
- S1 : MAIN STEAM INLET TO MAIN UNIT & BLOWER
- S2 : STEAM CONNECTION TO MAIN UNIT
- C : CONDENSATE FROM BLOWER
- D : TUB DRAIN CONNECTION TO MAIN UNIT
- V1 : VENTILATION DUCT CONNECTION
- V2 : COVER FOR OUTLET VENT COWL
- T1 : BLOWER "TABLE" CONNECTION TO MAIN UNIT
- T2 : CONNECTION TO OUTLET TABLE

All dimensions from the floor can be increased 1/2" using the machine's adjustable feet.



NOTICE



All electrical ratings provided in this manual are for reference only. Always refer to the machine data plate to get exact electrical information for this machine. **All electrical work performed on machines should be done in accordance with applicable local, state, territorial, and national codes.** Work should only be performed by qualified electricians and authorized service agents.

Note that all electrical wiring used in this series of machines must be rated, at a minimum, for 212 °F (100 °C), and that only copper conductors must be used.

Where applicable, heating element amperage draws have been adjusted for the assumed input voltage. The manufacturer assumes incoming voltages will be either 115, 208, 230, or 460 Volts. Some heating elements used in the machines can be rated for other voltages, such as 240 Volts and 480 Volts. Always verify the amperage draw of the machine in operation when sizing circuit protection.

Available Electrical Characteristics:

- 208-230 V, 60 Hz, Three-phase

Electrical Characteristics

VOLTS	Electric	Steam
PHASE	3	3
FREQ	60	60
MOTOR LOAD	7.2 A	7.2 A
HEATER LOAD	25.0 A	N/A
TOTAL LOAD	32.2 A	7.2 A

DESCRIPTION This blower dryer is an accessory device that is bolted to a conveyor-style dishmachine to help dry dishware. It uses a positive circulation of heated air which completely surrounds the ware. With the high-velocity air movement, it will also help dry plastic ware and trays.

DESIGN The unit is provided with a straight unloading table only. It will include a hooded chamber covering the entire 4' table length which provides an adequate drying area.

A heavy-duty, squirrel-cage-type industrial fan draws recirculated blower chamber air through a heated device of either electric or steam. The heated air is directed downward to the drying area through dual nozzles, which extend the full width of the conveyor.

A condensation-tight ventilation system is required to remove the humidity-laden air and maintain desirable working conditions in the dishroom.

CONSTRUCTION The chamber is constructed of durable stainless steel and bolted to the conveyor-style dishmachine. An inspection door provides access to the drying section. A vent with a locking-type control damper is included in the hood. The vent stack is located at the entrance of the drying chamber and is connected to the dishroom exhaust ducting.

Removable stainless steel panels enclose the entire external component assembly, consisting of heating devices (electric or steam), motor, and blower.

The tank portion is constructed of stainless steel with legs and lower cross-members of 2" diameter stainless steel tubing and adjustable feet.

Conveyor mechanism is a center-mounted, heavy-duty, stainless steel pawl bar with stainless steel cast, counter-weighted, wide-surface pawls. The pawl bar is driven from the conveyor drive motor.

**ELECTRIC HEAT
EXCHANGER**

The heater is 9 kW with thermostatic control and separate over-temperature protection.

**STEAM HEAT
EXCHANGER**

A separate 3/4" NPT connection is required for a steam-heated blower dryer. Consumption will be 35 lbm/hour. Steam flow pressure to be 15 to 30 psi. If a steam pressure regulator is required it is to be provided by Installing Contractor.

BLOWER

The blower is a squirrel-cage-type industrial fan, with optimal motor cooling and a compact construction achieved through integrating the voltage controllable external rotor motor into the impeller.

MOTOR CONTROL

Magnetic-type starter with thermal overload protection pre-wired to the motor. Operation is controlled by the dishmachine control circuitry so the blower dryer only operates when the dishmachine is running.

INSPECTING

Do not throw away the packaging if damage is evident!

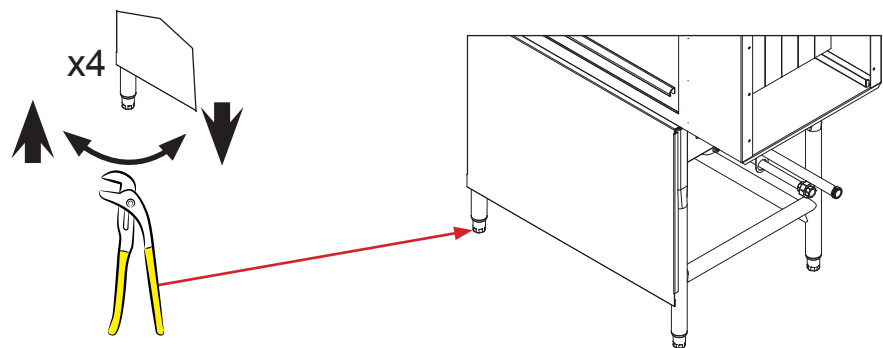
Before installing the unit, check the packaging and machine for damage. If the packaging is damaged, the machine might also be damaged. If there is damage to both the packaging and machine, do not throw away the packaging. The dishmachine has been inspected and packed at the factory and is expected to arrive to you in new, undamaged condition. However, rough handling by carriers or others might result in damage to the unit while in transit. If so, do not return the unit to the manufacturer; instead, contact the carrier and ask them to send a representative to the site to inspect the damage and complete an inspection report. You must contact the carrier within 48 hours of receiving the machine, as well as the dealer that sold you the unit.

UNPACKING

While removing the machine from the packaging, ensure that there are no missing parts. If an item is missing, contact the manufacturer immediately.

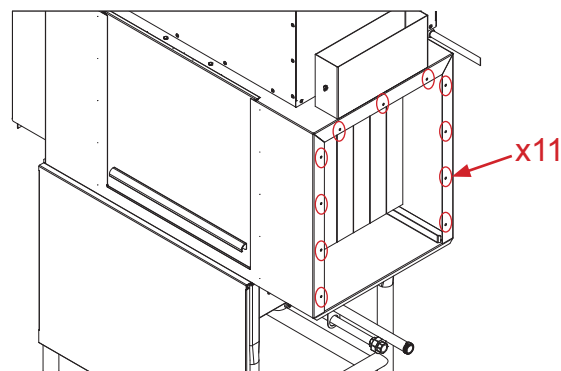
LEVELING

Place the lip of the blower dryer over the lip on the dishmachine. Then level the unit to prevent damage to the machine during operation and to ensure the best results. The unit comes with four adjustable bullet feet, which can be turned using a pair of channel locks (or by hand if the unit can be raised safely). Ensure that the unit is level from side-to-side and front-to-back and with the dishmachine before making any connections.



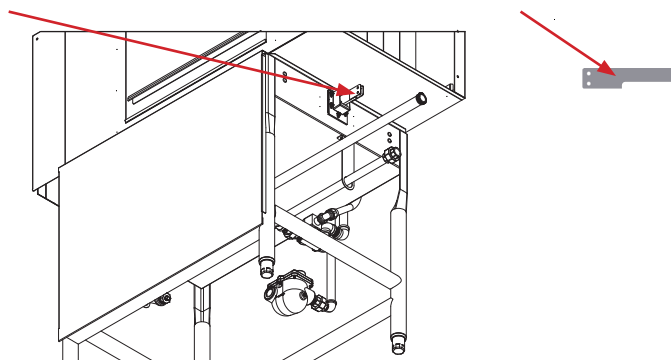
CONNECTING TO DISHMACHINE

1. Use the bolts provided with the unit to connect it to the dishmachine.

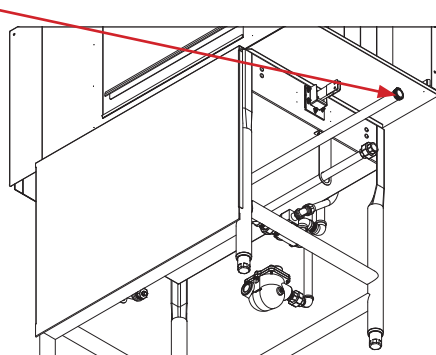


CONNECTING TO DISHMACHINE

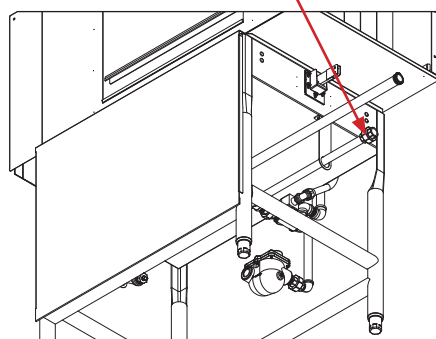
2. Connect the linkage on the blower dryer to the dishmachine key.



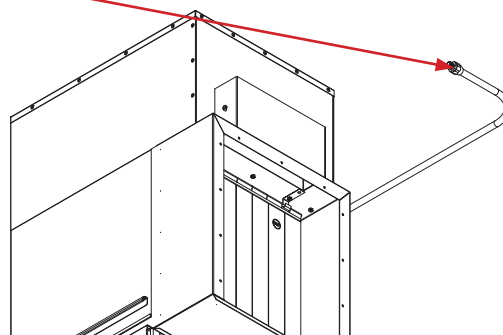
3. Connect the drain line to the dishmachine.



4. If a steam blower dryer, connect the plumbing to the dishmachine and put the solenoid valve top on.



5. Connect wiring to the back of the control box on the dishmachine by joining like colors.



MAIN ELECTRICAL CONNECTION



Disconnect electrical power at the breaker or disconnect switch and tag-out in accordance with procedures and codes.



Electrical and grounding connections must comply with the applicable portions of the National Electrical Code ANSI/NFPA 70 (latest edition) and/or other electrical codes.

Disconnect electrical power supplies and place a tag at the disconnect switch to indicate that you are working on the circuit.

Refer to the data plate for machine operating requirements, machine voltage, total amperage load, and serial number.

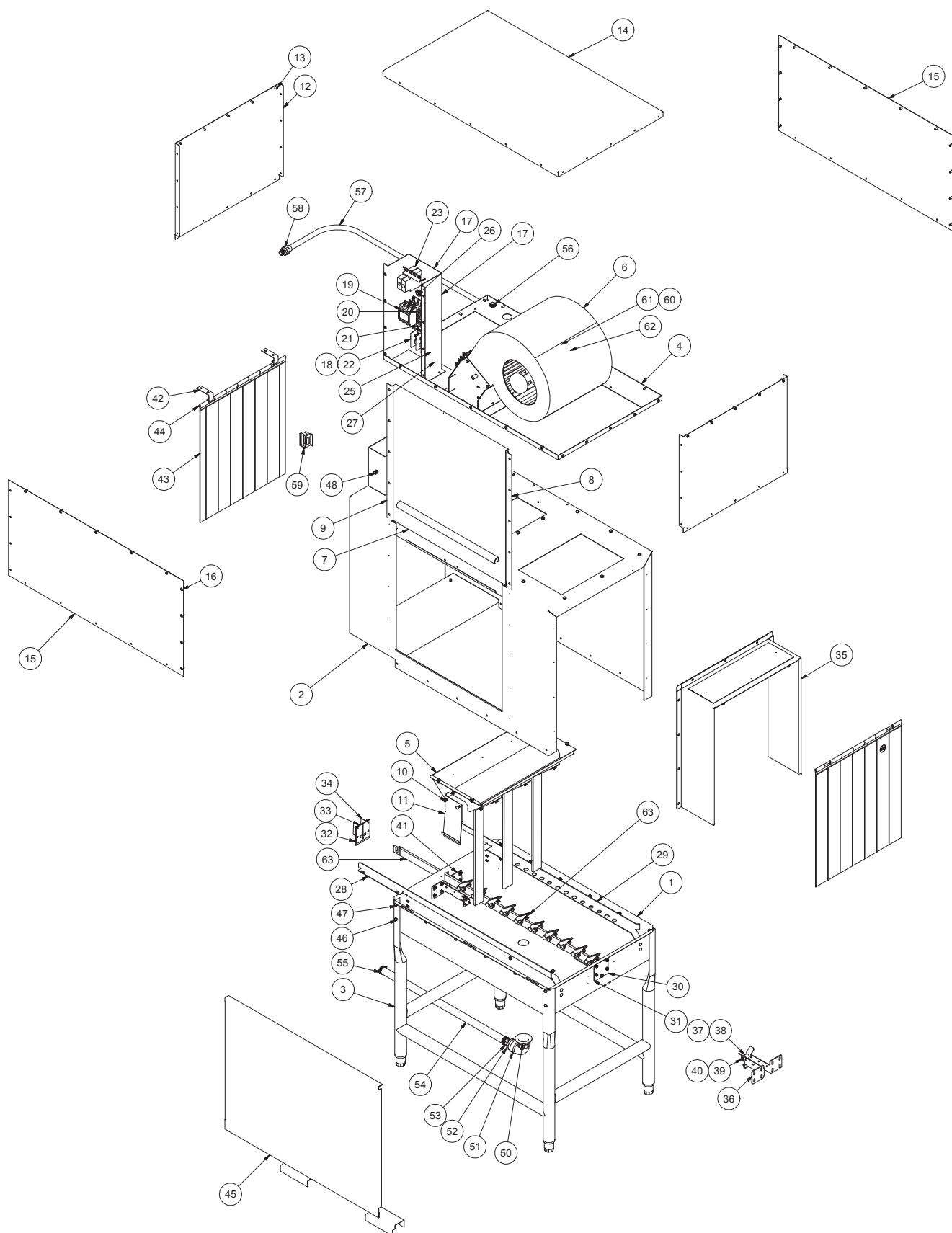
The main power terminal blocks are located at the top of the machine. You will have to remove a panel to access these connections. Route incoming power lines within conduit that will connect via fittings to the pre-punched holes. Install power and ground wires to lugs as indicated by the appropriate decals. Use copper conductors only. Use of an anti-oxidation agent is permissible on the power connections. Tighten all connections.

Verify the incoming voltage matches the voltage indicated on the decal next to the incoming power pre-punched hole.

NOTICE **NOTE:** It is recommended that “DE-OX” or similar anti-oxidation agent be used on all power connections.

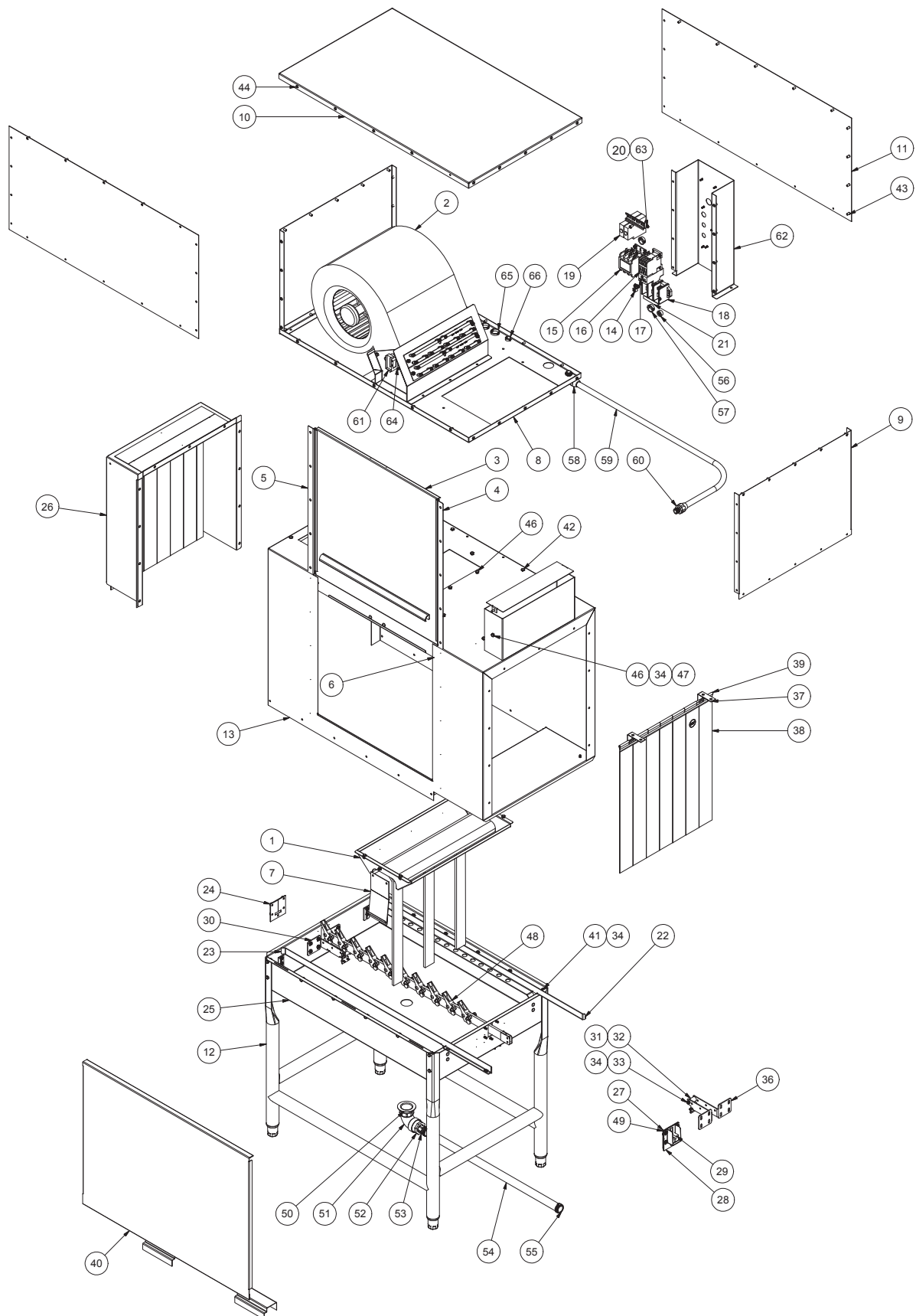
CONFIRM FUNCTION

Reconnect all power supplies to the dishmachine and the blower dryer. Run a cycle without dishware to confirm proper function of the two units together and proper function of the blower portion of the blower dryer.



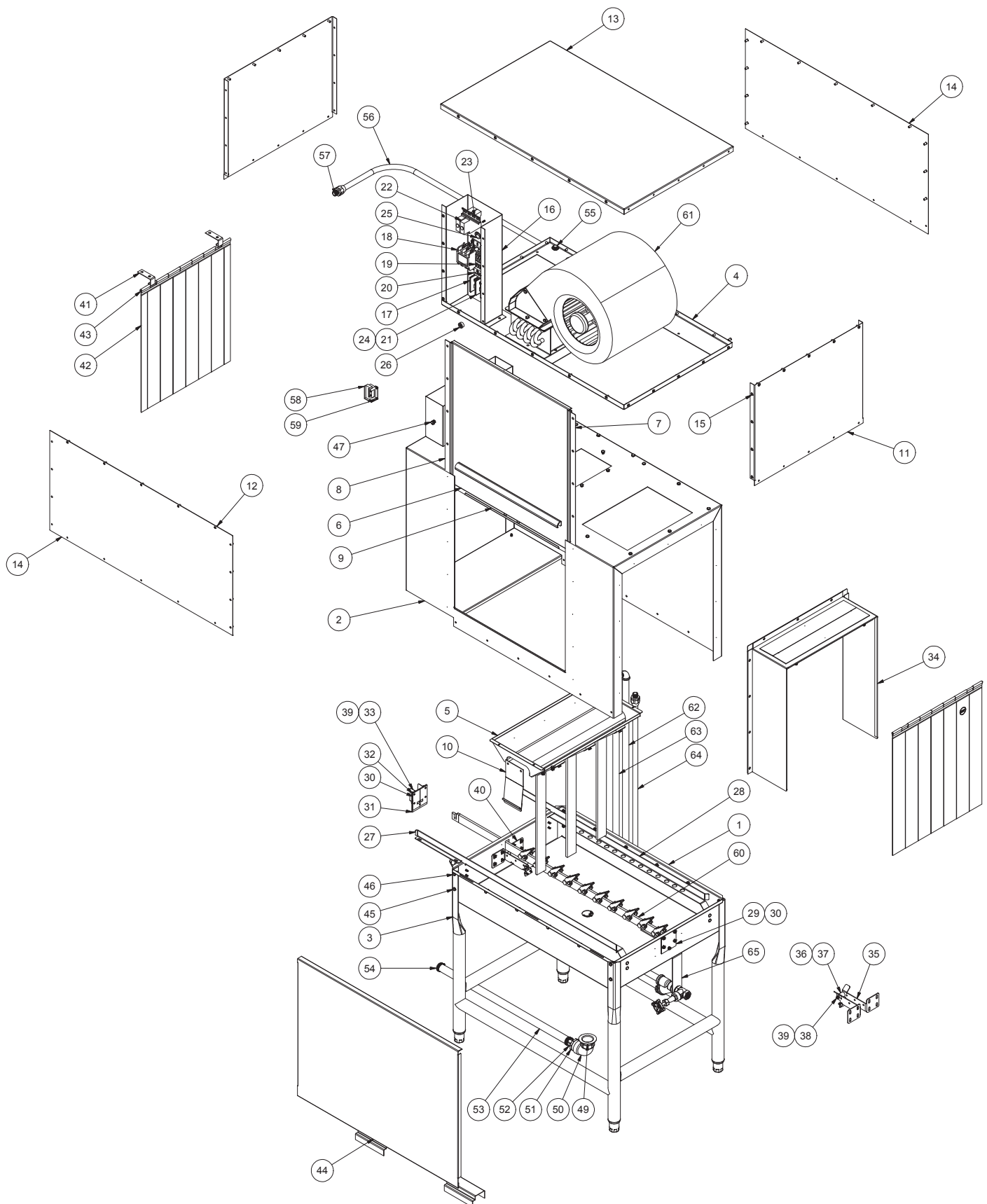
ITEM	QTY	DESCRIPTION	PART NUMBER
1	1	Tub, Blower Weldment	05700-003-33-70
2	1	Hood, Blower Weldment	05700-003-34-30
3	1	Frame, Blower Weldment	05700-003-33-79
4	1	Base, Blower L-R	05700-003-34-26
5	1	Box, Blower Air Knives	05700-003-32-98
6	1	Blower, 208-230 V, 60 Hz, 3-Phase	05700-003-32-88
7	1	Door, Blower	05700-003-33-81
8	1	Guide, Right Door Weldment	05700-031-76-44
9	1	Guide, Left Door	05700-002-32-51
10	1	Support, Door Hood w/Studs	05700-031-84-13
11	1	Door Catch, 44 Weldment	05700-031-84-80
12	2	Cover, Housing Sides	05700-003-33-67
13	56	Insert, 10-32	05340-111-47-27
14	1	Cover, Housing Top	05700-003-33-68
15	2	Cover, Housing Front and Back	05700-003-33-69
16	56	Screw, 10-32 x 3/8"	05305-173-12-00
17	1	Box, Control Weldment	05700-003-34-12
18	1	Ground Lug	05940-200-76-00
19	1	Contactor, 3-Pole, 50 A	05945-002-24-70
20	1	Contactor, Drive Motor	05945-111-68-38
21	1	Overload 2.5-4 RT1K Prewash Motor	05945-111-68-41
22	1	Terminal Block, 3-Pole	05940-011-48-27
23	2	Timer	05945-004-22-78
24	1	Din Rail 3 9/10" Long	05700-002-16-00
25	1	Decal, L1 L2 L3	09905-101-12-66
26	2	Snap Bushing, Heyco 1 1/8"	05975-210-08-00
27	1	Grommet, Heyco Split	05975-200-40-00
28	1	Rack Rail, Left	05700-003-33-84
29	1	Rack Rail, Right	05700-003-33-85
30	1	Plate, Pawl Bar	05700-011-68-77
31	2	Gasket, Drive Gutter	05330-011-68-55
32	1	Block, Guide Bottom	05700-011-69-50
33	1	Plate, Gutter	05700-003-34-08
34	1	Gutter, Pawl Bar Weldment	05700-021-66-86

ITEM	QTY	DESCRIPTION	PART NUMBER
35	1	Vent Cowl Assembly	05700-041-86-93
36	1	Bracket, Pawl Bar Roller w/Studs	05700-031-84-68
37	2	Shaft, Roller	05700-011-68-14
38	2	Roller, Bracket Rod	05700-011-68-16
39	2	Screw, 1/4-20 x 1 3/4 Hex Head	05305-274-10-00
40	102	Locknut, 1/4-20 Hex w/Nylon Insert	05310-374-01-00
41	1	Brkt, Pawl Bar Roller No Tabs	05700-031-92-36
42	2	Hook, Middle Curtain	05700-011-72-65
43	2	Curtain X-Long, 20 1/2" W x 24 1/2" L	08415-002-47-37
44	2	Rod, Curtain	05700-021-73-43
45	1	Panel, Front Dress Weldment	05700-003-34-03
46	24	Bolt, 1/4-20 x 1/2" Long	05305-274-02-00
47	4	Bolt, Hex Head 1/4-20 x 3/4"	05305-274-04-00
48	13	Screw, 1/4-20 x 5/8" SS Hex Head	05305-274-24-00
49	1	Baffle, Vent Cowl Weldment	05700-002-11-47
50	1	Drain, Modified	05700-011-79-45
51	1	Fitting, 90 1 1/2" FNPT x Slip PVC Sink	04730-003-31-52
52	1	Bushing, 1 1/2" Spigot x 1" FNPT PVC	04730-003-31-53
53	1	Fitting, 1" Barb x 1" NPT PP Straight	04730-003-31-51
54	1	Drain Hose	05700-003-34-10
55	2	Clamp, Reg Range 13/16 - 1 1/2" #16	04730-719-06-09
56	1	Fitting, Conduit, 90-degree, 1/2", Plastic	05975-011-45-14
57	1	Conduit, Blower	05700-003-34-11
58	1	Fitting, 1/2" Plastic	05975-011-45-13
59	1	RinseThermostat, 175-195 °F	05930-003-06-48
60	2	Nut, Lock 6-32 Hex w/Nylon Insert	05310-373-03-00
61	2	Plug, Heyco DP 1375	05975-002-88-11
62	1	Plug, Heyco 2700 G-875	05975-011-47-81
63	1	Pawl Bar, 48" Blower Dryer	05700-002-92-11
64	1	Heater, 4.5 kW 208 V (Not Shown)	04540-002-74-29



ITEM	QTY	DESCRIPTION	PART NUMBER
1	1	Box, Blower Air Knives	05700-003-32-98
2	1	Blower, 208-230 V, 60 Hz, 3-Phase	05700-003-32-88
3	1	Door, Blower	05700-003-33-81
4	1	Guide, Right Door Weldment	05700-031-76-44
5	1	Guide, Left Door	05700-002-32-51
6	1	Support, Door Hood w/Studs	05700-031-84-13
7	1	Door Catch, 44 Weldment	05700-031-84-80
8	1	Base, Blower R-L	05700-003-33-56
9	2	Cover, Housing Sides	05700-003-33-67
10	1	Cover, Housing Top	05700-003-33-68
11	2	Cover, Housing Front and Back	05700-003-33-69
12	1	Frame, Blower Weldment	05700-003-33-70
13	1	Hood, Blower Weldment	05700-003-33-72
14	1	Ground Lug	05940-200-76-00
15	1	Contactor, 3-Pole, 50 A	05945-002-24-70
16	1	Contactor, Drive Motor	05945-111-68-38
17	1	Overload 2.5-4 RT1K Prewash Motor	05945-111-68-41
18	1	Terminal Block, 3-Pole	05940-011-48-27
19	2	Timer	05945-004-22-78
20	1	Din Rail 3 9/10" Long	05700-002-16-00
21	1	Decal, L1 L2 L3	09905-101-12-66
22	1	Rack Rail, Left	05700-003-33-84
23	1	Rack Rail, Right	05700-003-33-85
24	1	Plate, Pawl Bar	05700-011-68-77
25	1	Tub, Blower Weldment	05700-003-33-70
26	1	Vent Cowl Assembly	05700-041-86-93
27	1	Gasket, Drive Gutter	05330-011-68-55
28	1	Gutter, Pawl Bar Weldment	05700-021-66-86
29	1	Block, Guide Bottom	05700-011-69-50
30	1	Bracket, Pawl Bar Roller w/Studs	05700-031-84-68
31	2	Shaft, Roller	05700-011-68-14
32	2	Roller, Bracket Rod	05700-011-68-16
33	2	Screw, 1/4-20 x 1 3/4 Hex Head	05305-274-10-00
34	102	Locknut, 1/4-20 Hex w/Nylon Insert	05310-374-01-00

ITEM	QTY	DESCRIPTION	PART NUMBER
35		Item intentionally left blank.	
36	1	Brkt, Pawl Bar Roller No Tabs	05700-031-92-36
37	2	Hook, Middle Curtain	05700-011-72-65
38	2	Curtain X-Long, 20 1/2" W x 24 1/2" L	08415-002-47-37
39	2	Rod, Curtain	05700-021-73-43
40	1	Panel, Front Dress Weldment	05700-003-34-03
41	4	Bolt, Hex Head 1/4-20 x 3/4"	05305-274-04-00
42	24	Bolt, 1/4-20 x 1/2" Long	05305-274-02-00
43	56	Insert, 10-32	05340-111-47-27
44	56	Screw, 10-32 x 3/8"	05305-173-12-00
45	1	Baffle, Vent Cowl Weldment	05700-002-11-47
46	13	Screw, 1/4-20 x 5/8" SS Hex Head	05305-274-24-00
47	1	Nut, Hex 1/4-20	05310-274-01-00
48	1	Pawl Bar, 48" Blower Dryer	05700-002-92-11
49	1	Plate, Gutter	05700-003-34-08
50	1	Drain, Modified	05700-011-79-45
51	1	Fitting, 90 1 1/2" FNPT x Slip PVC Sink	04730-003-31-52
52	1	Bushing, 1 1/2" Spigot x 1" FNPT PVC	04730-003-31-53
53	1	Fitting, 1" Barb x 1" NPT PP Straight	04730-003-31-51
54	1	Drain Hose	05700-003-34-10
55	2	Clamp, Reg Range 13/16 - 1 1/2" #16	04730-719-06-09
56	1	Grommet, Heyco Split	05975-200-40-00
57	2	Snap Bushing, Heyco 1 1/8"	05975-210-08-00
58	1	Fitting, Conduit, 90-degree, 1/2", Plastic	05975-011-45-14
59	1	Conduit, Blower	05700-003-34-11
60	1	Fitting, 1/2" Plastic	05975-011-45-13
61	1	RinseThermostat, 175-195 °F	05930-003-06-48
62	1	Box, Control Weldment	05700-003-34-12
63	9	Nut, Lock 10-24 ss Hex w/Nylon Insert	05310-373-01-00
64	2	Nut, Lock 6-32 Hex w/Nylon Insert	05310-373-03-00
65	2	Plug, Heyco DP 1375	05975-002-88-11
66	1	Plug, Heyco 2700 G-875	05975-011-47-81
67	1	Heater, 4.5 kW 208 V (Not Shown)	04540-002-74-29

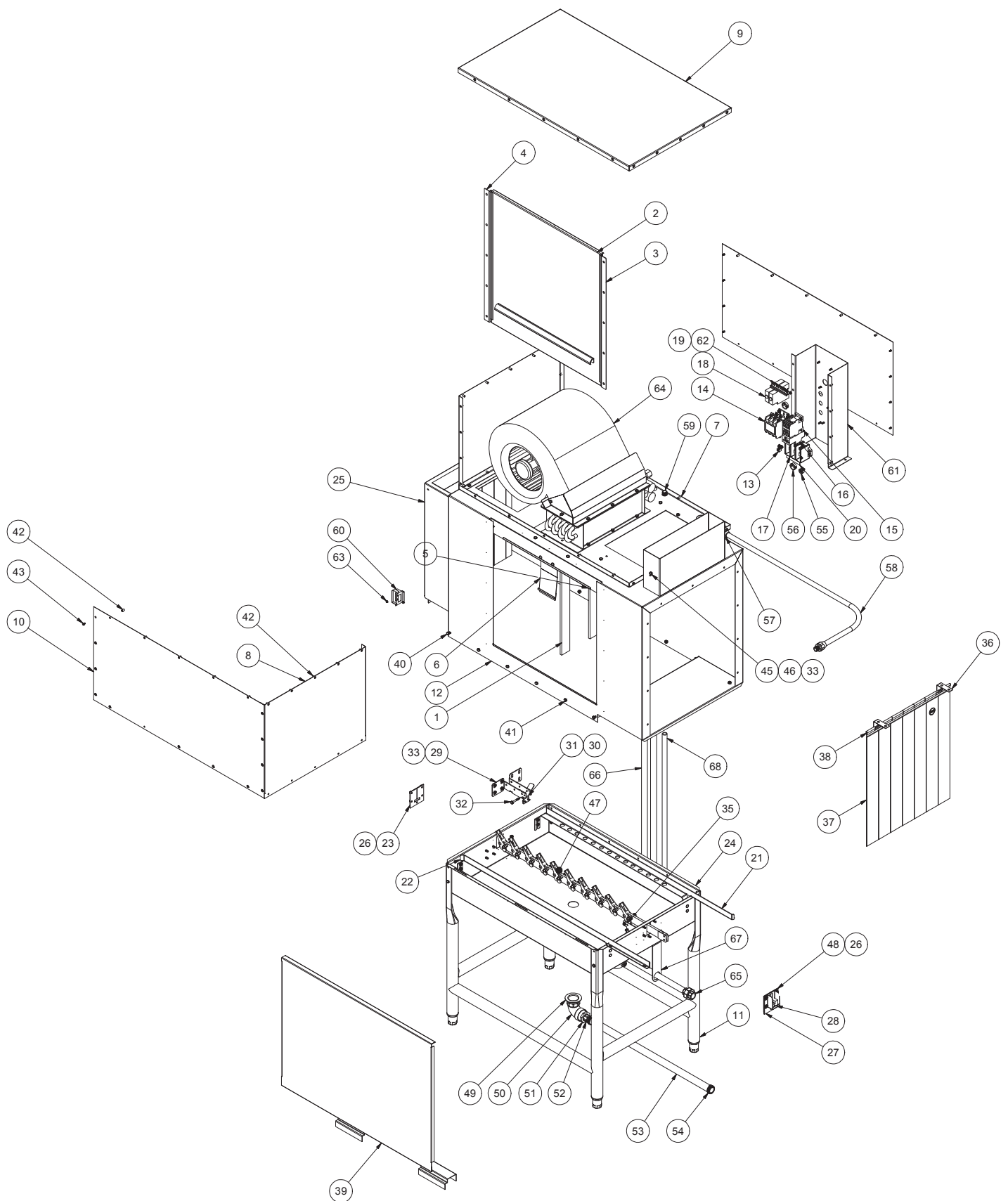


PARTS

STEAM BLOWER, 208-230 V, 60 HZ, 3-PH, L-R

ITEM	QTY	DESCRIPTION	PART NUMBER
1	1	Tub, Blower Weldment	05700-003-33-70
2	1	Hood, Blower Weldment	05700-003-34-30
3	1	Frame, Blower Weldment	05700-003-33-79
4	1	Base, Blower L-R	05700-003-34-26
5	1	Box, Blower Air Knives	05700-003-32-98
6	1	Door, Blower	05700-003-33-81
7	1	Guide, Right Door Weldment	05700-031-76-44
8	1	Guide, Left Door	05700-002-32-51
9	1	Support, Door Hood w/Studs	05700-031-84-13
10	1	Door Catch, 44 Weldment	05700-031-84-80
11	2	Cover, Housing Sides	05700-003-33-67
12	56	Insert, 10-32	05340-111-47-27
13	1	Cover, Housing Top	05700-003-33-68
14	2	Cover, Housing Front and Back	05700-003-33-69
15	56	Screw, 10-32 x 3/8"	05305-173-12-00
16	1	Box, Control Weldment	05700-003-34-12
17	1	Ground Lug	05940-200-76-00
18	1	Contactor, 3-Pole, 50 A	05945-002-24-70
19	1	Contactor, Drive Motor	05945-111-68-38
20	1	Overload 2.5-4 RT1K Prewash Motor	05945-111-68-41
21	1	Terminal Block, 3-Pole	05940-011-48-27
22	2	Timer	05945-004-22-78
23	1	Din Rail 3 9/10" Long	05700-002-16-00
24	1	Decal, L1 L2 L3	09905-101-12-66
25	2	Snap Bushing, Heyco 1 1/8"	05975-210-08-00
26	1	Grommet, Heyco Split	05975-200-40-00
27	1	Rack Rail, Left	05700-003-33-84
28	1	Rack Rail, Right	05700-003-33-85
29	1	Plate, Pawl Bar	05700-011-68-77
30	2	Gasket, Drive Gutter	05330-011-68-55
31	1	Block, Guide Bottom	05700-011-69-50
32	1	Plate, Gutter	05700-003-34-08
33	1	Gutter, Pawl Bar Weldment	05700-021-66-86

ITEM	QTY	DESCRIPTION	PART NUMBER
34	1	Vent Cowl Assembly	05700-041-86-93
35	1	Bracket, Pawl Bar Roller w/Studs	05700-031-84-68
36	2	Shaft, Roller	05700-011-68-14
37	2	Roller, Bracket Rod	05700-011-68-16
38	2	Screw, 1/4-20 x 1 3/4 Hex Head	05305-274-10-00
39	106	Locknut, 1/4-20 Hex w/Nylon Insert	05310-374-01-00
40	1	Brkt, Pawl Bar Roller No Tabs	05700-031-92-36
41	2	Hook, Middle Curtain	05700-011-72-65
42	2	Curtain X-Long, 20 1/2" W x 24 1/2" L	08415-002-47-37
43	2	Rod, Curtain	05700-021-73-43
44	1	Panel, Front Dress Weldment	05700-003-34-03
45	24	Bolt, 1/4-20 x 1/2" Long	05305-274-02-00
46	4	Bolt, Hex Head 1/4-20 x 3/4"	05305-274-04-00
47	13	Screw, 1/4-20 x 5/8" SS Hex Head	05305-274-24-00
48	1	Baffle, Vent Cowl Weldment	05700-002-11-47
49	1	Drain, Modified	05700-011-79-45
50	1	Fitting, 90 1 1/2" FNPT x Slip PVC Sink	04730-003-31-52
51	1	Bushing, 1 1/2" Spigot x 1" FNPT PVC	04730-003-31-53
52	1	Fitting, 1" Barb x 1" NPT PP Straight	04730-003-31-51
53	1	Drain Hose	05700-003-34-10
54	2	Clamp, Reg Range 13/16 - 1 1/2" #16	04730-719-06-09
55	1	Fitting, Conduit, 90-degree, 1/2", Plastic	05975-011-45-14
56	1	Conduit, Blower	05700-003-34-11
57	1	Fitting, 1/2" Plastic	05975-011-45-13
58	1	RinseThermostat, 175-195 °F	05930-003-06-48
59	2	Nut, Lock 6-32 Hex w/Nylon Insert	05310-373-03-00
60	1	Pawl Bar, 48" Blower Dryer	05700-002-92-11
61	1	Blower Assembly	05700-003-34-13
62	1	Input, Piping Assembly	05700-002-93-94
63	1	Outlet, Piping Assembly	05700-002-03-95
64	1	Blower Conduit	05700-003-34-17
65	2	Plumbing Bracket	05700-003-34-15
66	1	Heater, Steam Coil (Not Shown)	04420-002-76-68



PARTS

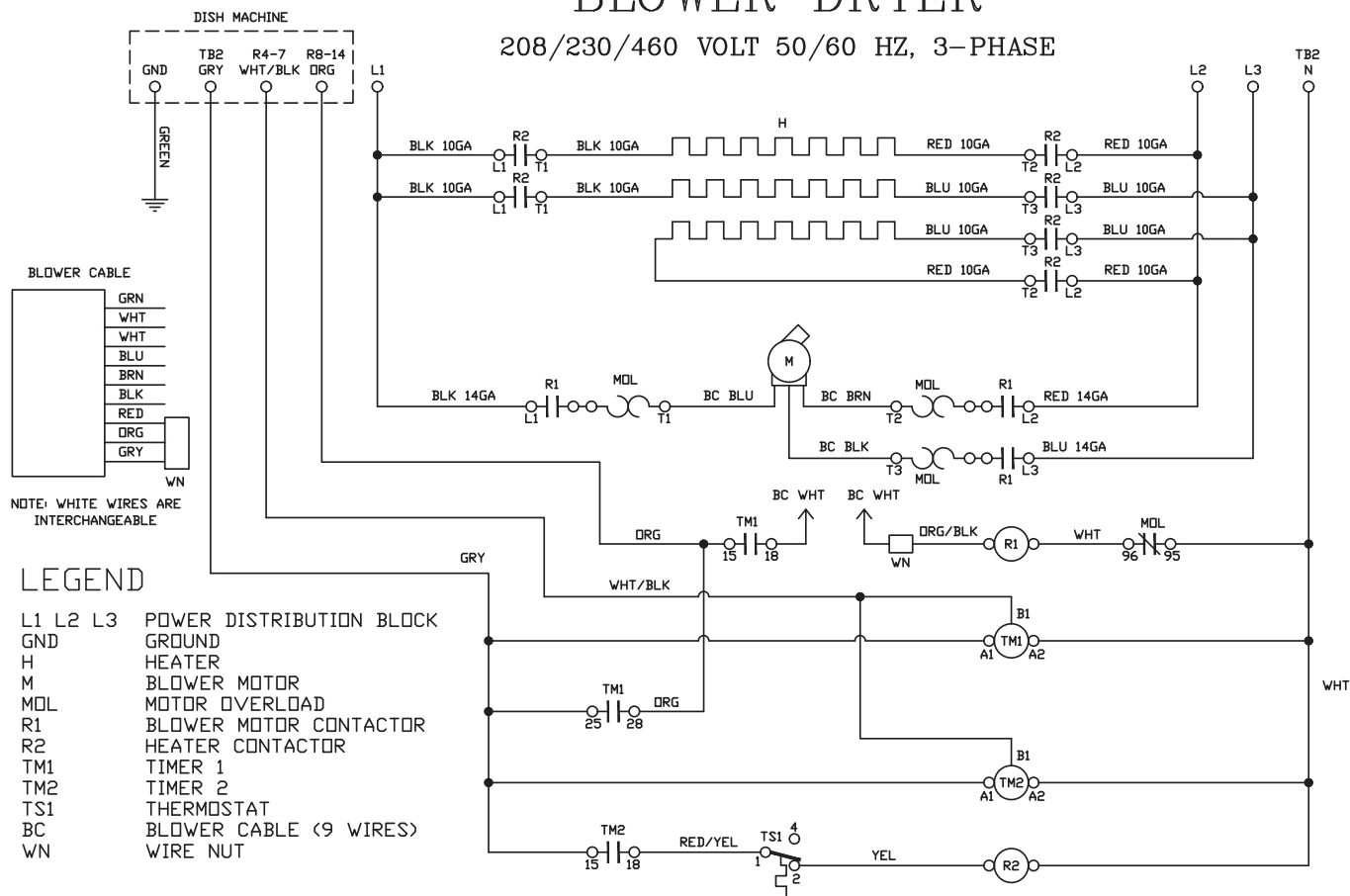
STEAM BLOWER, 208-230 V, 60 HZ, 3-PH, R-L

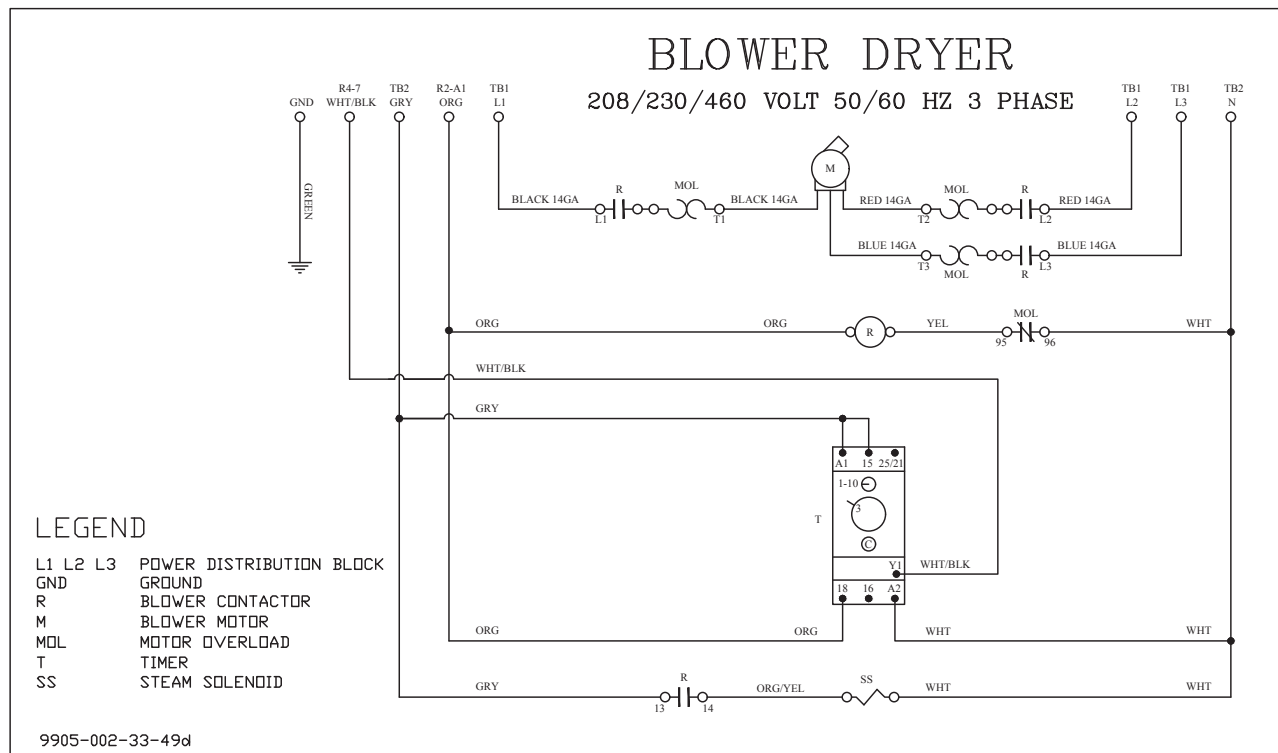
ITEM	QTY	DESCRIPTION	PART NUMBER
1	1	Box, Blower Air Knives	05700-003-32-98
2	1	Door, Blower	05700-003-33-81
3	1	Guide, Right Door Weldment	05700-031-76-44
4	1	Guide, Left Door	05700-002-32-51
5	1	Support, Door Hood w/Studs	05700-031-84-13
6	1	Door Catch, 44 Weldment	05700-031-84-80
7	1	Base, Blower R-L	05700-003-33-56
8	2	Cover, Housing Sides	05700-003-33-67
9	1	Cover, Housing Top	05700-003-33-68
10	2	Cover, Housing Front and Back	05700-003-33-69
11	1	Frame, Blower Weldment	05700-003-33-70
12	1	Hood, Blower Weldment	05700-003-33-72
13	1	Ground Lug	05940-200-76-00
14	1	Contactor, 3-Pole, 50 A	05945-002-24-70
15	1	Contactor, Drive Motor	05945-111-68-38
16	1	Overload 2.5-4 RT1K Prewash Motor	05945-111-68-41
17	1	Terminal Block, 3-Pole	05940-011-48-27
18	2	Timer	05945-004-22-78
19	1	Din Rail 3 9/10" Long	05700-002-16-00
20	1	Decal, L1 L2 L3	09905-101-12-66
21	1	Rack Rail, Left	05700-003-33-84
22	1	Rack Rail, Right	05700-003-33-85
23	1	Plate, Pawl Bar	05700-011-68-77
24	1	Tub, Blower Weldment	05700-003-33-70
25	1	Vent Cowl Assembly	05700-041-86-93
26	2	Gasket, Drive Gutter	05330-011-68-55
27	1	Gutter, Pawl Bar Weldment	05700-021-66-86
28	1	Block, Guide Bottom	05700-011-69-50
29	1	Bracket, Pawl Bar Roller w/Studs	05700-031-84-68
30	2	Shaft, Roller	05700-011-68-14
31	2	Roller, Bracket Rod	05700-011-68-16
32	2	Screw, 1/4-20 x 1 3/4 Hex Head	05305-274-10-00
33	102	Locknut, 1/4-20 Hex w/Nylon Insert	05310-374-01-00
34		Item intentionally left blank.	
35	1	Brkt, Pawl Bar Roller No Tabs	05700-031-92-36

ITEM	QTY	DESCRIPTION	PART NUMBER
36	2	Hook, Middle Curtain	05700-011-72-65
37	2	Curtain X-Long, 20 1/2" W x 24 1/2" L	08415-002-47-37
38	2	Rod, Curtain	05700-021-73-43
39	1	Panel, Front Dress Weldment	05700-003-34-03
40	4	Bolt, Hex Head 1/4-20 x 3/4"	05305-274-04-00
41	24	Bolt, 1/4-20 x 1/2" Long	05305-274-02-00
42	56	Insert, 10-32	05340-111-47-27
43	56	Screw, 10-32 x 3/8"	05305-173-12-00
44	1	Baffle, Vent Cowl Weldment	05700-002-11-47
45	13	Screw, 1/4-20 x 5/8" SS Hex Head	05305-274-24-00
46	1	Nut, Hex 1/4-20	05310-274-01-00
47	1	Pawl Bar, 48" Blower Dryer	05700-002-92-11
48	1	Plate, Gutter	05700-003-34-08
49	1	Drain, Modified	05700-011-79-45
50	1	Fitting, 90 1 1/2" FNPT x Slip PVC Sink	04730-003-31-52
51	1	Bushing, 1 1/2" Spigot x 1" FNPT PVC	04730-003-31-53
52	1	Fitting, 1" Barb x 1" NPT PP Straight	04730-003-31-51
53	1	Drain Hose	05700-003-34-10
54	2	Clamp, Reg Range 13/16 - 1 1/2" #16	04730-719-06-09
55	1	Grommet, Heyco Split	05975-200-40-00
56	2	Snap Bushing, Heyco 1 1/8"	05975-210-08-00
57	2	Fitting, Conduit, 90-degree, 1/2", Plastic	05975-011-45-14
58	1	Conduit, Blower	05700-003-34-11
59	2	Fitting, 1/2" Plastic	05975-011-45-13
60	1	RinseThermostat, 175-195 °F	05930-003-06-48
61	1	Box, Control Weldment	05700-003-34-12
62	13	Nut, Lock 10-24 ss Hex w/Nylon Insert	05310-373-01-00
63	2	Nut, Lock 6-32 Hex w/Nylon Insert	05310-373-03-00
64	1	Blower Assembly	05700-003-34-13
65	1	Input, Piping Assembly	05700-002-93-94
66	1	Outlet, Piping Assembly	05700-002-03-95
67	2	Brkt, Steam Plumbing	05700-003-34-15
68	1	Blower Conduit	05700-003-34-17
69	1	Heater, Steam Coil (Not Shown)	04420-002-76-68

BLOWER DRYER

208/230/460 VOLT 50/60 HZ, 3-PHASE







Jackson WWS, Inc. • 6209 N. US Hwy 25E • Gray, KY 40734 USA
1.888.800.5672 • www.jacksonwws.com