

460 V DRAIN WATER TEMPERING KIT - 06401-004-56-12
OLD 208/230 V DRAIN WATER TEMPERING KIT - 06401-002-59-99



WARNING! This kit should be installed only by qualified service personnel to reduce the risk of electric shock, serious injury, or fire. A plumbing permit and the services of a licensed plumber and electrician might be required in some areas.



CAUTION! Failure to install this kit within the guidelines might adversely affect safety, performance, component life, and warranty coverage.

PREPARATION



1. Drain the machine completely.
2. Ensure that incoming water to the machine is secured either by use of a shut-off valve or by disconnecting the incoming water line.
3. Disconnect electrical power at the breaker or disconnect switch.
4. Lock-out/tag-out in accordance with procedures and codes.

TOOLS REQUIRED

- 7/16" Wrench
- Phillips Screwdriver
- Flathead Screwdriver
- Wire Crimper

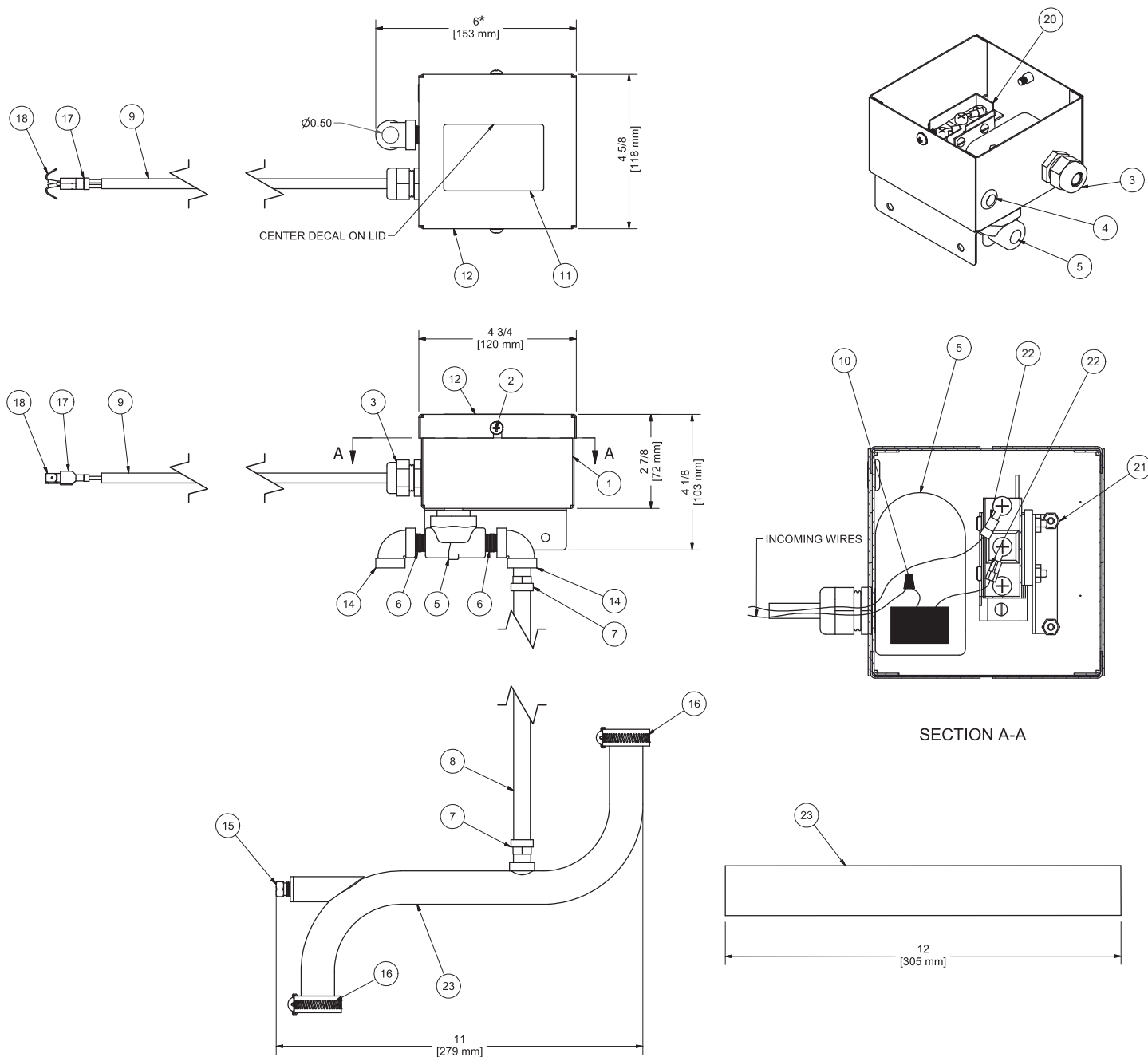
SCHEMATIC

- Refer to machine schematic.

PARTS INCLUDED

NOTICE

All parts come completely assembled except for items 15, 16, 17, 18, and 24.
These items are shipped in a bag and are assembled during installation.



*Dimensions are in inches unless otherwise noted.

PARTS INCLUDED

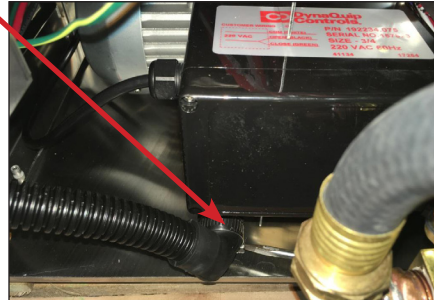
ITEM	QTY	DESCRIPTION	PART NUMBER
1	1	Box, Drain Water Tempering	05700-002-69-96
2	2	Screw, 10-32 x 1/2" with Washer	05305-002-32-37
3	1	Fitting, Liquid-tight, Black	05975-011-59-50
4	1	Grommet, 1/2 OD x .38 ID	05325-011-46-73
5	1	Solenoid Valve, 1/4", 240 V (208/230 V Machines) Solenoid Valve, 1/4", 110 V (460 V Machines)	04810-002-31-09 04810-002-22-11
6	2	Nipple, 1/4" Close Brass	04730-207-02-00
7	2	Fitting, 1/4" Barb, 1/4" Swivel	04730-011-95-41
8	1	Hose, 5/16" x 36"	05700-003-06-97
9	1	Cable, 18 Gauge, 2-Conductor, 48"	05700-003-06-99
10	1	Wire Nut, Blue Metal	05945-111-01-00
11	1	Label, Disconnect Power Warning	09905-004-08-16
12	1	Lid, Drain Water Tempering Box	05700-002-67-16
13	1	Tube, Drain Water Tempering	05700-002-67-17
14	2	Elbow, 1/4" Stainless	04730-003-07-07
15	1	Fitting, 1/4" Brass Nut/Sleeve	05310-924-02-05
16	2	Clamp, 13/16" to 1 1/2"	04730-719-06-09
17	2	Terminal, Peach Female (JPX) Terminal, Blue Pin (208/230 V DishStar/Avenger Machines) Terminal, Red Forked (460 V DishStar/Avenger Machines)	05940-200-58-00 05940-003-82-28 05940-200-01-00
18	2	Connectors, Molex Tab (JPX Only)	05940-200-42-00
19	1	Instructions, Undercounter Drain Water Tempering	07610-002-99-20
20	1	Thermostat, Wash	05930-003-13-65
21	2	Nut, Lock 6-32 Hex with Nylon Insert	05310-373-03-00
22	2	Terminal, Red Ring	05940-011-30-79
23	1	Hose, 1" ID x 12" Long	04720-111-39-73

PROCEDURE



WARNING! Follow Preparation section on page 1 before proceeding!

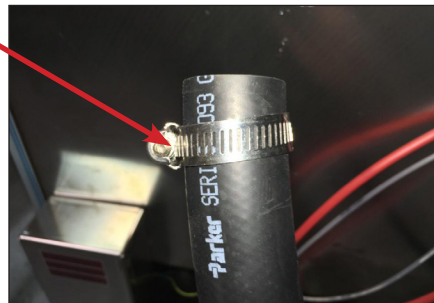
1. Follow the Preparation section on page 1 and move the machine so the back can be accessed.
2. Loosen the clamp on the drain hose.



3. Remove the drain hose, keeping the clamp on it.

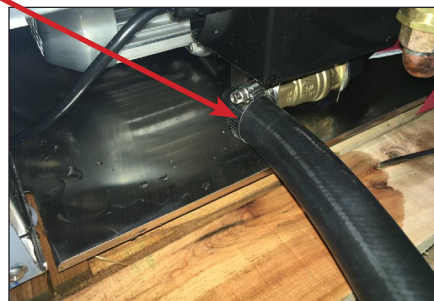


4. Put a clamp from the kit on the bottom of the 12" hose from the kit.



A clamp from the kit is used in this step.

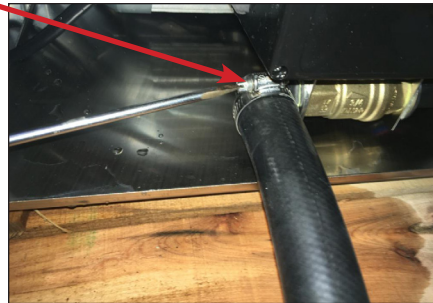
5. Place the 12" hose from the kit where the drain hose was located.



The hose from the kit is used in this step.

PROCEDURE

6. Tighten the clamp.



7. Put the other clamp from the kit on top of the 12" hose from the kit.

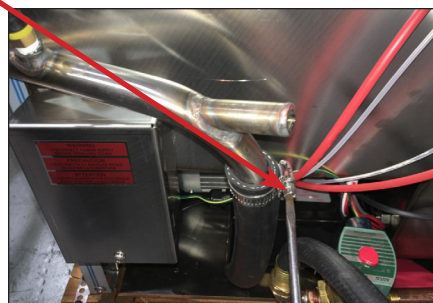


The other clamp from the kit is used in this step.

8. Place the bottom of the drain water tempering tube into the top of the 12" hose from the kit.

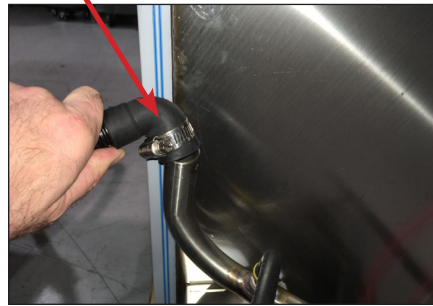


9. Tighten the clamp.



PROCEDURE

10. Put the drain hose removed in Step 3 (with clamp) onto the top of the drain water tempering tube.



11. Tighten the clamp, ensuring the drain hose is oriented as shown.



12. Mount the drain water tempering box to the closest practical surface within 18" of the back of machine.



*Shown
mounted
on side of
machine.*



**CAUTION! Mount box
within 18" of the back of
machine!**



**CAUTION! Do NOT drill
holes in the wash tank!**

NOTICE

1/4" holes can be drilled in machine panels to mount the drain water tempering box.

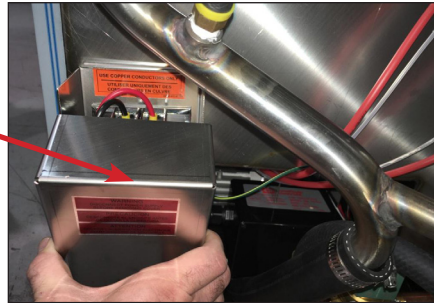
CAUTION! Do NOT mount the drain water tempering box to the wash tank, as drilled holes could result in leaks.

NOTICE

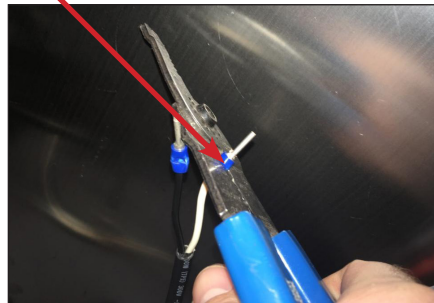
If mounting to machine isn't practical, the drain water tempering box can usually be mounted wherever the machine's chemical containers are located. If this isn't practical, it can be mounted to a wall, cabinet, table leg, etc.

PROCEDURE

13. Remove the terminal box cover and route electrical wires from the drain water tempering box through the hole in the bottom of the terminal box.



14. Crimp terminals from the kit on the black and white wires from the drain water tempering box.



Terminals from the kit are used in this step.



CAUTION! Ensure correct terminals are used! Terminals are model and voltage-specific.

NOTICE

Use blue terminals for 208/230 V DishStar and Avenger. Use red terminals for 460 V DishStar and Avenger. Use pink terminals for JPX.

15. For 208/230 V DishStar and Avenger, connect the black wire from the drain water tempering box to incoming power supply on L1 (for JPX models, connect the black wire to heater contactor on L1).



CAUTION! Ensure correct wiring! Wiring is model and voltage-specific.



CAUTION! Ensure wires cannot be pulled out!

208/230 V



NOTICE

After connecting and tightening, ensure black wire and incoming power wire cannot be pulled from the terminal block.

Step 15 continued on next page.

PROCEDURE

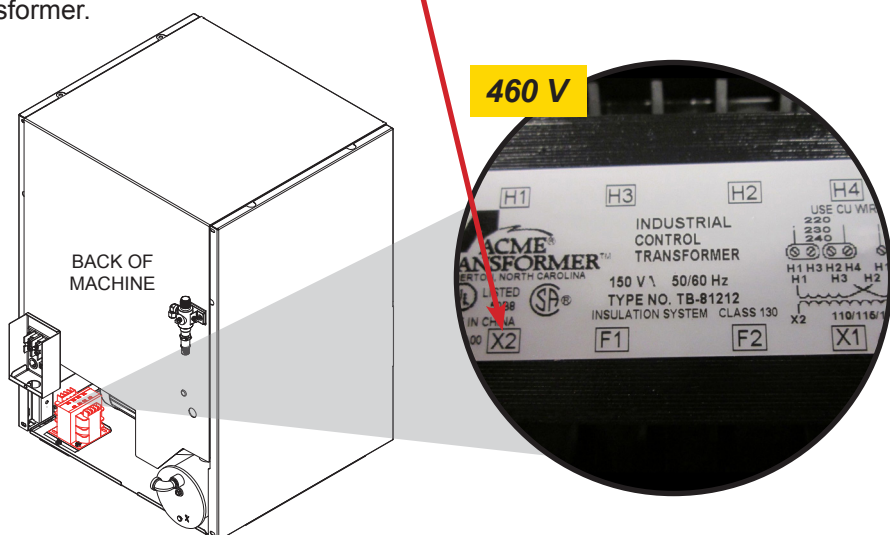


CAUTION! Ensure correct wiring! Wiring is model and voltage-specific.



CAUTION! Ensure wires cannot be pulled out!

Step 15 Continued: For 460 V DishStar and Avenger, connect the black wire from the drain water tempering box to X2 on the secondary side of the T1 transformer.



16. For 208/230 V DishStar and Avenger, connect the white wire from the drain water tempering box to incoming power supply on L2 (for JPX models, connect the white wire to heater contactor on L2).

208/230 V



CAUTION! Ensure correct wiring! Wiring is model and voltage-specific.

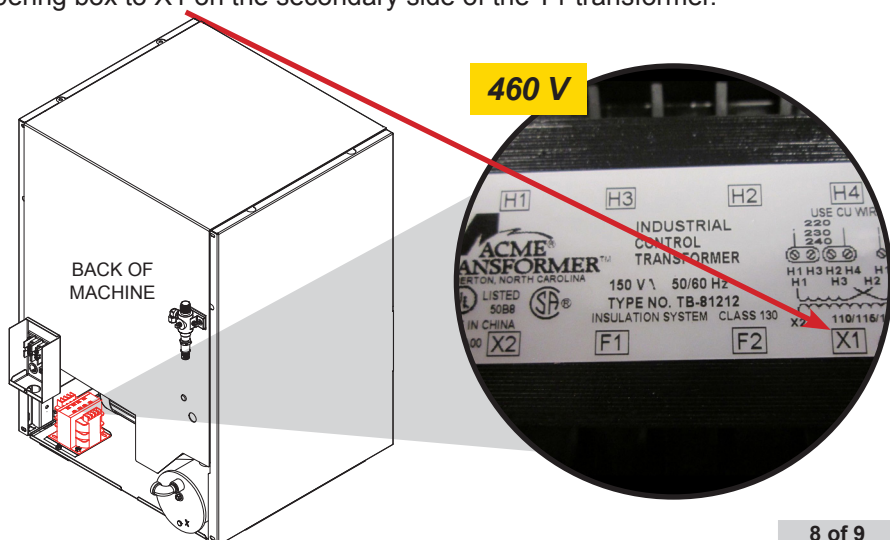


CAUTION! Ensure wires cannot be pulled out!

NOTICE

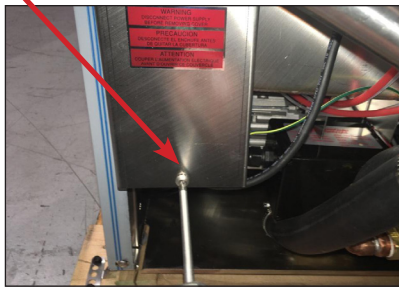
After connecting and tightening, ensure white wire and incoming power wire cannot be pulled from the terminal block.

For 460 V DishStar and Avenger, connect the white wire from the drain water tempering box to X1 on the secondary side of the T1 transformer.

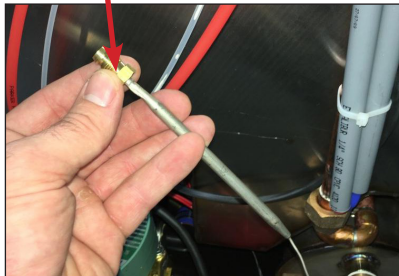


PROCEDURE

17. Replace the terminal box cover.



18. Place thermostat fitting from the kit on the thermostat probe attached to the drain water tempering box.



The thermostat fitting from the kit is used in this step.

19. Insert the thermostat probe and fitting into the hole on the side of the drain water tempering tube.



20. Tighten the thermostat fitting with a 7/16" wrench.



**CAUTION! Do NOT
overtighten!**

21. Connect incoming in-house (not provided) cold water line to the elbow on the drain water tempering box.



22. Restore power and water to the machine.

23. Run three cycles to check operation and ensure there are no leaks.