



VENTLESS ASSEMBLY INSTRUCTIONS

HT-180 HH VER

These instructions show how to mount the Ventless Energy Recovery (VER) system onto the HT-180 HH VER dishmachine.

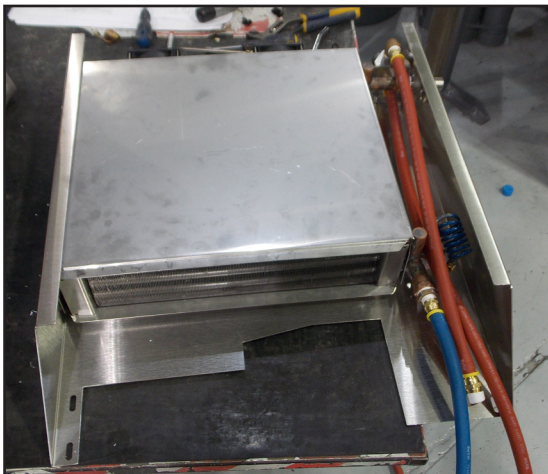
TOOLS REQUIRED:

- 7/16" Wrench
- 9/16" Wrench
- Adjustable Wrench

SHIPMENT:

Due to shipping constraints, the HT-180 HH VER is shipped disassembled.

1 VER System



The VER system is packaged separately from the machine.

2 Machine

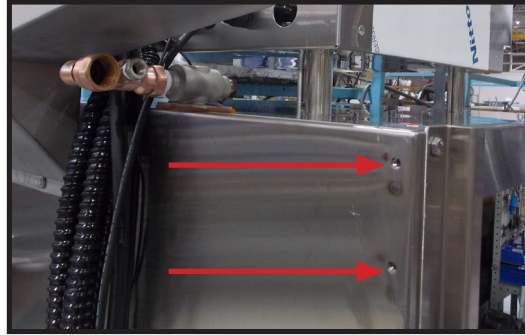


Fully-assembled Unit



INSTRUCTIONS:

- 1 Locate and remove the four 1/4-20 bolts using a 7/16 wrench. These are located in the top-left and right corner of the machine.



- 2 Lift the VER system up and over the lower air inlet, then align and slide onto the lower air inlet. The VER system should slide inside the lower air inlet at the seam.

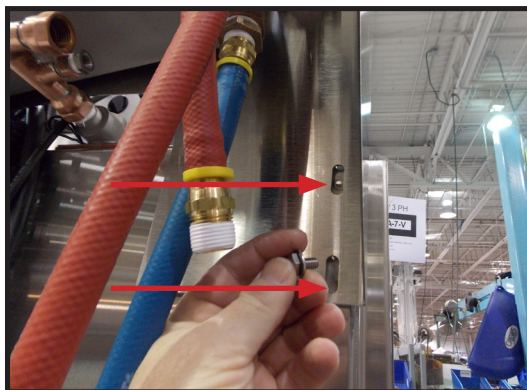


Lower Air Inlet Seam

VER System



- 3 Reinstall the four 1/4-20 bolts that were removed in Step 1 with a 7/16 wrench. They insert into the machine on the right and left corners.



INSTRUCTIONS (CONT.):

- 4** Connect pressure gauge with a 9/16 wrench. Connect the two hoses using an adjustable wrench. The hoses are cut-to-length and will only reach their intended connection point.

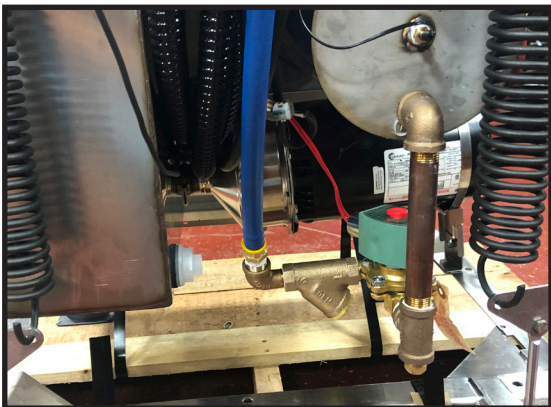
A. Connect the Gauge



B. Final Rinse Inlet



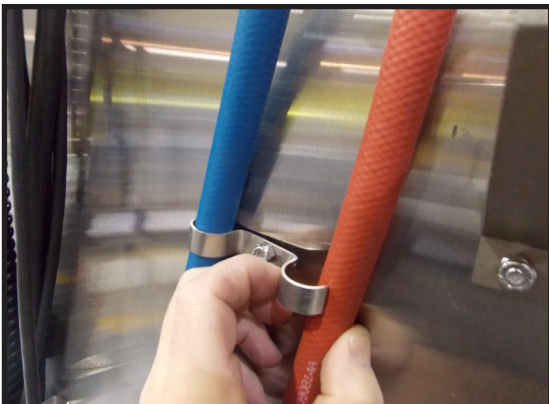
C. Inlet from Coil



D. Booster Outlet



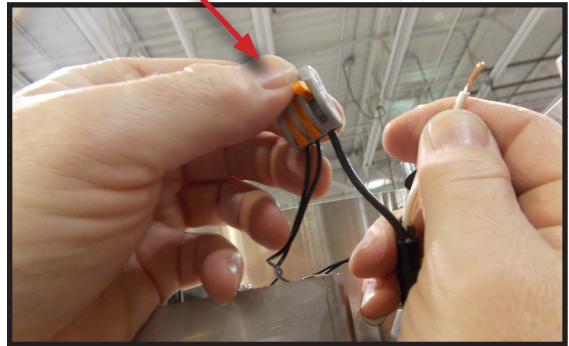
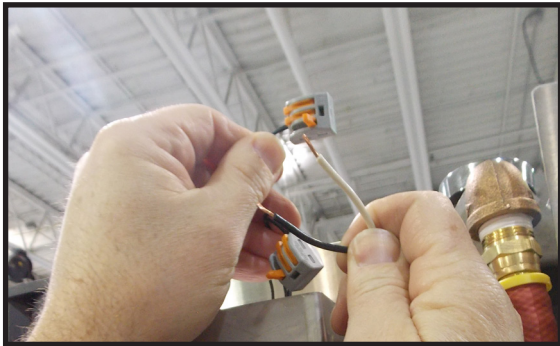
- 5** Before moving to the next step, tidy up the hoses by sliding them under the clamps. You might need to loosen the nut to accomplish this.



INSTRUCTIONS (CONT.):

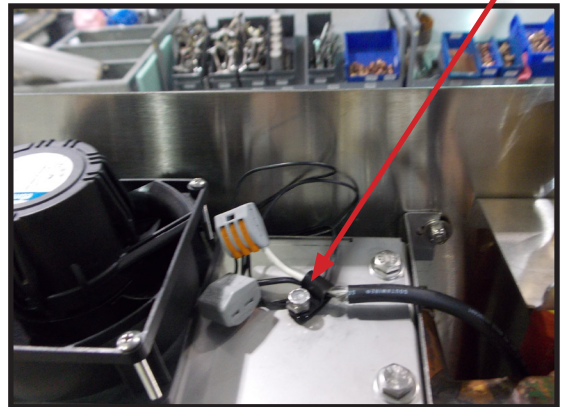
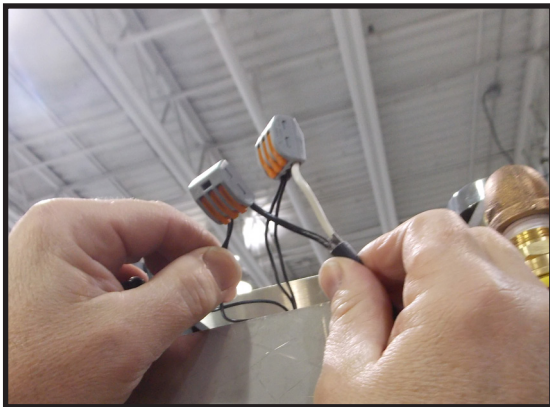
- 6** Locate the wire connectors at the top of the unit and connect the white and black wires from the machine.

Slide wire into the hole and push the lever down.



- 7** Tidy up the wires and lock them in place with the P-Clamp on top of the unit.

P-Clamp



- 8** The machine is now fully-assembled.

