

### DRAIN WATER TEMPERING KIT - 06401-004-59-11



**WARNING!** This kit should be installed only by qualified service personnel to reduce the risk of electric shock, serious injury, or fire. A plumbing permit and the services of a licensed plumber and electrician might be required in some areas.

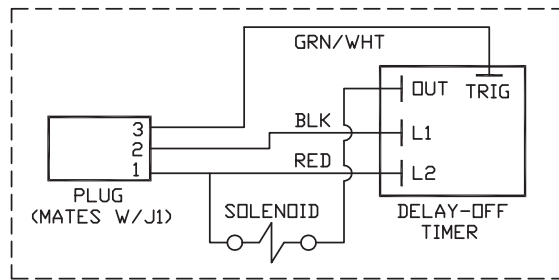
Turn off the power supply and place the dishwasher disconnect (if applicable) in the off position. Lock-out/Tag-out to prevent the power supply from being turned back on inadvertently.

**CAUTION!** Failure to install this kit within the guidelines might adversely affect safety, performance, component life, and warranty coverage.

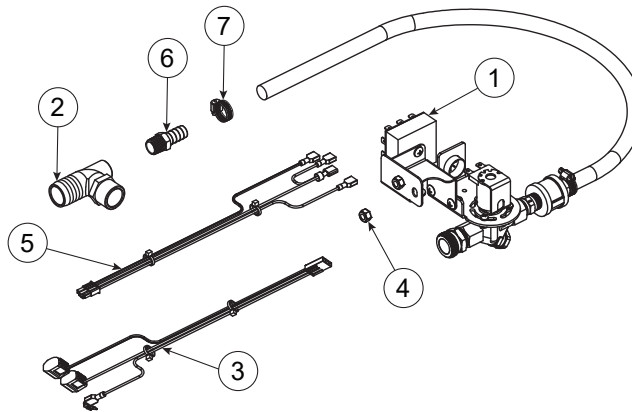
### TOOLS REQUIRED

- 1/4" Nutdriver/Socket
- 5/16" Nutdriver/Socket
- 7/16" Nutdriver/Socket
- 7/16" Wrench
- Adjustable Wrench
- Flathead Screwdriver
- Phillips Screwdriver
- Pipe Thread Sealant Tape

### SCHEMATIC



### PARTS INCLUDED



ITEM	QTY	DESCRIPTION	PART NUMBER
1	1	Drain Water Tempering Assembly	05700-004-60-53
2	1	Elbow, Stainless Steel	09515-004-53-19
3	1	Harness, Drain Water Tempering (ships already connected)	05700-004-60-39
4	2	Locknut, 1/4-20 Hex with Nylon Insert	05310-374-01-00
5	1	Harness, Timer (ships already connected)	05700-004-60-43
6	2	Fitting, Barbed, 3/8" x 1/2" Brass	04730-004-56-15
7	2	Clamp, Mini	04730-011-36-05

# DRAIN WATER TEMPERING INSTALL

DELTA HT-E-SEER  
DISHSTAR ADA-SEER

## PROCEDURE

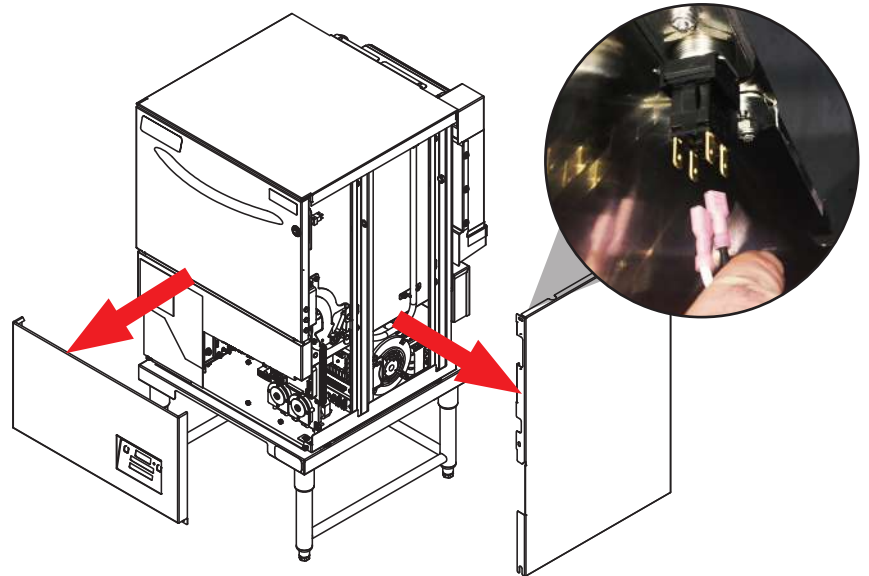


*Disconnect electrical power at the breaker or disconnect switch and tag-out in accordance with procedures and codes.*

*Turn off the water supply and drain machine.*

1. Using 7/16 nutdriver/socket, remove front kick panel. With phillips screwdriver, remove right dress panel from machine. Keep all hardware. Unplug wires from start switch.

*Delta shown.*



2. Loosen clamp on drain hose with 5/16 nutdriver/socket or flathead screwdriver.



3. Remove drain hose.



### PROCEDURE

- Using adjustable wrench, unscrew black plastic coupling from drain valve assembly.



- Apply pipe thread sealant tape to 09515-004-53-19, stainless steel elbow (Item #2 from kit). Replace black plastic coupling from Step 4 with stainless steel elbow, oriented as shown below.

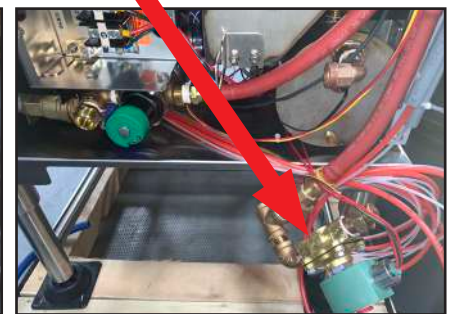


**CAUTION!** Pipe thread sealant tape must be applied to all plumbing components!

Item #2 from kit used in this step.



- Using adjustable wrench, remove solenoid valve assembly.



- Using 7/16 nutdriver/socket, remove plumbing support bracket.

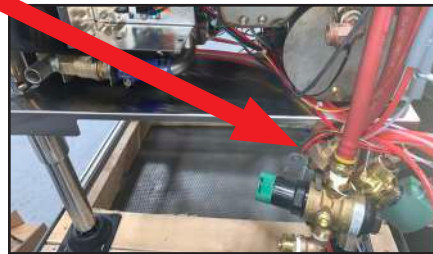


### PROCEDURE

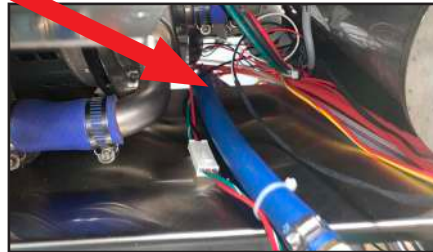
8. Remove Pressure Regulating valve (PRV) using 7/16 wrench.



9. Push wires and tubes out of the way.

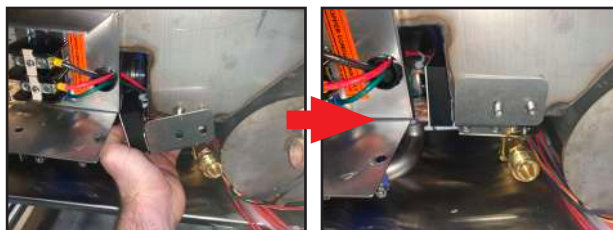


10. Route end of blue hose on Item #1 through hole in machine stand and under wash motor.



*Item #1 from kit used in this step.*

11. Orient 05700-004-60-53, drain water tempering assembly (Item #1 from kit), as shown below. Rotate assembly down and to left and push under terminal box and edge of rinse tank. Then place holes in assembly bracket over studs freed in Step 7.



*Item #1 from kit used in this step.*

12. Route blue hose on Item #1 under wash motor and out next to drain valve assembly.



*Item #1 from kit used in this step.*

### PROCEDURE



**CAUTION!** Pipe thread sealant tape must be applied to all plumbing components!

*Item #6 from kit used in this step.*

13. Ensure pipe thread sealant tape is applied to fitting 04730-004-56-15, Item #6 from kit that shipped in the bag. Install fitting into back of stainless steel elbow installed in Step 5 (elbow may be turned if necessary).



14. Put mini-clamp 04730-011-36-05, Item #7 from kit that shipped in the bag, on end of blue hose (orient clamp so it can be tightened later). Install hose onto barbed end of fitting installed in Step 12.



*Item #7 from kit used in this step.*

15. Using 1/4" nutdriver/socket or flathead screwdriver, tighten mini-clamp.

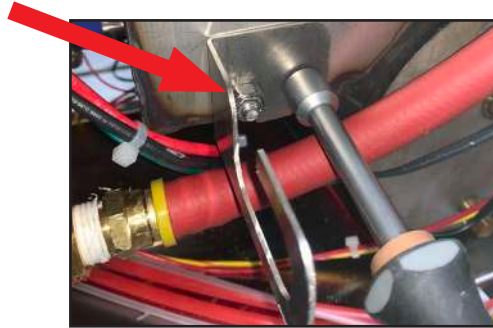


16. Attach drain hose removed in Step 3 to front of stainless steel elbow. Use 5/16 nutdriver/socket or flathead screwdriver to tighten clamp.

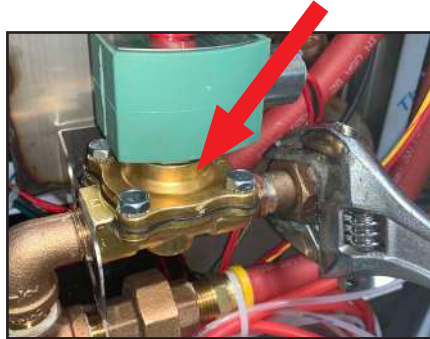


## PROCEDURE

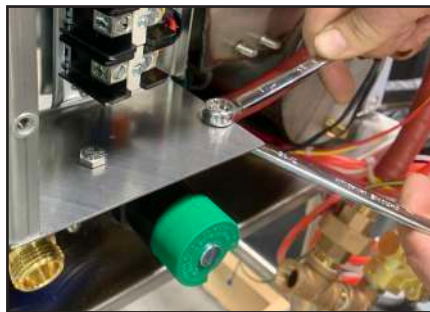
17. Re-install plumbing support bracket removed in Step 7.



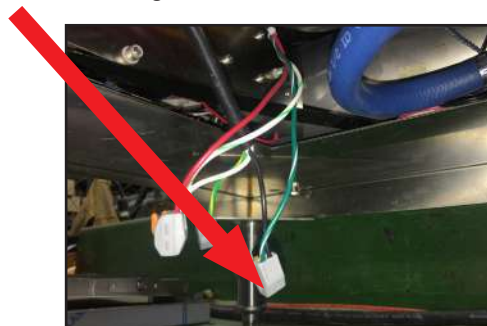
18. Using adjustable wrench, re-install solenoid valve assembly.



19. Re-install PRV removed in Step 8.



20. On machine, locate 2-way gray/orange splicing connector with a green/white wire and black wire (trace thick black wire from drain valve, will come out of that). Pull wires down through hole in machine stand.



# DRAIN WATER TEMPERING INSTALL

DELTA HT-E-SEER  
DISHSTAR ADA-SEER

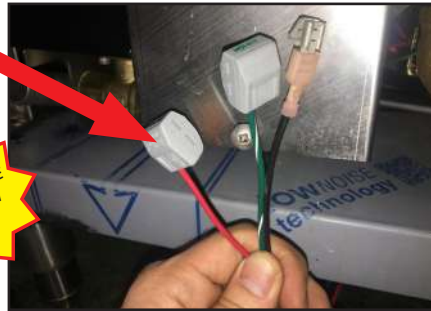
## PROCEDURE

21. Locate end of wires from drain water tempering assembly (Item #3 from kit) and slide wire ties down to connector.

Item #3 from kit used in this step.

On machines with serial numbers after 22E406186, RED & BLK wires are stripped and ready to connect to terminal block.

DIFFERENCE BETWEEN UNITS



22. Route wires under machine and through hole in machine stand.



23. Disconnect green/white and black wires from machine 2-way gray/orange splicing connector and connect them to the 3-way gray/orange splicing connector at the end of green/white wire on Item #3 from kit.

Item #3 from kit used in this step.

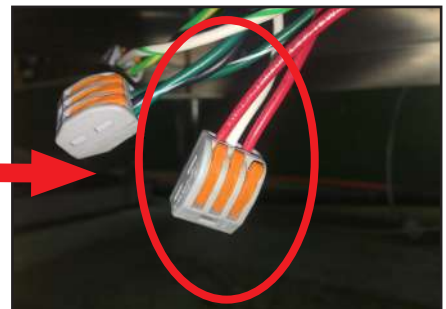


24. Disconnect red and white wires from machine 2-way gray/orange splicing connector and connect them to 3-way gray/orange splicing connector at end of red wire on Item #3 from kit.

Item #3 from kit used in this step.

Skip this step on machines with serial numbers after 22E406186.

DIFFERENCE BETWEEN UNITS



# DRAIN WATER TEMPERING INSTALL

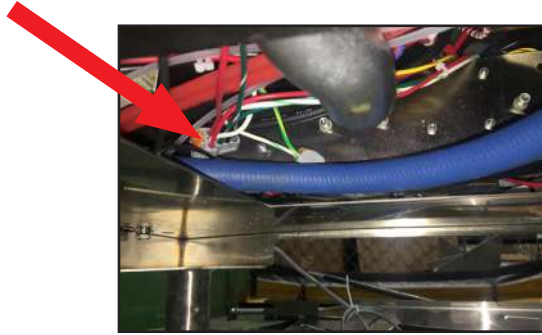
DELTA HT-E-SEER  
DISHSTAR ADA-SEER

## PROCEDURE

25. Push wiring back under machine.

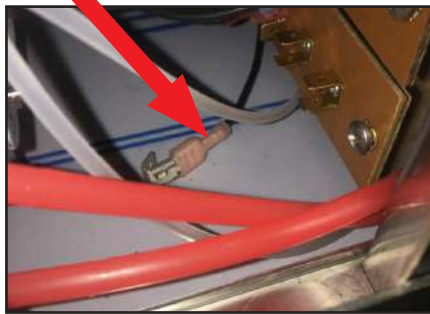
Skip this step on machines with serial numbers after 22E406186.

DIFFERENCE BETWEEN UNITS



26. Route remaining wire (black) on Item #3 from kit under control panel.

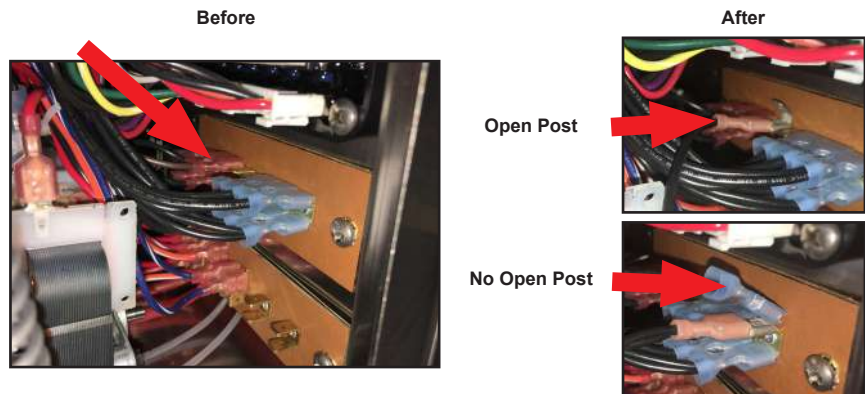
Item #3 from kit used in this step.



27. Connect black wire to an empty post on top terminal board. If no open post, remove one black wire from terminal board and connect to black wire on Item #3 from kit, using piggyback terminal on wire. Connect to post where black wire earlier in the step was originally connected.

Item #3 from kit used in this step.

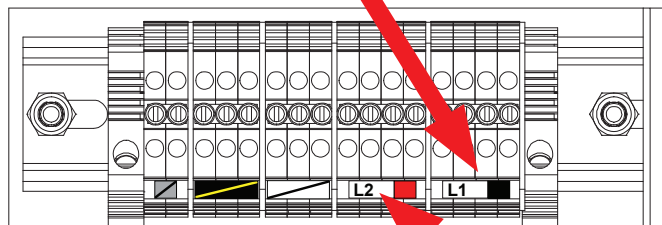
Machines with serial numbers before 22E406186.



DIFFERENCE BETWEEN UNITS

Machines with serial numbers after 22E406186.

Connect black wire to an empty L1 post on terminal block.

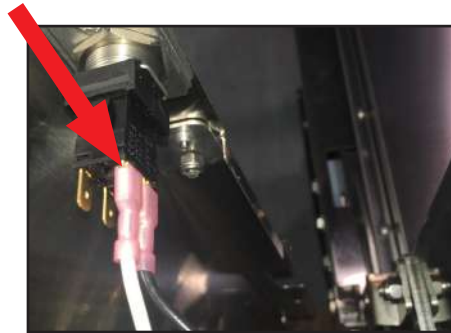


Connect red wire from skipped Step 24 to an empty L2 post on terminal block.



## PROCEDURE

28. Reconnect start switch wires on right dress panel.



29. Replace right dress panel.

30. Replace kick panel.

31. Connect cold water line (3/4" GHT) to inlet on drain water tempering assembly.



32. Restore power and water to machine.