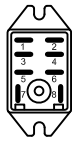


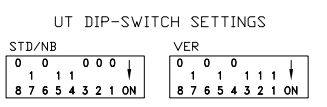
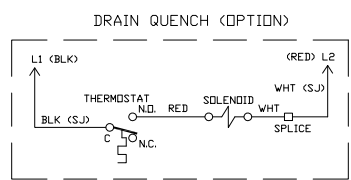
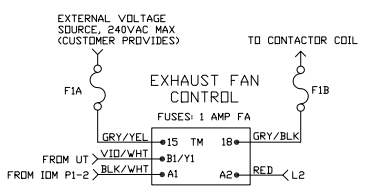
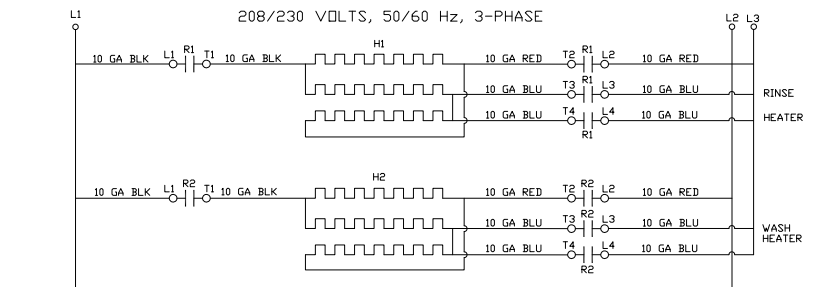
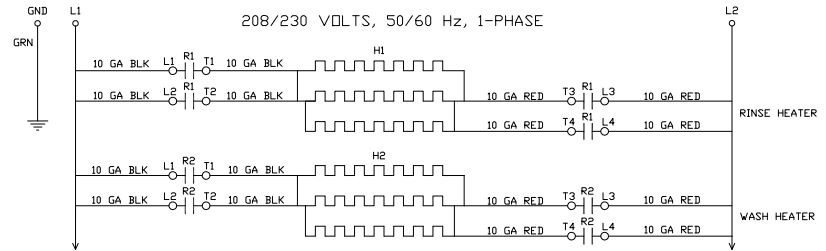
DYNASTAR SCHEMATIC STD/VER

LEGEND

- L1,L2,L3 POWER DISTRIBUTION BLOCK
- GND EARTH GROUND
- H1 HEATER, RINSE
- H2 HEATER, RINSE
- M1 MOTOR, WASH PUMP
- M2 MOTOR, RINSE PUMP
- R1 CONTACTOR, RINSE HEATER
- R2 CONTACTOR, WASH HEATER
- R3 CONTACTOR, WASH PUMP
- R4 RELAY, CONTROL 1
- R5 RELAY, CONTROL 2
- R6 RELAY, FILL LATCH
- R7 RELAY, INITIAL FILL/RINSE CIRCUIT ISOLATOR
- F1 FUSE- EXHAUST FAN
- F2 FUSE- CONSTANT VOLTAGE CONN.
- F3 FUSE- RINSE DISPENSER
- F4 FUSE- DETERGENT DISPENSER
- S1 SWITCH, DOOR
- HLTS HIGH-LIMIT T-STAT, WASH HEATER
- HLRS HIGH-LIMIT T-STAT, RINSE HEATER
- RFS RINSE/FILL SOLENOID
- PS1 PRESSURE SWITCH
- UT UNIVERSAL TIMER
- TM TIMER, EXHAUST FAN



TERMINAL NUMBERING VARIES WITH RELAY BRAND. THIS SCHEMATIC USES THE CONVENTION AT LEFT, REGARDLESS OF BRAND.



Connection Diagram for IO Module

- Input Assignments**
- I1 Wash
 - I2 Cycle
 - I3 Float
 - I4 Rinse
 - I5 Door/Chemicals

- Relay Assignments**
- K1 Power
 - K2 Booster heater
 - K3 Wash heater
 - K4 Varies by model
 - K5 Varies by model
 - K6 Varies by model
 - K7 Varies by model
 - K8 Varies by model
 - K9 Varies by model
 - K10 Varies by model
 - K11 Varies by model
 - K12 Varies by model

