

DRAIN WATER TEMPERING KIT - 06401-004-60-64



WARNING! This kit should be installed only by qualified service personnel to reduce the risk of electric shock, serious injury, or fire. A plumbing permit and the services of a licensed plumber and electrician might be required in some areas.

Turn off the power supply and place the dishwasher disconnect (if applicable) in the off position. Lock-out/Tag-out to prevent the power supply from being turned back on inadvertently.

CAUTION! Failure to install this kit within the guidelines might adversely affect safety, performance, component life, and warranty coverage.

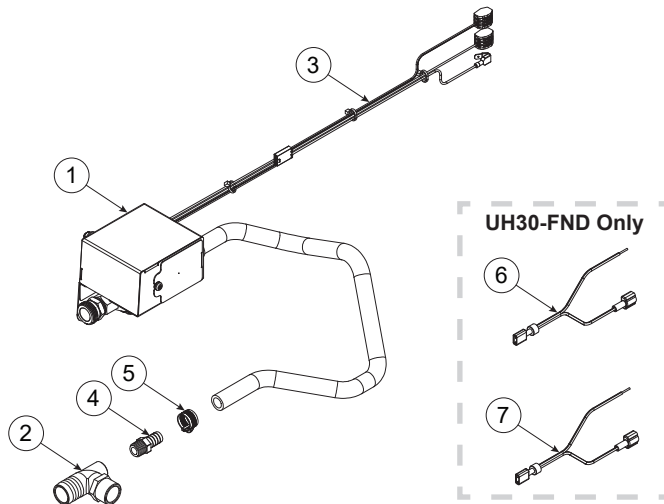
TOOLS REQUIRED

- 1/4" Nutdriver/Socket
- 5/16" Nutdriver/Socket
- 7/16" Nutdriver/Socket
- Adjustable Wrench
- Flathead Screwdriver
- Phillips Screwdriver
- Pipe Thread Sealant Tape

SCHEMATIC

- Reference machine schematic.

PARTS INCLUDED



ITEM	QTY	DESCRIPTION	PART NUMBER
1	1	Drain Water Tempering Assembly	05700-004-59-57
2	1	Elbow, Stainless Steel	09515-004-53-19
3	1	Harness, Drain Water Tempering (ships already connected)	05700-004-60-39
4	2	Fitting, Barbed, 3/8" x 1/2" Brass	04730-004-56-15
5	2	Clamp, Mini	04730-011-36-05
6	1	Jumper, Red (UH30-FND Only)	05700-004-72-52
7	1	Jumper, Green/White (UH30-FND Only)	05700-004-72-51

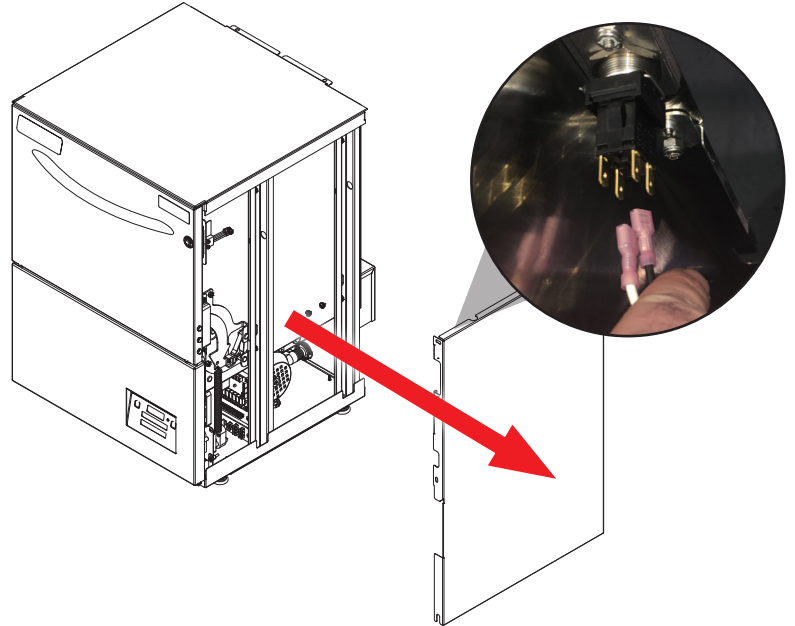
PROCEDURE



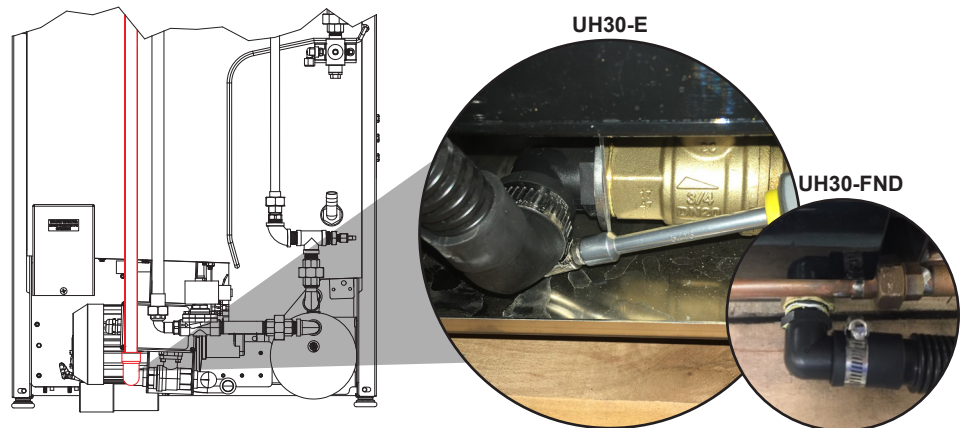
Disconnect electrical power at the breaker or disconnect switch and tag-out in accordance with procedures and codes.

Turn off the water supply and drain machine.

1. Using 7/16 nutdriver, remove front kick panel and keep hardware.
2. Using phillips screwdriver, remove right dress panel from machine and keep hardware. Unplug wires from start switch.



3. Loosen clamp on drain hose with 5/16 nutdriver or flathead screwdriver.



UH30-FND drain hose is oriented differently.

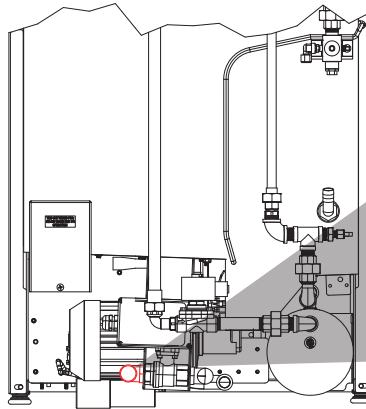
4. Remove drain hose.



PROCEDURE

- Using adjustable wrench, unscrew black plastic elbow from the drain valve assembly.

UH30-FND drain valve is oriented differently.



- Apply pipe thread sealant tape to 09515-004-53-19, stainless steel elbow (Item #2 from kit). Replace black plastic elbow from Step 5 with the stainless steel elbow, oriented as shown below.



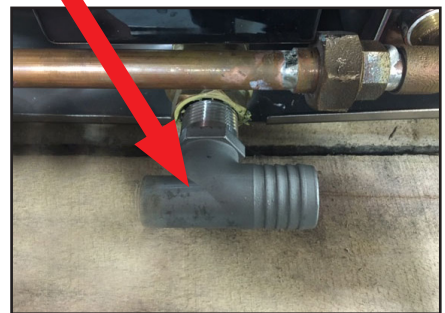
CAUTION! Pipe thread sealant tape must be applied to all plumbing components!

Item #2 from kit used in this step.

UH30-E

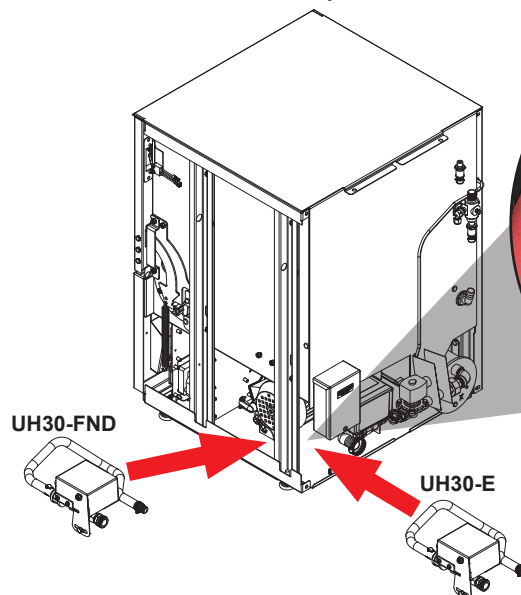


UH30-FND



- Orient 05700-004-59-57, drain water tempering assembly (Item #1 from kit), as shown below. Push box of assembly under terminal block box (if UH30-FND, from side of machine) and push end of red hose under wash motor and out near the drain valve assembly.

Item #1 from kit used in this step.



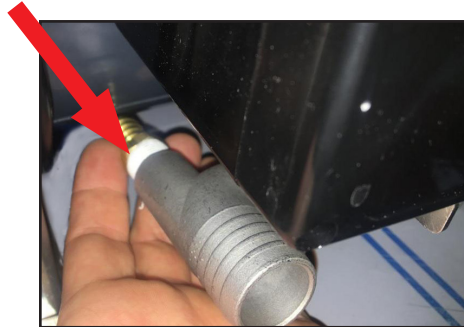
PROCEDURE



CAUTION! Pipe thread sealant tape must be applied to all plumbing components!

Item #4 from kit used in this step.

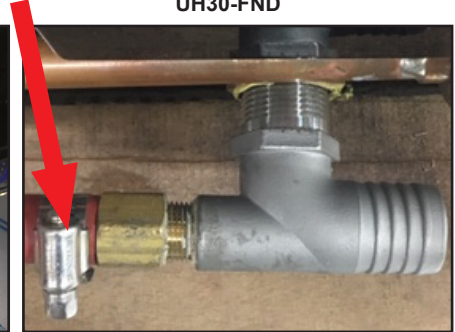
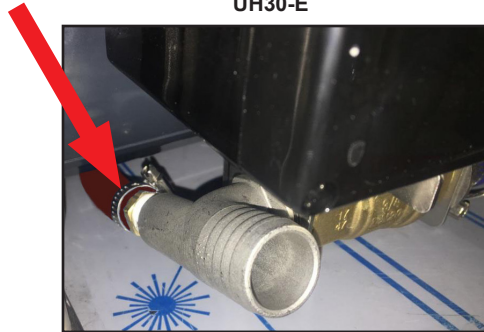
8. Ensure pipe thread sealant tape is applied to fitting 04730-004-56-15, Item #4 from kit that shipped in the bag. Install fitting into back of stainless steel elbow installed in Step 6 (elbow may be turned if necessary).



9. Put mini-clamp 04730-011-36-05, Item #5 from kit that shipped in the bag, on end of red hose and orient clamp so it can be tightened later. Install hose onto barbed end of fitting installed in Step 8.

UH30-E

UH30-FND

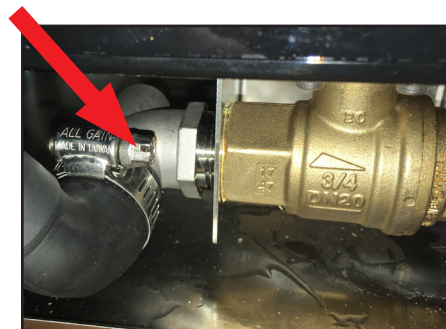


Item #5 from kit used in this step.

10. Using 1/4" nutdriver/socket or flathead screwdriver, tighten mini-clamp.



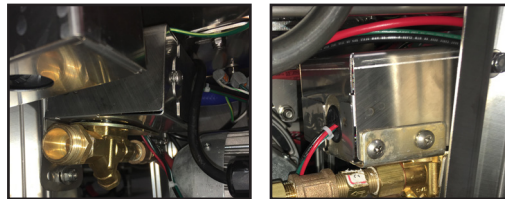
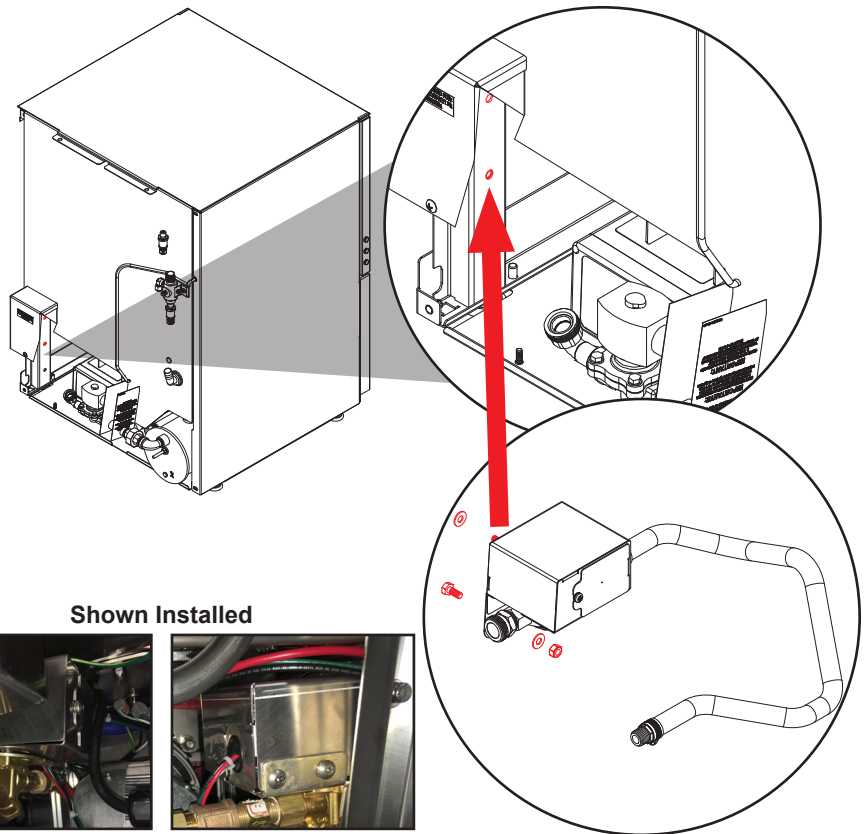
11. Attach drain hose removed in Step 4 to front of stainless steel elbow. Use 5/16 nutdriver or flathead screwdriver to tighten clamp.



PROCEDURE

12. Attach box of 05700-004-59-57, drain water tempering assembly (Item #1 from kit), to holes in machine frame with hardware provided in kit.

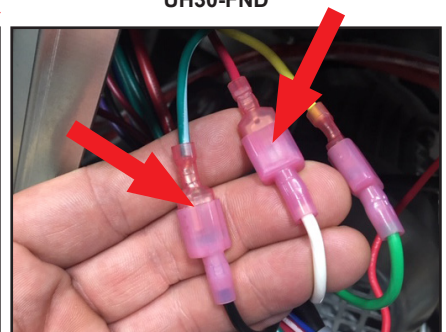
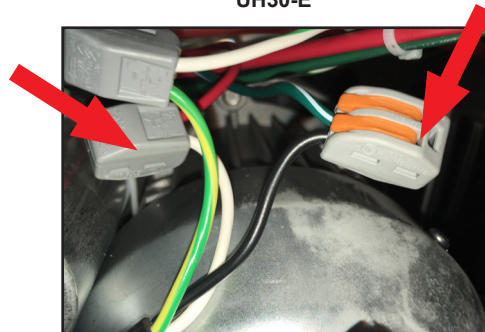
Item #1 from kit used in this step.



13. Trace thick black wire from drain valve and locate 2-way gray/orange connector with a green/white wire and black wire (if UH30-FND, wires are connected by terminals). Also locate 2-way gray/orange connector with a red wire and white wire (if UH30-FND, wires are connected by terminals).

UH30-E

UH30-FND



UH30-FND wires are connected differently.

PROCEDURE

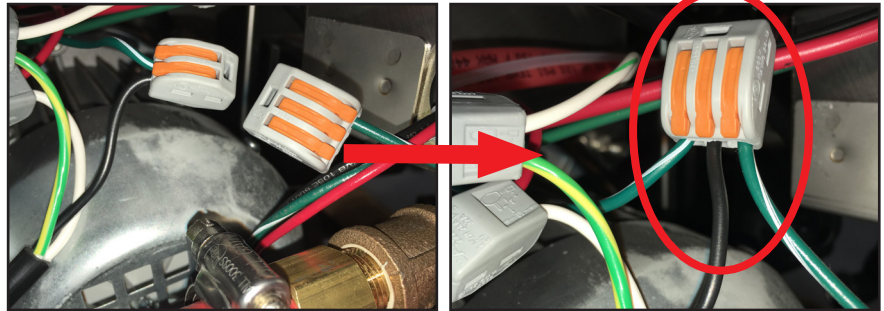


CAUTION! Step 14 is different depending on model.

Item #3 from kit used in this step.

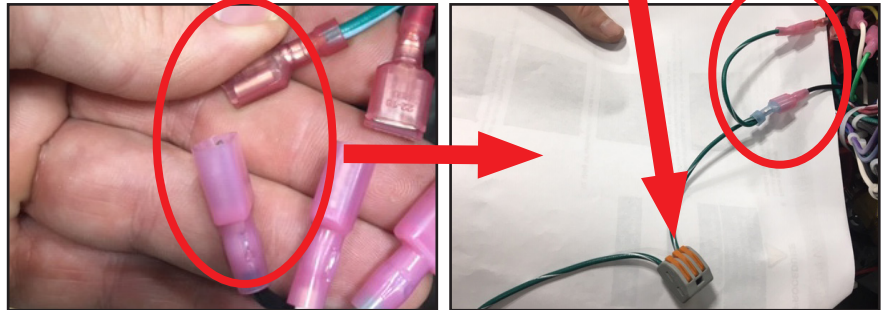
14. UH30-E: Disconnect green/white and black wires and connect them to the 3-way gray/orange connector at the end of green/white wire on Item #3 from kit.

UH30-E



UH30-FND: Disconnect green/white and black wires and connect them to the appropriate terminals on green/white jumper, Item #7 from kit. Connect the loose, stripped wire of the jumper to the 3-way gray/orange connector at the end of green/white wire on Item #3 from kit.

UH30-FND



If UH30-FND, Item #7 from kit used in this step.

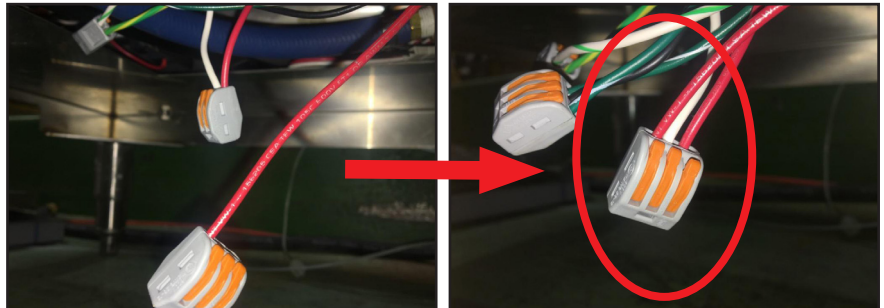


CAUTION! Step 15 is different depending on model.

Item #3 from kit used in this step.

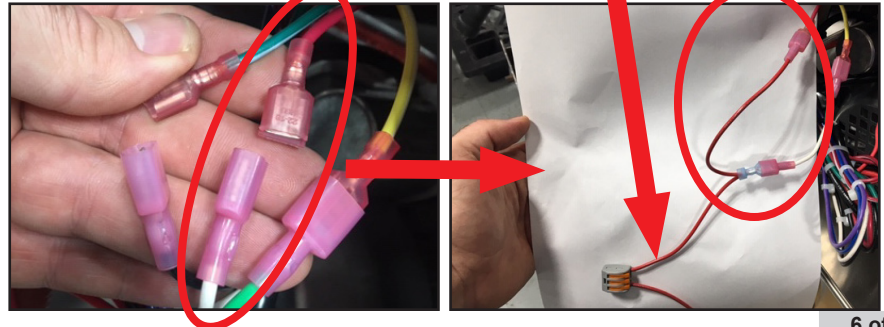
15. UH30-E: Disconnect red and white wires and connect them to the 3-way gray/orange connector at the end of red wire on Item #3 from kit.

UH30-E



UH30-FND: Disconnect red and white wires and connect them to the appropriate terminals on red jumper, Item #6 from kit. Connect the loose, stripped wire of the jumper to the 3-way gray/orange connector at the end of red wire on Item #3 from kit.

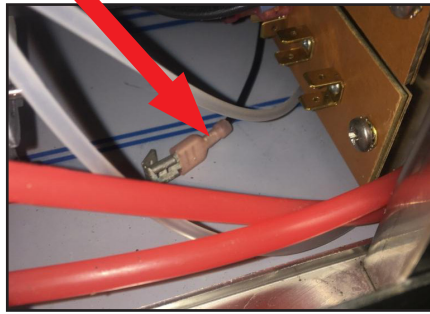
UH30-FND



If UH30-FND, Item #6 from kit used in this step.

PROCEDURE

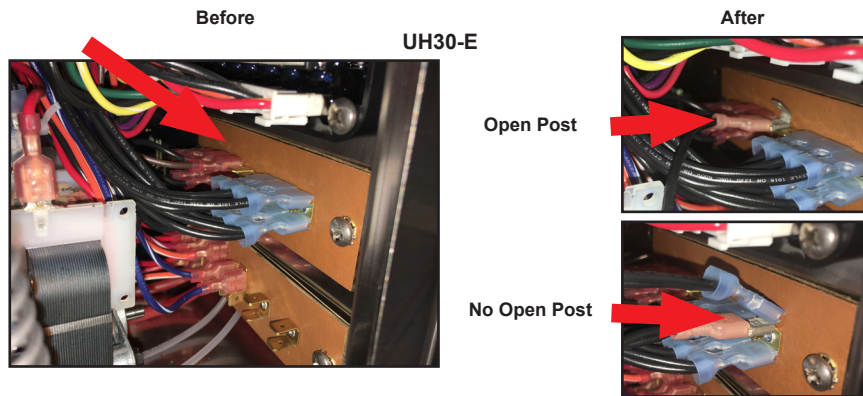
16. Route the remaining wire (black) on Item #3 from kit under the control panel.



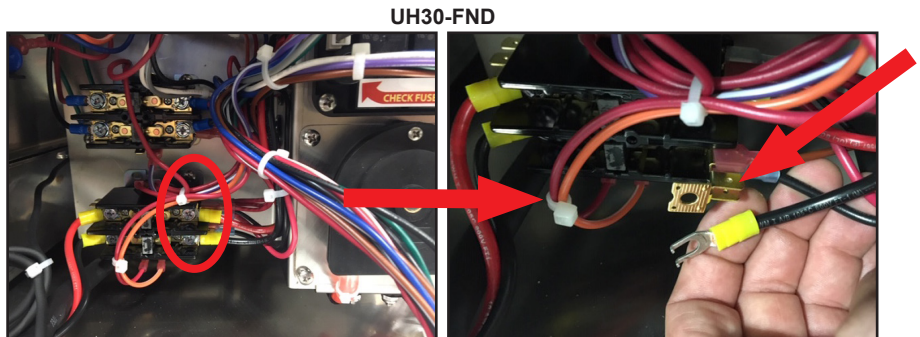
CAUTION! Step 15 is different depending on model.

Item #3 from kit used in this step.

17. UH30-E: Connect black wire to an empty post on the top terminal board. If no open post, remove one of the black wires from the terminal board and connect it to black wire from Step 16, using the piggyback terminal on the wire. Connect to post where black wire from earlier in the step was originally connected.

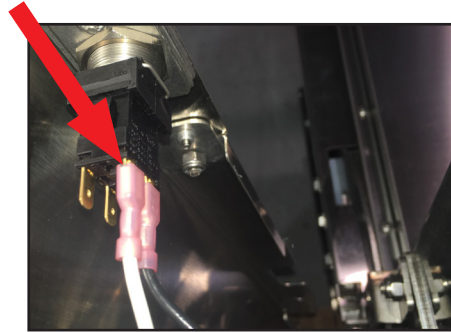


UH30-FND: Using phillips screwdriver, connect black wire to the empty post at the bottom-right of the bottom contactor.

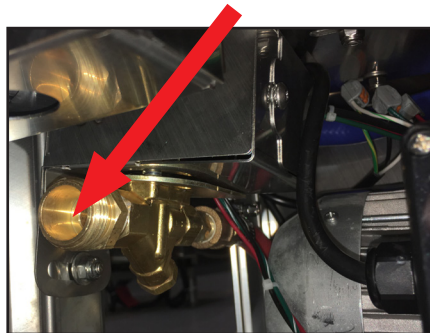


PROCEDURE

18. Reconnect start switch wires on right dress panel.



19. Replace right dress panel.
20. Replace kick panel.
21. Connect cold water line (3/4" GHT) to inlet on drain water tempering assembly.



22. Restore power and water to the machine.