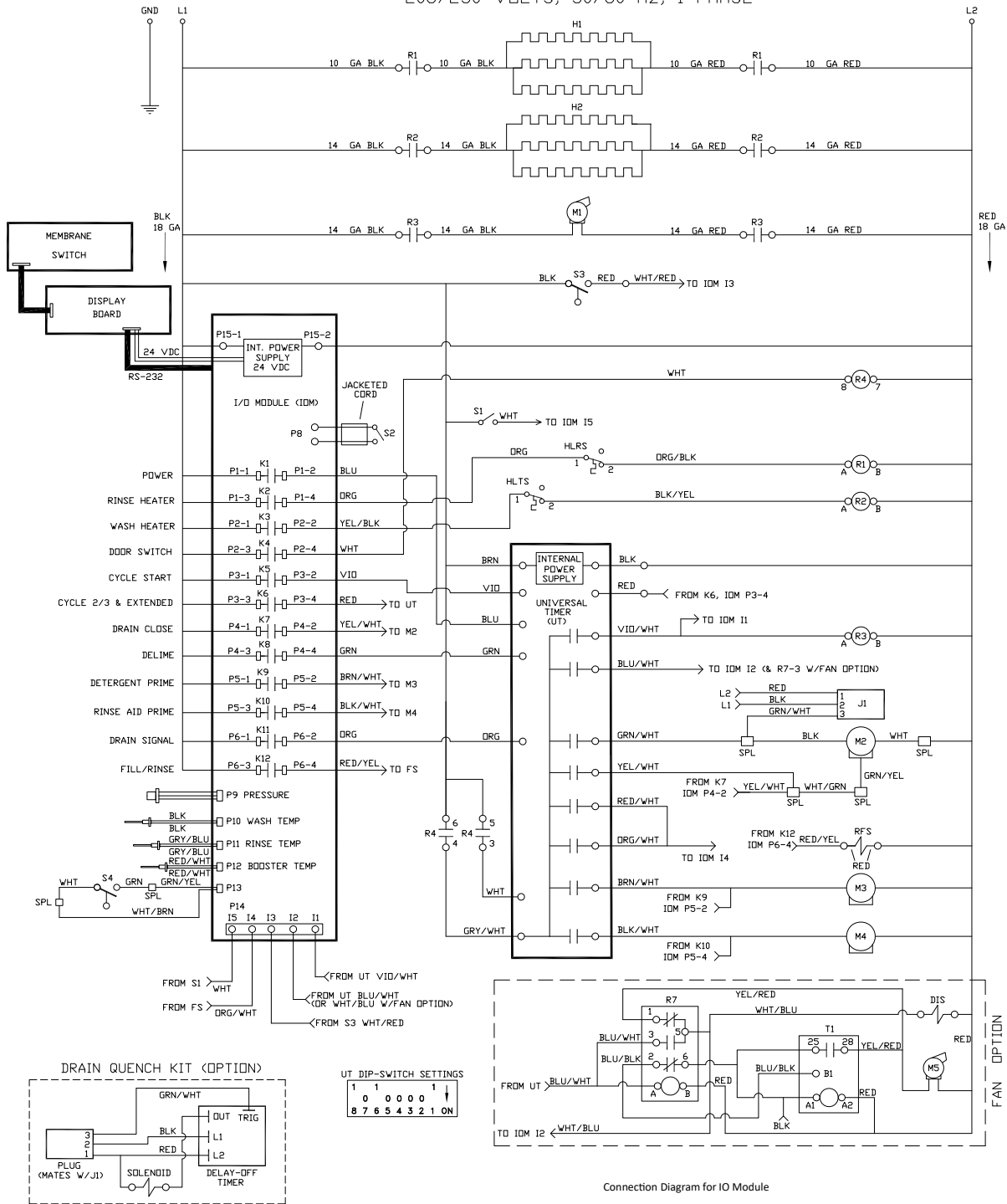


DISHSTAR SCHEMATIC HT-E/HT-E-SEER

208/230 VOLTS, 50/60 Hz, 1-PHASE



LEGEND

- L1 L2 L3 POWER DISTRIBUTION BLOCK
- GND EARTH GROUND
- H1 HEATER, RINSE
- H2 HEATER, WASH
- DIS DOOR INTERLOCK SOLENOID (OPTIONAL)
- M1 MOTOR, WASH
- M2 MOTOR, DRAIN VALVE
- M3 MOTOR, DETERGENT
- M4 PUMP, RINSE AID
- M5 MOTOR, FAN (OPTIONAL)
- R1 CONTACTOR, RINSE HEATER
- R2 CONTACTOR, WASH HEATER
- R3 CONTACTOR, WASH MOTOR
- R4 RELAY, CONTROL
- R5 RELAY, FILL LATCH
- R6 RELAY, DRAIN CONTROL
- R7 FAN/INTERLOCK (OPTIONAL)
- S1 SWITCH, DOOR
- S2 SWITCH, CYCLE START
- S3 FLOAT, HEATER CONTROL
- S4 FLOAT, UPPER
- T1 FAN/INTERLOCK TIMER (OPTIONAL)
- HLTS HIGH LIMIT, WASH HEATER
- HLRS HIGH LIMIT, RINSE HEATER
- RFS SOLENOID, RINSE/FILL
- J1 CONNECTOR, DRAIN QUENCH (OPTION)
- SPL SPLICE

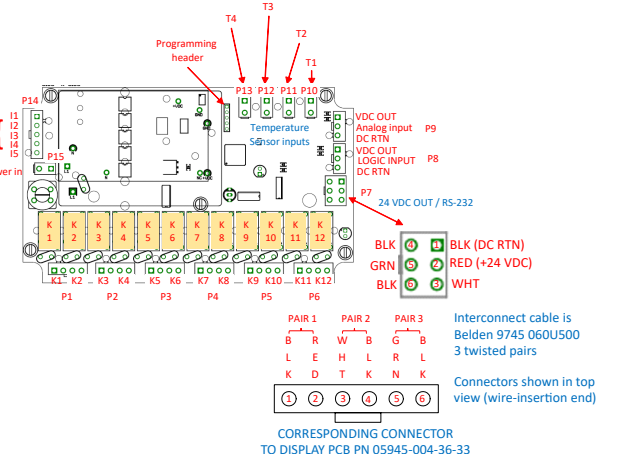
Input Assignments

- I1 Wash
- I2 Cycle
- I3 Float
- I4 Rinse
- I5 Door/Chemicals



Relay Assignments

- K1 Power
- K2 Booster heater
- K3 Wash heater
- K4 Varies by model
- K5 Varies by model
- K6 Varies by model
- K7 Varies by model
- K8 Varies by model
- K9 Varies by model
- K10 Varies by model
- K11 Varies by model
- K12 Varies by model



Connection Diagram for IO Module

CORRESPONDING CONNECTOR
TO DISPLAY PCB PN 05945-004-36-33