

DynaStar[®] with Ventless and Energy Recovery

Project _____
 Item _____
 Quantity _____
 CSI Section 11400
 Approval _____
 Date _____

Models

DynaStar with Ventless and Energy Recovery (VER)



Standard Features

- Ventless: Does not require a hood
- Unique, two-pass Energy Recovery System
- Door interlock keeps door locked during cycle
- Built-in booster heater with Sani-Sure™ final rinse system ensures proper rinse temperature
- Pumped rinse for consistent rinse pressure
- Adjustable rinse system
 - Econo uses 0.66 gal per rack
 - Turbo uses 0.89 gal per rack
- Automatic tank fill
- Door-actuated start
- Three (3) selectable timed cycles
- Digital LED display
- Onboard digital diagnostics
- Delime cycle
- 17-1/2" (445 mm) vertical chamber clearance
- Triple Wash Arm for consistent reliable warewashing performance
- Specially designed stainless steel nozzles provide superior cleaning action
- Interchangeable upper and lower wash/rinse arms
- 1 hp stainless steel wash pump motor
- Interchangeable scrap baskets
- Low watt density electric wash tank heater
- Hi-limit thermostat and low water protection
- Detergent/rinse additive signal connection fuse box
- Front and side dress panels
- Adjustable bullet feet

Mandatory Specs

Specify voltage _____

Options

- 460V Electrical
- Single Phase
- Drain Water Tempering Kit
- 1/2" Pressure Regulator
- Scaltrol
- Water Hammer Arrestor
- Flanged Feet
- Security Package

Accessories

- 36-Compartment Rack
 - 4-1/8" tall (105 mm)
 - 5-5/8" tall (143 mm)
 - 7" tall (178 mm)
- Combination Rack
- Peg Rack

Specifications

- Uses 0.66 gallons (2.5 liters) of water per rack
- Total automatic (normal) cycle - 88 seconds
- 40 (38)* racks per hour (normal cycle)
- Built-in 70 °F (38.9 °C) rise booster heater
- 1 hp stainless steel wash pump motor
- Single point connection for all utilities
- Cold water connection only
- Adjustable rinse - Econo or Turbo
- Field convertible from straight through to corner and vice versa (kit required)
- Field convertible from 3-phase to single-phase and vice versa (kit required)
- Durable stainless steel construction
- Uses standard 20" X 20" (508 mm X 508 mm) racks
- 1-year parts and labor warranty

*Racks per hour calculated with NSF suggested load time of five (5) seconds for door-type (straight thru)



Intertek



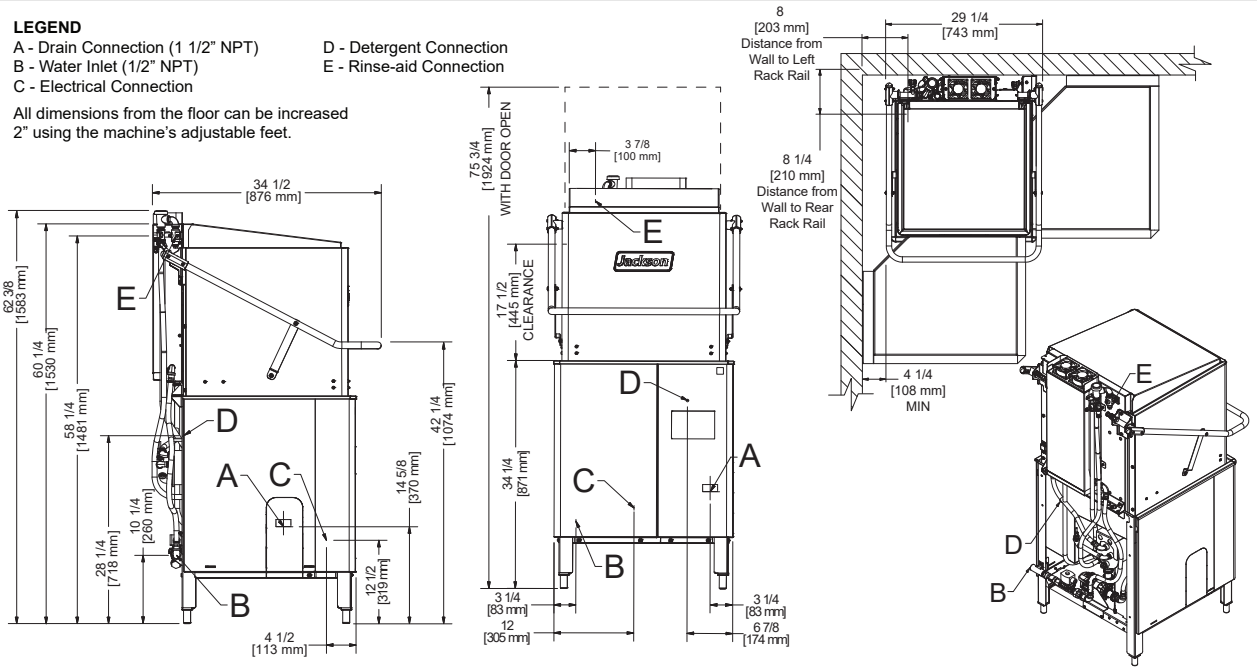
Intertek



LEGEND

- A - Drain Connection (1 1/2" NPT)
- B - Water Inlet (1/2" NPT)
- C - Electrical Connection
- D - Detergent Connection
- E - Rinse-aid Connection

All dimensions from the floor can be increased 2" using the machine's adjustable feet.



MODEL NO.	MACHINE DIMENSIONS				DRAIN HEIGHT	SHIPPING INFORMATION					
	HEIGHT	WIDTH	WIDTH BETWEEN TABLES	DEPTH		WEIGHT	CLASS	CUBE	HEIGHT	WIDTH	DEPTH
DynaStar VER	62-3/8" (1583 mm)	29-1/4" (743 mm)	25-5/16" (643 mm)	34-1/2" (876 mm)	14-5/8" (370 mm)	391 lbs (178 kg)	150	55.95 cu. ft.	68-1/2" (1740 mm)	33" (838 mm)	42" (1067 mm)

DIMENSION REQUIREMENTS	
Wall Clearance - Rear (minimum)	0" (0 mm)
Wall Clearance - Corner Installation Side (minimum)	4-1/4" (108 mm)
Standard Table Height	34-1/4" (871 mm)
Inside Clearance	17-1/2" (445 mm)
Machine Height with Door Open	75-3/4" (1924 mm)

OPERATING CAPACITY			
Racks per Hour	Normal	Heavy	Extra Heavy
	40 (38)*	26 (25)*	13 (13)*

OPERATING CYCLE (seconds)					
	Wash	Rinse	Dwell	Condensate Removal	Total Cycle
Normal	40	11	7	30	88
Heavy	90	11	7	30	138
Extra Heavy	220	11	7	30	268

ELECTRICAL REQUIREMENTS				
	Power Supply	Total Load	Minimum Circuit Ampacity	Maximum Overcurrent Protection
	208/60/3	42.2 A	43.4 A	45 A
	230/60/3	46.0 A	47.3 A	50 A
	460/60/3	19.8 A	20.2 A	25 A
	208/60/1	68.8 A	70.1 A	75 A
	230/60/1	75.5 A	76.7 A	80 A

HOW TO SPECIFY: DynaStar with Ventless & Energy Recovery

WATER REQUIREMENTS	
Inlet Temperature	40 - 90 °F (4.4 - 32.2 °C)
Gallons per Hour	26.40 gal (99.93 L)
Gallons per Hour**	25.08 gal (94.94 L)
Gallons per Rack (Econo / Turbo Rinse)	0.66 gal (2.5 L) / 0.89 gal (3.4 L)
Waterline Size IPS (minimum)	1/2"
Drainline Size IPS (minimum)	1-1/2"
Required Flow Pressure (PSI)	15-65
Wash Tank Capacity	8 gal (30 L)
Booster Tank Capacity	1.66 gal (6.29 L)

OPERATING TEMPERATURES	
Wash (minimum)	150 °F (66 °C)
Rinse (minimum)	180 °F (82 °C)

MOTORS & HEATERS		
Wash Pump Motor Horsepower 208V and 230V		1
Wash Pump Motor Horsepower 460V		3/4
	Volts	KW
Electric Wash Tank Heater	208V	4.1
	230V	5.0
	460V	5.0
Electric Rinse Tank Heater - 70 °F (38.9 °C) Rise	208V	9.0
	230V	11.0
	460V	9.2

*Racks per hour calculated with NSF suggested load time of five (5) seconds for door-type (straight thru)
 **Gallons per hour calculated with NSF suggested load time of five (5) seconds for door-type (straight thru)

Jackson WWS, Inc.
 Shipping Address: 6209 North U.S. Highway 25E, Gray, KY 40734
 Mailing Address: P.O.Box 1060, Barbourville, KY 40906
 Telephone: 888-800-5672 • Fax: 606-523-1799
 Email: info@jacksonwws.com
 07610-004-92-09 [09-17-2020]

www.jacksonwws.com