



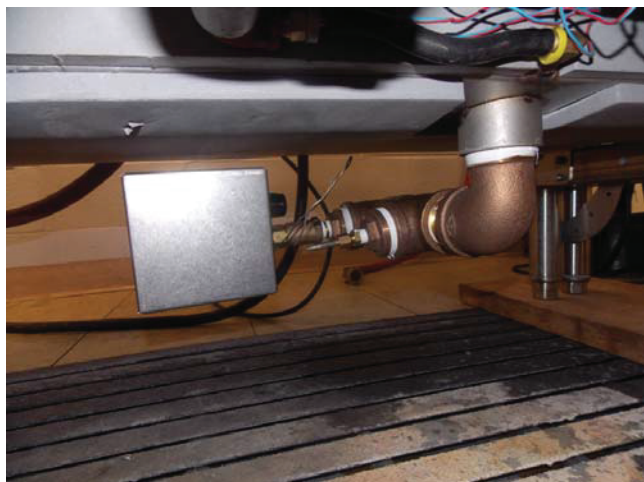
- This kit should be installed only by qualified service personnel to reduce the risk of electric shock, serious injury, or fire. A plumbing permit and the services of a licensed plumber and electrician might be required in some areas.
- Turn off the power supply and place the dishwasher disconnect (if applicable) in the off position. Lockout/tagout to prevent the power supply from being turned back on accidentally.
- Failure to install this kit within the guidelines might adversely affect safety, performance, component life, and warranty coverage.
- Do NOT pull power for the Drain Water Tempering Assembly from the machine! 120V facility power only!

Tools Required

- Pipe Wrench
- Adjustable Wrench
- 5/16" Nut Driver
- 3/8" Nut Driver or Wrench
- Phillips Screwdriver
- Pipe Thread Sealant Tape or Pipe Dope
- Needle-nose Pliers

Instructions

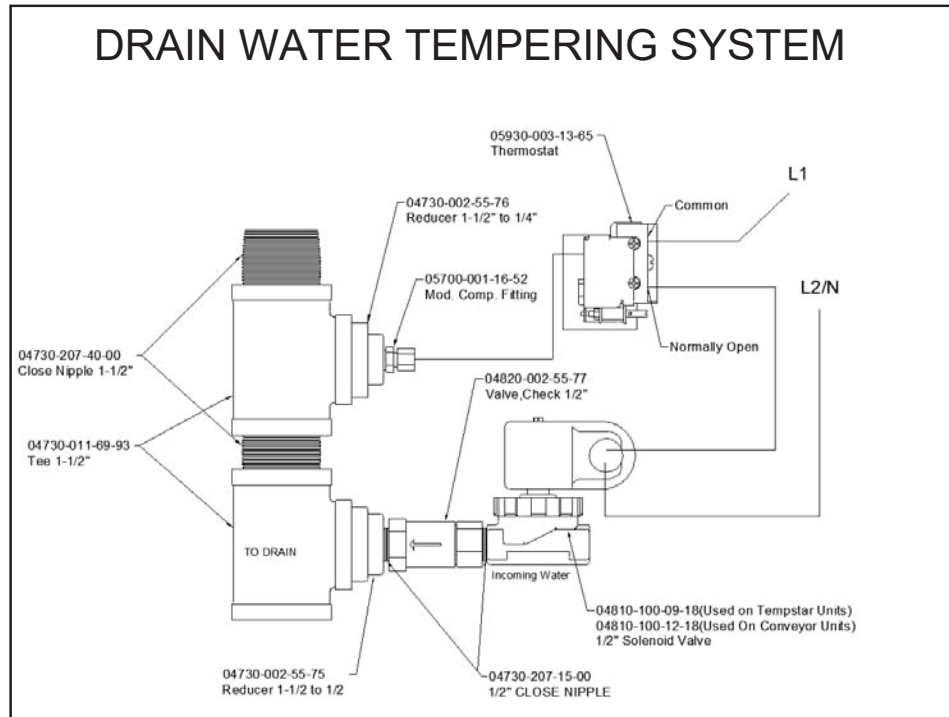
1. Connect Drain Water Tempering Assembly to the machine drain via 1.5" NPT street elbow.
2. Orient assembly as shown below:



3. Connect user-supplied 115V cord (from facility power) into solenoid box as shown below:



Power cannot
be taken from
the machine!



4. Connect cold water to inlet side of solenoid valve.
5. Secure all electrical (ensure connection is to 120V facility power) and plumbing connections.
6. Restore water and power to the machine and verify drain water tempering performance.