

## WASH TANK HEATER REPLACEMENT



**CAUTION!** *Many of the instructions and steps within this document require the use of tools. Only authorized personnel should ever perform any maintenance procedure on the machine!*

*These machines come equipped with heaters to ensure proper warewashing results. Occasionally, these components might need replacing. The instructions provided here are for maintenance personnel only. Unauthorized persons should not attempt any of the steps contained in these instructions.*

### PREPARATION

- Power must be secured to the machine at the service breaker. Tag or lock-out the service breaker to prevent accidental or unauthorized energizing of the machine.



- Ensure that incoming water to the machine is secured either by use of a shut-off valve or disconnecting the incoming water line.
- The machine must be drained completely with the drain stopper removed.

### TOOLS REQUIRED

- 3/8" Nutdriver
- Ratchet
- 1/2" Socket/Wrench
- 3/8" Socket/Wrench
- Torque Wrench
- Amp Meter
- Phillips Screwdriver

### IMPORTANT NOTES

- Read these instructions thoroughly before attempting this maintenance task. Become familiar with the parts and what actions need to be taken. This will save time in the long run!

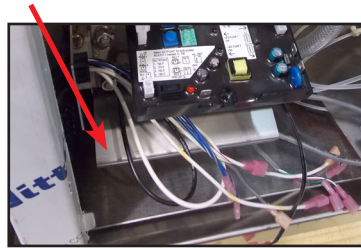
### STEPS

1. Remove the front door.
2. Remove the heater box cover with the 3/8" nutdriver. Set the cover and hardware to the side.

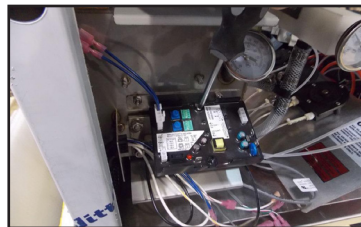


## WASH TANK HEATER REPLACEMENT

1. Remove the lower strainer.



2. Remove the ELAN thermostat using a phillips screwdriver. Either unplug the wires or cut the wire-tie and let the thermostat hang down out of the way.



3. Remove the thermostat bracket with the 3/8" nutdriver.



4. Remove the upper (wash) strainer. Set both strainers to the side where they will not be damaged or present a trip hazard.



5. Using the 3/8" nutdriver, remove the nuts securing the heater wires to the heater. Then carefully pull the wires out of the way.



## WASH TANK HEATER REPLACEMENT

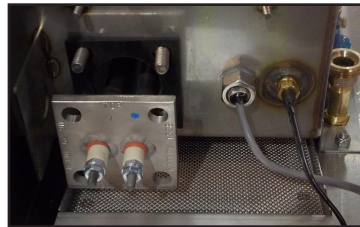
1. Using a 1/2" socket or wrench, remove the heater mounting nuts.



2. Removing the heater might require that you reach into the wash tank, grasp it, and give it a push out of the wash tank.



3. Once the heater is pushed away from the tank wall, pull it out with your hands.



4. Remove the old heater gasket and throw away.
5. Apply the new heater gasket.

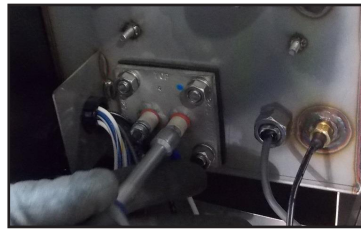


6. Take the new heater and slide it through the hole in the wash tank and line it up so the wash tank studs fit in the holes on the heater flange (Step 10 in reverse).
7. Place the mounting nuts and lockwashers on the studs and secure them with a 1/2" socket or wrench (Step 8 in reverse).

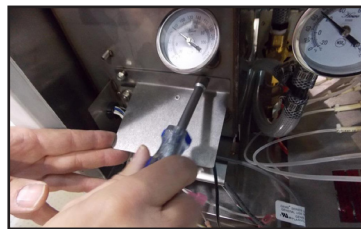


## WASH TANK HEATER REPLACEMENT

1. Place the heater wires on the heater and tighten the nuts down using the 3/8" nutdriver (Step 7 in reverse).



2. Using the torque wrench or a torque nutdriver (if available) torque the nuts holding the wires, jumpers, and bus bars to 16 in-lbs.
3. Replace the thermostat bracket using the 3/8" nutdriver (Step 5 in reverse).



4. Replace the ELAN thermostat using a phillips screwdriver (Step 4 in reverse). If you unplugged the wires, reconnect them per the machine schematic on the back of the door. If not, move to the next step.



5. Replace the upper and lower strainers.
6. Ensuring that all non-essential personnel are clear of the area, place the drain stopper back in the wash tank and restore power and water to the machine. Turn the machine on and allow it to fill normally.
7. Verify that there are no leaks around the heater. If there are, attempt to tighten it down (with power secured to the machine at the service breaker to prevent injury) as the tank will change shape slightly as it heats up.
8. Use the amp meter to take readings off of the power lines to the heater, verifying they match the machine data plate. Be careful not to yank out or damage any of the wires as you move the cover.
9. Wait until the heater contactor kicks out (meaning that the tub has reached the appropriate temperature) and allow the machine to operate approximately ten minutes to verify that there are no leaks and that the

## WASH TANK HEATER REPLACEMENT

1. Replace the heater cover (Step 2 in reverse).



2. Replace the front door.

### AFTER MAINTENANCE ACTIONS

- Service personnel might want to drain the machine and allow it to cool down. Secure power to the machine at the service breaker and then verify the torque of all fasteners covered in this instruction.



**NOTICE** *Work performed on machines by unauthorized or unqualified personnel may void the warranty. Before beginning this or any other maintenance on a machine under warranty, you should contact a qualified service agency.*