

**DYNASTAR HH-E FALSE PANEL - 06401-004-89-11**



**WARNING:** This part *should* be installed only by qualified service personnel to reduce the risk of electric shock, serious injury, or fire. A plumbing permit and the services of a licensed plumber and electrician might be required in some areas.

Turn off the power supply and place the dishwasher disconnect (if applicable) in the off position. Lockout/tagout to prevent the power supply from being turned back on inadvertently. Shut-off incoming water.

**CAUTION:** Failure to install this part within the guidelines might adversely affect safety, performance, component life, and warranty coverage.

**TOOLS REQUIRED**

- 7/16 Nutdriver/Socket
- Food-grade Sealant

**PARTS INCLUDED**

QTY	DESCRIPTION	PART NUMBER
1	False Panel, DynaStar HH-E	05700-004-89-10
2	Nut, 1/4-20	05310-004-23-96

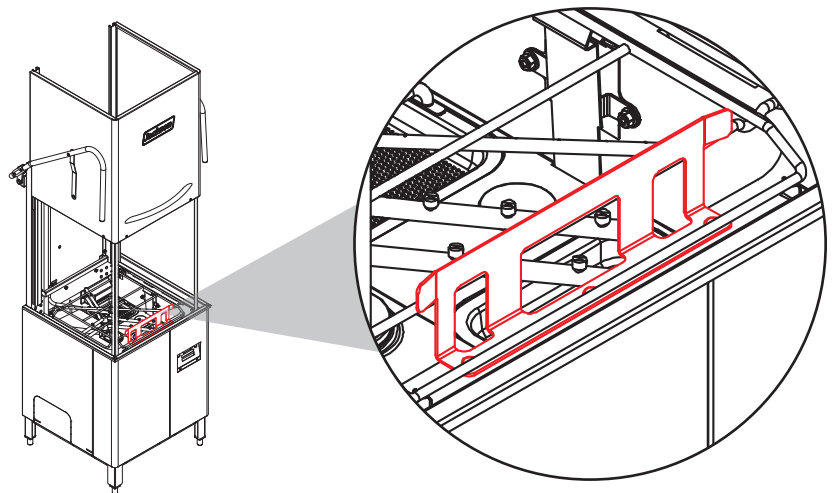
**FALSE PANEL INSTALLATION**

1. Open door and remove front rack rail from track assembly using 7/16 nutdriver/socket. If installing false panel, proceed to Step 3. If not installing false panel, proceed to Step 2.

*Machine comes configured for straight-through operation, so track assembly must be converted for corner operation before installing.*

*7/16 nutdriver/socket used in this step.*

*Keep hardware!*



### FALSE PANEL INSTALLATION

*For corners with wall surfaces that are susceptible to water damage, false panel option reduces amount of water hitting wall whenever door is raised.*

*7/16 nutdriver/socket used in this step.*



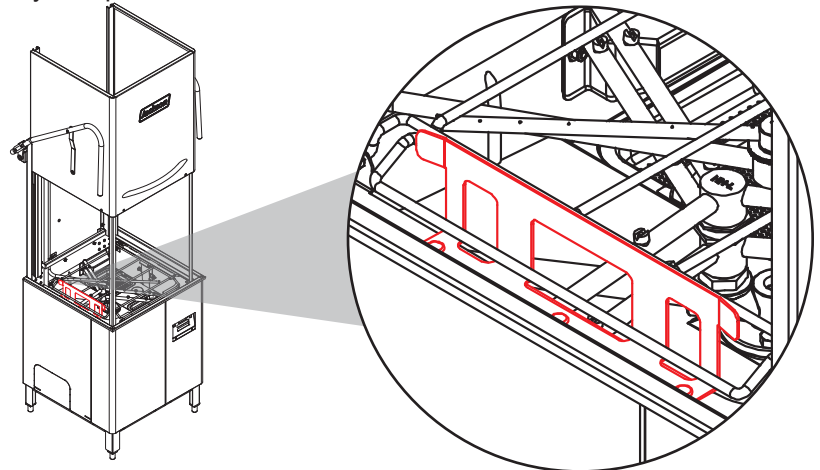
**False panel MUST be installed before machine is placed in corner.**

**Keep hardware!**

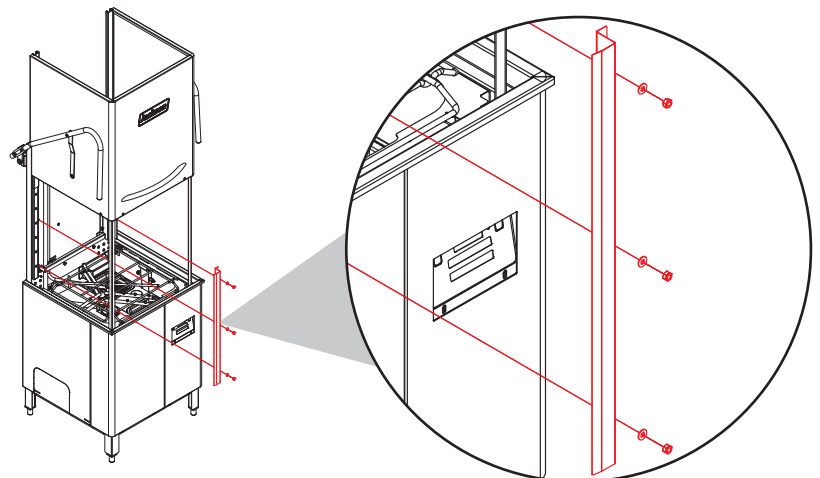
*7/16 nutdriver/socket used in this step.*

**Keep hardware!**

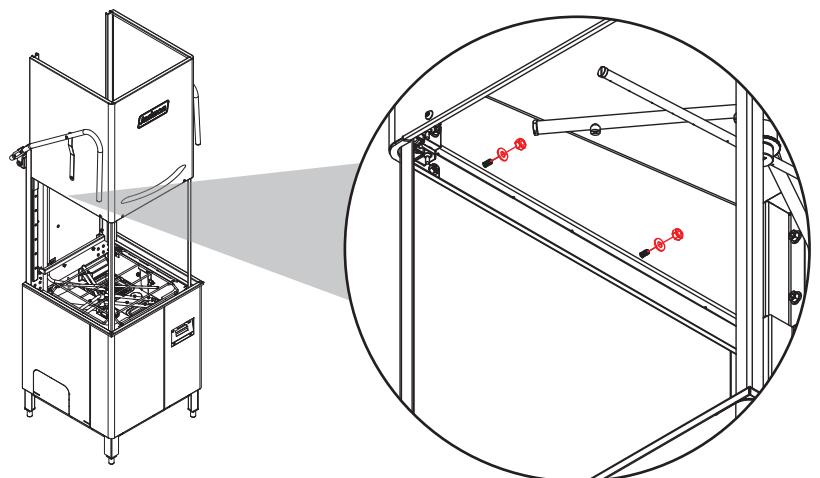
2. If not using false panel, install rack rail and hardware from Step 1 on left-side of track assembly and proceed to Corner Installation section.



3. If installing false panel, use 7/16 nutdriver/socket to remove three nuts securing rear door track cover at back-left of machine. Discard rear door track cover.



4. Use 7/16 nutdriver/socket to remove two nuts placed for false panel option.

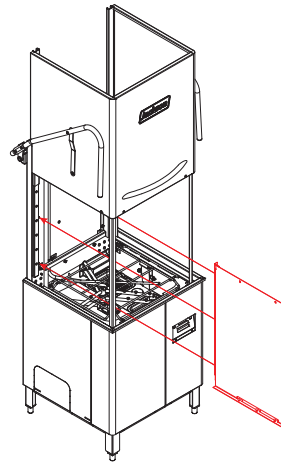


### FALSE PANEL INSTALLATION

- Place back of false panel over studs from Step 3 and top of false panel over studs from Step 4. Replace hardware from both steps with 7/16 nutdriver/socket.

7/16 nutdriver/socket used in this step.

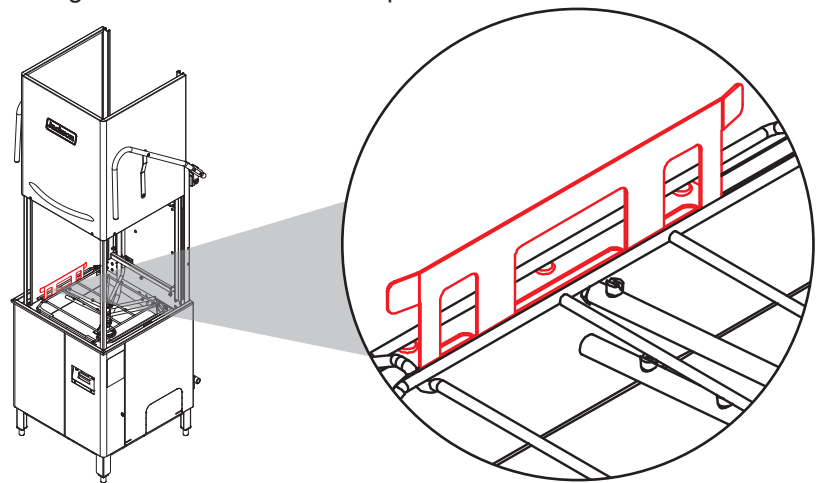
Hardware from Steps 3 & 4 used in this step.



- Install front rack rail removed in Step 1 on left side of machine, ensuring studs on rack rail go through holes in bottom of false panel.

7/16 nutdriver/socket used in this step.

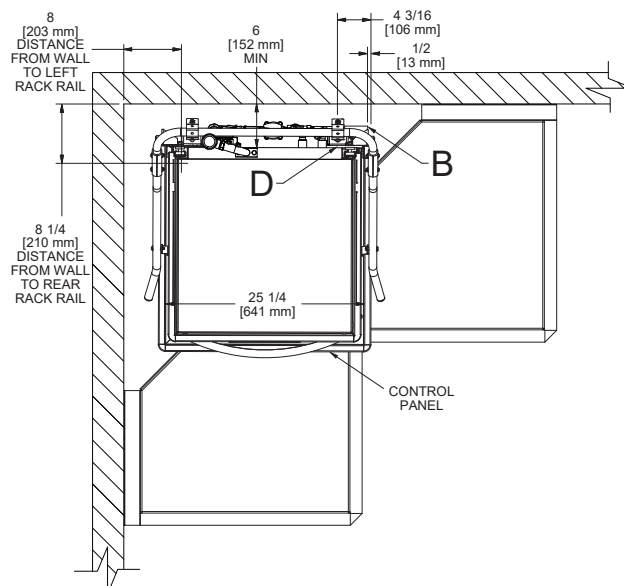
Item #1 from kit used in this step.



### CORNER INSTALLATION

- Locate machine so control panel faces into room and can be accessed by operator.

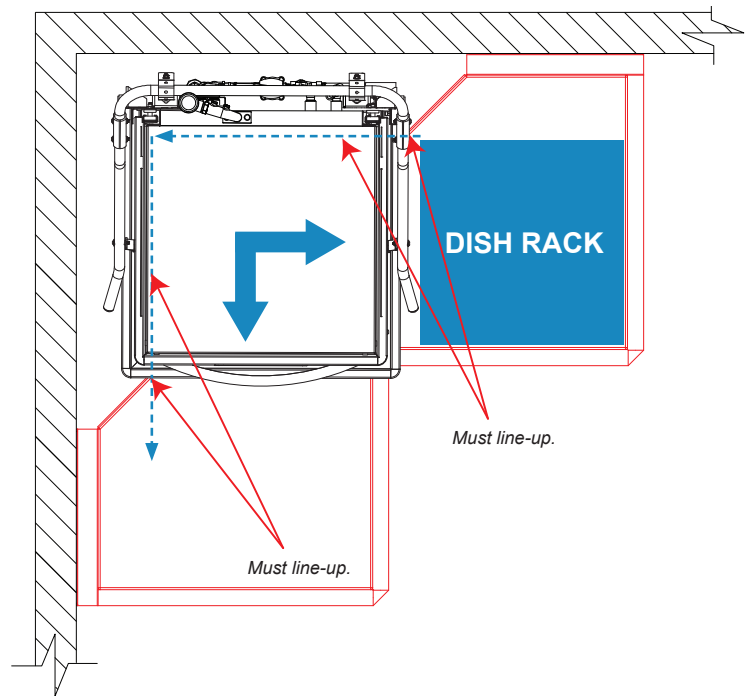
Utilities that are hard to reach should be installed before tables are installed.



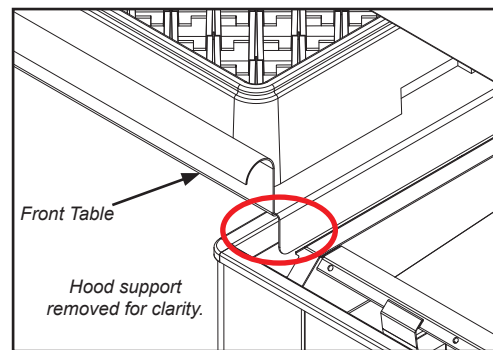
## CORNER INSTALLATION

*Dish tables are stationary, so machine must be moved until rack rails line-up with proper locations on dish tables. As a result, distances from wall might vary.*

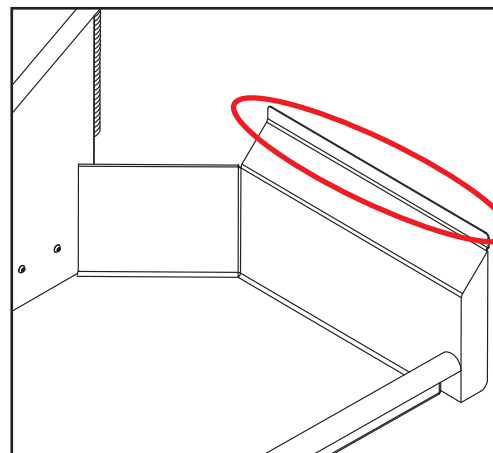
- For proper loading and unloading of dish racks, locate machine so dish tables and machine rack rails align.



- Install dish tables so edge of each table fits over inner wall of machine tank.



- Seal each dish table joint with food-grade sealant to prevent leaks.



*Food-grade sealant used in this step.*

- Connect remaining utilities according to manufacturer's instructions and all applicable codes and regulations.